

*Wishing you Health, Happiness, & Prosperity  
throughout the Holidays and the New Year!*



**The MLS®/CLAW Officers, Directors & Staff**

Annie Ives, CEO  
Steve Miller, President  
Patricia Douglas, Vice-President (Southwest AOR)  
Mike Deasy, Treasurer (BHGLAAR)  
Rosanne Howard, Director (BHGLAAR)  
Robert Leighton, Director (BHGLAAR)  
Robin Greenberg, Director (BHGLAAR)  
Steve Drust, Director (BHGLAAR)  
Ronna Brand, Director (BHGLAAR)  
Dan Ross, Director (Malibu AOR)  
Bobby Lehmkuhl, Director (Malibu AOR)  
Ed White, Director (Southwest AOR)

Gigi Merina, Director of Operations  
Daniel Ortega, Director of Product Development & IT  
Lisa Powell, Director of Product Management  
Jorge Diaz, Help Desk Manager  
Diana Contreras, Accounting Manager  
Mark Sternberg, Production Manager  
Pablo Palma, IT Manager  
Carlos Pavón, Project Manager



## SLIMM

- Submit for Approval
- Quick Edit
- Sale Type added to database

## Search

- Search by Price per Square Foot
- Search Multiple MLS numbers
- Search by Sale Type
- Custom Search
- Inventory Search
- CMA Shortcut from THEMLSPRO® Listing Search



## The MLS eMobile™

- City is Searchable
- Area Numbers Available
- Option to Display Public and/or Private Remarks on Detail Screen
- Search Multiple ZIP codes
- Access Saved Searches from THEMLSPRO®
- The MLS eMobile™ Save Searches
- The MLS eMobile™ Hotsheet

## Open House Module

- Multiple Open Houses can be Added at Once
- Twilight Open Houses Available

## Cross Browser Compatibility



*Customer Service  
is Our*

**#1 Priority**

## TheMLS.com™ Guest Search

- Completely Re-designed!
- Now with Walk Score®
- Search Multiple Areas & ZIP Codes
- Customer can save Favorites
- Customer Registration
- Auto Display of Similar Active and Sold Properties on Detail Page



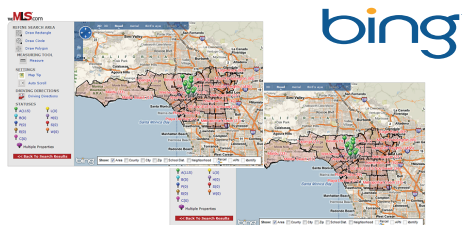
## CARETS™

- Client Detail Reports
- Reformatted CARETS™ Report
- eProperty - CARETS™ Commercial
- Added VCRDS & Desert Area MLS Residential Data



## Maps

- Satellite Images
- All New Bing™ Maps
- Boundary Overlays for Bing™ Maps



## New Modules

- New Photo Upload Utility Module
- Prospect Auto Notifications Email Module
- Home Search Central – Interact with Clients; Favorites, Maybes, Notes



**NEW RELEASE!**

## New Products & Updates From 3rd Party Vendors:

- The MLS REALTX™ Mapping Tools and 50 New Counties
- The MLS REALTX™ Integrated with The MLS®/CLAW listings
- The MLS REALTX™ linked back to THE MLS®/CLAW database
- The MLS FaxManager™
- The MLS DocManager™
- The MLS iFaxMail™
- OnBoard Informatics Community Data Report
- Updated SecureAuth® 2-Factor Security

## Support

- Online Chat





## COMING IN 2011

- Reverse Prospecting
- New Financial Functions
- New Statistics Module
- Listing Tracker Statistics
- Messaging system
- Additional Advanced Mapping Features –  
Search Multiple Map Areas with Exclusions!
- More Community Reports
- And Much, Much more!

## We Are Listening!



### Get Trained in 2011!

Take Full Advantage of Your Member Benefits!

## Now Available Try our new Mobile Training Lab!

Hands On Comes to You!

From 5-10 agents! Just Call to Schedule

**(424)249-6277**

OR

On Demand Training - View our recorded  
Webinars 24/7!





**NEW RELEASE!**

## Improve Communication with Your Prospects!

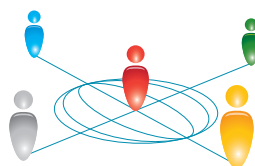
The MLS Home Search Central™ is a new type of auto-notification that allows you to send an interactive link to your prospects. Here are just some of the key benefits of this exciting new tool:

- Monitor Prospects Activity
- Exchange Notes with your Prospect
- View your Prospect's Favorites, Maybes & Rejects
- Suggest Properties for your Prospect
- Provide your Prospect with New Report Options



Reports

Properties



## Latest Enhancements Webinar Schedule!

**Thu, January 6, 2010**  
6:00PM - 7:00PM

**Thu, January 13, 2010**  
10:00AM - 11:00AM

**Thu, January 20, 2010**  
6:00PM - 7:00PM

**Thu, January 27, 2010**  
10:00AM - 11:00AM

**Fri, January 7, 2010**  
2:00PM - 3:00PM

**Fri, January 14, 2010**  
2:00PM - 3:00PM

**Fri, January 21, 2010**  
2:00PM - 3:00PM

**Fri, January 28, 2010**  
2:00PM - 3:00PM

**To Register Call Now!**  
Space is limited!



**310-358-1833**



## Latest Enhancements Hands-On Training

**Wed, January 5, 2010**  
2:00PM - 3:00PM

**Wed, January 12, 2010**  
2:00PM - 3:00PM

**Wed, January 19, 2010**  
2:00PM - 3:00PM

**Wed, January 26, 2010**  
2:00PM - 3:00PM



**To Register Call Now!**  
Space is limited!

**310-358-1833**

All Hands-On training done  
at The MLS®/CLAW  
822 S. Robertson Blvd # 104  
Los Angeles, CA 90035

## Try The MLS®/CLAW New Mobile Training Lab!

Includes 10 Laptops  
and Wifi!

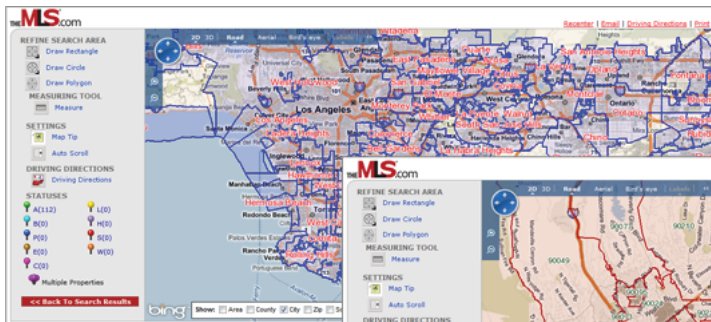
Call Today  
to book a  
Hands-On  
Training  
310-358-1833



This new feature will allow you to overlay your search results with pre-drawn boundary maps for any of the following:



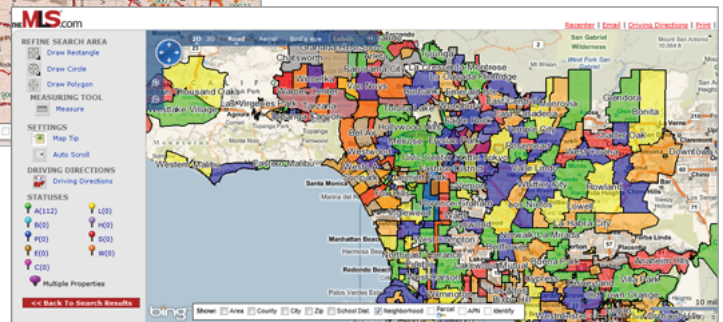
- ✓ City
- ✓ ZIP Codes
- ✓ Neighborhood
- ✓ School District
- ✓ Parcel
- ✓ County



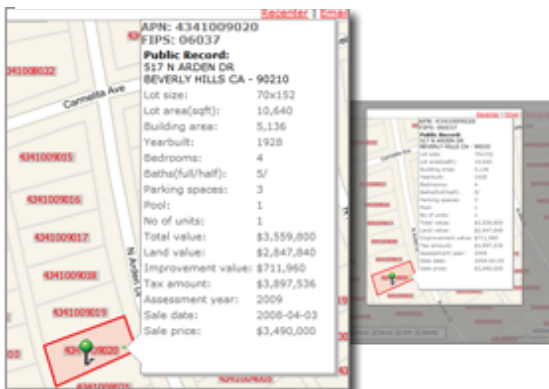
City



Zip Codes



Neighborhood



APN, Parcel, with  
Public Records  
Data





The MLS®/CLAW Staff



Annie Ives, CEO

**Thank you for your Loyalty**  
**Our gift to you...**



**Take \$30 off ANY ad in either**



**The MLS Homes & Open Houses™  
Weekend Edition**

**or**

**The MLS Open House Guide™  
Broker Edition!**

*Promotion Code: FPBW2020*

*\*Only One (1) Coupon Good Per Member\*  
Redeemable through Dec. 31, 2011*

**Any**

