

THERE ARE PIECES WHICH FURNISH A HOME  
AND THOSE WHICH DEFINE IT...



310.556.0418 [INQUIRIES@DRESSEDDESIGN.COM](mailto:INQUIRIES@DRESSEDDESIGN.COM) [WWW.DRESSEDDESIGN.COM](http://WWW.DRESSEDDESIGN.COM)

370 NORTH JUNE STREET JON GRAUMAN THE AGENCY 424.238.2484

CALL OUR OFFICE  
FOR A COMPLIMENTARY  
DESIGN CONSULTATION  
BETH ANN SHEPHERD, PRESIDENT

**DRESSED**  
INC. 





STAGING AND INTERIORS • RESIDENTIAL • COMMERCIAL • LUXURY FURNITURE LEASES  
WEST AND EAST COAST • 310 204 5353 • [www.meridithbaer.com](http://www.meridithbaer.com)



**MERIDITH BAER HOME**





**ERIN HICKEY**  
DIVISIONAL SALES MANAGER  
310.849.6845 | NMLS# 1000261



**STEPHANIE KATES**  
818.231.8960 | NMLS# 481277



**DANNIEL GAT**  
424.236.7844 | NMLS# 261049



**WILFREDO PERDOMO**  
310.694.2089 | NMLS# 1032590



**KEITH MURPHY**  
714.309.1140 | NMLS# 330827



**ADAM VILLANEDA**  
951.251.5342 | NMLS# 269833



**ELI WEINBERGER**  
310.927.2467 | NMLS# 486143



**CHRISTIAN CRANDALL**  
323.707.3532 | NMLS# 488146



**CAROLINE MCPHERSON**  
310.913.3198 | NMLS# 260493



**BUDDY EPSTEIN**  
310.968.4644 | NMLS# 250664



**STEVE WETZEL**  
714.594.9549 | NMLS# 829535

# PERL

YOUR LENDER FOR LIFE



**TODD SEABOLD**  
DIVISIONAL VICE PRESIDENT

*Great Rates. Custom Solutions. Seamless Process.  
That's the PERL Difference.*

We understand that buying a home and refinancing a mortgage are big decisions and can present challenges and uncertainties. At PERL, we're committed to overcoming these challenges for you while giving you access to competitive rates and the peace of mind of working with a local, dedicated mortgage expert from start to finish. The entire process from underwriting to funding takes place all within our South Bay office ensuring you a smooth transaction from the moment you contact us all the way through closing.



PERL Mortgage, Inc. is an Illinois residential mortgage licensee (MB0004358) and equal housing lender. Licensed by the California Department of Business Oversight under the California Residential Mortgage Lending Act. NMLS #19186



# DEALBREAKERS.

**Mark Cohen, Broker**  
BRE#: 1016103 - NMLS#: 37230  
markcohen@cohenfinancialgroup.com

**Seth Cohen, Broker**  
BRE#: 01935101 - NMLS#: 982573  
seth@cohenfinancialgroup.com

We are the industry's top mortgage professionals getting more complex deals done than anyone else.

### Custom-Fit Solutions

A unique and personalized approach to every situation including **self-employed**, **high-net-worth**, and **foreign borrowers**.

### Relationship-Based Client Experience

The highest reputation in the industry with excellent rapport with Sellers' Agents.

### Quick Closures

Direct channel to banks' executives for quicker approvals and unmatched professional expertise to get deals done.

### Transparency & Communication Throughout The Entire Process

Consistent execution on all loans with no surprises.

## \$10 Billion

LOANS FUNDED

## 18,000

LOANS CLOSED

## 30+

YEARS EXPERIENCE



**Sasan Abrams**  
sabrams@cohenfinancialgroup.com  
BRE 01959640 - NMLS 1194434  
Originator Specializing in Multi-Family & New Development

 **COHEN**  
financial group  
cohenfinancialgroup.com



**KW BEVERLY HILLS**  
KELLER WILLIAMS REALTY



**P 310.777.5401 F 310.777.5410**

\*By dollar volume in 2014, *Scotsman Guide*, April 2015.

©2016 Cohen Financial Group, a division of CS Financial, Inc. All rights reserved. Not all applicants will qualify. CS Financial, Inc. is a real estate broker licensed by the CA Bureau of Real Estate, lic# 01257559, NMLS# 31132. Equal housing lender.

# Loans are a Puzzle



You need a local mortgage expert to help you fit the right pieces together.

- Works directly with you as well as your client
- Stellar support staff, always keeping buyers informed and engaged in every transaction
- No deal is too easy or too complicated
- A true partner you can count on for all your escrows

Let us put all the pieces together on your next sale.



HomeBridge Financial Services proudly presents  
Your local mortgage experts in the Los Angeles area

Follow us on social media:



**Mike Hartunian**

Branch Manager  
Mortgage Loan Originator  
NMLS# 247330

Direct: (818) 728-3702  
mike.hartunian@homebridge.com  
www.mikehartunian.com



**Joe Parisi**

Mortgage Loan Originator  
NMLS# 255572

Direct: (818) 728-3703  
joe.parisi@homebridge.com  
www.josephparisi.com



**Experts with the most complex Tax Returns**

# MORE

**MORTGAGE OPTIONS.**

**WAYS TO QUALIFY.**

**CLOSED LOANS.**

**Interest only ARM's  
High LTV's**

**Qualify with only  
one year tax returns**

**Super Jumbo  
Fixed Rate  
Up to \$10 M**

**Asset depletion  
qualifying  
for high-net worth  
Clients**

**In-house Private  
Money  
Can fund in 5 days!**

**We Fund:**

- **Commercial**
- **Apartment**
- **Construction**

**Transactions of all sizes**



**Gloria Shulman**

A Legend in the Industry for More Than 30 Years

9100 Wilshire Blvd  
Suite 275 E  
Beverly Hills, CA 90212

T. 310-275-3202  
F. 310-247-1232  
Gloria@centek.com

NMLS 275995  
BRE 00659928  
www.centek.com

**CENTEK**

**CAPITAL GROUP**

*Mortgage Bankers & Brokers*

\*Not all borrowers will qualify for all programs referenced in this ad. CenTek Capital Group is a broker licensed by the CA Bureau of Real Estate NMLS 275995 BRE 00659928

guaranteed **Rate**<sup>®</sup>

The Home  
Purchase Experts<sup>®</sup>



**Guaranteed Rate closes the deal.  
You get paid. Simple.**

**CLOSE MORE DEALS. PERIOD.**

**James Elliott**

Senior Vice President, Divisional Manager

**(310) 806-4604**


[james.elliott@rate.com](mailto:james.elliott@rate.com)

[Rate.com/CALosAngeles](http://Rate.com/CALosAngeles)

guaranteed **Rate**<sup>®</sup>

The Home  
Purchase Experts<sup>®</sup>

12121 Wilshire Blvd, Ste. 350 • Los Angeles, CA 90025

 **EQUAL HOUSING LENDER** James Elliott NMLS ID:120474, LO ID#: CA - CA-DOC120474 - 413 0699 • NMLS ID #2611 (Nationwide Mortgage Licensing System [www.nmlsconsumeraccess.org](http://www.nmlsconsumeraccess.org)) CA - Licensed by the Department of Business Oversight, Division of Corporations under the California Residential Mortgage Lending Act Lic #4130699.  
Guaranteed Rate is an Equal Opportunity Employer that welcomes and encourages all applicants to apply regardless of age, race, sex, religion, color, national origin, disability, veteran status, sexual orientation, gender identity and/or expression, marital or parental status, ancestry, citizenship status, pregnancy or other reason prohibited by law. • This ad is not a solicitation of business and is not intended for consumers.





# #1 Originator In The Country By Loan Size!

Over \$462 Million of Loans Originated in 2016

## 3/1 ARM Interest-only

# 2.999%

# 3.181% APR

Interest is set for 3 years and then can be adjusted each year thereafter, based on the current index. Payments may increase to pay back both principal and interest. The rates referenced above are available only for 1st Lien Loans.

# 310-859-0488

<h3>Foreign National Loans</h3> <p>From \$500K to \$25 million.</p>	<h3>Self Employed &amp; Real Estate Investor</h3> <p>1031 Exchange OK</p>	<h3>No Tax Return Loans</h3>
---	---	------------------------------

No tax return loans may require other forms of income verification and may have a higher interest rate and higher points or fees, than other loans. Not all applicants will qualify.

NATIONALLY RANKED: **Scotsman | Guide media** **National Mortgage News** AS SEEN IN THE **WALL STREET JOURNAL**

**CHRIS FURIE**  
BRE 01004991 | NMLS 357449  
chris@insigniamortgage.com



**DAMON GERMANIDES**  
BRE 01794261 | NMLS 317894  
damon@insigniamortgage.com

9595 Wilshire Blvd., #205, Beverly Hills, CA 90212 | 310-859-0488 | www.insigniamortgage.com

©2017 Insignia Mortgage, Inc. Sampling of rates as of February 15, 2017. (1) No Tax Return products require other forms of income verification and asset verification in lieu of tax returns. Not all applicants will qualify. Some products we offer may have a higher interest rate, more points or more fees than other products requiring documentation. Minimum FICO, reserve, and other requirements apply. Contact your loan officer for additional program guidelines, restrictions, and eligibility requirements. Rates, points, APRs and programs are subject to change without notice. Loan values (LTV) are based on bank appraisal. Actual closing time will vary based on borrower qualifications and loan terms. Insignia Mortgage, Inc., is a real estate broker licensed by the CA Bureau of Real Estate, BRE #01969620, NMLS #1277691. (2) With an interest-only mortgage payment, you will not pay down the loan's principal balance during the interest-only period. Once the interest-only period ends, your payment will increase to pay back the principal and interest. Rates are subject to increase over the life of the loan. Contact your Insignia Mortgage, Inc. loan officer to determine what your payments might be once the interest-only period ends.



**BH/GLAAR**  
**Young Professionals Network**

**YPN Happy Hour Mixer - March 1<sup>st</sup>**



Please join the BH/GLAAR YPN for our monthly Happy Hour Fundraising Network Mixers. Come and enjoy a drink while networking with like-minded real estate professionals throughout the Los Angeles area. We will have a sponsored door prizes each month.

All monies from door prize ticket sales will benefit the BH/GLAAR Charitable Foundation.

*This year, the BH/GLAAR Charitable Foundation will be joining the City of Los Angeles and the Department of Veterans Affairs to assist with the State of Emergency on Homelessness throughout our region. The Foundation will also support the extraordinary efforts of the Downtown Women's Center and PATH (People Assisting The Homeless), two organizations that have taken a leadership role in addressing Veterans' housing needs. Your support is greatly appreciated.*

Wednesday, March 1, 2017 - 5:00pm - 7:00pm

REALTORS® bring a business card for free admission & special drawing!

**Citizen**

184 N Canon Drive  
 Beverly Hills, CA 90210

**Door Prize Sponsors**



Please register online at  
[www.bhglaar.com](http://www.bhglaar.com)

6330 SAN VICENTE BOULEVARD | SUITE 100 | LOS ANGELES | CALIFORNIA | 90048  
 P 310.967.8800 | F 310.967.8808 | WWW.BHGLAAR.COM

# SUNSHINE & EARLY CLOSINGS.

- High-touch customer service
- Dedicated support team
- Jumbo pricing
- Variety of adjustable rate options
- 50 state lending authority
- Quick turn times and funding



**Dana Dukelow**

Senior Loan Originator  
NMLS# 252986

**Direct: 323.394.1909**  
eFax: 866.261.6655

DDukelow@WintrustMortgage.com  
www.DanaDukelow.com



**Doug Burton**

Branch Manager  
NMLS# 251062

**Direct: 323.828.3684**  
Fax: 310.943.2498

DBurton@WintrustMortgage.com  
www.BurtonLoans.com



**Eli Pindler**

Loan Originator  
NMLS# 260919

**Direct: 310.203.0309**  
Fax: 805.231.3359

EPindler@WintrustMortgage.com  
www.EliPindler.com



**Nancy Everett**

Senior Loan Originator  
NMLS# 374442

**Direct: 818.424.5626 (LOAN)**  
Fax: 310.861.1415

NEverett@WintrustMortgage.com  
www.NancyEverett.com

**WINTRUST**  
MORTGAGE

**NEW LOCATION!**

6255 W. Sunset Blvd, Ste 950  
Hollywood, CA 90028



# MICHAEL GILL

Tony Papillo, Branch Manager, welcomes Michael to the Coldwell Banker® Downtown Los Angeles office.



310.541.2000 | michael.gill@camoves.com | CaIBRE# 01437612



RESIDENTIAL BROKERAGE

# STEVE CHANG

Tony Papillo, Branch Manager, welcomes Steve to the Coldwell Banker® Downtown Los Angeles office.



213.447.7491 | [steve.chang@camoves.com](mailto:steve.chang@camoves.com) | CaIBRE# 00526521



RESIDENTIAL BROKERAGE

# Congratulations.

They say you are known by the company you keep.  
Some of the world's most successful luxury real estate agents keep company with us.

Cristian E. David, Vice President/Brokerage Manager, is very pleased to recognize and congratulate these agents for their outstanding performance in 2016. Their success was phenomenal and we look forward to its continuation.



**BARBARA  
BOYLE**  
310.255.5403  
barbara.boyle@sothebyshomes.com  
CALBRE: 01259141



**ROBERT  
RADCLIFFE**  
310.255.5454  
rob.radcliffe@sothebyshomes.com  
CALBRE: 01132704



**JAMES  
RESPONDEK**  
310.488.4400  
james.respondek@sothebyshomes.com  
CALBRE: 00713972



**ENZO  
RICCIARDELLI**  
310.255.5467  
enzo.ricciardelli@sothebyshomes.com  
CALBRE: 0197604



**JOAN  
SATHER**  
310.740.0302  
joan.sather@sothebyshomes.com  
CALBRE: 00575771



**SUSAN  
MONTGOMERY**  
310.254.7022  
susan.montgomery@sothebyshomes.com  
CALBRE: 01269732



**PAULA  
ROSS-JONES**  
310.880.9750  
paula.rossjones@sothebyshomes.com  
CALBRE: 01157578



**GRAHAM  
LARSON**  
310.303.9397  
graham.larson@sothebyshomes.com  
CALBRE: 01905737



**MARLENE  
OKULICK**  
310.890.4498  
marlene.okulick@sothebyshomes.com  
CALBRE: 0125717



**TOM  
HACKETT**  
310.400.4140  
tom.hackett@sothebyshomes.com  
CALBRE: 00874198

# Welcome.

They say you are known by the company you keep.

We are fortunate to be known for the exceptional agents that distinguish us in communities all over the world. Today in our Pacific Palisades Brokerage, we are pleased and proud to announce several new exceptional associations.

Cristian E. David, Vice President/Brokerage Manager is delighted to welcome the new members of our team in 2016.



**JON BROWN**  
310.593.4351  
jon.brown@sothebyshomes.com  
CALBRE: 01957840



**CASSANDRA CHRISTENSEN**  
310.920.9538  
cassandra.christensen@sothebyshomes.com  
CALBRE: 01922688



**OLGA CRAWFORD**  
310.633.1469  
olga.crawford@sothebyshomes.com  
CALBRE: 02005209



**JESSICA DUBIN**  
310.433.8964  
jessica.dubin@sothebyshomes.com  
CALBRE: 01952210



**VIOLETTA HARGITAY**  
310.367.2190  
violetta.hargitay@sothebyshomes.com  
CALBRE: 01048551



**KATRINA HULSE**  
310.804.5035  
katrina.hulse@sothebyshomes.com  
CALBRE: 02009033



**NICK KORDIAK**  
310.595.4941  
nick.kordiak@sothebyshomes.com  
CALBRE: 01994316



**LON LEVIN**  
818.268.9953  
lon.levin@sothebyshomes.com  
CALBRE: 01965638



**STEPHANIE NORTHCUTT**  
310.461.5125  
stephanie.northcutt@sothebyshomes.com  
CALBRE: 02016299



**LIAM PALMIERI**  
310.266.7110  
liam.palmieri@sothebyshomes.com  
CALBRE: 02017651



**ALESSANDRO PERDICHIZZI**  
310.986.5552  
alessandro.perdichizzi@sothebyshomes.com  
CALBRE: 01973448



**KIMBERLY STUART**  
818.746.0418  
kimberly.stuart@sothebyshomes.com  
CALBRE: 01438945



**SAMUEL VADEN**  
424.901.3595  
samuel.vaden@sothebyshomes.com  
CALBRE: 01947808



**MEHRY ZIAI**  
310.897.0762  
mehry.ziai@sothebyshomes.com  
CALBRE: 00778772



**MANALEE ZARRABIAN**  
310.941.4692  
manalee.zarrabian@sothebyshomes.com  
CALBRE: 02006836

## SOTHEBYSHOMES.COM

PACIFIC PALISADES BROKERAGE | 15308 SUNSET BOULEVARD, PACIFIC PALISADES, CALIFORNIA 90272 | 310.454.0080 | SOTHEBYSHOMES.COM/SOCAL

LISTED IN ALPHABETICAL ORDER. RANKINGS BASED ON CLOSED SALES VOLUME OF UNITED STATES SALES PROFESSIONALS. REAL ESTATE AGENTS AFFILIATED WITH SOTHEBY'S INTERNATIONAL REALTY, INC. ARE INDEPENDENT CONTRACTOR SALES ASSOCIATES AND ARE NOT EMPLOYEES OF SOTHEBY'S INTERNATIONAL REALTY. FEATURED PHOTO: BEVERLY HILLS, CA | WEB ID #0344078.

Sotheby's International Realty and the Sotheby's International Realty logo are registered (or unregistered) service marks used with permission. Sotheby's International Realty Affiliates LLC fully supports the principles of the Fair Housing Act and the Equal Opportunity Act. Each Office is Independently Owned And Operated.

# Congratulations.

They say you are known by the company you keep.  
Some of the world's most successful luxury real estate agents keep company with us.

Cristian E. David, Vice President/Brokerage Manager, is very pleased to recognize and congratulate these agents for their outstanding performance in 2016. Their success was phenomenal and we look forward to its continuation.



**ROBIN  
WALPERT**  
310.480.4980  
robin.walpert@sothebyshomes.com  
CALBRE: 01237116



**GEORGE  
GHIZ**  
310.283.8877  
geroge.ghiz@sothebyshomes.com  
CALBRE: 01399527



**LEE  
JOHNSON**  
310.892.2244  
lee.johnson@sothebyshomes.com  
CALBRE: 01259992



**LORAE  
TAYLER**  
310.864.6910  
lorae.tayler@sothebyshomes.com  
CALBRE: 00940890



**DON  
GREENE**  
310.403.0634  
don.greene@sothebyshomes.com  
CALBRE: 01174401



**TRIANAE  
RICHARDSON**  
310.890.3493  
triana.richardson@sothebyshomes.com  
CALBRE: 01438356



# Welcome.

They say you are known by the company you keep.

We are fortunate to be known for the exceptional agents that distinguish us in communities all over the world.

Today in our Santa Monica - Venice Brokerage, we are pleased and proud to announce several new exceptional associations.

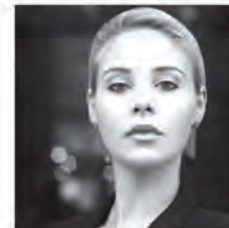
Cristian E. David, Vice President/Brokerage Manager is delighted to welcome the new members of our team in 2016.



**LAITH  
AGHA**  
831.596.9158  
laith.agha@sothebyshomes.com  
CALBRE: 02018325



**CYNTHIA  
BLAGG**  
949.466.2455  
cynthia.blagg@sothebyshomes.com  
CALBRE: 01148682



**SHAYLA  
BEESLEY**  
424.212.1236  
shayla.beesley@sothebyshomes.com  
CALBRE: 02018067



**SUSIE  
DELAVA**  
213.700.8709  
susie.delava@sothebyshomes.com  
CALBRE: 02001813



**DON  
GREENE**  
310.403.0634  
don.greene@sothebyshomes.com  
CALBRE: 01174401



**TRIANAE  
RICHARDSON**  
310.890.3493  
triana.richardson@sothebyshomes.com  
CALBRE: 01438356



**BRENDA  
STORY**  
818.746.0418  
brenda.story@sothebyshomes.com  
CALBRE: 01973448

---

**SOTHEBYSHOMES.COM**

SANTA MONICA - VENICE BROKERAGE | 2216 MAIN STREET, SUITE 101, SANTA MONICA, CALIFORNIA 90405 | 310.396.5508 | [SOTHEBYSHOMES.COM/SOCAL](http://SOTHEBYSHOMES.COM/SOCAL)

LISTED IN ALPHABETICAL ORDER. RANKINGS BASED ON CLOSED SALES VOLUME OF UNITED STATES SALES PROFESSIONALS. REAL ESTATE AGENTS AFFILIATED WITH SOTHEBY'S INTERNATIONAL REALTY, INC. ARE INDEPENDENT CONTRACTOR SALES ASSOCIATES AND ARE NOT EMPLOYEES OF SOTHEBY'S INTERNATIONAL REALTY. FEATURED PHOTO: LOS ANGELES, CA | WEB ID #1350041.

Sotheby's International Realty and the Sotheby's International Realty logo are registered (or unregistered) service marks used with permission. Sotheby's International Realty Affiliates LLC fully supports the principles of the Fair Housing Act and the Equal Opportunity Act. Each Office is Independently Owned And Operated.



# Welcome.

They say you are known by the company you keep. Some of the world's most successful luxury real estate agents keep company with us. We are proud to welcome **Todd Nathanson** to the **Sotheby's International Realty - Brentwood Brokerage**.



## Todd Nathanson

CalBRE: 01414987 / Realtor®  
todd.nathanson@sothebyshomes.com  
310.748.5423

SOTHEBY'S INTERNATIONAL REALTY  
*Brentwood Brokerage*  
11911 San Vicente Boulevard, Suite 200 | 310.481.6262  
[sothebyshomes.com/socal](http://sothebyshomes.com/socal)

**Sotheby's**  
INTERNATIONAL REALTY

**SOTHEBYSHOMES.COM/SOCAL**

**BRENTWOOD BROKERAGE | 11911 SAN VICENTE BOULEVARD, SUITE 200, LOS ANGELES, CA 90049 | 310.481.6262**

REAL ESTATE AGENTS AFFILIATED WITH SOTHEBY'S INTERNATIONAL REALTY, INC. ARE INDEPENDENT CONTRACTOR SALES ASSOCIATES AND ARE NOT EMPLOYEES OF SOTHEBY'S INTERNATIONAL REALTY.  
FEATURED PHOTO: LOS ANGELES, CA | WEB ID #0355814.

Sotheby's International Realty and the Sotheby's International Realty logo are registered (or unregistered) service marks used with permission. Sotheby's International Realty Affiliates LLC fully supports the principles of the Fair Housing Act and the Equal Opportunity Act. Each Office is Independently Owned And Operated.



PASADENA BRANCH WELCOMES

**Scott Groves, Justin Bayle,  
Karol Mosquera & the  
LendLA Team**

**When it comes  
to Mortgage  
Financing, we  
offer more!**

**CONVENTIONAL**

*Freddie Mac Super Conforming  
Loan Program*

*No up-front mortgage  
insurance premium*

*Owner-occupied, second  
homes & investment properties*

**FHA**

*Owner-occupied primary  
residence*

*Down payments may be  
gifted 3.5% down*

**JUMBO**

*Delegated underwriting  
up to \$3 million*

*Competitive rates*

*1st time homebuyers  
allowed*

**VA**

*No down payment  
required*

*No monthly mortgage  
insurance premiums*

**CONTACT US!**

📞 818.679.5188    📍 117 East Colorado Blvd, Suite 460, Pasadena, CA 91105  
🌐 [branch.newamericanfunding.com/pasadenacoloradoblvd](http://branch.newamericanfunding.com/pasadenacoloradoblvd)

*Introducing our professional lending team, proudly serving Pasadena & surrounding areas.*



**Scott Groves**  
*Branch Manager*  
NMLS# 365178  
818.679.5188



**Justin Bayle**  
*Sr. Loan Officer*  
NMLS# 308718  
818.425.8867



**Robert Trujillo**  
*Sales Manager*  
NMLS# 267403  
818.335.2381



**Cole Strange**  
*Loan Officer*  
NMLS# 1339542  
626.255.5414



**Jason Berriz**  
*Loan Officer*  
NMLS# 256177  
661.972.1092



**Vina Guerrero**  
*Loan Officer*  
NMLS# 262835  
562.522.6315



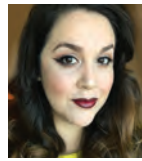
**Ron Sequeira**  
*Loan Consultant*  
NMLS# 40105  
310.409.0286



**Patrick O'Driscoll**  
*Loan Consultant*  
NMLS# 847493  
818.681.0873



**Karol Mosquera**  
*Sr. Loan Officer*  
NMLS# 271378  
321.754.1689



**Stephanie Barbosa**  
*Loan Officer Assistant*  
NMLS# 989795  
626.598.5412



**Natalie Fornelli**  
*Production Assistant*



**Julian Martinez**  
*Production Assistant*



**Amanda Tibma**  
*Production Assistant*



**Jeremiah Snyder**  
*Senior Funder*



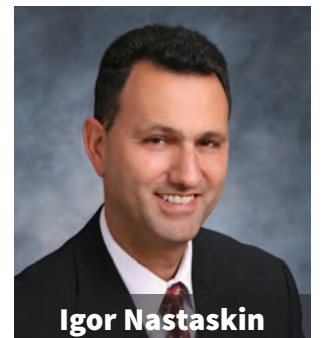
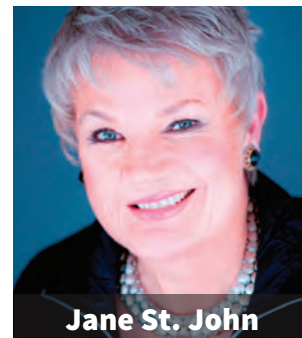
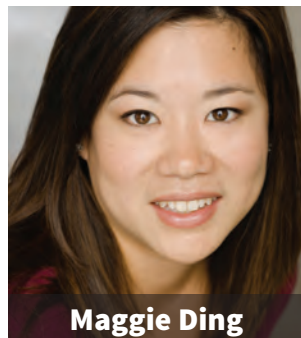
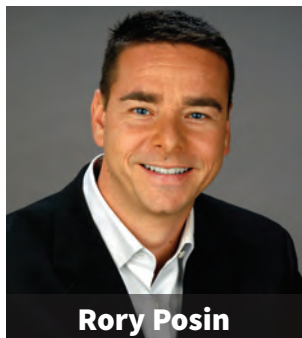
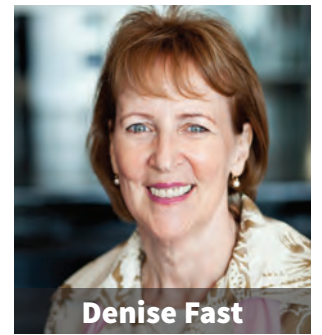
LendLA Team [www.lendla.com](http://www.lendla.com)





**RE/MAX**<sup>®</sup>  
ESTATE PROPERTIES

## Congratulations to the 20 Top Producers of 2016





# RE/MAX® ESTATE PROPERTIES

## Congratulations to the #1 Top Producer in Each Office for 2016



Beverly Hills  
**Charles Le**



El Segundo  
**Bill Ruane**



Hermosa Beach  
**Jay Deai**



Manhattan Beach  
**Rob Freedman**



Manhattan Beach-Hghlnd  
**Jane Sager**



Malaga Cove  
**Igor Nastaskin**



Marina/Venice  
**Denise Fast**



Miraleste/San Pedro  
**Phyllis Weitzman**



Redondo Beach  
**Anne Hulegard**



Santa Monica  
**Jim Brunet**



Silver Spur  
**Gayle Probst**



South Bay  
**Dennis Hartley**



West LA  
**Rory Posin**

## Congratulations to the 10 Top Teams



**Stephen Haw Team**



**Jerry & Laura Yutronich**



**Watts & Associates**



**Cari & Britt**



**Freedman Geilman Group**



**Berman Kandel**



**Kirby & Haley Larson**



**Team McGuire**



**Mike & Sachi**



**The Murray Team**

# Increase Your Visibility

Take Advantage of our Money Saving Packages 

**Agent Property Full-Page B&W & Showcase w/Color Photo**  
**\$129 (\$29 SAVINGS)**

**Agent Property Full-Page Color & Showcase w/Color Photo**  
**\$430 (\$44 SAVINGS)**

**Agent Property Full-Page Color & Agent Property Full-Page B&W**  
**\$479 (\$55 SAVINGS)**



**4,500 +**

*Magazines  
Delivered Weekly*

Call a LIVE Customer Service Representative to find out more!  
310-358-1833 or 760-459-8712

# JOHN AAROE GROUP



# PACIFIC UNION

## THE ULTIMATE CALIFORNIA COMPANY

When LA's iconic John Aaroe and Pacific Union's visionary CEO Mark A. McLaughlin merged their companies, they created an incomparable independent West Coast powerhouse.

With over \$10 billion in annual sales, 1,100 real estate professionals and 38 offices, the combined firm ranks eighth in the nation.

Now the excitement begins as we leverage expanded connections, technology, international reach and market intel to give our associates an unbeatable advantage.

# CULTURE

It's simple. It's about our people.



John Aaroe has always been known for his “people first” approach. Now, we’ve joined with a partner who shares our commitment to creating an environment where experienced real estate professionals excel. We recognize that nothing happens without you, your skills and passion. So everything we do is focused on helping you succeed.



# VISION

It's clear.

The real estate business you have thrived in is changing — rapidly. Are you aligned with a company actively looking ahead and paving the way for your success years down the road?

That's the visionary goal of this new partnership.

You'll reap the rewards of forward-thinking strategic alliances, industry connections and a long-term major investment in technology.

**What are we working on?** Contact us ... we'll tell you.







# CONNECTIONS

It's about who you know, and who knows you.

Now John Aaroe associates are connected with 700 Pacific Union real estate professionals in San Francisco, Silicon Valley and Napa Valley, and we're already sharing referrals and ideas.

With this merger, we're also under the same roof as The Mark Company, one of the nation's premier urban residential marketing and sales firms with offices in LA and San Francisco.

---

# REACH

Broadening your horizons.

Los Angeles and San Francisco rank among the top five cities in the world for international real estate investors, dominated by those from China. And your clients want to know how you're reaching them.

Along with our 20 global Aaroe websites and strategic partnerships with key international real estate portals, our company facilitates the securing and handling of business from Chinese investors through a full-time concierge in Beijing. Aggressive plans are underway to expand outreach to other key international feeder markets.



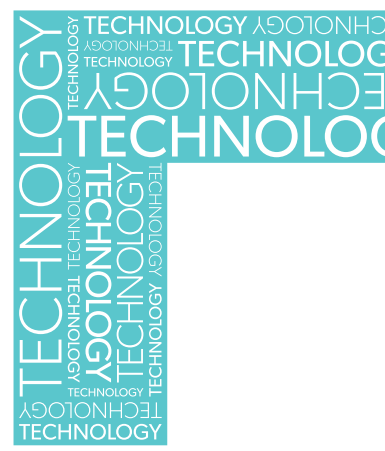
# TECHNOLOGY

Stay connected. Stay ahead.

For us, it's not about tech for tech's sake. It's about giving you tools and programs specifically designed to help you reach your peak performance.

We're connecting the cloud to the street — providing tools you can use to access information fast, stay connected to your clients and attract new business. We're collaborating with tech providers and also developing in-house solutions. We have a Silicon Valley Innovation Lab designed to seek out next-gen tools and systems to enhance your life now.

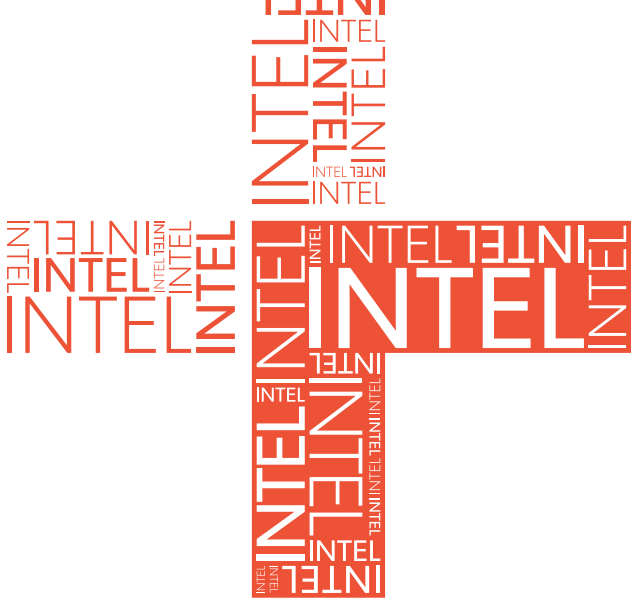
**We won't leave you stranded** — we'll help you implement the tools that make sense for your business.



## DATA

We get it.

It's one thing to amass Big Data. It's another to harness it, creating the usable information you need to help your clients get the best results. Among the things we're working on now: The ability to predict who your likely buyer is and what they want, then determine how and where to position your listing online to capture their attention.



## INTEL

You need the info.

You need to be prepared when your client looks to you to see the future. Our on-staff Chief Economist interprets the business landscape to give you an incisive take on real estate trends, market dynamics and economic conditions. It's intel that helps you understand where the market is now, see where it's headed, and confidently counsel your clients.



## HOME

You've arrived.

If you feel disconnected where you are, coming here will show you how much more you can do with the right company. One that not only recognizes and values your skills, but constantly strengthens them through innovation. At a place like this, you can focus on what you do best now — and not worry about your future.

Find out more.



[themarkcompany.com](http://themarkcompany.com)



JOHN AAROE GROUP

[aaroe.com](http://aaroe.com)



[pacificunion.com](http://pacificunion.com)



Berkshire Hathaway HomeServices California Properties  
proudly announces:



## **KIRK HOFFMAN**

---

Branch Manager | Studio City Office

Kirk assumes leadership of the Studio City branch after serving admirably  
as Assistant Manager the past year.

310.890.3940

khoffman@bhhsca.com | CalBRE 01755796

Studio City Office | 818.933.2400

13300 Ventura Blvd | Sherman Oaks, CA 91423

---

**BERKSHIRE HATHAWAY**  
HomeServices  
California Properties



Berkshire Hathaway HomeServices California Properties  
proudly announces:



## **GLADYS AZENZER**

---

Branch Manager | Sherman Oaks-Metro Arts Office

After managing the Sherman Oaks and Studio City offices since they opened over a decade ago,  
Gladys will now focus solely on the Sherman Oaks office.

818.692.1618

gladysazenger@bhhsca.com | CalBRE 00710325

Sherman Oaks-Metro Arts Office | 818.528.3200

14141 Ventura Boulevard, Suite 8 | Sherman Oaks, CA 91423

---

**BERKSHIRE HATHAWAY**  
HomeServices  
California Properties

---



## CARMINE SABATELLA

“Quality and beauty are what represent Berkshire Hathaway HomeServices,  
and I’m excited to sell both!” - *Carmin*e



Berkshire Hathaway HomeServices California Properties and Marilyn Simon, Branch Manager,  
are pleased to welcome Carmine Sabatella to our Pasadena office.

626.394.9212

homesbycarmin@gmail.com | CalBRE# 01945152

540 South Lake Ave | Pasadena, CA 91101

**BERKSHIRE HATHAWAY**  
HomeServices  
California Properties

# THE MLS SUMMIT 2017

Effective Online Marketing Strategies and Campaigns

Real Estate Best Practices for 2016

Tech to Win More Business and Make Your Life Easier

## The MLS Technology Summit™

Thursday, April 6, 2017

9am-4pm (Registration starts at 8am)

Skirball Cultural Center  
2701 N. Sepulveda Blvd.  
Los Angeles, CA 90049

Tickets:  
Realtor - \$110 (\$49 with promo code)  
MLO - \$120 (\$59 with promo code)



\*Parking, lunch and beverages included!

For tickets and more information, go to... [summit.themls.com](http://summit.themls.com) or call The MLS™ Help Desk: (310) 358-1833

Powered By



# The best of the best working for you

Top 200 (#180) Mortgage Originators  
in America 2015\*

**Sam Batayneh**

SVP of Mortgage Lending

**O: (310) 806-4621**

**C: (310) 770-5539**

SamB@rate.com



I understand what it takes to keep all parties informed and provide a smooth mortgage process from pre-approval to closing.

- I specialize in Jumbo loans.
- I have full knowledge of the financial markets in relation to mortgage financing.

- I'm dedicated to recognizing your client's individual needs.
- I have the ability to structure and explain complex loans in an easy and clear way.

**CONTACT ME TODAY, LET'S GET TO WORK!**

## Meet my team



Heather Christensen

Sales Assistant

**(424) 325-0072**

heather.christensen@rate.com



Tyler von der Lieth

Sales Assistant

**(424) 325-0071**

tyler.vonderlieth@rate.com



Dawn Huml

Sales Assistant

**(424) 325-0083**

dawn.huml@rate.com



Lori Nugen

Sales Assistant

**(310) 806-4619**

lori.nugen@rate.com

CHAIRMAN'S  CIRCLE

12121 Wilshire Blvd, Ste 350  
Los Angeles, CA 90025