



#1 Originator In The Country By Loan Size!

Over \$462 Million of Loans Originated in 2016

3/1 ARM Interest-only

2.999%

3.181% APR

Interest is set for 3 years and then can be adjusted each year thereafter, based on the current index. Payments may increase to pay back both principal and interest. The rates referenced above are available only for 1st Lien Loans.

310-859-0488

<h3>Foreign National Loans</h3> <p>From \$500K to \$25 million.</p>	<h3>Self Employed & Real Estate Investor</h3> <p>1031 Exchange OK</p>	<h3>No Tax Return Loans</h3>
---	---	------------------------------

No tax return loans may require other forms of income verification and may have a higher interest rate and higher points or fees, than other loans. Not all applicants will qualify.

NATIONALLY RANKED: **Scotsman | Guide media** **National Mortgage News** AS SEEN IN THE **WALL STREET JOURNAL**

CHRIS FURIE
BRE 01004991 | NMLS 357449
chris@insigniamortgage.com



DAMON GERMANIDES
BRE 01794261 | NMLS 317894
damon@insigniamortgage.com

9595 Wilshire Blvd., #205, Beverly Hills, CA 90212 | 310-859-0488 | www.insigniamortgage.com

©2017 Insignia Mortgage, Inc. Sampling of rates as of February 1, 2017. (1) No Tax Return products require other forms of income verification and asset verification in lieu of tax returns. Not all applicants will qualify. Some products we offer may have a higher interest rate, more points or more fees than other products requiring documentation. Minimum FICO, reserve, and other requirements apply. Contact your loan officer for additional program guidelines, restrictions, and eligibility requirements. Rates, points, APRs and programs are subject to change without notice. Loan values (LTV) are based on bank appraisal. Actual closing time will vary based on borrower qualifications and loan terms. Insignia Mortgage, Inc., is a real estate broker licensed by the CA Bureau of Real Estate, BRE #01969620, NMLS #1277691. (2) With an interest-only mortgage payment, you will not pay down the loan's principal balance during the interest-only period. Once the interest-only period ends, your payment will increase to pay back the principal and interest. Rates are subject to increase over the life of the loan. Contact your Insignia Mortgage, Inc. loan officer to determine what your payments might be once the interest-only period ends.



STAGING AND INTERIORS • RESIDENTIAL • COMMERCIAL • LUXURY FURNITURE LEASES
WEST AND EAST COAST • 310 204 5353 • www.meridithbaer.com



MERIDITH BAER HOME *2*



ERIN HICKEY
DIVISIONAL SALES MANAGER
310.849.6845 | NMLS# 1000261



STEPHANIE KATES
818.231.8960 | NMLS# 481277



DANNIEL GAT
424.236.7844 | NMLS# 261049



WILFREDO PERDOMO
310.694.2089 | NMLS# 1032590



KEITH MURPHY
714.309.1140 | NMLS# 330827



ADAM VILLANEDA
951.251.5342 | NMLS# 269833



ELI WEINBERGER
310.927.2467 | NMLS# 486143



CHRISTIAN CRANDALL
323.707.3532 | NMLS# 488146



CAROLINE MCPHERSON
310.913.3198 | NMLS# 260493



BUDDY EPSTEIN
310.968.4644 | NMLS# 250664



STEVE WETZEL
714.594.9549 | NMLS# 829535

PERL

YOUR LENDER FOR LIFE



TODD SEABOLD
DIVISIONAL VICE PRESIDENT

*Great Rates. Custom Solutions. Seamless Process.
That's the PERL Difference.*

We understand that buying a home and refinancing a mortgage are big decisions and can present challenges and uncertainties. At PERL, we're committed to overcoming these challenges for you while giving you access to competitive rates and the peace of mind of working with a local, dedicated mortgage expert from start to finish. The entire process from underwriting to funding takes place all within our South Bay office ensuring you a smooth transaction from the moment you contact us all the way through closing.



PERL Mortgage, Inc. is an Illinois residential mortgage licensee (MB0004358) and equal housing lender. Licensed by the California Department of Business Oversight under the California Residential Mortgage Lending Act. NMLS #19186



DEALBREAKERS.

Mark Cohen, Broker
BRE#: 1016103 - NMLS#: 37230
markcohen@cohenfinancialgroup.com

Seth Cohen, Broker
BRE#: 01935101 - NMLS#: 982573
seth@cohenfinancialgroup.com

We are the industry's top mortgage professionals getting more complex deals done than anyone else.

Custom-Fit Solutions

A unique and personalized approach to every situation including **self-employed**, **high-net-worth**, and **foreign borrowers**.

Relationship-Based Client Experience

The highest reputation in the industry with excellent rapport with Sellers' Agents.

Quick Closures

Direct channel to banks' executives for quicker approvals and unmatched professional expertise to get deals done.

Transparency & Communication Throughout The Entire Process

Consistent execution on all loans with no surprises.

\$10 Billion

LOANS FUNDED

18,000

LOANS CLOSED

30+

YEARS EXPERIENCE



Sasan Abrams
sabrams@cohenfinancialgroup.com
BRE 01959640 - NMLS 1194434
Originator Specializing in Multi-Family & New Development

 **COHEN**
financial group
cohenfinancialgroup.com



P 310.777.5401 F 310.777.5410

*By dollar volume in 2014, Scotsman Guide, April 2015.

©2016 Cohen Financial Group, a division of CS Financial, Inc. All rights reserved. Not all applicants will qualify. CS Financial, Inc. is a real estate broker licensed by the CA Bureau of Real Estate, lic# 01257559, NMLS# 31132. Equal housing lender.

Loans are a Puzzle



You need a local mortgage expert to help you fit the right pieces together.

- Works directly with you as well as your client
- Stellar support staff, always keeping buyers informed and engaged in every transaction
- No deal is too easy or too complicated
- A true partner you can count on for all your escrows

Let us put all the pieces together on your next sale.



HomeBridge Financial Services proudly presents
Your local mortgage experts in the Los Angeles area

Follow us on social media:



Mike Hartunian

Branch Manager
Mortgage Loan Originator
NMLS# 247330

Direct: (818) 728-3702
mike.hartunian@homebridge.com
www.mikehartunian.com



Joe Parisi

Mortgage Loan Originator
NMLS# 255572

Direct: (818) 728-3703
joe.parisi@homebridge.com
www.josephparisi.com





READY FOR THE SPOTLIGHT.

Same great team, new location.
Hollywood here we come!

High-touch customer service
Dedicated support team
Jumbo pricing

Variety of adjustable rate options
50 state lending authority
Quick turn times and funding



Dana Dukelow
Senior Loan Originator
NMLS# 252986
Direct: 323.394.1909
eFax: 866.261.6655
DDukelow@WintrustMortgage.com
www.DanaDukelow.com



Doug Burton
Branch Manager
NMLS# 251062
Direct: 323.828.3684
Fax: 310.943.2498
DBurton@WintrustMortgage.com
www.BurtonLoans.com



Eli Pindler
Loan Originator
NMLS# 260919
Direct: 310.203.0309
Fax: 805.231.3359
EPindler@WintrustMortgage.com
www.EliPindler.com



Nancy Everett
Senior Loan Originator
NMLS# 374442
Direct: 818.424.5626 (LOAN)
Fax: 310.861.1415
NEverett@WintrustMortgage.com
www.NancyEverett.com

WINTRUST
MORTGAGE

NEW LOCATION!

6255 W. Sunset Blvd, Ste 950
Hollywood, CA 90028





works with **Downtown Women's Center**



During the months of January, February and March the C.A.R.E. Project Volunteers will be working with the Downtown Women's Center.

On Thursday, January 19th, the C.A.R.E. Project will meet at BH/GLAAR's offices at 12:00pm to put together 120 sack lunches that we will take to Downtown Women's Center at 2:30pm and hand out to the women taking advantage of the services provided by the Downtown Women's Center. If you would like to join us and for a list of items we need please email us at info@bhglaar.com.

Thursday, January 19, 2017 - 12:00pm - 3:00pm

BH/GLAAR
 6330 San Vicente Blvd., Suite 100
 Los Angeles, CA 90048

About The C.A.R.E. Project

In January our 2011 President Robin Greenberg launched the C.A.R.E Project, a way for our REALTOR® community to help make a difference one month at a time. Our goal is to focus on the needs and efforts of a different deserving charity each month. By providing our compassion, acceptance and respect we as a group can empower the less fortunate to overcome the obstacles they may face.

It is our right to earn a living, and our choice to help those less fortunate. Whether through a monetary donation, a donation of basic necessities or simply donating a few hours of your time, every little bit is greatly appreciated.



For more information visit
www.bhglaar.com

6330 SAN VICENTE BOULEVARD | SUITE 100 | LOS ANGELES | CALIFORNIA | 90048
 P 310.967.8800 | F 310.967.8808 | WWW.BHGLAAR.COM

THERE ARE PIECES WHICH FURNISH A HOME
AND THOSE WHICH DEFINE IT...



310.556.0418 INQUIRIES@DRESSEDDESIGN.COM WWW.DRESSEDDESIGN.COM

DRESSED
INC. 

CALL OUR OFFICE
FOR A COMPLIMENTARY
DESIGN CONSULTATION
BETH ANN SHEPHERD, PRESIDENT



THE DIGITAL REVOLUTION

We've flipped the industry on its head with innovative online tools like Gateless and the Loan Status Monitor, so your referral partners and clients will never be in the dark again.

“ With about 85% of my business being purchase, **Gateless has been super helpful with my realtor relationships and was a big part of doubling my production from 2015 to 2016.** I'm able to help my agents navigate the site by breaking down the client pipeline and assisting them with unmatched management tools. But, the best part is showing them how they can grow their business right there on the site.”

MATTHEW COLE

NMLS ID #633188

	2015	2016
Total volume	\$30M	\$60.8M
Purchase volume	\$20M	\$50.4M



Be your own CEO Originator. Contact us today to learn more.

James Elliott

Senior Vice President, Divisional Manager

(310) 806-4604

james.elliott@rate.com

Rate.com/CALosAngeles



The Home
Purchase Experts®

12121 Wilshire Blvd, Ste. 350 • Los Angeles, CA 90025

Experts with the most complex Tax Returns

MORE

MORTGAGE OPTIONS.

WAYS TO QUALIFY.

CLOSED LOANS.

**Interest only ARM's
High LTV's**

**Qualify with only
one year tax returns**

**Super Jumbo
Fixed Rate
Up to \$10 M**

**Asset depletion
qualifying
for high-net worth
Clients**

**In-house Private
Money
Can fund in 5 days!**

We Fund:
• **Commercial**
• **Apartment**
• **Construction**
Transactions of all sizes



Gloria Shulman

A Legend in the Industry for More Than 30 Years

9100 Wilshire Blvd
Suite 275 E
Beverly Hills, CA 90212

T. 310-275-3202
F. 310-247-1232
Gloria@centek.com

NMLS 275995
BRE 00659928
www.centek.com

CENTEK
CAPITAL GROUP
Mortgage Bankers & Brokers

*Not all borrowers will qualify for all programs referenced in this ad. CenTek Capital Group is a broker licensed by the CA Bureau of Real Estate NMLS 275995 BRE 00659928

Congratulations.

They say you are known by the company you keep.
Some of the world's most successful luxury real estate agents keep company with us.

Joe Cilic, Senior Vice President/ Brokerage Manager, is very pleased to recognize and congratulate these agents for their outstanding performance in 2016. Their success was phenomenal and we look forward to its continuation.



**SIMON
BEARDMORE**
310.892.6454
simon.beardmore@sothebyshomes.com
CALBRE: 01321605



**GREGORY
BEGA**
213.453.2020
gregory.bega@sothebyshomes.com
CALBRE: 0935802



**LINDSAY
GALBRAITH**
310.916.8622
lindsay.galbraith@sothebyshomes.com
CALBRE: 01873410



**TAB
HOWARD**
310.346.3500
tab.howard@sothebyshomes.com
CALBRE: 01823733



**LISA
MANSFIELD**
310.481.4313
lisa.mansfield@sothebyshomes.com
CALBRE: 01105508



**STEVEN
MORITZ**
310.481.4333
steven.moritz@sothebyshomes.com
CALBRE: 0928961



**JAMES
RUCKER**
310.266.8322
james.rucker@sothebyshomes.com
CALBRE: 01334714



**SHAMON
SHAMONKI**
310.713.4492
shamon.shamonki@sothebyshomes.com
CALBRE: 01455034



**MURRAY
WEISBERG**
310.729.6156
murray.weisberg@sothebyshomes.com
CALBRE: 0906751



**ARI
WINTRAUB**
310.428.5045
ari.wintraub@sothebyshomes.com
CALBRE: 01943483

Welcome.

They say you are known by the company you keep.

We are fortunate to be known for the exceptional agents that distinguish us in communities all over the world. Today in our Brentwood office, we are pleased and proud to announce several new exceptional associations.

Joe Cilic, Senior Vice President/ Brokerage Manager is delighted to welcome the new members of our team.



**KAITLYN
BENSON**
310.922.5317
kaitlyn.benson@sothebyshomes.com
CALBRE: 01999845



**JESSE
EHRlich**
310.467.7801
jesse.ehrlich@sothebyshomes.com
CALBRE: 01943532



**MARGAUX
GLASER**
310.600.7116
margaux.glaser@sothebyshomes.com
CALBRE: 02015030



**KARINE
MAILLIEZ**
310.279.7525
karine.mailliez@sothebyshomes.com
CALBRE: 01984301



**RICK
MORRISON**
310.508.3434
rick.morrison@sothebyshomes.com
CALBRE: 01959485



**IRA
MORSH**
310.970.4820
ira.morsh@sothebyshomes.com
CALBRE: 01052767



**MICHELE
NACHBAR**
310.467.1044
michele.nachbar@sothebyshomes.com
CALBRE: 01978787



**DANIEL
PELKEY**
310.940.5189
daniel.pelkey@sothebyshomes.com
CALBRE: 01791855



**JOSHUA
SNYDER**
818.406.9852
joshua.snyder@sothebyshomes.com
CALBRE: 01988956



**CORRINA
VAUGHN**
310.905.2500
corrina.vaughn@sothebyshomes.com
CALBRE: 01813994

SOTHEBYSHOMES.COM

BRENTWOOD BROKERAGE | 11911 SAN VICENTE BOULEVARD, SUITE 200, LOS ANGELES, CALIFORNIA 90049 | 310.481.6262

LISTED IN ALPHABETICAL ORDER. RANKINGS BASED ON CLOSED SALES VOLUME OF UNITED STATES SALES PROFESSIONALS. REAL ESTATE AGENTS AFFILIATED WITH SOTHEBY'S INTERNATIONAL REALTY, INC. ARE INDEPENDENT CONTRACTOR SALES ASSOCIATES AND ARE NOT EMPLOYEES OF SOTHEBY'S INTERNATIONAL REALTY. FEATURED PHOTO: MALIBU, CA | WEB ID #0355670.

Sotheby's International Realty and the Sotheby's International Realty logo are registered (or unregistered) service marks used with permission. Sotheby's International Realty Affiliates LLC fully supports the principles of the Fair Housing Act and the Equal Opportunity Act. Each Office is Independently Owned And Operated.

GIBSON INTERNATIONAL WELCOMES



MARTA K. **SAMULON**

310.496.5996 | martasamulon@gibsonintl.com

A real estate professional for almost 30 years, Marta Samulon is one of the top sales associates in Pacific Palisades and the Westside of Los Angeles. Marta has regularly been among her company's top 1% of sales associates nationwide, as well.

Marta specializes in the West Los Angeles real estate market, including the communities of Pacific Palisades, Brentwood, Santa Monica and Sunset Mesa. She is well known in the real estate brokerage community and among her clients for her integrity, thoroughness and attention to detail – qualities that have enabled her to rise to the top of her profession, and succeed in “up” or “down” real estate markets.

Marta's clients repeatedly describe her as “persistent, possessing positive energy and excellent negotiating skills, diligent, reliable, patient, honest throughout showing, advertising and negotiations processes.” Out of area sellers, sometimes thousands of miles away, commend her for “handling all aspects of the transaction for them smoothly, in a calm, professional manner,” and for “going very far beyond the call of duty.” Buyers have thanked her for her “knowledge of today's housing market,” and for being “attentive, friendly, and having caring concern for their real estate needs.”

Marta and her family have lived in Pacific Palisades and the adjacent Sunset Mesa areas for over 30 years, giving her an intimate knowledge of those communities and housing markets. Her daughters attended local schools and the University of California.

Prior to entering the real estate field, Marta was a researcher with The Rand Corporation in Santa Monica, where she acquired valuable communications and research skills directly applicable to her work in real estate. Marta attended the University of California at Berkeley, where she received her B.A. in Political Science and Master's in Public Policy.

She is a native of Chile, South America, and is fluent in Spanish.



PASADENA BRANCH WELCOMES

Scott Groves, Justin Bayle, & the LendLA Team

When it comes to Mortgage Financing, we offer more!

CONVENTIONAL

Freddie Mac Super Conforming Loan Program

No up-front mortgage insurance premium

Owner-occupied, second homes & investment properties

FHA

Owner-occupied primary residence

Down payments may be gifted 3.5% down

JUMBO

Delegated underwriting up to \$3 million

Competitive rates

1st time homebuyers allowed

VA

No down payment required

No monthly mortgage insurance premiums

CONTACT US!



818.679.5188



117 East Colorado Blvd, Suite 460, Pasadena, CA 91105



branch.newamericanfunding.com/pasadenacoloradoblvd

Introducing our professional lending team, proudly serving Pasadena & surrounding areas.



Scott Groves
Branch Manager
NMLS# 365178
818.679.5188



Justin Bayle
Business Development Associate
818.425.8867



Robert Trujillo
Sales Manager
NMLS# 267403
818.335.2381



Cole Strange
Loan Officer
NMLS# 1339542
626.255.5414



Jason Berriz
Loan Officer
NMLS# 256177
661.972.1092



Vina Guerrero
Loan Officer
NMLS# 262835
562.522.6315



LendLA Team
www.lendla.com



Ron Sequeira
Loan Consultant
NMLS# 40105
310.409.0286



Patrick O'Driscoll
Loan Consultant
NMLS# 847493
818.681.0873



Stephanie Barbosa
Loan Officer Assistant
NMLS# 989795
626.598.5412



Natalie Forlani
Production Assistant



Julian Martinez
Production Assistant



Amanda Tibma
Production Assistant



Jeremiah Snyder
Senior Funder



Licensed by the Department of Business Oversight under the California Residential Mortgage Lending Act License. NMLS ID#6606. VA Lender ID #900572-00-00. All products are not available in all states. All options are not available on all programs. All programs are subject to borrower and property qualifications. Rates, terms and conditions are subject to change without notice. © New American Funding. New American and New American Funding are registered trademarks of Broker Solutions Inc. dba New American Funding. All Rights Reserved. Corporate Office is located at 14511 Myford Road, Suite 100, Tustin CA 92780. Phone (800) 450-2010. 1/2017



CalBRE #00983568 and #01879720



Photo Credit: Brian Holm, Avenue Eye

Los Angeles • Beach Cities • Palos Verdes

Expertise RE/MAX agents sell more real estate than any other brand

RE/MAX leads the industry in professional designations, illustrating increased expertise in working with buyers and sellers

Power Broker #27 RIS Media Top 500 Power Brokers; Broker of the Year; Named in the Most Powerful Leaders in Real Estate 2017

International Over 111,188 agents in nearly 100 countries, a greater worldwide presence than any other real estate brand

Local Markets RE/MAX Estate Properties has 17 highly successful offices from in southern California from Santa Monica to Palos Verdes. RE/MAX is continuing at an accelerated growth rate!

Giving Back We WALK, RUN, SWIM, and play to raise funds that benefit worthy local organizations like the Children’s Miracle Network Hospitals, Susan G. Koman, and the communities we are fortunate to serve

Growth RE/MAX Estate Properties is seeking quality agents for our expanding offices as well as our new West Los Angeles/Westwood office. For a confidential interview, contact **Monte Hartman**, Regional Manager at **310.559.5570** or MHartman@eplahomes.com

725 Local Agents • 17 Offices • Luxury Residential • Commercial Investment Division • International

Santa Monica | Venice | West LA / Westwood | Marina Del Rey | Silicon Beach | Beverly Hills | San Pedro | El Segundo | Manhattan Beach
 Downtown Manhattan Beach | Hermosa Beach | Redondo Beach | Torrance | Palos Verdes Estates | Rolling Hills Estates | Rancho Palos Verdes

JOHN AAROE GROUP



PACIFIC UNION

THE ULTIMATE CALIFORNIA COMPANY

When LA's iconic John Aaroe and Pacific Union's visionary CEO Mark A. McLaughlin merged their companies, they created an incomparable independent West Coast powerhouse.

With over \$10 billion in annual sales, 1,100 real estate professionals and 38 offices, the combined firm ranks eighth in the nation.

Now the excitement begins as we leverage expanded connections, technology, international reach and market intel to give our associates an unbeatable advantage.

CULTURE

It's simple. It's about our people.



John Aaroe has always been known for his “people first” approach. Now, we’ve joined with a partner who shares our commitment to creating an environment where experienced real estate professionals excel. We recognize that nothing happens without you, your skills and passion. So everything we do is focused on helping you succeed.



VISION

It's clear.

The real estate business you have thrived in is changing — rapidly. Are you aligned with a company actively looking ahead and paving the way for your success years down the road?

That's the visionary goal of this new partnership.

You'll reap the rewards of forward-thinking strategic alliances, industry connections and a long-term major investment in technology.

What are we working on? Contact us ... we'll tell you.



THE ULTIMATE CALIFORNIA COMPANY



CONNECTIONS

It's about who you know, and who knows you.

Now John Aaroe associates are connected with 700 Pacific Union real estate professionals in San Francisco, Silicon Valley and Napa Valley, and we're already sharing referrals and ideas.

With this merger, we're also under the same roof as The Mark Company, one of the nation's premier urban residential marketing and sales firms with offices in LA and San Francisco.

REACH

Broadening your horizons.

Los Angeles and San Francisco rank among the top five cities in the world for international real estate investors, dominated by those from China. And your clients want to know how you're reaching them.

Along with our 20 global Aaroe websites and strategic partnerships with key international real estate portals, our company facilitates the securing and handling of business from Chinese investors through a full-time concierge in Beijing. Aggressive plans are underway to expand outreach to other key international feeder markets.



TECHNOLOGY

Stay connected. Stay ahead.

For us, it's not about tech for tech's sake. It's about giving you tools and programs specifically designed to help you reach your peak performance.

We're connecting the cloud to the street — providing tools you can use to access information fast, stay connected to your clients and attract new business. We're collaborating with tech providers and also developing in-house solutions. We have a Silicon Valley Innovation Lab designed to seek out next-gen tools and systems to enhance your life now.

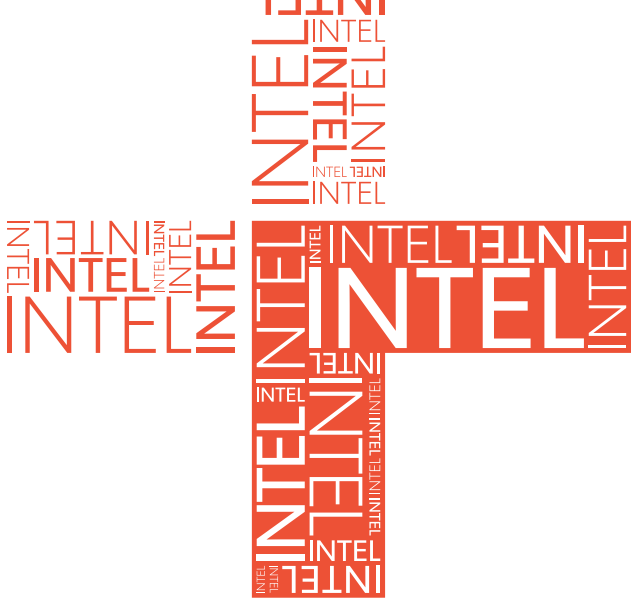
We won't leave you stranded — we'll help you implement the tools that make sense for your business.



DATA

We get it.

It's one thing to amass Big Data. It's another to harness it, creating the usable information you need to help your clients get the best results. Among the things we're working on now: The ability to predict who your likely buyer is and what they want, then determine how and where to position your listing online to capture their attention.



INTEL

You need the info.

You need to be prepared when your client looks to you to see the future. Our on-staff Chief Economist interprets the business landscape to give you an incisive take on real estate trends, market dynamics and economic conditions. It's intel that helps you understand where the market is now, see where it's headed, and confidently counsel your clients.



HOME

You've arrived.

If you feel disconnected where you are, coming here will show you how much more you can do with the right company. One that not only recognizes and values your skills, but constantly strengthens them through innovation. At a place like this, you can focus on what you do best now — and not worry about your future.

Find out more.



themarkcompany.com



aaroe.com



pacificunion.com

AARON KIRMAN

PARTNERS

Welcome Yawar Charlie & Karen Sanchez



We are pleased to welcome
Yawar Charlie & Karen Sanchez
to Aaron Kirman Partners

Yawar & Karen can be reached at:
323.547.8900 (Yawar) | yawarcharlie.com
323.383.3753 (Karen) | homesbykaren@gmail.com



JOHN AAROE GROUP

BEVERLY HILLS

BRENTWOOD

SUNSET STRIP

BALDWIN HILLS

PASADENA

SHERMAN OAKS

STUDIO CITY

TOLUCA LAKE

DOWNTOWN LA

MARCO GONZALEZ

Claudia Storey, Branch Manager, welcomes
Marco to the Coldwell Banker® Arcadia office.



714.926.5352 | marcog@coldwellbanker.com | CaIBRE# 01985745



RESIDENTIAL BROKERAGE

TOP GROUPS OF 2016



RARE PROPERTIES
Kennon Earl
Tom Davila



MS PROPERTY PARTNERS
Dafna Milstein
Gregg Silver



LA LUXE GROUP
Jeff Yarbrough

TOP TEAMS OF 2016



GOLD TEAM
Vlad Gold
Nataliya Tunhusova



BELLET GRAKAL GROUP
Ben Bellet
Zack Grakal



KAPTAIN/KAPTAIN
Jeff Kaptain
Dave Kaptain

TOP COMMERCIAL AGENT



VICTOR AHN

TOP EXPANSION TEAMS



THE BATSALKIN GROUP
Danny Batsalkin
Elena Batsalkin



KASE REAL ESTATE
Keven Stirdivant

KW BEVERLY HILLS
CONGRATULATES THE TOP AGENTS OF 2016



MICHAEL EISENBERG



LEE ZIFF



MARC ROBINSON



GREG MOORE



SHAWN KORMONDY



SARA SOLEIMANY



JJ WALLACK



KATHRYN SHAFER



SPENCER PAYSON



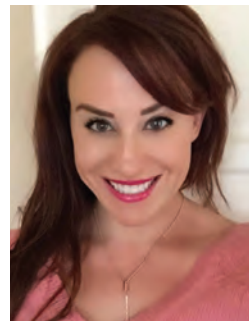
JOHN WOODWARD



CATHY KAMRAN



RORY BARISH



JENNIFER MULBERG



ROBERT HOWELL



CLAUDIA FLORES



HUGH GEHRKE



MICHAEL CARTER



ASHLEY ROGERS



JASON YASELLI



BETE AGONAFER

WELCOME HOME JEEB O'REILLY *Team*

”
We're thrilled to welcome Jeeb and the team back and we look forward to supporting her continued growth here at Douglas Elliman.

- Stephen Kotler
President of Brokerage,
Western Region



“Jeeb’s extensive experience in ultra-luxury real estate makes her a legend in our marketplace. It’s great to have her and the team back.”

- Colin Keenan, Senior Vice President & Managing Broker.

FIND

YOU SEE AN OPEN LAYOUT

YOUR

WE SEE A PLACE TO

PERFECT

BREATHE IT IN

E C T

bhscalifornia.com



**BERKSHIRE
HATHAWAY**
HomeServices
California Properties

Berkshire Hathaway HomeServices California Properties is committed to pursuing your dream home. By focusing on what matters most to you, we find homes carefully tailored to fit your today and tomorrow.

#FindYourPerfect

The best of the best working for you

Top 200 (#180) Mortgage Originators
in America 2015*

Sam Batayneh

SVP of Mortgage Lending

O: (310) 806-4621

C: (310) 770-5539

SamB@rate.com



I understand what it takes to keep all parties informed and provide a smooth mortgage process from pre-approval to closing.

- I specialize in Jumbo loans.
- I have full knowledge of the financial markets in relation to mortgage financing.

- I'm dedicated to recognizing your client's individual needs.
- I have the ability to structure and explain complex loans in an easy and clear way.

CONTACT ME TODAY, LET'S GET TO WORK!

Meet my team



Heather Christensen

Sales Assistant

(424) 325-0072

heather.christensen@rate.com



Tyler von der Lieth

Sales Assistant

(424) 325-0071

tyler.vonderlieth@rate.com



Dawn Huml

Sales Assistant

(424) 325-0083

dawn.huml@rate.com



Lori Nugen

Sales Assistant

(310) 806-4619

lori.nugen@rate.com

CHAIRMAN'S  CIRCLE

12121 Wilshire Blvd, Ste 350
Los Angeles, CA 90025