

THERE ARE PIECES WHICH FURNISH A HOME
AND THOSE WHICH DEFINE IT...



310.556.0418 INQUIRIES@DRESSEDDESIGN.COM WWW.DRESSEDDESIGN.COM

DRESSED
INC. 

CALL OUR OFFICE
FOR A COMPLIMENTARY
DESIGN CONSULTATION
BETH ANN SHEPHERD, PRESIDENT





STAGING AND INTERIORS • RESIDENTIAL • COMMERCIAL • LUXURY FURNITURE LEASES
WEST AND EAST COAST • 310 204 5353 • www.meridithbaer.com



MERIDITH BAER HOME



Loans are a Puzzle

You need experts to help you fit the right pieces together.

- Work directly with you and your client
- Stellar support staff, always keeping buyers informed and engaged in every transaction
- No deal is too small or too big
- A true partner you can count on for all your escrows

Let us put all the pieces together on your next sale.



*Experienced.
Reliable.
On Time.*

**Prospect Mortgage proudly presents
Your mortgage experts in the Los Angeles area**

Follow us on social media:



Mike Hartunian

*Vice President
NMLS# 247330*

Direct: (818) 728-3702
mike.hartunian@prospectmtg.com
www.mikehartunian.com



Joe Parisi

*Vice President
NMLS# 255572*

Direct: (818) 728-3703
joe.parisi@prospectmtg.com
www.josephparisi.com





DEALBREAKERS.

Mark Cohen, Broker
BRE#: 1016103 - NMLS#: 37230
markcohen@cohenfinancialgroup.com

Seth Cohen, Broker
BRE#: 01935101 - NMLS#: 982573
seth@cohenfinancialgroup.com

We are the industry's top mortgage professionals getting more complex deals done than anyone else.

Custom-Fit Solutions

A unique and personalized approach to every situation including **self-employed**, **high-net-worth**, and **foreign borrowers**.

Relationship-Based Client Experience

The highest reputation in the industry with excellent rapport with Sellers' Agents.

Quick Closures

Direct channel to banks' executives for quicker approvals and unmatched professional expertise to get deals done.

Transparency & Communication Throughout The Entire Process

Consistent execution on all loans with no surprises.

\$10 Billion

LOANS FUNDED

18,000

LOANS CLOSED

30+

YEARS EXPERIENCE



Sasan Abrams
sabrams@cohenfinancialgroup.com
BRE 01959640 - NMLS 1194434
Originator Specializing in Multi-Family & New Development

 **COHEN**
financial group
cohenfinancialgroup.com



P 310.777.5401 F 310.777.5410

*By dollar volume in 2014, Scotsman Guide, April 2015.

©2016 Cohen Financial Group, a division of CS Financial, Inc. All rights reserved. Not all applicants will qualify. CS Financial, Inc. is a real estate broker licensed by the CA Bureau of Real Estate, lic# 01257559, NMLS# 31132. Equal housing lender.



"My experience was the best I could imagine it being."
The West Family, Laguna Niguel, CA

**30 DAYS
OR LESS**
AVERAGE
CLOSE TIME

WE HAVE MORE WAYS TO SAY YES!

BANC HOME LOANS, a division of Banc of California N.A., (NYSE: BANC) has provided home loans to borrowers throughout California and across the West since 1941. We combine the speed and agility of a decentralized mortgage lender, with the expertise and resources of a tier-one bank—and our complete selection of portfolio lending products offer **More Ways To Say YES!** to your buyers.

FLEXIBLE PORTFOLIO LENDING

- Non-QM Experts
- Alternative Documentation
 - 1-Year Tax Return
 - 12-Months Bank Statements
 - Asset Depletion
- Expanded Criteria (Second Chance) Programs:
 - FICOs to 620*
- I/O Options Available on Most Programs

*on exception only

CONVENTIONAL LENDING

- Conventional Conforming ("Agency")
- Agency High Balance
- Jumbo/Non-conforming
- Jumbo Conduits
- FHA, VA, CalHFA, USDA
- Renovation Lending: 203(k), HomeStyle®, Construction Lending
- Home Equity Line of Credit (HELOC)
- Reverse Mortgages
- Niche Products



We asked over 2,500 Banc Home Loans clients to provide their feedback and the results are unanimously positive:

91%

give us the Service Rating of **Excellent***

96%

indicated they **"would refer or recommend us to friends or family"****

888.267.5372 | banchomeloans.com/branch/beverly-hills

*Third-party survey representing 2,542 client responses over a 365-day period, April 2014 to April 2015.
©2015 Banc of California, National Association, dba Banc Home Loans. All rights reserved. Not all applicants will qualify. Some products offered by Banc Home Loans include modified documentation requirements and may have a higher interest rate, more points or more fees than other products requiring documentation. Minimum FICO, reserve, and other requirements apply. Contact your Loan Officer for additional program guidelines, restrictions, and eligibility requirements. Rates, points, APR's and programs are subject to change at any time until locked-in. NMLS #530611 EQUAL OPPORTUNITY LENDER | MEMBER FDIC



AS SEEN IN THE **WALL STREET JOURNAL**

No Tax Return Loans*

310-859-0488

Foreign National Loans
From \$500K to \$25 million.

2.740%

2.888% APR

3/1 Adjustable Rate Mortgage
\$500,000 - \$4,500,000 • 60% LTV
1st Lien Loans

Self Employed & Real Estate Investor
1031 Exchange OK

3.625%

3.781% APR

5/1 Adjustable Rate Mortgage
\$500,000 - \$4,500,000 • 60% LTV
1st Lien Loans

Sampling of rates as of February 3, 2016

Irrevocable Trust, Blind Trust, & LLC Vesting OK. Purchase or Refinance. Business Funds Allowed.

CHRIS FURIE

BRE 01004991 | NMLS 357449
chris@insigniamortgage.com

#6

NATIONALLY RANKED
MORTGAGE BROKER
PER SCOTSMAN GUIDE



insignia
MORTGAGE

DAMON GERMANIDES

BRE 01794261 | NMLS 317894
damon@insigniamortgage.com

#32

NATIONALLY RANKED
MORTGAGE BROKER
PER SCOTSMAN GUIDE

9595 Wilshire Blvd., #205, Beverly Hills, CA 90212 | www.insigniamortgage.com

©2015 Insignia Mortgage, Inc. *(1) These products require other forms of income documentation and asset verification in lieu of tax returns. Not all applicants will qualify. Some products we offer may have a higher interest rate, more points or more fees than other products requiring documentation. Minimum FICO, reserve, and other requirements apply. Contact your loan officer for additional program guidelines, restrictions, and eligibility requirements. Rates, points, APRs and programs are subject to change without notice. Loan to values (LTV) are based on appraised value. Actual closing times will vary based on borrower qualifications and loan terms. Insignia Mortgage, Inc., is a real estate broker licensed by the CA Bureau of Real Estate, BRE #01969620, NMLS #1277691. (2) With an interest-only mortgage payment, you will not pay down the loan's principal balance during the interest-only period. Once the interest-only period ends, your payments will increase to pay back the principal and interest. Rates are subject to increase over the life of the loan. Contact your Insignia Mortgage, Inc. loan officer to determine what your payments might be once the interest-only period ends. (3) Loan to Cost (LTC) is defined as the acquisition price of the property plus the cost to build as determined by a bank appraisal. Loan to values (LTV) are values based on a bank appraisal.



Experience a new level of excellence in luxury real estate. Discover RE/MAX



Santa Monica

Venice

West LA/Westwood

Marina del Rey

Abbot Kinney

Beverly Hills

El Segundo

Manhattan Beach

Downtown
Manhattan Beach

Hermosa Beach

Malaga Cove

Redondo Beach

Torrance

Rolling Hills Estates

Rancho Palos Verdes

San Pedro

www.RealEstateLosAngeles.com

We Are Proud to Welcome
Reid Kaplan
to our West LA / Westwood Office



Reid Kaplan
310.883.8921
kaplanrc@hotmail.com



Experience a new level of excellence in luxury real estate. Discover RE/MAX



Santa Monica

Venice

West LA/Westwood

Marina del Rey

Abbot Kinney

Beverly Hills

El Segundo

Manhattan Beach

Downtown
Manhattan Beach

Hermosa Beach

Malaga Cove

Redondo Beach

Torrance

Rolling Hills Estates

Rancho Palos Verdes

San Pedro

www.RealEstateLosAngeles.com

We Are Proud to Welcome
Nicole Orchard
 to our West LA / Westwood Office



Nicole Orchard
424.241.3376
NicoleMOrchard@gmail.com

NOBODY
DOES LOCAL
LIKE WE DO.



Jimmy Green | NMLS# 261045
(310) 562 - 9936



Simon Atik | NMLS# 961014
(310) 434-1735



Jud Whyte | NMLS# 261214
(310) 656 - 8243



Jeremy Altervain | NMLS# 261164
(310) 656-8223



Lance Kinhead | NMLS# 260499
(310) 656 - 8235



Bruce Nangle | NMLS# 267122
(818) 528-3033

LOCAL LENDING • LOCAL DECISIONS • LOCAL PEOPLE

**JOIN
OUR
TEAM!**

CONTACT US FOR
INFORMATION ABOUT
OPENINGS FOR LOAN
ORIGINATORS
800.957.0010

At First Capital, our loan officers live and work in the communities we serve. They work hand in hand with your real estate agent to ensure that you are making the best choices for your financial goals.

FC | First Capital
A Mortgage Company

800.957.0010
FirstCapitalmtg.com





Love to help make things happen?

High-end, fast-growing multi-branch Westside real estate firm could be searching for you! We have full-time positions for two energetic, highly responsible, tech-savvy licensed real estate assistants.

Could one of them be you?

Email your resume to:
letsconnect2016@gmail.com

WINTRUST
MORTGAGE

YOUR LENDING TEAM ON THE WESTSIDE!

We have more options to give your clients control over their finances. Call us today to see how we can work for you!



Anet Moradkhanian
Senior Mortgage Consultant
NMLS# 379942
Direct: 310.941.8250
Fax: 855.780.0352
AMoradkhanian@WintrustMortgage.com
www.WintrustMortgage.com



Dana Dukelow
Senior Loan Officer
NMLS# 252986
Direct: 323.394.1909
eFax: 866.261.6655
DDukelow@WintrustMortgage.com
www.DanaDukelow.com



Doug Burton
Branch Manager
NMLS# 251062
Direct: 323.828.3684
Fax: 310.943.2498
DBurton@WintrustMortgage.com
www.BurtonLoans.com



V. Amayakyan
Loan Originator
NMLS# 675017
Direct: 310.989.5522
Fax: 310.602.6355
VAmayakyan@WintrustMortgage.com
www.VAmayakyan.com



Nancy Everett
Senior Loan Officer
NMLS# 374442
Direct: 818.424.5626 (LOAN)
Fax: 310.861.1415
NEverett@WintrustMortgage.com
www.NancyEverett.com



Joel Newton
Senior Mortgage Consultant
NMLS# 278586
Cell: 310.663.8200
eFax: 855.900.2410
JNewton@WintrustMortgage.com
www.WintrustMortgage.com



Bonnie Rejai
Senior Mortgage Consultant
NMLS# 972094
Direct: 310.676.6666
Fax: 844.832.8123
BRejai@WintrustMortgage.com
www.HomeLoanLA.com

**We're here for all of your needs,
in Los Angeles, and across the
nation. Don't forget that we can
lend in all 50 states!**

High-touch customer service
Quick turn times and funding
A dedicated support team
Jumbo pricing
Variety of ARM loan pricing

WWW.WINTRUSTMORTGAGE.COM



All approvals are subject to underwriting guidelines. Programs, rates, terms, and conditions are subject to change at any time. Wintrust Mortgage is a division of Barrington Bank & Trust Company, N.A., a Wintrust Community Bank NMLS# 449042 © 2016 Wintrust Mortgage. 160100218KO



MY HOME AS ART.



deasy/penner & partners
proudly welcomes our new partners
Juan Longfellow & Louise Leach

To learn more about **deasy/penner & partners**
Contact Stephen Parisi, Associate Manager
310.275.1000 :: deasypenner.com

Santa Monica
Hancock Park
Pasadena
Venice



Effective Online Marketing Strategies and Campaigns



Real Estate Best Practices for 2016



Tech to Win More Business and Make Your Life Easier



Where? When?

The MLS Technology Summit

Thursday, March 31st

Skirball Cultural Center

2701 N. Sepulveda Blvd.
Los Angeles, CA 90049

Tickets:

Early Bird Realtor: \$99*

Early Bird MLO: \$109*

*Parking, lunch, and beverages included!

For tickets and more information, go to...

summit.themls.com

Or Call The MLS™ Help Desk: (310) 358-1833



CONGRATULATIONS DAVE OSMAN

Frank Symons, Executive Vice President/Chief Operating Officer of the Western Region for Sotheby's International Realty, is very pleased to recognize and congratulate Dave Osman in his new position as Vice President and Santa Barbara Region Brokerage Manager.

Congratulations.

DAVE OSMAN

Vice President
Santa Barbara Region Brokerage Manager
CalBRE: 0636086
310.279.9811
dave.osman@sothebyshomes.com

MONTECITO - COAST VILLAGE ROAD BROKERAGE
1106 Coast Village Rd | Montecito, CA 93108
805.969.9993

MONTECITO - UPPER VILLAGE ROAD BROKERAGE
1482, 1470 East Valley Rd | Montecito, CA 93108
805.969.5005

SANTA BARBARA BROKERAGE
1436 State Street | Santa Barbara, CA 93101
805.963.1391

SANTA YNEZ VALLEY BROKERAGE
2900 Nojoqui Ave | Los Olivos, CA 93441
805.688.4200

sothebyshomes.com/santabarbara

Dave's real estate career encompasses 41 years of sales and management as a licensed real estate professional. During that time, he has personally overseen more than 18,000 transactions, valued at over 12 billion dollars. In 36 years managing real estate offices, he has collectively managed offices with more than 2,000 agents affiliated with major companies in Beverly Hills, Brentwood, Santa Monica, Pacific Palisades, Malibu and Santa Barbara.

RECOGNITION

In our fast-paced world of constant communication, it is sometimes important to stop and take a moment to celebrate our successes. This is one of those times.

Joseph Cilic, Senior Vice President and Brokerage Manager, is very pleased to recognize and congratulate these agents for their outstanding performance in 2015. Their success was phenomenal and we look forward to its continuation.

Congratulations.



Simon Beardmore
simon.beardmore@sothebyshomes.com
310.892.6454



Gregory Bega
gregory.bega@sothebyshomes.com
213.453.2020



Michael Hiatt
michael.hiatt@sothebyshomes.com
310.613.4455



Tab Howard
thomas.howard@sothebyshomes.com
310.346.3500



Lisa Mansfield
lisa.mansfield@sothebyshomes.com
310.993.2303



Steven Moritz
steve.moritz@sothebyshomes.com
310.871.3636



Silvia Obagi
silvia.obagi@sothebyshomes.com
310.922.2601



Shamon Shamonki
shamon.shamonki@sothebyshomes.com
310.713.4492

Brentwood Brokerage

Visit **onlywithus.com** to discover the benefits available through us alone.

Barbara Boyle

barbara.boyle@sothebyshomes.com
310.255.5403



Amy Alcini

amy.alcini@sothebyshomes.com
310.266.7929



Lee Johnson

lee.johnson@sothebyshomes.com
310.892.2244



Paula Ross Jones

paula.rossjones@sothebyshomes.com
310.880.9750



Susan Montgomery

susan.montgomery@sothebyshomes.com
310.255.5441



Robert Radcliffe

robert.radcliffe@sothebyshomes.com
310.255.5454



James Respondek

james.respondek@sothebyshomes.com
310.488.4400



Enzo Ricciardelli

enzo.ricciardelli@sothebyshomes.com
310.255.5467



Joan Sather

joan.sather@sothebyshomes.com
310.740.0302



Robin Walpert

robin.walpert@sothebyshomes.com
310.480.4980

Pacific Palisades and Santa Monica Brokerages

Presented by Sotheby's International Realty's

BRENTWOOD BROKERAGE | 11911 San Vicente Boulevard, Los Angeles, CA 90049 | 310.481.6262
PACIFIC PALISADES BROKERAGE | 15308 Sunset Boulevard | Pacific Palisades, CA 90272 | 310.454.0080
SANTA MONICA BROKERAGE | 2216 Main Street, Suite 101 | Santa Monica, CA 90405 | 310.396.5500
sothebyshomes.com

Sotheby's International Realty and the Sotheby's International Realty logo are registered (or unregistered) service marks used with permission. Operated by Sotheby's International Realty, Inc.



Educational Seminars

6330 SAN VICENTE BOULEVARD | SUITE 100 | LOS ANGELES | CALIFORNIA | 90048

USA COLLEGE OF REAL ESTATE AGENT BOOT CAMP TRAINING “ Take Control of the Market ”



Parking Validation
NOT Included

Friday, February 12, 2016
9:30am - 3:00pm (9:00am Check-In)

\$15 Members | \$20 Non-Members

5 Hours of Boot Camp Training Includes:

Capture, Convert and Close FSBOS – Everyday !

P.L.A.N. 2015!

P=rospecting

L=isting

A=ppointment Setting

N=egotiating Contracts

Generating a Great FLASH CMA. - Price Property to Appraise and Close
Learn to Sell Your **TIME**, the key to your success!

Get into “The Business of the Business of Selling Real Estate”

Register online at
www.bhglaar.com



KELLER WILLIAMS REALTY BRENTWOOD
CONGRATULATES BILL STIMMING
ON LISTING
THE BARCLAY HOTEL

Minimum Sales Price: \$40,000,000+

kw BRENTWOOD
KELLERWILLIAMS REALTY

11812 SAN VICENTE BLVD. #100 • LOS ANGELES, CA 90049 Each Office is Independently Owned and Operated

CRISTIAN DAVID | TEAM LEADER

310.826.8200



Educational Seminars

6330 SAN VICENTE BOULEVARD | SUITE 100 | LOS ANGELES | CALIFORNIA | 90048

Beverly Hills/Greater Los Angeles Association of REALTORS® hosts....

How to List and Sell Commercial/Investment Property

1 Day Course

"With Emphasis on working with Buyers"

Thursday, February 11, 2016

9:00am - 5:00pm

Check in begins at 8:30am

Beverly Hills/Greater Los Angeles Association of REALTORS®

6330 San Vicente Blvd., Suite 100, Los Angeles, CA 90048

Reduced Course Cost: \$49 7 CE Credits

PARKING VALIDATION NOT INCLUDED

Register online at: www.bhglaar.com



About Your Instructor

Michael Simpson is a broker and owner of multiple real estate franchises. He was the #3 Commercial agent in Ca and Hawaii, closed over 100 transactions per year for years and the top 1% of all agents in the United States.



YOU WILL LEARN MARKETING STRATEGIES INCLUDING:

- How to put 4 marketing systems into action what will deliver every level of client.
- How to qualify prospects in 3 minutes or less and ONLY work with clients who are ready to do business today
- How to reach eager sellers with MASSIVE portfolios without having a single listing

YOU WILL LEARN THE STEPS:

- How to calculate Cap Rates, Gross Rent Multiplier (G.R.M.'s) & set up sheets
- Terminology and tips for communicating with investors and other C.I. Brokers
- How to calculate Return on Investment (R.O.I.) vacancy, expense factors
- How to analyze and determine value using the income approach
- How to do rent survey and the impact of market rent vs. actual rent on value
- How investors make buying decisions
- How to find investor clients
- And more!

This Course is approved for "7hours" of Continuing Education Credit in Consumer Service.

-CalBRE Sponsor No. 1002

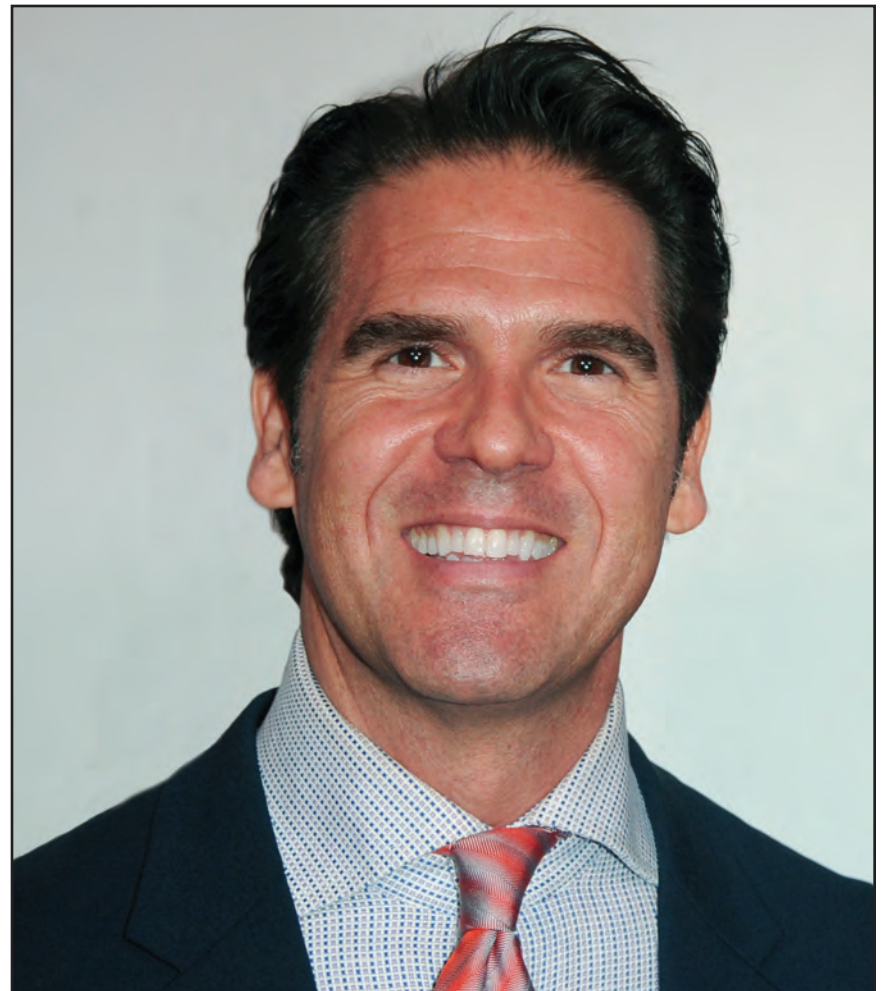
WELCOME ELLIMAN

*Dottie Herman & Howard Lorber
are proud to announce the appointment of*

KEVIN MARK LODIE

Vice President of Marketing

Kevin joins Douglas Elliman as VP of Marketing after 15 years as a consultant leading brand innovation and marketing strategy for startups, global brands and social enterprises. Based in Beverly Hills, Kevin leads all brand marketing for the brokerage's Western Region and plays a key role in collaborating with global marketing on the strategic direction and vision of the Douglas Elliman brand. In 2015, he served as the Chief Strategist of a digital marketplace startup shortly after departing as Chief Marketing Officer at an Entertainment Industry nonprofit. Through his marketing consultancy, he has developed strategies and original platforms for nationally recognized brands including American Express, Meals on Wheels, James Beard Foundation and Giorgio Armani among others. Having grown up living in cities across the country and abroad, Kevin has a lifelong passion for architecture and design. He wrote his thesis on Roman Architecture in Rome and received a B.A. summa cum laude in Literature and Art History from Yale University.



THE GREATEST REAL ESTATE NETWORK

WELCOME TO



MARTINE ZOLLER

Martine Zoller, a native of Beverly Hills with over 17 years of experience in Real Estate, has unparalleled knowledge of the city and its workings, helping clients to find the best aspects of neighborhoods to match their quality of living. Martine's vibrant and gracious professional manner has led to a successful history in negotiating the best deals for her extensive client list including many CEOs, celebrities and entertainment industry executives. Constantly improving the lives of others through her dedication to her work, she believes that every opportunity and person, at any scale, should be treated with respect, kindness and professionalism. We are excited to have Martine join the Douglas Elliman network and welcome all the new possibilities to come.

GROWS STRONGER EVERY DAY

DOUGLAS ELLIMAN

BEN CASPI

Born into a family with deep roots in Real Estate Development, Ben Caspi is the fourth generation to enter the industry. Ben has a unique understanding of the city with living experience in the most sought after neighborhoods and areas including Downtown LA, Hollywood, Santa Monica and the Miracle Mile – a wealth of knowledge that he applies in finding the best opportunities to match his clients' needs. Whether working for a first time buyer or new investment opportunity, Ben goes above and beyond to ensure that a client's experience in the process is one of confidence and strength. By joining Douglas Elliman Ben can further leverage his business, bringing his enthusiasm, network of sophisticated contacts and tireless work ethic to his clients.



Increase Your Visibility

Take Advantage of our Money Saving Packages 

Agent Property Full-Page B&W & Showcase w/Color Photo
\$129 (\$29 SAVINGS)

Agent Property Full-Page Color & Showcase w/Color Photo
\$430 (\$44 SAVINGS)

Agent Property Full-Page Color & Agent Property Full-Page B&W
\$479 (\$55 SAVINGS)




4,500 +

*Magazines
Delivered Weekly*

Call a LIVE Customer Service Representative to find out more!
310-358-1833 or 760-459-8712

We Get Tough Deals Done!



TOOLS THAT WORK

85% cltv to \$2 M.
100% gift allowed for down, reserves and closing



CREATIVE LOAN IDEAS

Alimony not counted as debt




WE OPEN DOORS

apartments/
Commercial Purchases
Refinances

WARD
VER
12
02
2
7



Bureau of Real Estate BRE #01219983 / NMLS #275965

After more than three decades of consistently providing the most innovative, personalized loan solutions available anywhere in the industry, **Gloria Shulman** and her team at CentTek Capital Group are experts at closing transactions under all market conditions.

Regardless of the size and complexity of your purchase or refinance scenario, at CentTek we keep one thing very simple...

"YOUR DEAL MUST GO THROUGH!"

- Close With 1 Year of Tax Returns and Qualifying Bank Statements
- Qualification Based Upon Asset Depletion
- Apartments/SBA Commercial Purchases and Refinances
- Non-Warrantable Condos/First-To-Close Condos



Gloria Shulman
Broker
BRE #00659928
NMLS #313796

9100 WILSHIRE BOULEVARD
SUITE 275 EAST TOWER
BEVERLY HILLS, CA 90212
PHONE: 310-275-3202
Efax: 310-388-0269
gloria@centek.com
WWW.CENTEK.COM



CentTek Capital Group is a broker licensed by the CA Bureau of Real Estate BRE #01219983 / NMLS #275965



BEL AIR

Magnificent, gated & private compound on approx. 1.5 flat acres (2 contiguous parcels), in old Bel Air's most prestigious East Gate location. 9 bedrooms, 16 baths, \$37,500,000

Represented by: Jerry Jolton, Estates Director
T. 310.285.7503 | Jerry@JerryJolton.com



HANCOCK PARK

A prestigious Mediterranean with 7 bedrooms and 7.5 baths. This newly re-imagined 1960-2016 estate boasts expert attention to detail & design. 7 bedrooms, 7.5 baths, \$10,995,000

Represented by: Betsy Malloy/ Brandon Cohan
T. 323.806.0203 | betsy@betsymalloy.com



MALIBU

Located in Serra Retreat, this lushly landscaped architectural home features exceptional amenities. 5 bedrooms, 4+ baths, \$3,995,000

Represented by: Christine Rodgerson
T. 310.617.6699 | crodgerson@coldwellbanker.com



SHERMAN OAKS

Fantastic one-story home done to the nines! Entry way leads to chic living room with hardwood floors, recessed lighting and stone fireplace. 4 bedrooms, 3+ baths, \$1,949,000

Represented by: Steve Frankel
T. 310.281.3981 | homes@stevefrankel.com

Africa North America Central America South America Asia Australia Caribbean Europe Middle East

COLDWELLBANKERPREVIEWS.COM

COLDWELL BANKER PREVIEWS INTERNATIONAL®



©2016 Coldwell Banker Real Estate LLC. All Rights Reserved. Coldwell Banker Real Estate LLC fully supports the principles of the Fair Housing Act and the Equal Opportunity Act. Each Coldwell Banker Residential Brokerage office is owned by a subsidiary of NRT LLC. Coldwell Banker® and the Coldwell Banker Logo, Coldwell Banker Previews International® and the Coldwell Banker Previews International Logo, are registered service marks owned by Coldwell Banker Real Estate LLC. Broker does not guarantee the accuracy of square footage, lot size or other information concerning the condition or features of property provided by seller or obtained from public records or other sources, and the buyer is advised to independently verify the accuracy of that information through personal inspection and with appropriate professionals.

