



STAGING AND INTERIORS • RESIDENTIAL  
COMMERCIAL • LUXURY FURNITURE LEASES  
WEST AND EAST COAST • 310 204 5353  
[www.meridithbaer.com](http://www.meridithbaer.com)

**MERIDITH BAER HOME** 

THERE ARE PIECES WHICH FURNISH A HOME

AND THOSE WHICH DEFINE IT...



HOME STAGING, INTERIOR DESIGN & LUXURY FURNITURE LEASING

310.556.0418 [INQUIRIES@DRESSEDDESIGN.COM](mailto:INQUIRIES@DRESSEDDESIGN.COM) [WWW.DRESSEDDESIGN.COM](http://WWW.DRESSEDDESIGN.COM)

FIVE-STAR CLIENT SERVICES | QUALITY FINISHES & FRESH DESIGNS  
BESPOKE FURNISHINGS & FINE ARTWORK | PERSONAL ASSISTANCE



CALL OUR OFFICE  
FOR A COMPLIMENTARY  
DESIGN CONSULTATION  
BETH ANN SHEPHERD, PRESIDENT





"My experience was the best I could imagine it being."  
The West Family, Laguna Niguel, CA

**30 DAYS  
OR LESS**  
AVERAGE  
CLOSE TIME

# WE HAVE MORE WAYS TO SAY YES!

BANC HOME LOANS, a division of Banc of California N.A., (NYSE: BANC) has provided home loans to borrowers throughout California and across the West since 1941. We combine the speed and agility of a decentralized mortgage lender, with the expertise and resources of a tier-one bank—and our complete selection of portfolio lending products offer **More Ways To Say YES!** to your buyers.

### FLEXIBLE PORTFOLIO LENDING

- Non-QM Experts
- Alternative Documentation
  - 1-Year Tax Return
  - 12-Months Bank Statements
  - Asset Depletion
- Expanded Criteria (Second Chance) Programs:
  - FICOs to 620\*
- I/O Options Available on Most Programs

\*on exception only

### CONVENTIONAL LENDING

- Conventional Conforming ("Agency")
- Agency High Balance
- Jumbo/Non-conforming
- Jumbo Conduits
- FHA, VA, CalHFA, USDA
- Renovation Lending: 203(k), HomeStyle®, Construction Lending
- Home Equity Line of Credit (HELOC)
- Reverse Mortgages
- Niche Products



We asked over 2,500 Banc Home Loans clients to provide their feedback and the results are unanimously positive:

**91%**

give us the Service Rating of **Excellent\***

**96%**

indicated they **"would refer or recommend us to friends or family"**\*\*

888.267.5372 | [banchomeloans.com/branch/beverly-hills](http://banchomeloans.com/branch/beverly-hills)

\*Third-party survey representing 2,542 client responses over a 365-day period, April 2014 to April 2015.

©2015 Banc of California, National Association, dba Banc Home Loans. All rights reserved. Not all applicants will qualify. Some products offered by Banc Home Loans include modified documentation requirements and may have a higher interest rate, more points or more fees than other products requiring documentation. Minimum FICO, reserve, and other requirements apply. Contact your Loan Officer for additional program guidelines, restrictions, and eligibility requirements. Rates, points, APR's and programs are subject to change at any time until locked-in. NMLS #530611 EQUAL OPPORTUNITY LENDER | MEMBER FDIC





# DEALBREAKERS.

**Mark Cohen, Broker**  
BRE#: 1016103 - NMLS#: 37230  
markcohen@cohenfinancialgroup.com

**Seth Cohen, Broker**  
BRE#: 01935101 - NMLS#: 982573  
seth@cohenfinancialgroup.com

We are the industry's top mortgage professionals getting more complex deals done than anyone else.

### Custom-Fit Solutions

A unique and personalized approach to every situation including **self-employed**, **high-net-worth**, and **foreign borrowers**.

### Relationship-Based Client Experience

The highest reputation in the industry with excellent rapport with Sellers' Agents.

### Quick Closures

Direct channel to banks' executives for quicker approvals and unmatched professional expertise to get deals done.

### Transparency & Communication Throughout The Entire Process

Consistent execution on all loans with no surprises.

## \$10 Billion

LOANS FUNDED

## 18,000

LOANS CLOSED

## 30+

YEARS EXPERIENCE



**Sasan Abrams**  
sabrams@cohenfinancialgroup.com  
BRE 01959640 - NMLS 1194434  
Originator Specializing in Multi-Family & New Development

 **COHEN**  
financial group  
cohenfinancialgroup.com



P 310.777.5401 F 310.777.5410

\*By dollar volume in 2014, Scotsman Guide, April 2015.

©2016 Cohen Financial Group, a division of CS Financial, Inc. All rights reserved. Not all applicants will qualify. CS Financial, Inc. is a real estate broker licensed by the CA Bureau of Real Estate, lic# 01257559, NMLS# 31132. Equal housing lender.



## WHEN IT COMES TO NATURAL HAZARD DISCLOSURE, WE'VE GOT YOU COVERED...

At PREMIER NHD, we're dedicated to ensuring you always get the service and attention you deserve. That's why we're pleased to introduce:

### **JOSEPH CORDOVA**

Territory Leader

Email: [Joseph@PremierNHD.com](mailto:Joseph@PremierNHD.com)

Direct: 818.200.3933

Web: [www.PremierNHD.com](http://www.PremierNHD.com)

Contact Joseph on your next transaction.  
Or simply give him a call to say hello.



JOSEPH CORDOVA  
Sales Representative  
San Fernando Valley



**PREMIER**  
NATURAL HAZARD DISCLOSURES

ORDER ONLINE [PremierNHD.com](http://PremierNHD.com)

TOLL FREE 866.643.8110 FAX 866.643.8115

GUARANTEED RATE IS PROUD TO ANNOUNCE:

# Francesco Foggia is a Top 1% Producer in the nation

Source: Mortgage Executive Magazine's 2015 Top 1% Mortgage Originators list



**Francesco's product knowledge is incomparable within the field of mortgage lending.** No matter how complex the transaction is, Francesco goes a step beyond in everything he does while staying on top of emerging trends and providing innovative solutions.

Across decades of experience in real estate, we have been fortunate to work with some of the best in the business. **Francesco is among a select, top-tier group,** and has earned our sincere endorsement."

**Charles L. Black III**

Executive Vice President  
Marketing and Strategic Development  
Hilton & Hyland

## **PARTNER WITH A TOP PRODUCER.**

### **Francesco Foggia**

Vice President of Mortgage Lending

12121 Wilshire Blvd, Ste 350 • Los Angeles, CA 90025

office (424) 354-5094  
cell (310) 922-3363  
ff@guaranteedrate.com  
guaranteedrate.com/FF



*Experience a new level of excellence in luxury real estate. Discover RE/MAX*



Santa Monica

Venice

West LA/Westwood

**Marina Del Rey**

Abbot Kinney

Beverly Hills

El Segundo

Manhattan Beach

Downtown  
Manhattan Beach

Hermosa Beach

Malaga Cove

Redondo Beach

Torrance

Rolling Hills Estates

Rancho Palos Verdes

San Pedro

[www.RealEstateLosAngeles.com](http://www.RealEstateLosAngeles.com)

We Are Proud to Welcome  
**Robin Dahlstrom**  
 to our Marina Del Rey Office



**Robin Dahlstrom**  
**310.890.7622**  
[Robin@Realtor4socal.com](mailto:Robin@Realtor4socal.com)



AS SEEN IN THE **WALL STREET JOURNAL**

# No Tax Return Loans\*

**310-859-0488**

**Foreign National Loans**  
From \$500K to \$25 million.

**2.740%**

**2.888% APR**

3/1 Adjustable Rate Mortgage  
\$500,000 - \$4,500,000 • 60% LTV  
1st Lien Loans

**Self Employed & Real Estate Investor**  
**Recently Retired or Divorced**  
**1031 Exchange OK**

**3.500%**

**3.655% APR**

5/1 Adjustable Rate Mortgage  
\$500,000 - \$4,500,000 • 60% LTV  
1st Lien Loans

Sampling of rates as of February 24, 2016

Irrevocable Trust, Blind Trust, LLC, & Limited Partnership Vesting OK. Purchase or Refinance. Business Funds Allowed.

**CHRIS FURIE**

BRE 01004991 | NMLS 357449  
chris@insigniamortgage.com

**#6** **NATIONALLY RANKED MORTGAGE BROKER PER SCOTSMAN GUIDE**



**insignia**  
MORTGAGE

**DAMON GERMANIDES**

BRE 01794261 | NMLS 317894  
damon@insigniamortgage.com

**#32** **NATIONALLY RANKED MORTGAGE BROKER PER SCOTSMAN GUIDE**

9595 Wilshire Blvd., #205, Beverly Hills, CA 90212 | [www.insigniamortgage.com](http://www.insigniamortgage.com)

©2015 Insignia Mortgage, Inc. \*(1) These products require other forms of income documentation and asset verification in lieu of tax returns. Not all applicants will qualify. Some products we offer may have a higher interest rate, more points or more fees than other products requiring documentation. Minimum FICO, reserve, and other requirements apply. Contact your loan officer for additional program guidelines, restrictions, and eligibility requirements. Rates, points, APRs and programs are subject to change without notice. Loan to values (LTV) are based on bank appraisal. Actual closing times will vary based on borrower qualifications and loan terms. Insignia Mortgage, Inc., is a real estate broker licensed by the CA Bureau of Real Estate, BRE #01969620, NMLS #1277691. (2) With an interest-only mortgage payment, you will not pay down the loan's principal balance during the interest-only period. Once the interest-only period ends, your payments will increase to pay back the principal and interest. Rates are subject to increase over the life of the loan. Contact your Insignia Mortgage, Inc. loan officer to determine what your payments might be once the interest-only period ends. (3) Loan to Cost (LTC) is defined as the acquisition price of the property plus the cost to build as determined by a bank appraisal.

**THE KELLER WILLIAMS LEADERSHIP TEAM**

**CONGRATULATES OUR TOP PRODUCERS ON THEIR OUTSTANDING PERFORMANCE IN 2015 & WISHING YOU CONTINUED SUCCESS IN 2016!**



**Edward Breslin**  
Kentwood Capital Advisors



**Jason Flashman**  
Flashman Investment Group



**Ray Lyon**



**Pete Castro**  
Pete Castro Group



**Eileen Garrison**



**Dan May**



**Suzanne Chai**



**Andrea Gressinger**  
Gressinger Group



**Andre Melikian**  
Woodland Group



**Sara Demsky**



**Janice Hou &  
Scott Price**  
Price + Hou and Associates



**Kelley & Todd Miller**  
Miller Team



**Jo Dresner**



**Nanette Iggulden**



**Kelly Morgan**



**Martin Feinberg**  
The Feinberg Team



**Lulu Knowlton**



**Sherri & Jose Noel**  
The Noel Team



**Kellen Flanigan**



**Jeff Lemen**  
The Cunningham Group



**Toni Patillo**  
Toni Patillo & Associates



EDUCATION TRAINING CONSULTING TECHNOLOGY WEALTH BUILDING



Marc Perlof



Richard Schulman  
Richard Schulman Team



Heidi Prosser Stevens &  
Kenny Stevens  
Prosser Stevens Real Estate Investments



Sabine Pleissner



Neil Spanier  
New Construction Real Estate Group



Michael Toveg  
Stepp Commercial



Jonathan Prakash  
MVP Brokerage



Tanya Starcevich



Regina Vannicola



Zan Sacker &  
Jeff Lovell  
Sacker Lovell



Robert Stepp  
Stepp Commercial



Derrick Vartanian  
MVP Brokerage



Stephen Saltzman



Kimberly R. Stepp  
Stepp Commercial



Scott Walker  
New Construction Real Estate Group



Chris Sands  
Sands Group



**TAMARA ROBINSON**  
Team Leader | Chief Growth Officer  
310.482.2200 | trobinson@kw.com | kwsantamonica.com

2701 OCEAN PARK BLVD., SUITE 140, SANTA MONICA, CA 90405  
EACH OFFICE IS INDEPENDENTLY OWNED AND OPERATED

Boutique Service | Global Reach

**LOOKING TO GROW YOUR BUSINESS AND INCREASE YOUR PRODUCTIVITY?  
CALL TODAY FOR A CONFIDENTIAL MEETING!**



# Educational Seminars

6330 SAN VICENTE BOULEVARD | SUITE 100 | LOS ANGELES | CALIFORNIA | 90048



## Tools for Building your Business

RPR's dynamic data and client-friendly reports help REALTORS® achieve professional success. In this free workshop you will learn to:

- Search hundreds of datasets on more than 160 million on-and-off market properties
- Create custom-branded, client-friendly reports that can be printed, emailed or texted.
- Create the ultimate listing package with RPR's Comp Analysis tool
- Calculate the ROI for your client's home improvement
- Capitalize on listing presentations and open houses using your device.
- Send customized and branded reports... anywhere, anytime



**REGISTER TODAY!**

[www.bhglaar.com](http://www.bhglaar.com)

Join RPR & Beverly Hills/Greater Los Angeles Association of REALTORS®

March 3, 2016

11am–1pm: RPR Basic & Mobile Training

FREE Training for BH/GLAAR Members

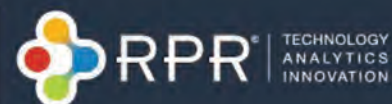
\$10 – Non-Members

**Parking Validation NOT Included**

6330 San Vicente Blvd | Suite 100  
Los Angeles | CA | 90048



NATIONAL  
ASSOCIATION of  
REALTORS®  
Wholly Owned Subsidiary



## GRANITE ESCROW IS PROUD TO ANNOUNCE THE NEWEST ADDITION TO OUR SANTA MONICA BRANCH



**TERI "MARIA" NAMBA**  
SENIOR ESCROW OFFICER  
310.207.0110 | MNAMBA@GRANITEESCROW.COM

MARIA HAS BEEN A CONSTANT IN THE BEACH CITIES REAL ESTATE MARKET FOR THE LAST TWENTY-FIVE YEARS. SHE BRINGS A PASSION AND ENTHUSIASM TO EVERY ESCROW THAT SHE HANDLES AND PRIDES HERSELF ON DELIVERING A LEVEL OF SERVICE THAT IS SECOND TO NONE. MARIA IS AN INCREDIBLE ADDITION TO OUR SANTA MONICA BRANCH AS WELL AS OUR GROWING FAMILY OF ESCROW PROFESSIONALS.

**PLEASE HELP US IN WELCOMING HER TO OUR TEAM!**



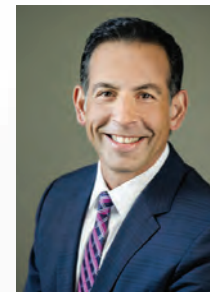
**LORI WEAVER**  
SENIOR ESCROW OFFICER  
BRANCH MANAGER



**CRYSTAL SWIGER**  
ESCROW OFFICER



**ZACK TENNEY**  
SALES EXECUTIVE



**CHRIS MARQUEZ**  
EXECUTIVE VICE PRESIDENT:  
SALES / MARKETING  
LOS ANGELES REGION

### **SANTA MONICA BRANCH OFFICE**

2001 WILSHIRE BLVD, SUITE 325 | SANTA MONICA, CA 90403  
(310) 207-0110 - MAIN LINE

BEVERLY HILLS | CARLSBAD | IRVINE | NEWPORT BEACH | SAN DIEGO  
SANTA MONICA | SHERMAN OAKS | TEMECULA

**WWW.GRANITEESCROW.COM**





**Effective Online Marketing Strategies and Campaigns**



**Real Estate Best Practices for 2016**



**Tech to Win More Business and Make Your Life Easier**



## Where? When?

**The MLS Technology Summit™**

Thursday, March 31st

**Skirball Cultural Center**

2701 N. Sepulveda Blvd.  
Los Angeles, CA 90049

**Tickets:**

**Early Bird Realtor: \$99\***

**Early Bird MLO: \$109\***

\*Parking, lunch, and beverages included!

For tickets and more information, go to...

**[summit.themls.com](http://summit.themls.com)**

Or Call The MLS™ Help Desk: (310) 358-1833



**MORTGAGE  
CAPITAL  
PARTNERS**

*Mortgage Capital Partners  
proudly welcomes*

**Sue Silverman**

CHIEF EXECUTIVE OFFICER

"We are extremely excited to announce the arrival of Sue Silverman as our Chief Executive Officer. With over 25 years of mortgage industry experience, Sue brings an enormous wealth of talent and knowledge to Mortgage Capital Partners. Adding Sue's talents to our firm is just another step we are taking to maintain premiere service and product offerings to all of our clients.

- Mitchell Reiner, Managing Director

## Sue Silverman

CHIEF EXECUTIVE OFFICER  
mortgagecapitalpartners.com

**Direct: 310.295.6250**

Email: [ssilverman@mortgcap.com](mailto:ssilverman@mortgcap.com)

### CORPORATE OFFICE:

12400 Wilshire Blvd., Suite 900  
Los Angeles, CA 90025

## BRANCH OFFICES

### Newport Beach

1200 Newport Center Dr., Ste. 185  
Newport Beach, CA 92660

### Calabasas

23564 Calabasas Rd., Ste. 201 W  
Calabasas, CA 91302

### Maryland

6220-6222 Montrose Road  
Rockville, MD 20852

### Beverly Hills

9595 Wilshire Blvd., Suite 205  
Beverly Hills, CA 90212

### Westlake Village

5701 Lindero Canyon Rd., Ste. 203  
Westlake, CA 91362

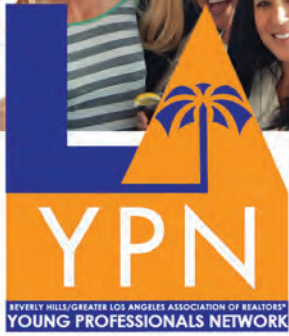
### New Jersey

218 Schanck Road  
Freehold, NJ 07728





Thanks to our Door Prize Sponsors



Please join BH/GLAAR YPN for our monthly Happy Hour Fundraising Network Mixers.

Come and enjoy a drink while networking with

like-minded real estate professionals throughout the Los Angeles area. We will have a sponsored door prize each month.

All monies from door prize ticket sales will benefit the BH/GLAAR Charitable Foundation.

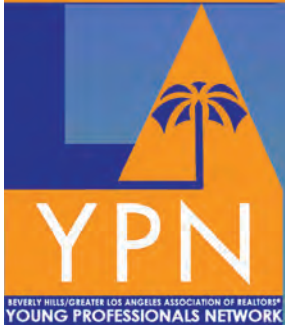
*This year, the BH/GLAAR Charitable Foundation will be joining the City of Los Angeles and the Department of Veterans Affairs to assist with the State of Emergency on Homelessness throughout our region. The Foundation will also support the extraordinary efforts of the Downtown Women's Center and PATH (People Assisting the Homeless), two organizations that have taken a leadership role in addressing Veterans' housing needs. Your support is greatly appreciated.*

Have Questions? call 310.967.8800

**OUR MARCH MIXER: WED., MARCH 2<sup>ND</sup> from 5pm - 7pm**



Good Times at Davey Wayne's  
1611 N. El Centro Ave, Los Angeles, CA 90028



**Socially Awkward** STAND UP COMEDY  
WITH VINNY FASLINE & SPECIAL GUESTS

Please join the Beverly Hills/Greater Los Angeles Association of REALTORS®

Young Professionals Network

Wednesday, April 20<sup>th</sup>

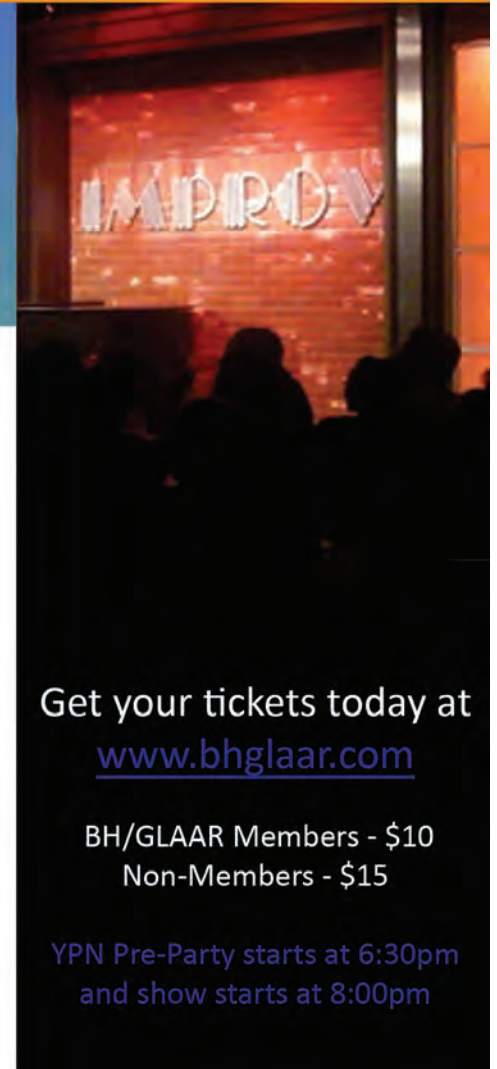
at the

Improv in Hollywood

for

**Socially Awkward**

A night filled with laughs for a great cause. All money from ticket sales & door prize tickets will go directly to Children's Hospital Los Angeles. Space is limited.



Get your tickets today at [www.bhglaar.com](http://www.bhglaar.com)

BH/GLAAR Members - \$10  
Non-Members - \$15

YPN Pre-Party starts at 6:30pm  
and show starts at 8:00pm