



Map Search Overview: New Version

The MLS™ has upgraded its mapping system from Bing Maps V7 to Bing Maps V8. Here is an overview of the new features and tools available within Bing Maps V8.

[NEW Streetside View - p.1](#)

[Enhanced Navigation Tools - p.3](#)

Existing Features

[Road View - p.4](#)

[Aerial View - p.4](#)

[Bird's Eye View* - p.5](#)

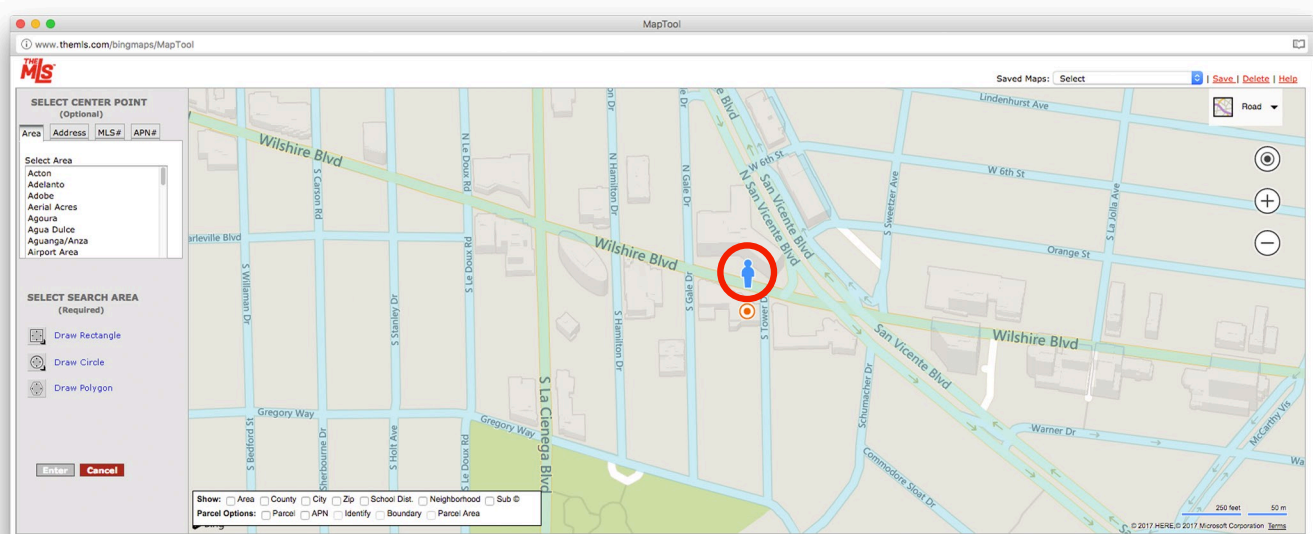
[Shapes - p.6](#)

[Map It - p.8](#)

* The MLS™ has reinstated the Bird's Eye Views for Bing Maps V8 that Microsoft has made available. Microsoft is in the process of updating the Bird's Eye Views in Bing Maps V8 for the areas in which it is not yet available, and The MLS™ mapping system will reflect those updates once available.

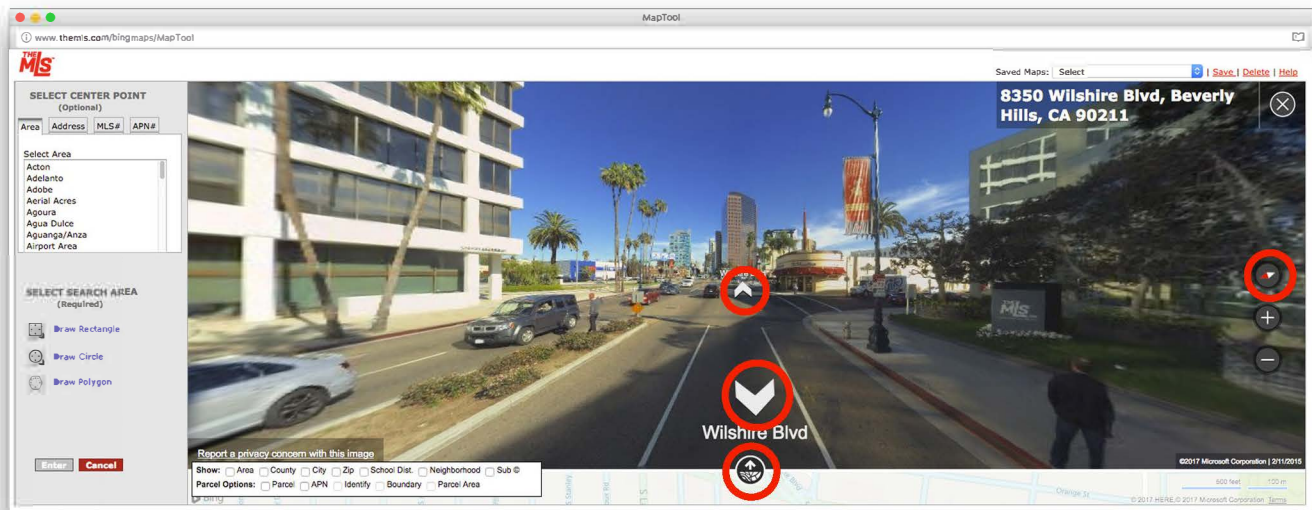
NEW Streetside View

The streetside view allows you to explore a photographic map at the ground level. When you click onto the streetside view from the view type drop-down menu, a blue person icon will appear, which you must place onto the map by left-clicking on your desired location. It's important to note that this icon can only be placed on streets highlighted in blue or green. Once that icon has been placed on the map, you'll be taken to the streetside view.

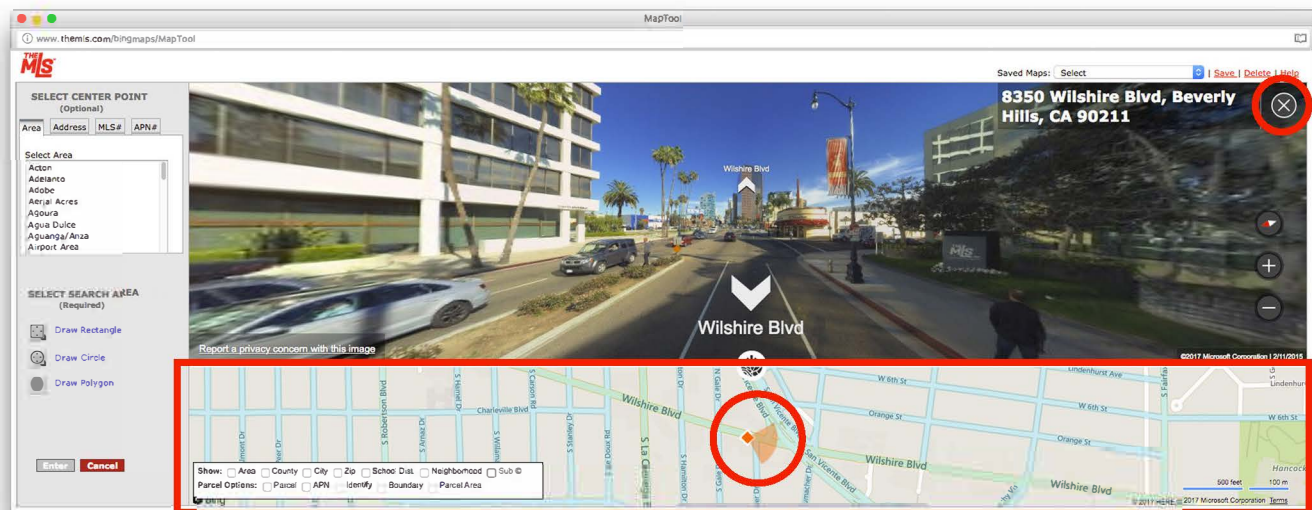


NEW Streetside View (Continued)

There are several features exclusive to the streetside view. First, you'll notice white arrows placed on the roads that allow you to navigate the map in either direction. To the right, you'll see a compass icon. Clicking on the compass icon will direct your perspective northbound. At the bottom, you'll see a circular gray and white icon. This icon will allow you to view your current location and perspective on a road view of the map.

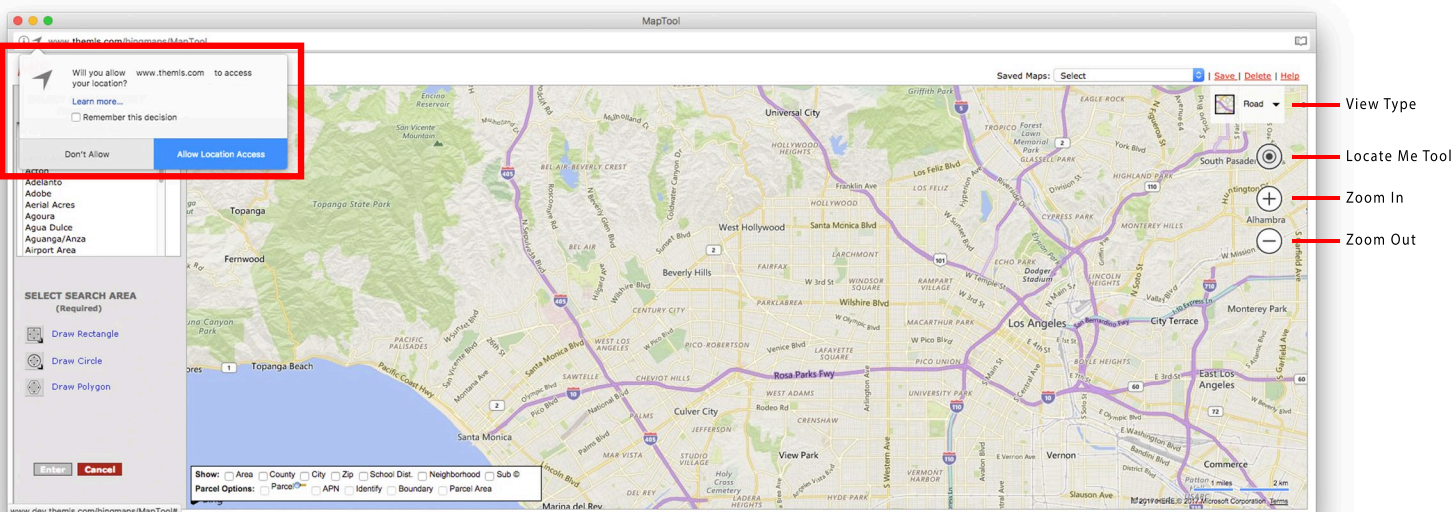


You can click on the gray and white circular icon once again to hide the road map. To exit the streetside view and revert to the previous view type, click on the X icon at the top right.

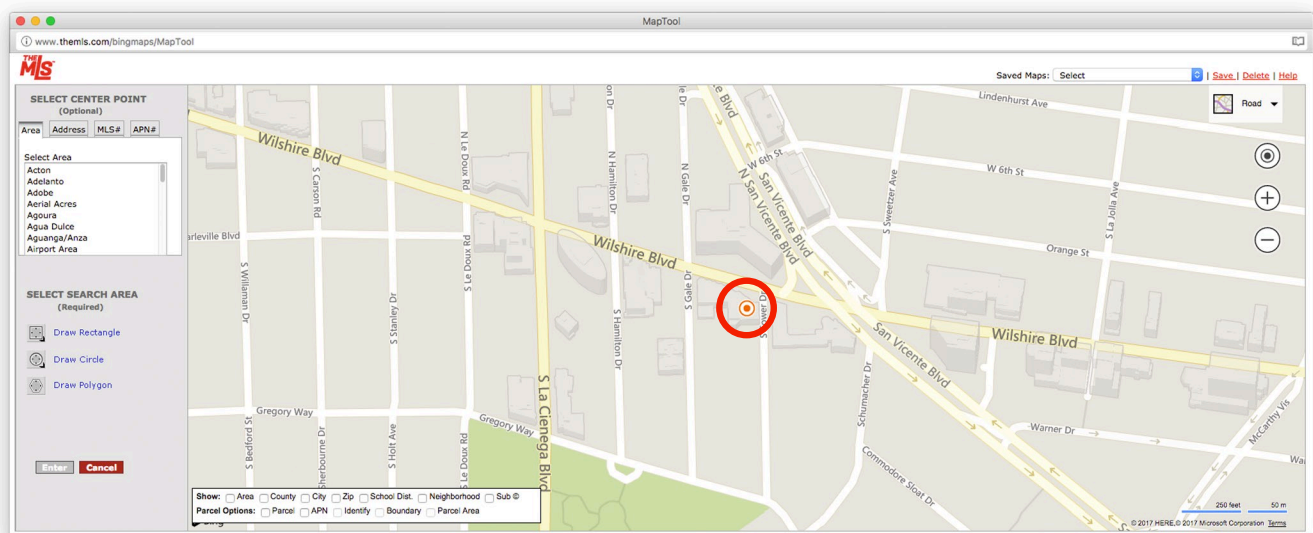


ENHANCED Navigation Tools

The navigation tools have now been moved to the top right corner. The directional arrows have been removed, but you can still easily navigate the map by dragging your cursor. To switch between different view types, click on the arrow at the top right to reveal a drop-down menu. The plus (+) and minus (-) buttons allow you to zoom in and out of the map. Above the plus and minus buttons is a circular target ("Locate Me") button, which allows the map to find your current location. When you click on this "Locate Me" button, your Web browser will ask if you'd like to grant permission to themls.com to access your location. You must click "Allow Location Access" in order to use this feature.

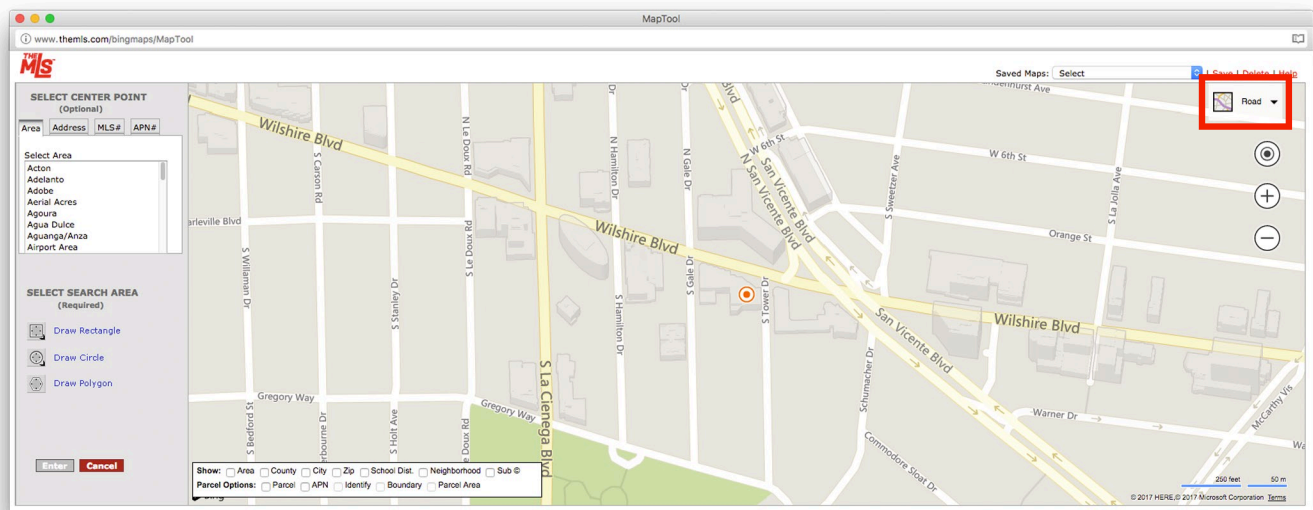


Once you have granted location access to themls.com, the map will navigate to your current location and mark it on the map with an orange target icon.



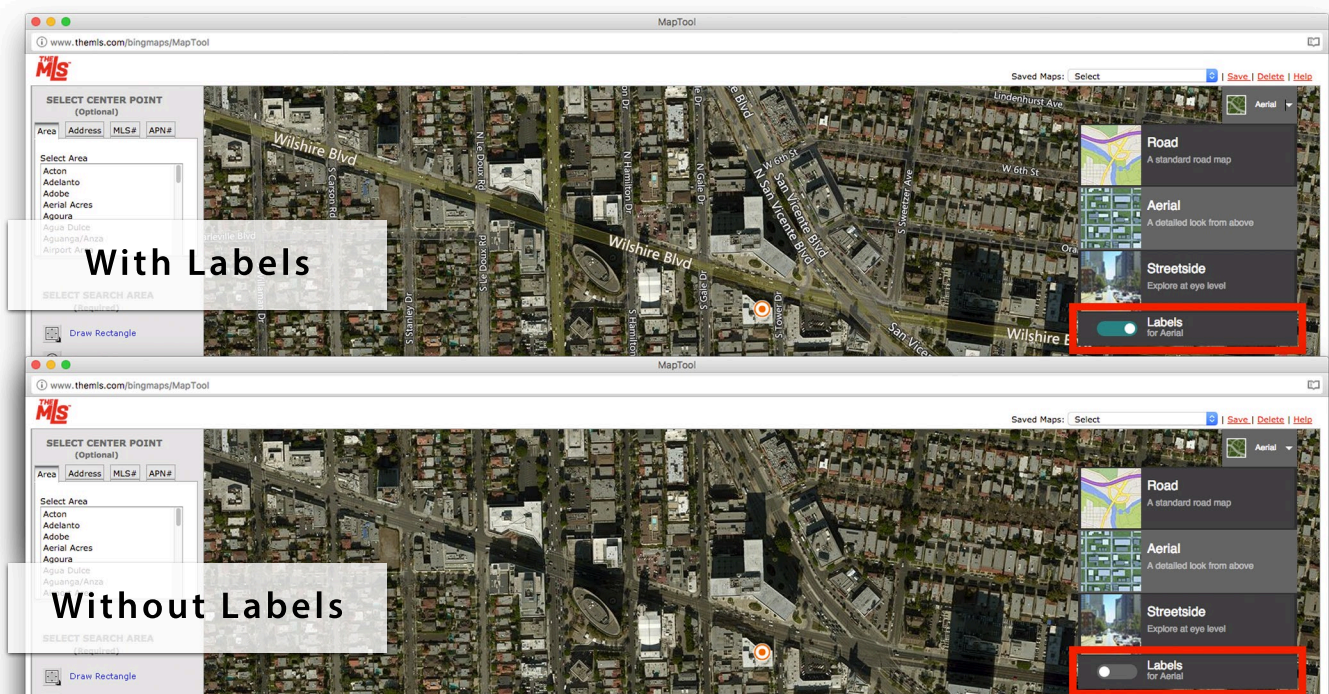
Road View

The road view is a standard, color-coded, top-down perspective road map, with major freeways in purple, major streets in yellow, and minor streets in white.



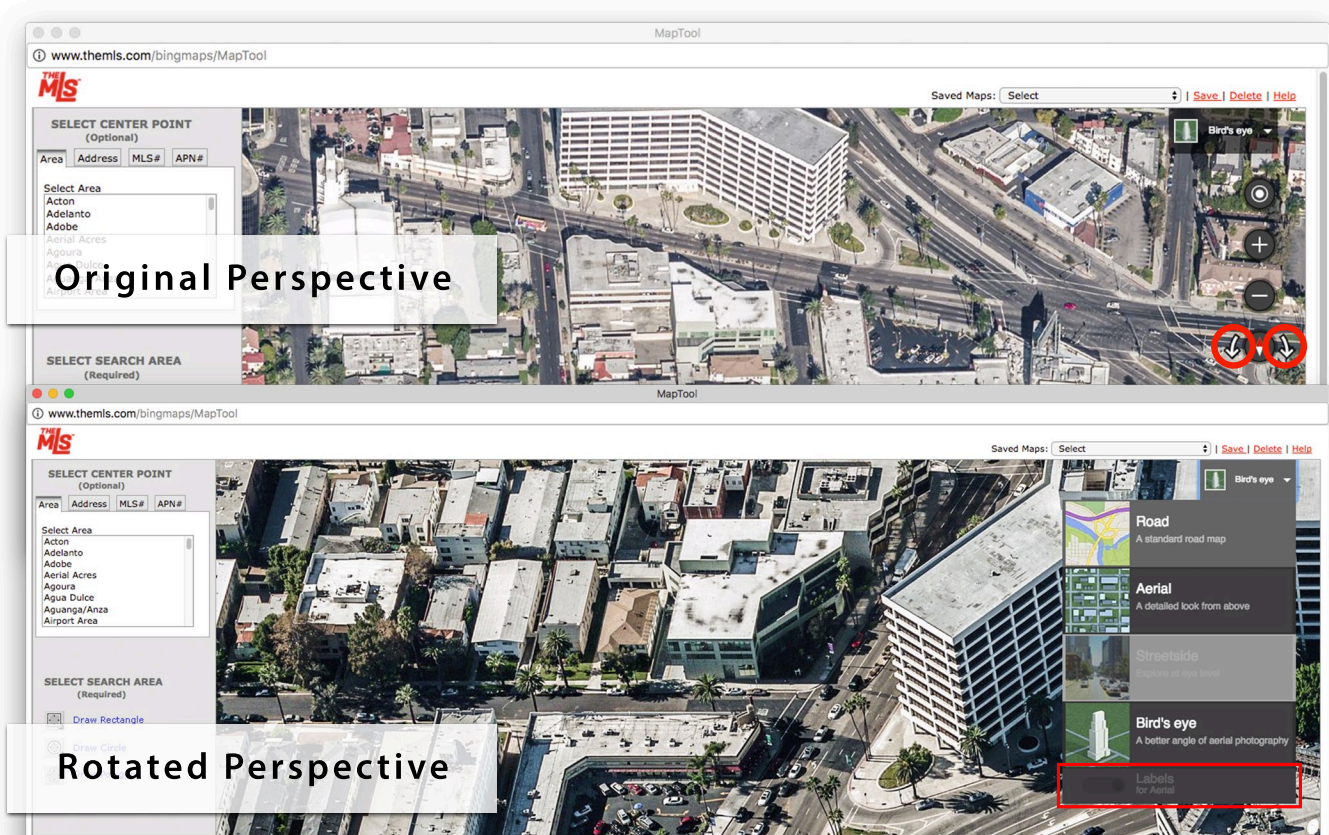
Aerial View

The aerial view is a photographic map that shows a top-down perspective with greater detail. Within this view, you can click on the toggle button at the bottom of the view type drop-down menu to show and hide map labels, such as street names and landmarks.

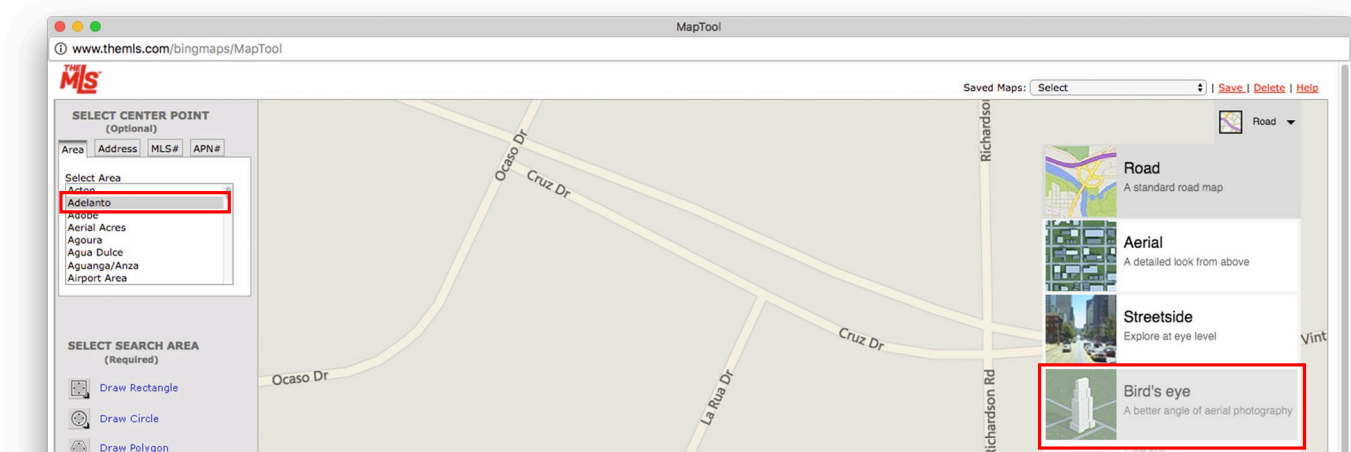


Bird's Eye View

The Bird's Eye View displays a photographic, angled, aerial view. In this mode, you can rotate your perspective by pressing on the curved arrow icons on either side of the compass. *NOTE: Microsoft has not yet enabled the Labels functionality for Bird's Eye View; The MLS™ mapping system will reflect any Microsoft updates once they are available.*

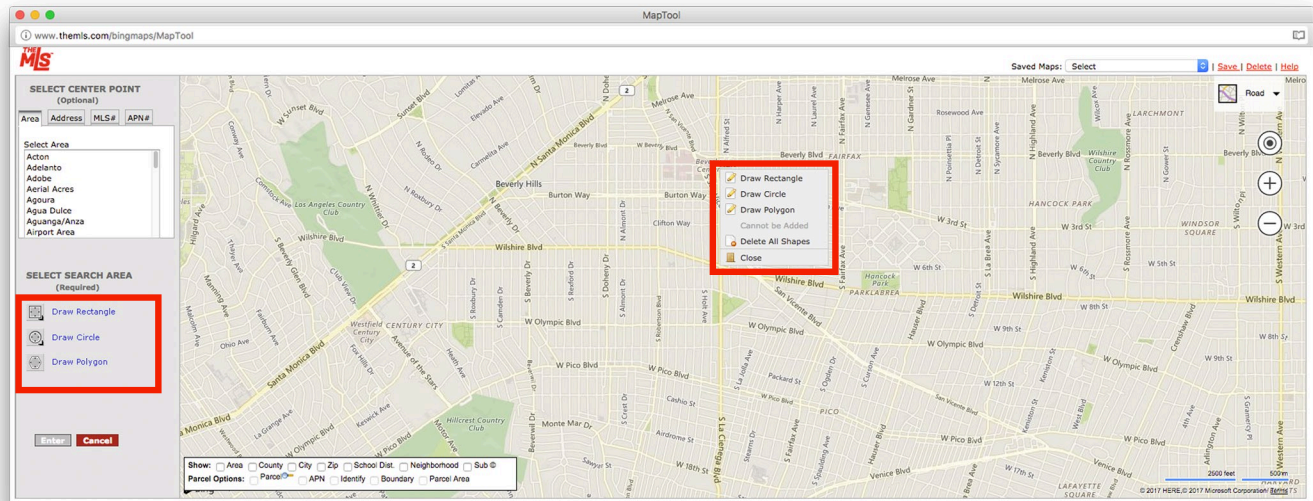


NOTE: Microsoft is currently processing the global imagery for the Bird's Eye View feature. As such, this feature is not yet available in all areas of the map. If you select an area that has not yet accommodated this feature, your map will automatically revert to Road View and the Bird's Eye View menu option will become disabled.

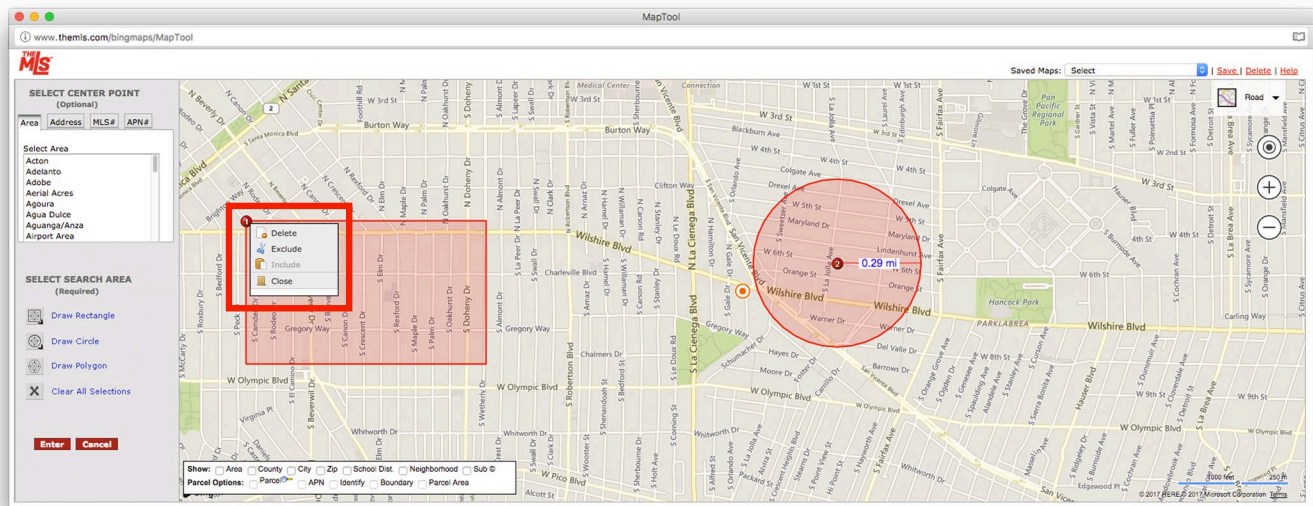


Shapes

You can draw shapes in the road and aerial views. To draw a rectangle or circle, click on the appropriate icons on the left. You can also right click anywhere on the map and choose the shape you'd like to draw. You can also use this method to delete all shapes you may have drawn thus far.

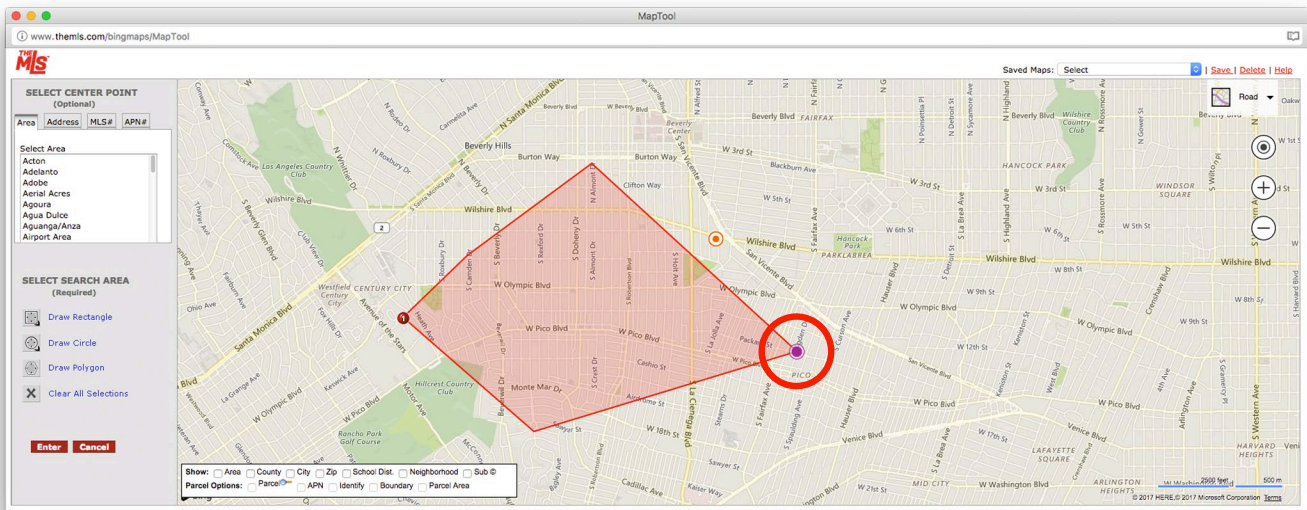


For rectangles and circles, clicking once places your initial point, and clicking a second time closes the shape. You can draw multiple shapes within a single map search and they will be numbered accordingly. If you need to delete an individual shape, left-click on the number assigned to that particular shape and click "delete". You can also use this method to "exclude" an individual shape from your map search.

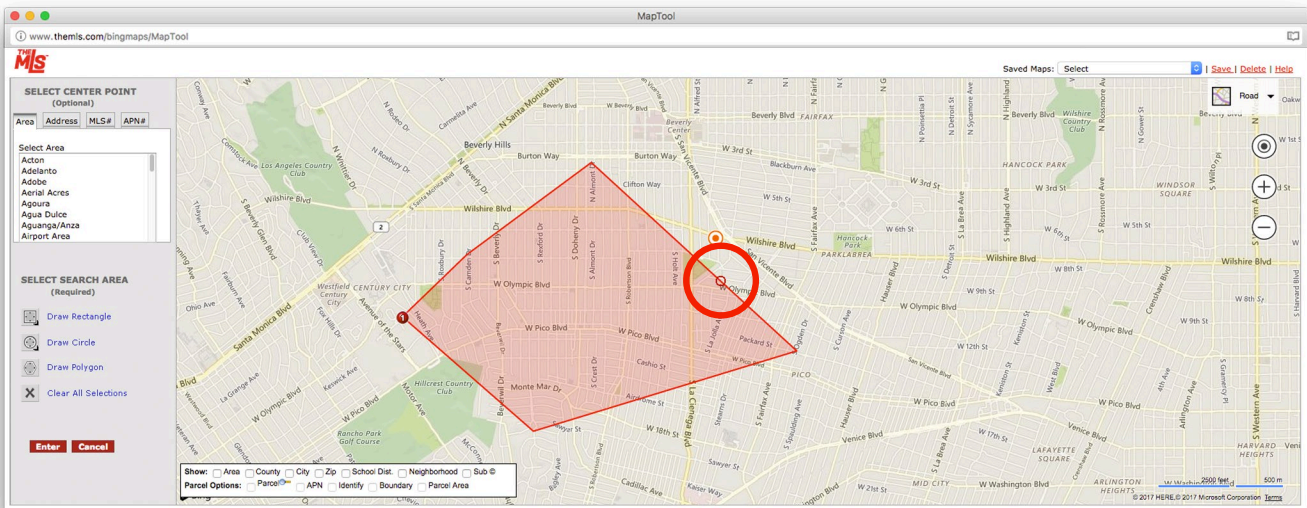


Shapes (Continued)

The polygon drawing tool allows you to build a custom shape with as many points as you'd like. To start the shape, left-click anywhere on the map. You can add points by continuing to left-click around your desired location. To close the shape, you'll need to click on the first point you created once again. To edit an existing point on a closed polygon, hover over one of the points until you see a purple target icon.



To add a new point to a polygon, place your cursor on one of the edges until you see a red circle. Once you see the red circle, you can click and drag that point to your desired position.



Map It

While viewing the search results screen, you can click on “Map It” to view one or more property locations on a map. You can click on each pin on the map to view property information.

The screenshot displays the MLS website interface. The top navigation bar includes links for DIRECTIONS, MAP IT (highlighted with a red box), CLOUD CMA, STATS, and CART. Below the navigation bar, a table lists three property listings. The first listing is for 822 S. MLS TEST LISTING BLVD in Los Angeles, with a price of \$9. The second listing is for 822 Robertson in San Diego, with a price of \$300,000. The third listing is for 2345 GERHART AVE in Monterey Park, with a price of \$399,901. Below the table, a map view shows the location of the first listing, 822 S. MLS TEST LISTING BLVD, with a pin and a photo of the property. The map includes various tools for refining the search area, measuring, and driving directions.

#	Photo	MLS #	AR	S	Address	City	BR	Baths(FTHQ)	SqFt	LP \$/SqFt	LP	SP	Lot Sz	HOD	YB	Pool	DOM	Map	Doc(s)
1		09-361037	19	A	822 S. MLS TEST LISTING BLVD	LOS ANGELES	3	2.00 (0 0 0 0)	1,500	\$0.01	\$9	↑	8,000	\$0	1960	No	2978	999/A1	3
2		15805741C	540	A	822 Robertson	San Diego	3	7.00 (4 1 1 1)	35,000	\$8.57	\$300,000		2,500	\$0	1980	Yes	836	/	
3		22137536IT	400	A	2345 GERHART AVE	Monterey Park	3	2.00 (1 0 1 0)	1,290	\$310.00	\$399,901	↑	5,650	\$0	1946		635/16		

Questions? Call our Help Desk at 310.38.1833
or email us at Marketing@TheMLS.com

