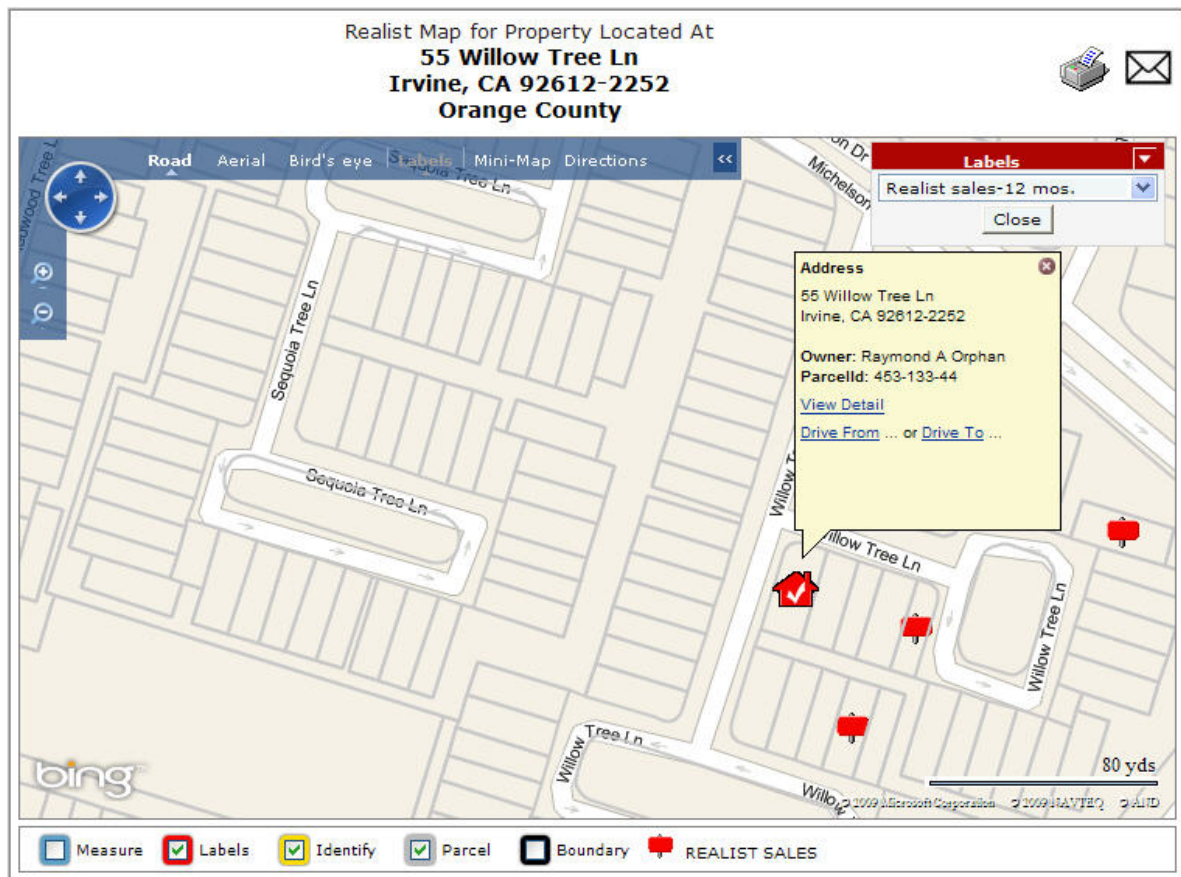


Realist Maps



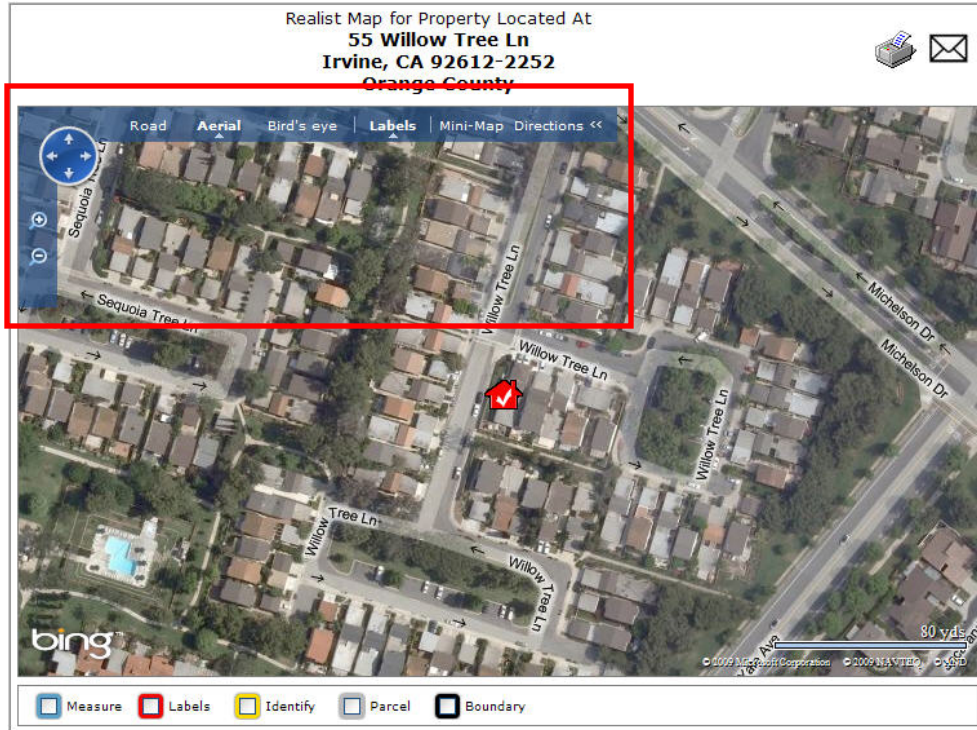
Displaying a Realist Map

A Realist Map can be produced from the *Property Details* page for properties with a complete address. Click the *Realist Map* button and the *Realist Map* screen displays. The subject street address appears centered on the map, and its location is denoted by the red icon of a home.

Certain features of Realist Maps may not be available in your area. Be sure to research the features available for your MLS.

Navigating a Realist Map

Navigational options appear on the upper left hand corner of the map. The map area initially displayed by Realist will default to an area roughly spanning the last county in which a user conducted a search. To manipulate the default map display, use the options described below:

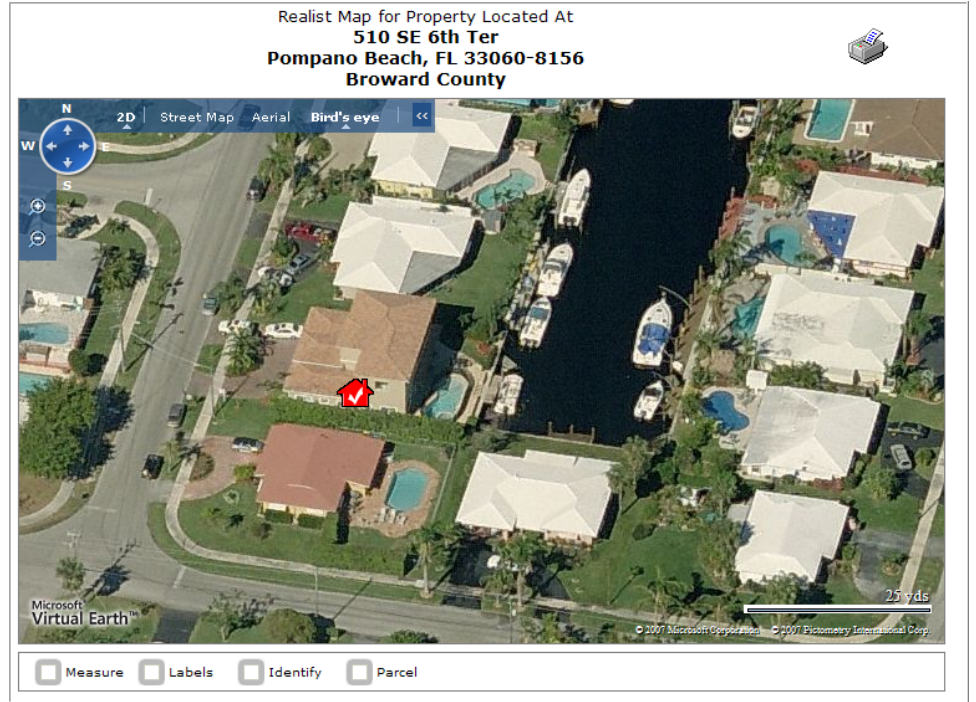


Navigation Controls on Upper Left of Map

Zoom	Click the plus (+) or minus (-) signs to zoom in or out. Alternatively, scroll the wheel of your mouse to zoom in or out.
Pan	Click any point on the compass to pan in any direction. Alternatively, click and drag the map in any direction.
Street Map	Click on Street Map to see a simple street map view.
Aerial	Click on Aerial to see an aerial overlaying a street map.
Birds eye	Click on Birds eye to see an oblique aerial view. Other features will be disabled while in the Birds eye view.
Labels	Click on Labels to remove names of streets, cities and other landmarks
Mini-Map	Click Mini-Map to load an inset map at a higher zoom level on the larger map that will indicate in a shaded area where the detail area is.
Directions	Click Directions to load a separate window that allows you to input "To" and "From" addresses either manually or by using the Identify Feature. Realist will display turn-by-turn directions, time of travel and plot your route on the map.
Minimize	Click the << arrows to minimize the navigation menu. When minimized, click >> to maximize the navigation menu.

Birds Eye Images

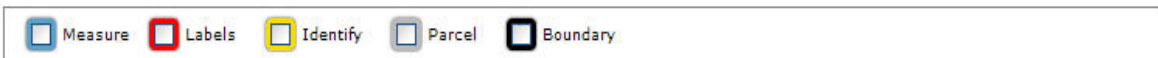
Birds Eye imagery is available for major metropolitan regions across the United States, and Microsoft® continues to add new coverage. These stunning, high resolution scenes display properties at an oblique angle, and provide a unique “birds eye” view of a property. Realist automatically detects when birds eye images are available. When they are not available, the option to open a bird’s eye image is not available. When available, these images offer two zoom levels and up to four views (north, south, east, and west).



Use the plus (+) and (-) sign to toggle between the birds eye zoom levels, and click the N, S, E and W compass points to revolve through the various birds eye views.

Realist Map Tools

Realist Maps provide a selection of tools below the map. These tools are not available while viewing birds eye images, and in general, you must zoom in to a detailed map view to use the map tools. In fact, Realist will remind you when it is necessary to zoom in further before using any a tool.



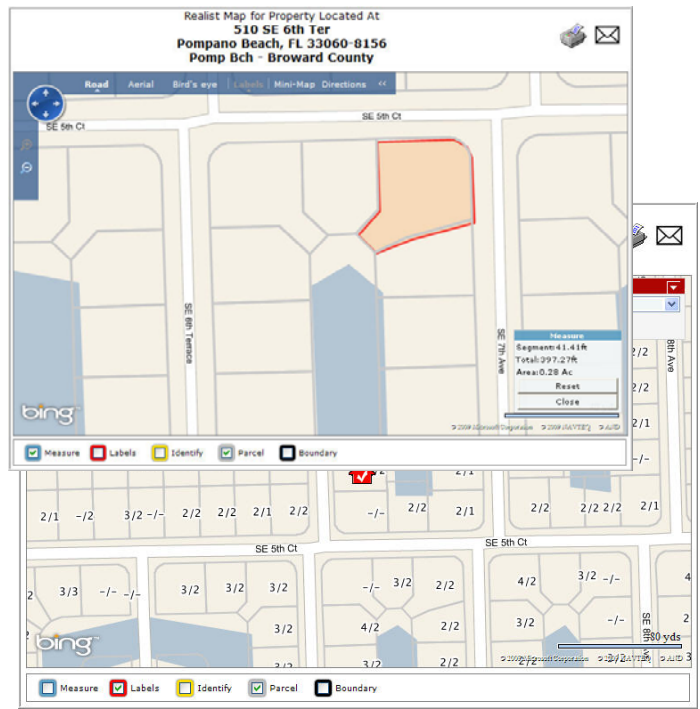
M

Measure

Measure enables you to trace any shape by clicking on the beginning and ending points of each side. Watch as measure collects data in the lower right corner of the map. As you click on each point, measure reports the length of the line, the total length of all lines, and ultimately the interior area of the shape. This tool is excellent for measuring irregular lots or calculating undeveloped land areas.

L

Labels should not be confused with mailing labels. Rather, these labels are



data overlays that you can elect to display on a Realist Map. In the example to the right, each building's area is displayed on the map. Some labels, such as Realist sales and MLS listing statuses, display icons overlaying the map.

The available labels are uniform throughout Realist. However, some data may not be available for select counties or properties.

Some labels only apply to a limited number of properties, such as a label for properties that sold in the past 3 months. In such cases, zoom out to view more surrounding properties.

Identify

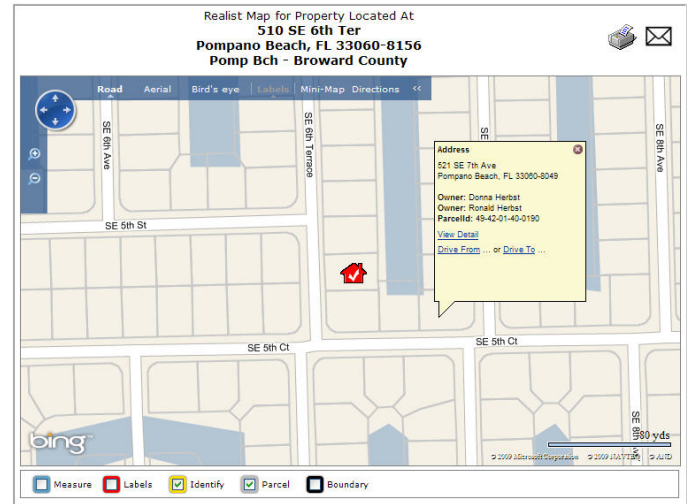
Click the Identify button to enable this feature. It enables you to click any property on the map to overlay thumbnail property information on the map – and then link to the detailed property report!

Parcel

Click the Parcel button to overlay the parcel lot lines on the map

Boundary

Click the Boundary button to overlay boundaries for Zip codes, Cities or Counties



Printing or Emailing a Map

Click the printer or email icons at the top of the page to print or email the the current map image.

Realist Map Search

Lesson Activities

- Find on Map – setting an address or locale as the map's center point
- Finding properties using the polygon, radius and rectangle searches
- Filter properties within the search area
- Find properties

Introducing the Map Search

The Map Search is a visual search tool enabling you to retrieve properties within geographic boundaries you define. It is a popular method to define an area in which to export mailing labels or a list. To use the Map Search:

1. Navigate to -- or Find -- the general area of the map in which you wish to search
2. Draw the polygon, radius, or rectangle within which you wish to search for properties
3. Add filters to narrow down the properties retrieved from the define map area
4. Click *Find Properties*

Notes:

While maps can be displayed for any area in the United States, actual properties searches are limited to the counties to which your organization subscribes.

Find on Map – Setting a City, Zip or Address as your Center Point

The top of each map enables you to enter an address or, if you wish, simply a zip code. Entering a zip code provides a quick alternative to navigating the map and setting your center point.

To quickly move to a specific zip code, simply enter the Zip and click “Find on Map.”

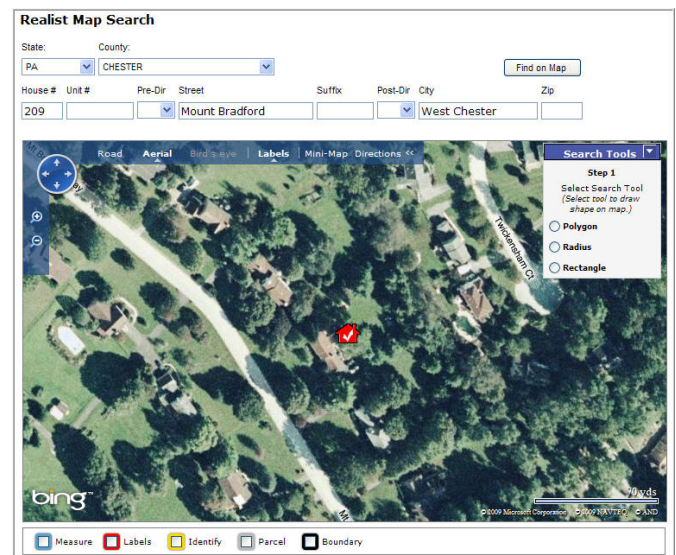
To set a specific address as a center point, enter:

- House Number
- Pre-Directional
- Street Name
- City
- State
- Zip Code

Note:

If you enter the Zip, it is not necessary to enter the City and State. Conversely, if you enter the City and State, the Zip is not necessary.

Unlike the Realist address and street searches, you



can enter the street suffix directly after the street name. For example, a user can enter Woodstock, Woodstock St, or Woodstock Street. The system will find and map the first instance in the database of Woodstock.

“Find on Map” returns the first instance of an address with a directional. For example, if there is an address such as 2510 North Broad Street or 2510 South Broad Street, Find on Map will return 2510 North Broad Street unless the user also enters the correct zip code.

Finding Properties Using the Polygon, Radius and Rectangle Searches

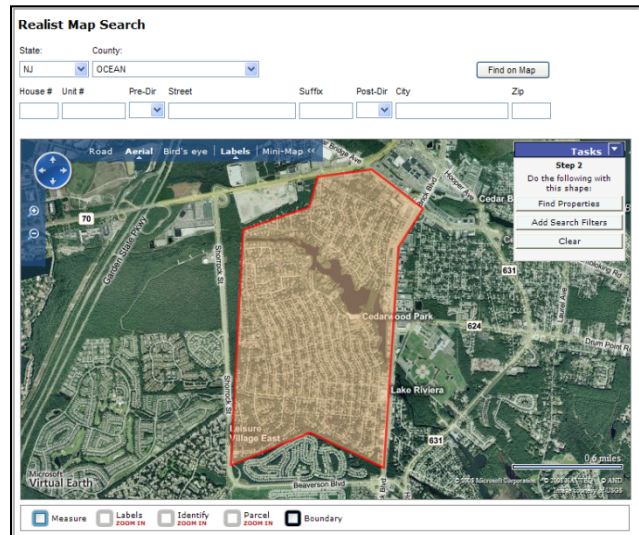
Once you have zoomed to the general area in which you wish to search, draw the polygon, radius or rectangle in which you wish to search.

Once the area is drawn as you wish, you can click *Find Properties* to conduct the search. A sample polygon appears to the right.

To *draw a polygon*, click on each point defining the perimeter of the area.

To *draw a rectangle*, click on the upper left corner, then the lower right corner.

To *draw a radius*, click on the center point, then any point on the outer perimeter.



If the area you draw is mistaken, click the **Clear** icon to start again.

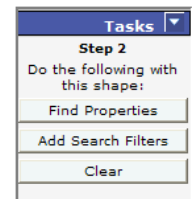
You can display aerial imagery before or after you draw an area in which to search. Viewing aeriels can be very helpful, as you will be able to draw boundaries more or less incorporating specific property lines.

Filtering Properties Retrieved by the Realist Map Search

Once you have defined the area in which you wish to search for properties, you have the option of filtering using numerous criteria. Click *Add Search Filters*.

Note:

Search Filters appear below the map. Scroll down to edit the filters.



The sequential steps to filter the search results are:

- Left box – Click the field to filter in your search
- Center box – Enter or select the search criteria
- Right box – Review the selected search criteria

The screenshot shows a search filtering dialog box with three main sections:

- Select and edit a filtering option:** A list of search criteria including LOT ACREAGE, LOT AREA, OWNER NAME, OWNER OCCUPIED, PHONE NUMBER, POOL, RECORDING DATE, SALE PRICE, SALE DATE, SALE PRICE TYPE, STORIES, TOTAL VALUE, and YEAR BUILT. The 'POOL' option is selected.
- POOL:** Two radio buttons: 'Only Include' (selected) and 'Exclude'. Below are 'OK' and 'Cancel' buttons.
- Selected Search Criteria:** Two checked items: 'BATHROOMS is from 1 to 2' and 'BEDROOMS is from 3 to 4'. A 'Find Properties' button is located at the bottom.

To delete one or more selected criteria, click on each corresponding red “X” in the right hand box.

To begin the search, click on *Find Properties*.

Working with Search Results

When Map Search is complete, it will present a list in a manner identical to all other Realist searches. You can use all the customary Realist functions such as Export, Comparables and Neighbors.