

Saturday & Sunday Open Houses

TheMLS.com GUIDE™

↑ MOST ACCURATE REAL ESTATE SOURCE™



Open Sun 2/24 from 1-4pm
Open Tues 2/26 from 11-2
Serving Lunch



2993 North Beverly Glen Cir

Bel Air

www.2993beverlyglencir.com

Incredible gated 6 bedroom 9 bath Italianate villa with approximately 7,167SF built in 2003 with impeccable attention to every detail. Oversized public rooms flow seamlessly from one to another inviting large scale entertaining spilling over multiple outdoor areas with views of the city and ocean including pool and spa. Sumptuous master suite includes sitting/office area and fireplace with amazing views of the ocean and city. Huge walk in closets and lovely his/hers baths with steam showers and spa tub. Special finishes include imported custom stone and granites, elevator and six car garage. Great location with easy access to the Westside and Valley and close to Bel Air's best shopping and dining.



Jonathan C. Sands

310.704.6612

Jon@JonCSands.com

DRE: 01258453

Sotheby's
INTERNATIONAL REALTY

offered at: \$3,590,000

For Additional Real Estate Updates Visit:

www.JonCSands.com

9665 Wilshire Boulevard, Suite 100 • Beverly Hills, California 90212 • sothebyshomes.com/losangeles

Operated by Sotheby's International Realty, Inc. Sotheby's International Realty does not guarantee the accuracy of square footage, lot size, or other information concerning the condition or features of the property provided by the seller or obtained from public records or other sources.

Saturday, February 23 & Sunday, February 24, 2013

List of Open Houses

1438 SAN YSIDRO DRIVE | BEVERLY HILLS



Charming, traditional home in a fantastic location, on the widest part of San Ysidro and close to the heart of Beverly Hills. A spacious master bedroom and master bath featuring a free standing tub are located on the sun-filled second floor. The clean, updated kitchen opens through French doors to a bricked patio and garden. Warm, well maintained and in perfect move-in condition.

BY APPOINTMENT ONLY
\$1,550,000

JUSTIN P. HUCHEL
310.617.4824

HILTON & HYLAND
CHRISTIE'S
INTERNATIONAL REAL ESTATE

Two Acres

(approximately 83,166 per assessor)

624 & 628 N. Bonhill

Two Homes On Two Lots Down A Private Drive That Can Be Renamed Prime Brentwood



Simon Salloom
 WestsideSimon.com
 310.749.8686

For Discerning Buyers and Sellers of Fine Homes

BonhillEstate.com
 or Text **LUXE** to **69302**
 And Inspire Magnificence

LUXURY
 PROPERTIES



The lowest priced I.P. in Venice!

\$949,500



539 VENICE WAY

OPEN HOUSE: SUNDAY 2-17-2013 BETWEEN 1:00 PM -4:00 PM



These 2 units can easily be converted into a single family home, or keep it as 2 permitted income units. Lots of options at the Buyer's hand. Great location-Ocean Breeze! Both units are gorgeous. Rear Unit is a 2 story - 20' high slanted ceiling w/ fireplace, bright, natural

light w/large skylight. This unit features 2 bedrooms, 2 baths and two large balconies, and attached 2 car direct access garage. Front unit with high ceilings features one bedroom, 1 bath and a nice front patio.



Sarit Finkelstein
310-612-6777



468 N Camden Drive Beverly Hills, CA 90210

Broker/Agent does not guarantee the accuracy of the information concerning the conditions or features of the property provided by the seller or obtained from Public Records or other sources. Information deemed reliable but not guaranteed. Prepared by: Sarit Finkelstein DRE# 01201120

2013 BUILT CAPE COD TRADITIONAL



\$1,749,000 | OPEN HOUSE FRIDAY, MARCH 1ST 11-2 & SUNDAY MARCH 3RD 1-4



STEVE SHRAGER

818-606-7862

CALLME4RE@AOL.COM

WWW.4445WORTSER.COM

4445 WORTSER AVE

APPROX 4,000 SQFT 5+4.5 CAPE COD TRAD W/TOP-OF-THE-LINE DESIGNER SELECTED FINISHES & FIXTURES, SUCH AS CUSTOM CRAFTED WOODWORK, MOLDING, CARRARA MARBLE, CEASERSTONE, TILE WORK, CABINETRY, WIDE PLANK WOOD FLRS & PROFESSIONAL S/S APPLIANCES IN CENTER ISLAND KIT. MOST ROOMS PRE-WIRED FOR FLAT SCREEN TV'S, CABLE, CAT-5 AS WELL AS ALARM & SURVEILLANCE SYSTEM. THE 5-STAR MASTER SUITE HAS TWO WALK-IN CLOSETS, FIREPLACE & BALCONY OVERLOOKING THE GRASSY BACKYARD W/POOL & SPA. CALL FOR A PRIVATE SHOWING.

©2012 Coldwell Banker Real Estate LLC. Coldwell Banker® Previews® and Coldwell Banker Previews International® are registered trademarks licensed to Coldwell Banker Real Estate LLC. An Equal Opportunity Company, Equal Housing Opportunity. Owned And Operated By NRT LLC. Broker does not guarantee the accuracy of square footage, lot size or other information concerning the condition or features of property provided by seller or obtained from public records or other sources, and the buyer is advised to independently verify the accuracy of that information through personal inspection and with appropriate professionals.

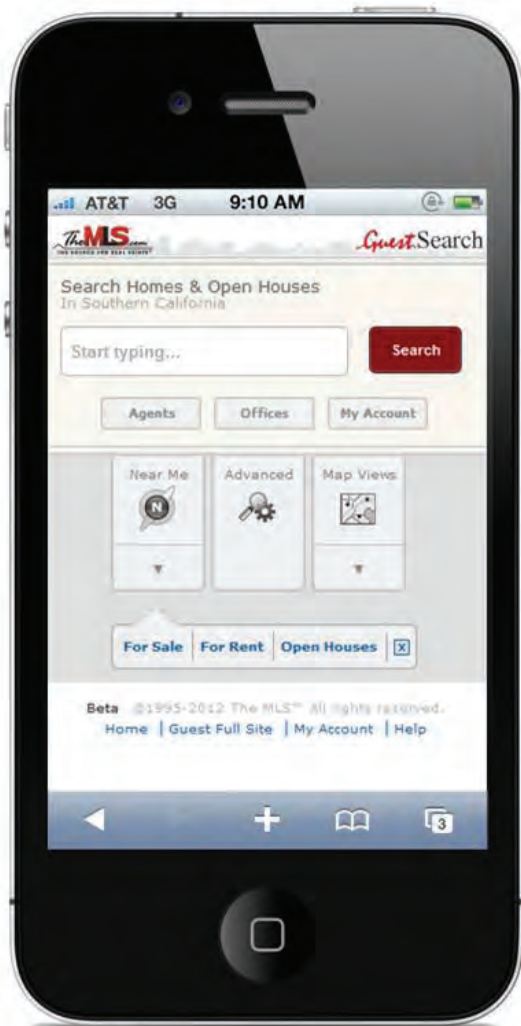


RESIDENTIAL BROKERAGE



If You're looking for the Most Accurate and Convenient
Real Time Access to **ALL** Properties For Sale in Southern California
Go To THE SOURCE

The MLS™ Goes Mobile!



Try Our Beta Site:



<http://TheMLS.com/m>

Locate Properties Throughout Southern California with **ANY** Smart-Phone!

Amazing Floor Plan New Home



4445 ETHEL AVE

Saturday & Sunday 1pm - 4pm www.patrickbengal.com

EXCEPTIONAL NEW HIGH QUALITY CRAFTSMANSHIP & EXTRAORDINARY CAPE COD/EAST COAST STYLE ESTATE NEWLY CONSTRUCTED IN A QUIET AREA OF STUDIO CITY. 8100 SF LOT SIZE, 5BR + 5.5BA. ALARM SYSTEM W/6 CAM, GOURMET KITCHEN W/LARGE SIZE WINDOW OVERLOOKING TO ONE OF A KIND LUSH BACK-YARD & POOL VIEWS, 48' SUB-ZERO REFR. &

SUB-ZERO 48" STOVE W/DOUBLE OVEN & HOOD, MARBLE THROUGHOUT, ELEGANT BUTLER PANTRY W/WARMING DRAWER & WINE COOLER. SALT WATER SYSTEM POOL & SPA. SMART HOME SYSTEM CONTROLS LIGHTS & MORE.

Offered At **\$2,195,000**

Patrick Bengal
(818) 300-5921

14148 Magnolia Blvd #100
Sherman Oaks, CA 91423
www.4445Ethel.com



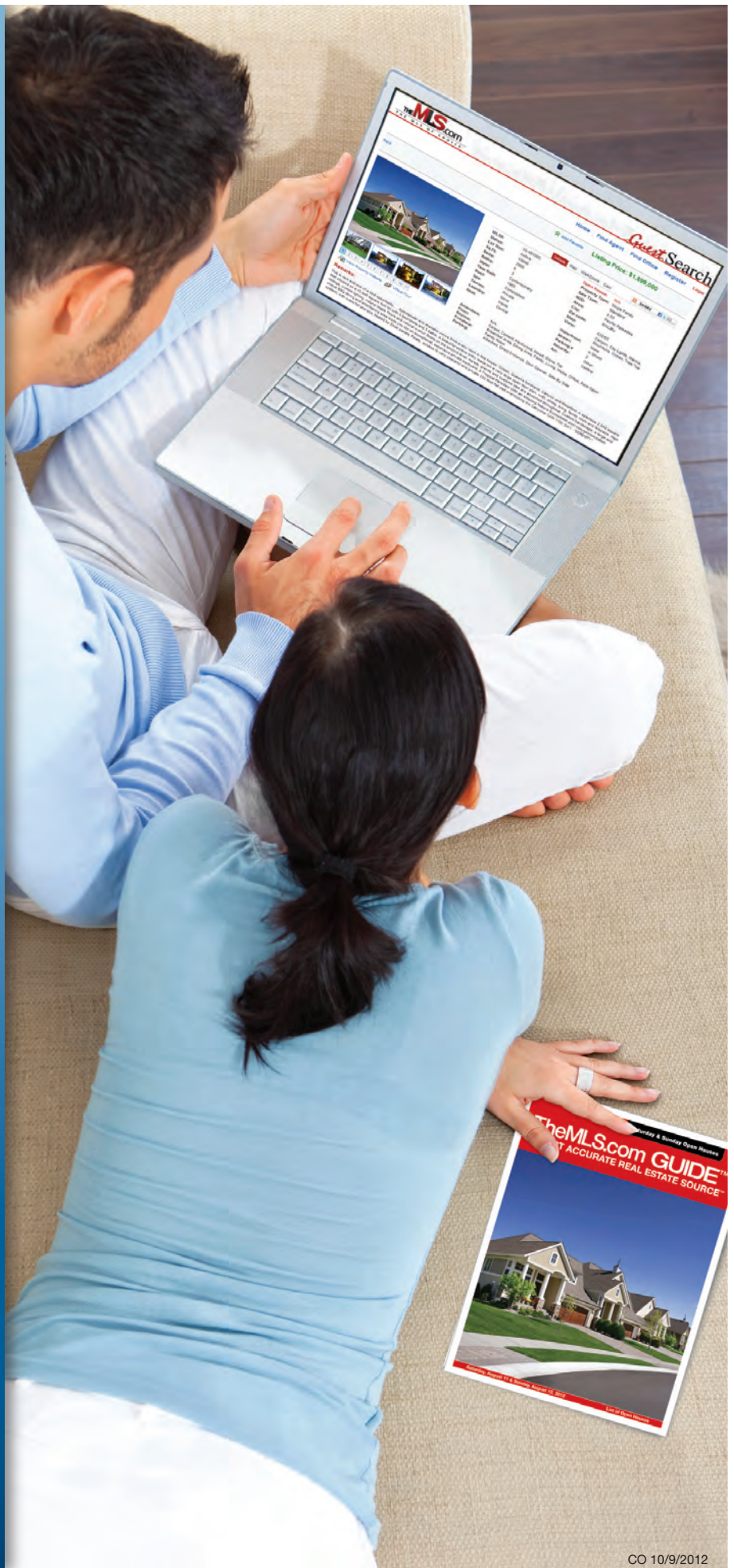
Looking for Property in
Southern California?

Go to
THE SOURCE...

TheMLS.com
THE MLS OF CHOICE™

...Where the Other
Real Estate Websites
get **THEIR** Information!

Visit TheMLS.com



TheMLS.com GUIDE™
 MOST ACCURATE REAL ESTATE SOURCE™

822 South Robertson Boulevard, Ste 202
 Los Angeles, CA 90035
 Tel: 310.358.1833
 Fax: 310.360.1730
 Email Ads: production@themls.com

Ad materials on CD also may be sent to and/or dropped off at: 822 S. Robertson Blvd., Suite 202, Los Angeles, CA, 90035. (NOTE: We do NOT accept native files such as Quark, Illustrator, InDesign, etc. Those types of files should be converted to PDF Format. We do NOT accept camera ready ads, film or reflective artwork, or files containing RGB or LAB images.)

Combined L.A./Westside MLS, Inc.
The MLS™/CLAW

Chief Executive Officer
 Annie Ives

Production Manager
 Mark Sternberg
 310.358.1100 x145

Production Staff
 Maria Anelli
 Charlie Ortega
 Cynthia Constanza
 424.249.6215

The MLS Weekend Homes & Open Houses™ Terms & Conditions
 The MLS®/CLAW reserves the right to change deadlines and pricing at any time and for any reason.

The MLS Weekend Homes & Open Houses™ is published and distributed weekly by The MLS®/CLAW, 822 S. Robertson Blvd., #202, Los Angeles, CA, 90035, 310.358.1833 voice, 310.360.1730 fax, www.themls.com™. Advertising information can be obtained by contacting the publisher.

All properties and services advertised are subject to prior sale, withdrawal, or change without notice.

The MLS®/CLAW reserves the right to refuse any advertising it deems unsuitable and to edit any advertising.

The MLS®/CLAW may, in its sole discretion, accept paid advertising for any of its publications (whether paper, online, electronic, or in any other form or medium). Any such advertising shall comply with such guidelines for advertising as may be adopted or revised by CLAW from time to time. No such advertising shall include statistical or numerical comparisons of performance between or among different real estate brokerage firms, brokers, or agents.

The MLS Weekend Homes & Open Houses™ is not licensed as a real estate broker and does not represent, assist, or provide services to persons in the purchase, sale, rental, financing, or appraisal of real property or other transactions. Persons desiring such services should consult appropriate professionals.

By placing any advertising in The MLS Weekend Homes & Open Houses™, advertisers agree to indemnify and hold the publisher and its affiliates harmless from and against all claims, losses, liabilities, damages, costs, and expenses, including attorneys' fees, asserted against or incurred by the publisher and its affiliates, associated with the property or services advertised, including without limitation when due to the negligence or other fault of the publisher or its affiliates.

The publisher and its affiliates are not liable or responsible for any claims, losses, liabilities, damages, costs, or expenses of any kind, arising in whole or in part from the text, graphics, or representation of any advertising published herein, the nature, condition, value, or desirability of any property or services advertised, any errors, omissions, out of date information, or misprints, or any associated transaction. The publisher and its affiliates specifically disclaim any such liability or responsibility.

All housing and related services advertised in The MLS Weekend Homes & Open Houses™ are subject to the U.S. Fair Housing Act of 1968 and Fair Housing Amendments of 1988, as amended, and other applicable laws, which make it a violation of law to discriminate against any person because of race, color, religion, sex, handicap, familial status, or national origin, in the sale or rental of housing, advertising the sale or rental of housing, financing of housing, provision of real estate brokerage services, or appraisal of housing.

Copyright © 2013. All rights reserved. Reproduction in whole or part, in any form, without the prior written consent of the publisher, is strictly prohibited. Full terms and conditions may be obtained by contacting the publisher in writing. The publisher reserves the right to modify such terms and conditions at any time without prior notice. No person has authority to vary any such terms and conditions, verbally or in writing, without written authority from the publisher.

SHOWCASE ADS

OPEN HOUSES

SAT WESTSIDE / LOS ANGELES
 Westwood - Century City 19

SAT SAN FERNANDO VALLEY
 Tarzana 19

SUN WESTSIDE / LOS ANGELES
 Bel Air - Holmby Hills 19
 Brentwood 19
 Downtown L.A. 19
 Hollywood Hills East 19
 Inglewood 19
 Pacific Palisades 19
 Playa Del Rey 19
 Santa Monica 20
 Sunset Strip - Hollywood Hills West 20

SUN OTHER AREAS
 Palm Desert North 20

BY APPOINTMENT

WESTSIDE / LOS ANGELES
 Westwood - Century City 20

NEW LISTINGS (1-7 days)
WESTSIDE / LOS ANGELES
 Santa Monica 20
 Venice 20

Saturday & Sunday Open Houses
TheMLS.com GUIDE™
 MOST ACCURATE REAL ESTATE SOURCE™

**Open Sun 2PM thru 4PM
 Open Sun 2PM thru 4PM
 Serving Lunch**

2993 North Beverly Glen Cir Bel Air www.2993beverlyglencir.com
 Incredible gem in Bel Air's North Holmby Hills with approximately 7,000 sq. ft. and spectacular views in every direction. Covered patio runs the width of the house to another inviting large side entrance opening over multiple outdoor areas with views of the city and ocean including pool and spa. Sample room never before including living office area and fireplace with amazing views of the ocean and city. High walls in clean and bright kitchen with granite island and top oak. Special features include imported custom stone and granite, shower and tile to go. Close to home with easy access to the Westside and Valley and close to Bel Air's best shopping and dining.

Jonathan C. Sands
 310.794.6412
 jon@jcsands.com
 www.jcsands.com

Sotheby's
 Offered at \$3,390,000
 For Additional Info Email: jcsands@sothebys.com
 www.jcsands.com

Saturday, February 23 & Sunday, February 24, 2013 List of Open Houses

On the front cover:
Jonathan C. Sands, Sotheby's

DIRECTORIES

Open Houses - Saturday 10
 Open Houses - Sunday 10-12
 New Listings 12-18

PREMIUM ADVERTISERS

Justin P. Hurchel 2
 Simon Salloom 3, A1
 Sarit Finkelstein 4
 Sandi Lewis A2

FEATURED LISTINGS

see Inside Back Cover
 see Back Cover

www.themls.com™

The MLS™/CLAW, also known as the Combined L.A./Westside Multiple Listing Service, Inc., is the most reliable and most accurate source of real estate information for the Greater Los Angeles Metropolitan area. The MLS™ owns and manages the most complete and up-to-date database of real estate listings.

IFC - INSIDE FRONT COVER, IBC - INSIDE BACK COVER, BC - BACK COVER

OPEN HOUSES DIRECTORY

REFRESHMENTS * LUNCH & THEMSPRO™ OPEN HOUSES

OPEN HOUSES DIRECTORY

SATURDAY		WESTSIDE / LOS ANGELES	
BEVERLY HILLS POST OFFICE <i>Single Family</i>			
12-621065	592D2 Sa 1-4	2229 SUMMITRIDGE DR	\$4,999,999 7+8 *
BEVERLYWOOD VICINITY <i>Condo / Co-op</i>			
13-652441	633A4 Sa 12-3	1444 S POINT VIEW ST #207	\$500,000 3+2 *
BRENTWOOD <i>Condo / Co-op</i>			
13-648871	631H4 Sa 1-4	11733 MONTANA AVE #106	\$629,000 2+3 *
EAGLE ROCK <i>Single Family</i>			
13-651397	594J1 Sa 1-4	4375 TOLAND WAY	\$594,500 3+2 *
HANCOCK PARK-WILSHIRE <i>Condo / Co-op</i>			
13-651447	633F3 Sa 1-3	861 S WINDSOR #304	\$435,000 3+2.5 *
HOLLYWOOD HILLS EAST <i>Single Family</i>			
13-652533	563A7 Sa 1-5	7840 TORREYSON DR	\$3,500,000 3+4.5 *
INGLEWOOD <i>Single Family</i>			
13-651863	672J7 Sa 1-4	6425 SPRINGPARK AVE	\$759,000 3+4 *
MALIBU BEACH <i>Single Family</i>			
12-617749	626H7 Sa 1-4	31500 VICTORIA POINT RD	\$9,950,000 4+4.5 *
MARINA DEL REY <i>Condo / Co-op</i>			
12-633827	672A6 Sa 2-4	1046 PRINCETON DR #205	\$1,345,000 2+1 *
12-633833	672A6 Sa 2-4	1046 PRINCETON DR #106	\$895,000 1+2 *
12-634023	672A6 Sa 2-4	1046 PRINCETON #203	\$629,000 1+1 *
METROPOLITAN SOUTH <i>Single Family</i>			
13-652181	704G6 Sa 1-4	1774 E 111TH PL	\$239,900 3+3.5 *
METROPOLITAN SOUTHWEST <i>Single Family</i>			
13-652841	703J1 Sa 12-4	7314 DALTON AVE	\$249,900 2+1 *
MID LOS ANGELES <i>Single Family</i>			
13-647837	6335 Sa 1-4	1926 THURMAN AVE	\$679,000 4+3 *
MID-WILSHIRE <i>Single Family</i>			
13-652649	634A1 Sa 11-2	141 N BERENDO ST	\$609,900 4+3 *
MID-WILSHIRE <i>Condo / Co-op</i>			
13-652355	633G3 Sa 12-4	871 CRENSHAW #204	\$595,000 3+2 *
MOUNT WASHINGTON <i>Single Family</i>			
13-652537	594J5 Sa 1-4	642 ETTA ST	\$499,000 3+2.5 *
PACIFIC PALISADES <i>Single Family</i>			
13-651839	631D3 Sa 1-4	1630 AMALFI DR	\$4,200,000 4+3.5 *
PARK HILLS HEIGHTS <i>Single Family</i>			
13-650405	673F3 Sa 1-4	3309 W 41ST ST	\$499,900 4+3 *
PLAYA VISTA <i>Condo / Co-op</i>			
13-651085	702D1 Sa 1-4	5625 CRESCENT PARK WEST #420	\$1,325,000 4+3 *
SANTA MONICA <i>Single Family</i>			
13-646035	671J3 Sa 1-4	2211 ASHLAND AVE	\$1,175,000 2+1.75 *
SANTA MONICA <i>Condo / Co-op</i>			
	Sa 11-2	1118 21ST STREET #104	\$1,552,000 3+2.5 *
13-651697	631F7 Sa 1-4	1118 21ST ST #104	\$1,552,000 3+2.5 *
SILVER LAKE - ECHO PARK <i>Single Family</i>			
13-652561	634E1 Sa 1-4	1039 W KENSINGTON RD	\$995,000 5+3 *
13-652411	594E6 Sa 1-4	1864 LEMOYNE ST	\$849,000 3+2 *
13-652509	594D5 Sa 1-4	1855 REDESDALE AVE	\$775,000 3+1.5 *
13-645217	634D1 Sa 1-4	1932 KENT ST	\$499,500 2+1 *
13-652641	6341 Sa 1-5	141 N PARK VIEW ST	\$469,900 3+3 *
WEST HOLLYWOOD VICINITY <i>Condo / Co-op</i>			
13-644717	593B5 Sa 1-4	1426 N LAUREL AVE #109	\$599,000 2+2.5 *
WEST L.A. <i>Condo / Co-op</i>			
13-646681	632A6 Sa 1-4	1931 BARRY AVE #1	\$1,199,990 4+3.5 *
WESTWOOD - CENTURY CITY <i>Lease</i>			
13-648485	632B3 Sa 1-5	10833 WILSHIRE BLVD #210	\$4,020 2+2 p.19

13-652053PS	786G1 Sa 12-3	595 N CERRITOS DR	\$489,000 3+2 *
PALM SPRINGS SOUTH END <i>Single Family</i>			
13-652489PS	786C3 Sa 11-2	589 S LA MIRADA RD	\$1,425,000 3+4.5 *
13-650557PS	786C3 Sa 12-3	568 S LA MIRADA RD	\$1,250,000 4+3.5 *
13-651019PS	816F2 Sa 11-2	64933 SARAGOSSA DR	\$799,000 4+4.5 *
13-648381PS	786F7 Sa 11-2	2730 W KINGS RD	\$695,000 3+3.5 *
41463032PS	786F3 Sa 1-3	683 DUNES CT	\$535,000 2+2 *
PALM SPRINGS SOUTH END <i>Condo / Co-op</i>			
13-648213PS	786G7 Sa 12-3	2375 S TOLEDO AVE	\$599,000 3+2.5 *
PALM SPRINGS SOUTH END <i>Residential Manufactured/Mobile Home</i>			
13-652381PS	787D5 Sa 2-4	124 CALLE DEL CALLADO	\$35,000 2+2 *
PASADENA <i>Single Family</i>			
13-651929	565H2 Sa 11-2	162 E CLAREMONT ST	\$550,000 6+2 *
SAN PEDRO <i>Single Family</i>			
13-647639	823J5 Sa 1-4	1447 W 2ND ST	\$409,000 3+2 *
12-636065	824B7 Sa 1-4	2619 S KERCKHOFF AVE	\$354,000 2+2 *
SOUTH GATE <i>Single Family</i>			
13-652493	705D4 Sa 11-5	9534 ALEXANDER AVE	\$359,900 3+2 *
OUT OF AREA <i>Single Family</i>			
13-648251PS	756E5 Sa 12-3	2108 GEORGE DR	\$589,000 4+3 *
13-651377PS	787C6 Sa 12-3	2789 N JUNIPERO RD	\$459,000 3+2 *
13-650809PS	787C1 Sa 1-3	67857 30TH AVE	\$214,000 3+2 *
OUT OF AREA <i>Condo / Co-op</i>			
13-652817	595D4 Sa 12-4	898 TEMPLE TERRACE #214	\$299,900 2+1 *
OUT OF AREA <i>Land</i>			
13-652063	392-C Sa 11-1	0 VAC/27 STW/VIC AVENUE C6	\$177,700 Land *

SATURDAY		SAN FERNANDO VALLEY	
EAST VAN NUYS <i>Single Family</i>			
13-643177	532D7 Sa 10-5	6219 ATOLL AVE	\$449,000 3+2 *
TARZANA <i>Single Family</i>			
SRL13023509CN	Sa 12-4	18519 LINNET STREET	\$1,299,000 5+6 p.19

SATURDAY		OTHER AREAS	
BURBANK <i>Single Family</i>			
13-650585	563C2 Sa 1-4	911 N KENWOOD ST	\$649,800 3+2 *
DESERT HOT SPRINGS <i>Income</i>			
13-651097	696H4 Sa 2-4	66197 CAHUILLA AVE	\$295,000 *
GLENDALE <i>Single Family</i>			
13-645975	534J5 Sa 1-4	2038 MONTECITO DR	\$1,290,000 4+5 *
GLENDALE <i>Income</i>			
13-652631	564D2 Sa 12-2	1231 VALLEY VIEW RD	\$949,000 *
PALM SPRINGS CENTRAL <i>Single Family</i>			
41451830PS	756D7 Sa 11-3	280 CAMINO SUR	\$1,649,000 3+4 *
13-652487PS	756C6 Sa 2-4	925 W PANORAMA RD	\$1,275,000 4+3 *
41460735PS	756D7 Sa 11-3	700 PRESCOTT DR	\$999,000 3+4 *

SUNDAY		WESTSIDE / LOS ANGELES	
BEL AIR - HOLMBY HILLS <i>Single Family</i>			
13-647479	592B7 Su 1-4	347 ST CLOUD RD	\$9,900,000 5+4 *
13-650911	591H1 Su 1-4	3051 ANTELO VIEW DR	\$6,950,000 5+5 p.IBC *
12-592701	591H1 Su 1-4	15433 BROWNWOOD PL	\$6,950,000 6+6 *
	592A1 Su 1-2	2993 N BEVERLY GLEN CIR	\$3,590,000 6+9 p.19 *
12-624275	591H2 Su 1-4	2327 DONELLA CIR	\$1,240,000 3+2 *
12-638723	592A4 Su 1-4	1709 N BEVERLY GLEN BLVD	\$899,000 4+4 *
13-647167	592A3 Su 1-4	2426 N BEVERLY GLEN BLVD	\$835,000 3+2 *
BEVERLY CENTER-MIRACLE MILE <i>Single Family</i>			
12-640045	633B1 Su 1-4	6414 COLGATE AVE	\$2,699,000 5+5.5 *
13-644411	633A1 Su 1-4	8366 W 4TH ST	\$2,549,000 4+5.5 *
12-639667	593A7 Su 1-4	538 N HARPER AVE	\$2,499,000 4+5 *
12-635531	633B1 Su 1-4	102 N EDINBURGH AVE	\$2,350,000 5+5.5 *
13-650429	593C7 Su 1-2	435 N MARTEL AVE	\$1,749,000 3+3.5 *
BEVERLY CENTER-MIRACLE MILE <i>Income</i>			
13-645021	633A1 Su 1-4	104 N HARPER AVE	\$1,995,000 *
BEVERLY HILLS <i>Single Family</i>			
13-642377	592E6 Su 1-4	1130 SHADOW HILL WAY	\$13,495,000 7+14 p.IBC *
12-637453	592F7 Su 1-4	616 N FOOTHILL RD	\$9,995,000 7+8.5 *
13-649871	632F1 Su 1-4	631 N CRESCENT DR	\$8,500,000 6+3 *
13-649809	632G2 Su 1-4	205 N ELM DR	\$3,850,000 4+5.5 *
13-652699	632H2 Su 1-4	265 S CLARK DR	\$1,799,000 3+2 *
BEVERLY HILLS <i>Condo / Co-op</i>			
13-649131	632H1 Su 2-4	325 N OAKHURST DR #504	\$1,290,000 2+2.5 *
BEVERLY HILLS POST OFFICE <i>Single Family</i>			
12-621065	592D2 Su 1-4	2229 SUMMITRIDGE DR	\$4,999,999 7+8 *
13-652109	592F5 Su 1-4	1331 SCHUYLER RD	\$4,250,000 5+5 *
13-651671	592D5 Su 1-4	1371 TOWER GROVE DR	\$2,990,000 4+5 *
13-652713	592D5 Su 1-4	1350 SUMMITRIDGE DR	\$2,349,000 3+3.5 *
BEVERLYWOOD VICINITY <i>Condo / Co-op</i>			
13-643407	632J4 Su 1-4	1211 S SHENANDOAH ST #304	\$695,000 2+3.5 *
BRENTWOOD <i>Single Family</i>			
12-629437	631D1 Su 2-5	2228 JEFFERSONIA WAY	\$5,500,000 5+5.5 *
13-646731	631F2 Su 1-4	628 N BONHILL RD	\$5,199,000 3+2 p.19 *
13-646731	631F2 Su 1-4	628 N BONHILL RD	\$5,199,000 3+2 p.A1 *
13-643629	631G3 Su 1-4	111 HOMEWOOD RD	\$2,995,000 4+3.5 *
13-642787	631F2 Su 1-4	333 CROWN DR	\$2,695,000 3+2.5 p.19 *
13-651981	631F2 Su 1-4	567 N GREENCRAIG RD	\$2,195,000 4+4 *
13-643023	631F2 Su 1-4	540 TUALLITAN RD	\$1,895,000 4+3 *
12-628091	591C1 Su 1-4	13001 SKY VALLEY RD	\$1,695,000 4+3 *
BRENTWOOD <i>Condo / Co-op</i>			
12-639489	631H3 Su 1-4	11633 CHENAULT ST #PH402	\$1,095,000 3+2.5 *
13-647985	631H4 Su 1-4	11628 MONTANA AVE #302	\$999,000 2+2.5 *
13-650455	631H5 Su 1-4	11959 MAYFIELD AVE #4	\$919,000 2+2.5 *
12-639409	631H3 Su 1-4	11633 CHENAULT ST #103	\$849,000 2+2.5 *
12-639427	631H3 Su 1-4	11633 CHENAULT ST #203	\$799,000 2+2.5 *
12-639411	631H3 Su 1-4	11633 CHENAULT ST #201	\$769,000 2+2.5 *
13-652599	631H1 Su 1-4	11687 BELLAGIO RD #3	\$750,000 2+2.5 *

SAT/SUN

REFRESHMENTS X LUNCH		THEMLS PRO™ OPEN HOUSES		OPEN HOUSES DIRECTORY		IFC - INSIDE FRONT COVER, IBC - INSIDE BACK COVER, BC - BACK COVER							
13-651855	631H4	Su 1-4	11636 MONTANA AVE #106	\$724,900	2+3	*	12-631555	630G2	Su 1-4	16788 MONTE HERMOSO DR	\$2,599,000	5+5	*
12-639407	631H3	Su 1-4	11633 CHENAULT ST #102	\$675,000	2+2.5	*			Su 1-4	850 LACHMAN LN	\$2,535,000	4+3.5	p.19
12-639439	631H3	Su 1-4	11633 CHENAULT ST #302	\$659,000	2+2.5	*			Su 1-4	850 LACHMAN LANE	\$2,535,000	4+3.5	*
13-648871	631H4	Su 1-4	11733 MONTANA AVE #106	\$629,000	2+3	*	13-644313	630G2	Su 1-4	16697 CUMBRE VERDE CT	\$2,450,000	4+4.5	*
12-639421	631H3	Su 1-4	11633 CHENAULT ST #202	\$599,000	2+2.5	*	13-652837	631A5	Su 1-4	767 HAVERFORD AVE	\$2,395,000	4+4.5	*
13-650123	631H4	Su 1-5	11687 MONTANA AVE #206	\$499,000	2+2	*	13-652115	630H5	Su 1-4	629 N LAS CASAS AVE	\$1,895,000	3+2	*
13-651301	631H4	Su 1-4	11920 DOROTHY ST #104	\$399,000	1+1	*	12-642143	630G5	Su 1-4	16908 DONNA YNEZ LN	\$1,599,900	4+2.5	*
BRENTWOOD							13-652635	630F6	Su 1-4	17734 PORTO MARINA WAY	\$1,485,000	2+2	*
12-608405	631E2	Su 1-4	1957 MANDEVILLE CANYON RD	\$18,000	4+3.5	*	13-645477	630E5	Su 1-3	3516 SHOREHEIGHTS DR	\$1,379,000	3+2	*
CHEVIOT HILLS - RANCHO PARK							PACIFIC PALISADES						
13-644335	632G7	Su 1-4	3245 SHELBY DR	\$1,795,000	5+4	*	Condo / Co-op						
CULVER CITY							13-648983	630F1	Su 1-4	17201 PALISADES CIR	\$759,000	3+3	*
13-650369	672F5	Su 2-5	4916 BERRYMAN AVE	\$575,000	3+1	*	12-638139	630H5	Su 1-4	16601 MARQUEZ AVE #201	\$738,000	3+2	*
DOWNTOWN L.A.							13-649573	631A5	Su 1-4	15330 ALBRIGHT ST #103	\$645,000	2+2	*
12-634555	634C6	Su 1-4	2101 OAK ST	\$639,500	6+3.5	p.19	PALMS - MAR VISTA						
EAGLE ROCK							Single Family						
13-646189	565C6	Su 1-4	5024 MONTE BONITO DR	\$689,000	5+2	*	12-639461	672C3	Su 1-4	11925 CHARNOCK RD	\$1,860,000	5+4.5	*
13-652195	565B5	Su 1-4	5207 LA RODA AVE	\$599,000	3+2	*	13-646207	672C3	Su 1-4	3659 OCEAN VIEW AVE	\$1,799,000	4+3.5	*
HANCOCK PARK-WILSHIRE							13-651869	672C3	Su 1-4	11942 CHARNOCK RD	\$1,388,000	3+2.75	*
13-649331	593E7	Su 1-4	644 N CHEROKEE AVE	\$1,499,000	4+3	*	13-651991	672B2	Su 1-4	12426 STANWOOD PL	\$1,195,000	4+3	*
12-639619	633G2	Su 2-5	357 S VAN NESS AVE	\$1,238,885	4+3	*	13-644217	632E7	Su 1-4	3231 MALCOLM AVE	\$1,100,000	3+2	*
12-634729	593G7	Su 1-4	507 N IRVING BLVD	\$1,198,000	4+4.5	*	13-646327	672B4	Su 1-4	3715 MOORE ST	\$859,000	3+2	*
13-644637	593G7	Su 1-4	591 N IRVING BLVD	\$899,000	3+1.75	*	PALMS - MAR VISTA						
13-647265	633G4	Su 1-4	1262 5TH AVE	\$795,000	4+2	*	Condo / Co-op						
HOLLYWOOD							13-652691	672B3	Su 1-4	3544 S CENTINELA AVE #102	\$459,000	2+2	*
13-652309	593D5	Su 1-4	1419 N ORANGE DR	\$820,000		*	13-651899	672D4	Su 1-4	4125 INGLEWOOD #1	\$350,000	2+1.75	*
HOLLYWOOD HILLS EAST							PARK HILLS HEIGHTS						
13-652533	563A7	Su 1-5	7840 TORREYSON DR	\$3,500,000	3+4.5	*	Single Family						
13-646837	593F1	Su 1-4	3174 DERONDA DR	\$1,700,000	4+4	*	13-648819	673D1	Su 1-4	3712 S MUIRFIELD RD	\$585,000	3+2	*
12-602487	593H3	Su 1-4	2039 N GRAMERCY PL	\$1,675,000	5+5	*	13-650405	673F3	Su 1-4	3309 W 41ST ST	\$499,900	4+3	*
13-648989	563F7	Su 1-4	3316 LEDGEWOOD DR	\$1,590,000	4+4	*	13-650197	673E3	Su 1-4	4121 S BRONSON AVE	\$480,000	3+2	*
13-647619	593G1	Su 1-4	2910 N BEACHWOOD DR	\$1,329,000	4+3	p.19	12-616931	673E1	Su 2-4-30	3755 S SOMERSET DR	\$460,000	3+2	*
HOLLYWOOD HILLS EAST							PARK HILLS HEIGHTS						
SR13009743CN	593G3	Su 1-4	1951 NORTH BEACHWOOD DRIVE #PH307 #PH307	\$695,000	2+3	*	Lease						
INGLEWOOD							13-649271	673E1	Su 2-4	3755 SOMERSET DR	\$2,500	3+3	*
13-651863	672J7	Su 1-4	6425 SPRINGPARK AVE	\$759,000	3+4	p.19	PLAYA DEL REY						
LOS FELIZ							Single Family						
13-650287	594C2	Su 1-4	3643 LOWRY RD	\$1,249,000	4+3.5	p.18C	13-652847	702B3	Su 1-4	413 TALBERT ST	\$699,000	3+2	*
13-651953	594E3	Su 1-4	3013 GLENHURST AVE	\$474,500	2+3	*	PLAYA DEL REY						
MALIBU							Income						
12-614385	627F7	Su 1-4	5630 VILLA MAR PL	\$5,150,000	6+7	*	13-651481	631D6	Su 1-4	337 12TH ST	\$3,875,000	5+4.5	*
12-614381	627F7	Su 1-4	5620 VILLA MAR PL	\$3,950,000	5+5.5	*	12-640083	631E5	Su 1-4	333 24TH ST	\$3,295,000	5+2.75	*
13-645173	626D4	Su 2-5	3650 DECKER EDISON RD	\$2,875,000	4+3.5	*	13-649967	631D7	Su 1-4	551 LINCOLN BL	\$2,995,000	5+4.5	*
MALIBU							13-645053	631D5	Su 1-4	253 19TH ST	\$2,850,000	3+2.75	*
12-635409	628J7	Su 1-3	23922 DE VILLE WAY #C	\$775,000	2+2	*	13-650367	631D6	Su 1-4	428 EUCLID ST	\$2,450,000	3+2	*
MALIBU							12-616995	671J3	Su 1-4	2329 PIER AVE	\$1,599,900	4+4	*
12-614389	627F7	Su 1-4	5610 VILLA MAR PL	\$1,250,000	Land	*	13-647721	671J2	Su 1-4	2620 24TH ST	\$1,189,000	2+2	p.20
12-608217	626H7	Su 11-5	31531 PACIFIC COAST HWY	\$1,000,000	Land	*	13-646035	671J3	Su 1-4	2211 ASHLAND AVE	\$1,175,000	2+1.75	*
MALIBU									Su 1-4	1409 ASHLAND AVENUE	\$879,000	2+1	*
12-624561	626G6	Su 1-4	32001 PACIFIC COAST HWY	\$12,900	5+5	*	SANTA MONICA						
MALIBU BEACH							Condo / Co-op						
13-644607	625G5	Su 1-4	33406 PACIFIC COAST HWY	\$10,995,000	4+4.5	*	13-652173	631G6	Su 1-4	1217 YALE ST #110	\$929,000	2+2.5	p.20
12-617749	626H7	Su 1-4	31500 VICTORIA POINT RD	\$9,950,000	4+4.5	*	13-643111	631C7	Su 1-4	222 7TH ST #202	\$696,000	2+2	*
13-645993	628G7	Su 1-4	24604 MALIBU RD	\$7,995,000	4+3.5	*	13-650115	671F3	Su 12-4	2309 5TH ST #2	\$599,000	2+2	*
MALIBU BEACH							SANTA MONICA						
12-625367	628G7	Su 1-4	24604 MALIBU RD	\$19,500	4+3.5	*	Income						
MARINA DEL REY							13-646805	672A1	Su 1-4	2435 34TH ST	\$1,500,000		p.20
12-612155	701J1	Su 1-4	4818 ROMA CT	\$1,825,000	4+3.5	*	SANTA MONICA						
MARINA DEL REY							Lease						
13-649651	672B6	Su 1-4	4215 GLENCOE AVE #407	\$515,000	1+2	*	12-627491	631E6	Su 1-4	603 16TH ST	\$5,750	3+0.75	*
MID LOS ANGELES							SILVER LAKE - ECHO PARK						
13-651977	634B7	Su 1-4	1194 W 27TH ST	\$875,000	5+5	*	Single Family						
13-647837	6335	Su 1-4	1926 THURMAN AVE	\$679,000	4+3	*	12-638415	594E3	Su 1-4	2516 IVAN HILL TER	\$1,245,000	4+1.75	*
13-652527	633B5	Su 1-4	1614 ELLSMERE AVE	\$620,000	2+1	*	13-652561	634E1	Su 1-4	1039 W KENSINGTON RD	\$995,000	5+3	*
12-630715	633C5	Su 1-4	1424 S REDONDO	\$449,000	3+2	*	13-652411	594E6	Su 1-4	1864 LEMOYNE ST	\$849,000	3+2	*
MOUNT WASHINGTON							13-652509	594D5	Su 1-4	1855 REDESDALE AVE	\$775,000	3+1.5	*
13-652537	594J5	Su 1-4	642 ETTA ST	\$499,000	3+2.5	*	13-645217	634D1	Su 1-4	1932 KENT ST	\$499,500	2+1	*
PACIFIC PALISADES							13-652641	6341	Su 1-5	141 N PARK VIEW ST	\$469,900	3+3	*
12-598105	631D3	Su 1-4	1501 UMEO RD	\$10,450,000	6+6.5	p.18C	SUNSET STRIP - HOLLYWOOD HILLS WEST						
13-651877	631B6	Su 11-2	444 CHAUTAUQUA	\$7,950,000	5+5	*	Single Family						
12-611475	631C5	Su 1-4	888 TOULON DR	\$5,995,000	5+6.5	p.19	12-633907	592H5	Su 1-4	1423 N DOHENY DR	\$3,495,000	4+5	*
13-652625	631A4	Su 1-4	15102 BESTOR	\$4,495,000	5+7	*	13-649055	593B3	Su 2-5	2025 HERCULES DR	\$2,795,000	6+4	*
13-651839	631D3	Su 1-4	1630 AMALFI DR	\$4,200,000	4+3.5	*	13-644231	592H2	Su 1-4	2556 GREENVALLEY RD	\$2,585,000	4+4.5	*
12-641443	630H1	Su 1-4	16820 CALLE BELLEVISTA	\$2,995,000	5+6	p.19	13-650109	592H4	Su 1-4	1577 N DOHENY DR	\$2,449,000	3+3.5	*
12-629903	631C5	Su 1-4	13868 W SUNSET BLVD	\$2,895,000	4+3.75	*	13-643249	592H6	Su 1-4	1305 N CLARK ST	\$2,250,000	3+4	*
							13-648927	592J3	Su 1-4	2234 STANLEY HILLS DR	\$2,195,000	3+3.5	p.18C
							12-637533	592H1	Su 1-4	8623 EDWIN DR	\$1,995,000	4+3.5	p.18C
							13-652021	592J4	Su 1-5	1618 SUNSET PLAZA DR	\$1,899,000	4+3.5	*
							13-650471	592J3	Su 1-4	8579 CRESCENT DR	\$1,549,000	3+2.5	p.20
							13-648465	593A3	Su 1-4	8171 MANNIX DR	\$849,000	2+1.75	*
							13-651759	592H2	Su 1-4	8811 SKYLINE DR	\$799,000	2+1	*
							13-652209	563D7	Su 1-4	3232 BENNETT DR	\$695,000	2+2	*
							SUNSET STRIP - HOLLYWOOD HILLS WEST						
							Condo / Co-op						
							13-651617	593C4	Su 1-4	7270 HILLSIDE AVE #305	\$399,000	1+2	*

OPEN HOUSES DIRECTORY

SUNDAY

OPEN HOUSES DIRECTORY

SUNDAY

NEW LISTINGS DIRECTORY

SUNDAY		OPEN HOUSES DIRECTORY			
SUNSET STRIP - HOLLYWOOD HILLS WEST <i>Lease</i>					
13-643463	592H6	Su 1-4	1305 CLARK ST	\$8,000	3+4 *
TOPANGA <i>Land</i>					
12-617145	590A2	Su 11-5	2170 CORVO	\$49,000	Land *
VENICE <i>Single Family</i>					
12-637495	671J5	Su 1-4	856 VENEZIA AVE	\$2,295,000	4+3.5 *
13-650879	671H7	Su 1-4	438 SHERMAN CANAL	\$2,249,000	3+2.5 *
13-649341	671J5	Su 1-4	810 SUPERBA AVE	\$1,725,000	3+2.5 *
13-652211	671J4	Su 1-4	1016 INDIANA AVE	\$950,000	3+2 *
VENICE <i>Income</i>					
13-650257	671H6	Su 1-4	539 VENICE WAY	\$949,500	p.4 *
13-650257	671H6	Su 1-4	539 VENICE WAY	\$949,500	p.20 *
WEST HOLLYWOOD VICINITY <i>Single Family</i>					
12-641059	593A6	Su 1-4	845 N HARPER AVE	\$1,595,000	3+3 *
12-636083	593D5	Su 1-4	1206 N SYCAMORE AVE	\$662,150	3+1.5 *
WEST HOLLYWOOD VICINITY <i>Condo / Co-op</i>					
13-652707	592J5	Su 1-4	8455 FOUNTAIN AVE #208	\$699,000	2+2 *
13-644717	593B5	Su 1-4	1426 N LAUREL AVE #109	\$599,000	2+2.5 *
13-650403	593A6	Su 1-4	950 N KINGS RD #266	\$495,500	2+2 *
13-651255	593A5	Su 1-4	1234 HAVENHURST DR #16	\$435,000	2+2 *
WEST L.A. <i>Single Family</i>					
13-651979	672B1	Su 1-4	2716 STONER AVE	\$995,000	3+3 *
13-648803	632D7	Su 1-4	2911 GREENFIELD AVE	\$749,000	3+2 *
13-643497	672C1	Su 1-3	11519 NATIONAL	\$649,000	3+1 *
WEST L.A. <i>Condo / Co-op</i>					
13-642621	632B6	Su 1-4	11500 TENNESSEE AVE #101	\$725,000	1+1.5 *
13-652553	632D7	Su 2-5	10930 NATIONAL #102	\$675,000	3+4 *
13-652347	632A5	Su 1-4	1738 FEDERAL AVE #9	\$635,000	2+3 *
WESTWOOD - CENTURY CITY <i>Single Family</i>					
13-647147	632C2	Su 1-4	10573 LE CONTE AVE	\$3,599,000	6+5 *
13-649749	632D3	Su 1-4	1841 BENEZIA AVE	\$1,755,000	5+4.5 *
13-652851	632D5	Su 1-4	10418 TENNESSEE AVE	\$799,000	2+1 *
13-644299	632D4	Su 1-4	2170 LINNINGTON AVE	\$749,000	3+2 *
WESTWOOD - CENTURY CITY <i>Condo / Co-op</i>					
12-623813	632C4	Su 1-4	1940 MANNING AVE #201	\$1,195,000	3+3.5 *
13-649755	632C4	Su 1-4	10617 EASTBORNE AVE #204	\$875,000	3+2.5 *
13-652003	632D4	Su 1-4	1821 FAIRBURN AVE #104	\$815,000	3+2.5 *
13-649863	632A2	Su 1-4	10966 STRATHMORE DR #10	\$749,000	2+2 *
13-652207	632C3	Su 1-4	10644 WILKINS AVE #102	\$689,000	2+2.5 *
WESTWOOD - CENTURY CITY <i>Lease</i>					
12-634581	632B1	Su 1-4	305 DALEHURST AVE	\$12,000	4+4 *
13-645133	632B5	Su 1-4	1830 KELTON AVE #1	\$3,000	3+3 *

SUNDAY		SAN FERNANDO VALLEY			
EAST VAN NUYS <i>Single Family</i>					
13-643177	532D7	Su 10-1	6219 ATOLL AVE	\$449,000	3+2 *
ENCINO <i>Single Family</i>					
12-641047	561C5	Su 1-4	4258 LOUISE AVE	\$1,695,000	4+4 *
NORTHRIDGE <i>Single Family</i>					
13-652821	480E6	Su 2-4	20124 VIA CELLINI	\$1,099,000	4+4 *
13-650927	531C1	Su 1-4	17049 CHASE ST	\$599,000	3+4 *
SHERMAN OAKS <i>Single Family</i>					
13-652615	562D2	Su 1-4	13232 MCCORMICK ST	\$745,000	2+2 *
VALLEY VILLAGE <i>Single Family</i>					
13-652587	562G1	Su 1-4	5629 BELLINGHAM AVE	\$649,900	3+2 *
WEST VAN NUYS <i>Single Family</i>					
13-644083	531G6	Su 1-4	6656 LANGDON AVE	\$679,000	4+3 *
WOODLAND HILLS <i>Condo / Co-op</i>					
13-652671	530B7	Su 1-4	21301 ERWIN ST #436	\$369,000	2+2 *

SUNDAY		OTHER AREAS			
AZUSA <i>Single Family</i>					
13-651645	568H4	Su 1-4	308 W DURANT ST	\$349,000	3+2 *
BURBANK <i>Single Family</i>					
13-650585	563C2	Su 1-4	911 N KENWOOD ST	\$649,800	3+2 *
GLENDALE <i>Single Family</i>					
13-650469	534G7	Su 1-4	1310 HILLSIDE DR	\$1,079,000	3+3 *
PALM DESERT NORTH <i>Condo / Co-op</i>					
13-652397PS	818F2	Su 12-3	1609 VIA SAN MARTINO	\$269,900	2+2 *
PALM DESERT NORTH <i>Residential Manufac-</i>					
13-644715PS	818G5	Su 11-1	74048 ANGELS CAMP RD	\$159,900	Priet p.20 *
PALM SPRINGS CENTRAL <i>Single Family</i>					
41451830PS	756D7	Su 11-3	280 CAMINO SUR	\$1,649,000	3+4 *
13-652487PS	756C6	Su 12-2	925 W PANORAMA RD	\$1,275,000	4+3 *
41460735PS	756D7	Su 12-2	700 PRESCOTT DR	\$999,000	3+4 *
13-652053PS	786G1	Su 12-2	595 N CERRITOS DR	\$489,000	3+2 *

NEW LISTINGS DIRECTORY					
13-650519PS	756F7	Su 1-3	1291 E SAN JACINTO WAY	\$399,000	3+2 *
PALM SPRINGS SOUTH END <i>Single Family</i>					
13-652489PS	786C3	Su 11-2	589 S LA MIRADA RD	\$1,425,000	3+4.5 *
13-649981PS	816F1	Su 12-2	1015 ANDREAS PALMS DR	\$990,000	4+4 *
13-651019PS	816F2	Su 11-2	64933 SARAGOSSA DR	\$799,000	4+4.5 *
13-648381PS	786F7	Su 11-2	2730 W KINGS RD	\$695,000	3+3.5 *
41463032PS	786F3	Su 12-3	683 DUNES CT	\$535,000	2+2 *
PALM SPRINGS SOUTH END <i>Condo / Co-op</i>					
13-648213PS	786G7	Su 12-3	2375 S TOLEDO AVE	\$599,000	3+2.5 *
ROLLING HILLS ESTATES <i>Single Family</i>					
13-651455	793H7	Su 1-4	28 ENCANTO DR	\$899,000	3+2 *
SAN PEDRO <i>Single Family</i>					
13-647639	823J5	Su 1-4	1447 W 2ND ST	\$409,000	3+2 *
12-636065	824B7	Su 1-4	2619 S KERCKHOFF AVE	\$354,000	2+2 *
TORRANCE <i>Single Family</i>					
13-643589	793D1	Su 1-4	22919 MADISON ST	\$669,000	3+2 *
OUT OF AREA <i>Single Family</i>					
13-649739	555B3	Su 1-4	5254 VIA CAPOTE	\$1,160,000	5+3 *
12-638099	797B3	Su 1-4	11152 ENTERPRISE DR	\$729,000	4+2 *
13-642693	99YX	Su 2-4	319 S SHERRIN AVE- LOUISVILLE	\$615,000	4+2.5 *
13-648251PS	756E5	Su 12-3	2108 GEORGE DR	\$589,000	4+3 *
13-651377PS	787C6	Su 12-3	2789 N JUNIPERO RD	\$459,000	3+2 *
13-644419	848G2	Su 12-4	74020 OLD PROSPECTOR TRL	\$399,000	4+2.5 *

NEW LISTINGS		WESTSIDE / LOS ANGELES			
BEL AIR - HOLMBY HILLS <i>Single Family</i>					
13-652621	591J5	10721 STRADELLA CT	\$5,995,000	4+4	310-273-3113 *
13-652827	591G3	2239 QUEENSBOROUGH LN	\$5,450,000	7+7.5	310-271-2229 *
13-652089	631J1	218 GLENROY PL	\$2,349,000	3+3	310-432-6400 *
13-652751	631J1	231 GLENROY PL	\$1,945,000	5+5	310-207-7080 *
13-652067	591J6	1103 ROSCOMARE RD	\$1,895,000	3+4	310-278-3311 *
13-651749	592B5	1314 N BEVERLY GLEN BLVD	\$1,195,000	3+3	310-273-3113 *
BEL AIR - HOLMBY HILLS <i>Condo / Co-op</i>					
13-651449	591H2	2385 ROSCOMARE RD #D14	\$545,000	2+2	619-398-3867 *
BEL AIR - HOLMBY HILLS <i>Lease</i>					
13-652535	591J4	1600 LINDAMERE PL	\$10,000	4+4	310-724-7100 *
13-651719	591H2	2270 STRADELLA RD	\$7,900	4+4	310-724-7100 *
BEVERLY CENTER-MIRACLE MILE <i>Single Family</i>					
13-651541	593A7	458 N FLORES ST	\$2,395,000	5+4	310-777-6200 *
13-652245	593D7	516 N DETROIT ST	\$949,000	5+3	310-461-0400 *
BEVERLY CENTER-MIRACLE MILE <i>Condo / Co-op</i>					
13-651757	632H1	100 S DOHENY DR #315	\$390,000	1+2	310-472-5139 *
BEVERLY CENTER-MIRACLE MILE <i>Income</i>					
13-651845	633A3	1156 S CRESCENT HEIGHTS BLVD	\$899,000		310-829-0629 *
BEVERLY CENTER-MIRACLE MILE <i>Lease</i>					
13-651941	632J1	8569 BURTON WAY #402	\$9,495	2+3.5	866-748-4982 *
13-651661	632J1	8569 BURTON WAY #409	\$7,995	2+2.5	866-748-4982 *
13-652119	632J1	8560 BURTON WAY #401	\$5,995	1+2.5	866-748-4982 *
13-652427	632H1	128 SWALL DR #PH7	\$4,500	2+3	310-432-6400 *
13-652431	632J3	811 S BEDFORD ST #305	\$3,950	3+3	323-263-7368 *
13-651473	593D7	501 N DETROIT ST	\$3,800	3+1.5	424-202-3200 *
13-651631	632J1	415 WILLAMAN DR #102	\$3,500	2+3	310-478-1835 *
13-651637	633C4	1221 BURNSIDE AVE	\$2,800	2+1	310-432-6400 *
13-652369	593D6	7116 WARING AVE	\$2,750	3+1	310-432-6400 *
BEVERLY HILLS <i>Single Family</i>					
13-651731	592D7	9925 SUNSET	\$7,799,000	5+7	310-273-3113 *
13-651989	632F1	626 N CAMDEN DR	\$6,395,000	6+4.5	310-273-3113 *
13-652549	632F3	447 S SPALDING DR	\$3,800,000	4+3	310-826-8200 *
13-652699	632H2	265 S CLARK DR	\$1,799,000	3+2	310-724-7100 *
13-652273	632J2	120 N LE DOUX RD	\$1,375,000	3+3	310-274-4000 *
BEVERLY HILLS <i>Condo / Co-op</i>					
13-651475	632H1	403 N PALM DR #1	\$1,585,000	3+3.5	310-432-6400 *
13-652611	592H7	458 N OAKHURST DR #104	\$748,000	2+2.5	310-273-3113 *
BEVERLY HILLS <i>Lease</i>					
13-652255	592G7	623 N ALTA DR	\$55,000	5+7	310-432-6400 *
13-652643	632E1	710 N RODEO DR	\$30,000	6+6	310-777-6200 *
13-652367	592G4	1145 MAYTOR PL	\$22,000	4+4	310-724-7100 *
13-652637	592D6	1106 SAN YSIDRO DR	\$20,000	5+6	310-276-6236 *
13-651459	632J2	161 N HAMEL DR	\$7,995	5+4	310-300-3333 *
13-651997	632F2	137 SPALDING DR #404	\$7,900	3+3	323-692-9900 *
13-652519	632G3	306 REEVES DR	\$6,500	2+2	310-820-2584 *
13-652145	632H1	430 OAKHURST DR #301	\$5,300	2+2.5	310-273-3113 *
13-652613	592H7	458 OAKHURST DR #104	\$3,450	2+2.5	310-273-3113 *
13-652073	632F2	9601 CHARLEVILLE #6	\$2,600	0+1	310-402-7779 *
13-651561	632G3	434 S CANON DR #502	\$2,450	1+2	310-623-1300 *

NEW LISTINGS DIRECTORY

NEW LISTINGS DIRECTORY										* THEMLS ^{PRO} ™ NEW LISTINGS			
IFC - INSIDE FRONT COVER, IBC - INSIDE BACK COVER, BC - BACK COVER													
13-651611	593H3	1928 N WESTERN AVE	\$1,198,000	4+3	310-829-0629	*	13-652295	704E3	746 E 91ST ST	\$224,900	2+1	310-671-4333	*
13-652483	594B2	4129 PARVA AVE	\$989,000	2+2	310-461-0400	*	13-651655	704F3	9022 HOOPER AVE	\$140,000	2+1	310-386-1313	*
13-652095	594B2	2216 N COMMONWEALTH AVE	\$899,000	3+2	323-665-1700	*	METROPOLITAN SOUTH			Lease			
13-651805	594B2	2303 RICHLAND AVE	\$789,000	3+2.75	323-671-1200	*	13-652393	7046	158 109TH ST	\$1,350	3+1	310-694-8992	*
13-651853	594D2	3781 VALLEYBRINK RD	\$629,000	2+1	323-665-1121	*	METROPOLITAN SOUTHWEST			Single Family			
13-651953	594E3	3013 GLENHURST AVE	\$474,500	2+3	310-305-8333	*	13-652113	703J4	9651 S HARVARD	\$339,975	4+3	310-623-1300	*
13-652773	594D1	3719 EDENHURST AVE	\$438,000	4+3	323-661-7818	*	13-651445	703G3	8910 HAAS AVE	\$319,900	2+1	323-258-9977	*
LOS FELIZ										Income			
13-652689	564C7	4106 GARDEN AVE	\$549,000		323-665-1700	*	13-652841	703J1	7314 DALTON AVE	\$249,900	2+1	310-487-3666	*
LOS FELIZ										Lease			
13-651833	594B2	2618 COMMONWEALTH AVE	\$8,800	3+3	323-671-1200	*	METROPOLITAN SOUTHWEST			Condo / Co-op			
13-652753	594E2	3250 GLENHURST AVE	\$3,500	3+2	323-665-1121	*	13-652809	704F7	1559 E 117TH ST	\$160,000	3+3	310-614-9078	*
MALIBU										Single Family			
13-652019	627B7	5941 PHILIP AVE	\$9,690,000	6+5	310-456-3638	*	METROPOLITAN SOUTHWEST			Income			
13-652185	629A7	23445 MALIBU COLONY RD	\$7,750,000	5+3	310-457-6550	*	13-652639	674B4	715 W 49TH ST	\$269,900		760-217-1979	*
13-652155	667F4	28981 CLIFFSIDE DR	\$4,995,000	3+3	310-456-3638	*	MID LOS ANGELES			Single Family			
13-651777	667H1	0 W WINDING WAY	\$4,675,000	4+4	310-457-6550	*	13-651977	634B7	1194 W 27TH ST	\$875,000	5+5	310-652-6285	*
13-651691	629J6	20474 ROCA CHICA DR	\$2,495,000	4+3.5	310-456-3638	*	13-652527	633B5	1614 ELLSMERE AVE	\$620,000	2+1	310-256-3038	*
13-651537	629F6	21559 PACIFIC COAST HWY	\$2,395,000	4+4	310-456-1171	*	13-651739	633J5	2123 CAMBRIDGE ST	\$499,999	4+3	310-305-8333	*
13-651821	628B7	6171 LATIGO CANYON RD	\$2,150,000	3+3	310-456-3638	*	13-652353	633G7	2261 W 28TH ST	\$389,000	3+2	818-432-1500	*
13-652569	667D1	5787 CALPINE DR	\$1,999,000	3+2.5	310-456-1511	*	MID LOS ANGELES			Income			
13-652423	628J6	3525 COAST VIEW DR	\$1,895,000	3+3	310-456-3638	*	13-652791	824B5	3 W 3RD ST #526 528	\$575,000		310-729-6050	*
13-652603	628D3	26237 FAIRSIDE RD	\$1,395,000	3+2	310-456-6431	*	MID-WILSHIRE			Single Family			
13-651439	667C1	29921 HARVESTER RD	\$1,255,000	4+3	310-441-5678	*	13-652649	634A1	141 N BERENDO ST	\$609,900	4+3	213-385-4989	*
MALIBU										Land			
13-652627	629E6	21612 RAMBLA VIS	\$1,000,000		424-203-1800	*	13-651973	633J4	1230 IROLO ST	\$450,000	3+2	213-674-0791	*
MALIBU										Lease			
13-652661	629E6	3909 VILLA COSTERA	\$19,500	4+5	760-969-1000	*	MID-WILSHIRE			Condo / Co-op			
13-651493	629F6	3833 PASEO HIDALGO ST	\$11,500	3+2.5	888-206-4630	*	13-652355	633G3	871 CRENSHAW #204	\$595,000	3+2	213-760-4455	*
13-652583	627J6	27450 CALICUT RD	\$8,950	4+3	310-456-6431	*	13-652525	593H7	601 N SERRANO AVE #305	\$480,000	2+2	213-385-4989	*
13-651621	628J7	23929 DE VILLE WAY	\$7,500	3+3	310-457-6550	*	13-652141	634B4	2321 W 10TH ST #206	\$385,000	2+2	213-385-4989	*
13-651763	628H6	3601 VISTA PACIFICA #17	\$5,900	3+3.5	310-456-3638	*	13-652035	633H3	3810 WILSHIRE #903	\$360,000	1+1	213-385-0090	*
13-652389	667E2	6487 CAVALLERI RD #428E	\$5,700	3+3	310-456-4843	*	MID-WILSHIRE			Income			
13-652607	628D3	26237 FAIRSIDE RD	\$5,500	3+2	310-456-6431	*	13-651961	633J4	1222 IROLO ST	\$590,000		213-674-0791	*
13-652391	667E2	6487 CAVALLERI RD #121E	\$5,250	3+3	310-456-4843	*	MID-WILSHIRE			Lease			
13-652683	667F2	6435 ZUMIREZ DR #5	\$4,300	2+2.5	310-456-3638	*	13-652199	633B3	1079 OGDEN DR	\$4,000	3+2	310-274-4000	*
13-652833	667F2	6455 KANAN DUME RD	\$2,300	2+2	310-456-3638	*	13-652045	633H3	3810 WILSHIRE #304	\$2,500	2+2	213-385-0090	*
MALIBU										Residential Manufactured/Mobile Home			
13-652029	667G7	29500 HEATHERCLIFF RD #191	\$755,000	2+2	310-456-5621	*	13-652765	633H3	3810 WILSHIRE #2209	\$2,200	1+1	213-385-4989	*
13-651751	667D4	1 PARADISE COVE RD	\$495,000	2+1	310-456-5621	*	13-652133	633H3	3810 WILSHIRE #1606	\$2,100	1+1	213-382-8500	*
MALIBU BEACH										Single Family			
13-652051	626D6	32852 PACIFIC COAST HWY	\$22,500,000	4+4.5	310-622-4466	*	13-652379	633H3	3810 WILSHIRE #1610	\$2,000	1+1	213-674-0791	*
13-652009	628F7	24864 MALIBU RD	\$8,000,000	3+1	310-457-6550	*	13-652811	634B1	176 S VIRGIL AVE #204	\$2,000	2+2	323-848-4928	*
13-652597	628H7	24016 MALIBU RD	\$4,750,000	3+3	310-457-6550	*	13-651585	634A1	234 NEW HAMPSHIRE AVE	\$1,700	2+2	213-637-1112	*
13-651871	630B6	19214 PACIFIC COAST HWY	\$2,600,000	3+3	310-456-1171	*	13-651577	634A1	232 N NEW HAMPSHIRE AVE	\$1,500	2+1	213-637-1112	*
13-651789	630A6	19846 PACIFIC COAST HWY	\$2,500,000	4+2	310-387-6803	*	MOUNT WASHINGTON			Income			
MALIBU BEACH										Lease			
13-652703	629A7	23402 MALIBU COLONY RD	\$250,000	5+4	310-456-6431	*	13-652565	595B4	4510 N FIGUEROA ST #4	\$580,000		323-644-9081	*
13-651435	628H7	24444 MALIBU RD	\$80,000	3+5	310-456-3638	*	13-652405	595A2	904 FARNAM ST	\$349,000		323-223-3881	*
13-651587	667G2	6704 ZUMIREZ	\$24,950	5+7.5	310-454-0080	*	PACIFIC PALISADES			Single Family			
13-651501	629E6	21938 PACIFIC COAST HWY	\$20,000	5+4.5	310-271-2229	*	13-652735	630G1	16865 CALLE BELLEVISTA	\$13,900,000	7+8	310-481-6262	*
13-652475	629G6	20826 PACIFIC COAST HWY	\$17,500	3+2	310-456-5621	*	13-651877	631B6	444 CHAUTAUQUA	\$7,950,000	5+5	310-454-0080	*
13-652697	626H7	31641 SEA LEVEL DR	\$6,500	3+2	310-456-3655	*	13-652149	631C5	13926 W SUNSET	\$6,295,000	6+9	310-777-6200	*
13-652849	625F5	11840 S BEACH CLUB WAY #A	\$4,500	2+2.5	818-889-6089	*	13-651771	631C6	545 AMALFI DR	\$4,795,000	5+5.5	310-207-7080	*
13-652317	629B6	22766 PACIFIC COAST HWY #J	\$3,200	1+1	310-922-2890	*	13-652625	631A4	15102 BESTOR	\$4,495,000	5+7	310-278-3311	*
13-652313	629B6	22766 PACIFIC COAST HWY #L	\$2,800	1+1	310-922-2890	*	13-651839	631D3	1630 AMALFI DR	\$4,200,000	4+3.5	310-454-1111	*
MARINA DEL REY										Single Family			
13-652629	702A2	122 WESTWIND MALL	\$2,350,000	4+5.5	310-820-0195	*	13-652759	631D3	1505 SORRENTO DR	\$3,750,000	4+3	310-481-6262	*
MARINA DEL REY										Condo / Co-op			
13-652733	701J1	1 JIB ST #PH B	\$2,200,000	3+3	310-703-1900	*	13-652139	631A6	601 SWARTHMORE AVE	\$3,390,000	5+5.5	310-456-3638	*
13-652097	701J2	18 UNION JACK ST #101	\$1,100,000	2+2	310-820-0195	*	13-651791	630H3	1423 FLORESTA PL	\$3,200,000	5+4.5	310-454-1111	*
13-652523	672B6	13600 MARINA POINTE DR #307	\$799,000	2+3	310-305-8333	*	13-651451	630H5	622 N LAS CASAS AVE	\$2,895,000	5+4.5	310-273-3113	*
13-652023	672C7	4778 LA VILLA MARINA #M	\$620,000	3+2.5	310-301-3500	*	13-652585	631B6	531 CHAPALA DR	\$2,485,000	2+2	310-454-1111	*
13-652601	670A6	4316 MARINA CITY #229	\$449,900	2+2	310-822-8910	*	13-652837	631A5	767 HAVERFORD AVE	\$2,395,000	4+4.5	310-577-5300	*
13-652667	672A6	4337 MARINA CITY DR #545	\$329,000	1+1	310-278-3311	*	13-652159	630H5	16571 CHATTANOOGA PL	\$2,150,000	4+3.5	310-230-3700	*
MARINA DEL REY										Lease			
13-652041	672B6	13700 MARINA POINTE DR #1223	\$5,100	2+2	310-577-0101	*	13-652115	630H5	629 N LAS CASAS AVE	\$1,895,000	3+2	310-230-3700	*
13-652503	672B6	13650 MARINA POINTE DR #1405	\$4,750	2+2	310-305-8333	*	13-652137	630H5	16920 DULCE YNEZ LN	\$1,675,000	4+3	310-230-3700	*
13-652013	672B5	4080 GLENCOE AVE #303	\$4,500	2+2	424-202-3200	*	13-652635	630F6	17734 PORTO MARINA WAY	\$1,485,000	2+2	310-205-0305	*
13-652297	672A6	4335 MARINA CITY DR #1044	\$4,000	2+2	310-301-3500	*	PACIFIC PALISADES			Condo / Co-op			
13-651583	672B5	4080 GLENCOE AVE #104	\$3,495	2+2	310-301-3500	*	13-651725	590F7	1593 MICHAEL LN	\$769,000	2+2.5	310-230-3700	*
METROPOLITAN										Single Family			
13-651923	734D2	13342 TOWNE AVE	\$225,000	3+1	213-273-8440	*	PACIFIC PALISADES			Land			
METROPOLITAN SOUTH										Single Family			
13-652181	704G6	1774 E 111TH PL	\$239,900	3+3.5	310-826-8200	*	13-652593	631B6	0 FRONTERA	\$2,395,000	Land	310-454-1111	*
METROPOLITAN SOUTH										Lease			
13-652685	631B4	1155 KAGAWA ST	\$14,000	4+4	310-205-0305	*	PACIFIC PALISADES			Single Family			
13-652505	630E5	18128 KINGSFORD DR	\$6,500	3+2.5	310-873-4100	*	13-652685	630G6	17368 SUNSET #405	\$2,995	1+1	310-456-6771	*
13-652663	630G6	17368 SUNSET #405	\$2,995	1+1	310-456-6771	*	13-652653	630G6	17352 SUNSET #404	\$2,495	1+1	310-454-1111	*
PALMS - MAR VISTA										Single Family			
13-651869	672C3	11942 CHARNOCK RD	\$1,388,000	3+2.75	310-391-6346	*	13-651917	672A3	13213 ROSE AVE	\$767,700	3+1.5	310-452-1061	*
13-651991	672B2	12426 STANWOOD PL	\$1,195,000	4+3	310-482-2200	*	13-651879	672B3	12613 WOODBINE ST	\$750,000	3+1	310-482-2200	*
13-651893	672B2	12542 ROSE AVE	\$799,000	4+2	310-858-6800	*	13-652055	672C5	4372 NEOSHO AVE	\$729,000	2+1.75	310-301-2323	*
13-651917	672A3	13213 ROSE AVE											

* THEMLS PRO™ NEW LISTINGS							NEW LISTINGS DIRECTORY					IFC - INSIDE FRONT COVER, IBC - INSIDE BACK COVER, BC - BACK COVER	
PALMS - MAR VISTA							SUNSET STRIP - HOLLYWOOD HILLS WEST					Single Family	
13-652691	672B3	3544 S CENTINELA AVE #102	\$459,000	2+2	310-777-6200	*	13-652017	592H4	1616 RISING GLEN RD	\$6,850,000	5+5	310-724-7000	*
13-651657	672E1	3649 GLENDON AVE #102	\$398,900	2+2	310-305-8333	*	13-652573	592J4	1901 SUNSET PLAZA DR	\$6,595,000	5+6	424-202-3200	*
13-651899	672D4	4125 INGLEWOOD #1	\$350,000	2+1.75	424-203-1800	*	13-652037	592J5	1286 SUNSET PLAZA DR	\$4,295,000	5+5	310-777-6200	*
PALMS - MAR VISTA							SUNSET STRIP - HOLLYWOOD HILLS WEST					Income	
13-651531	672F1	3680 KEYSTONE AVE	\$4,200,000		310-623-1300	*	13-652011	592H4	1814 N DOHENY DR	\$2,850,000	3+3	310-724-7000	*
PARK HILLS HEIGHTS							SUNSET STRIP - HOLLYWOOD HILLS WEST					Income	
13-652407	673A5	5644 S HOLT AVE	\$725,000	4+3	310-482-2500	*	13-652835	592H5	8930 ST IVES DR	\$2,595,000	4+3	424-230-3700	*
13-652409	673A6	6005 S GARTH AVE	\$599,000	3+3	310-256-3038	*	13-652111	593C2	2447 SOLAR DR	\$2,395,000	3+3	310-278-3311	*
13-652059	673E1	3425 BUCKINGHAM RD	\$320,000	3+1	310-836-8321	*	13-651515	593D3	7020 LA PRESA DR	\$2,355,000	4+4	310-458-0091	*
PARK HILLS HEIGHTS							SUNSET STRIP - HOLLYWOOD HILLS WEST					Income	
13-652731	673E3	3740 W SANTA ROSALIA DR	\$259,500	1+1	323-314-4117	*	13-652021	592J4	1618 SUNSET PLAZA DR	\$1,899,000	4+3.5	310-278-9470	*
PARK HILLS HEIGHTS							SUNSET STRIP - HOLLYWOOD HILLS WEST					Income	
13-651603	673H2	1647 W 38TH PL	\$350,900		310-970-4000	*	13-652779	592J5	1355 MILLER PL	\$1,899,000	3+3	424-230-3700	*
PARK HILLS HEIGHTS							SUNSET STRIP - HOLLYWOOD HILLS WEST					Income	
13-651707	673B6	6103 FAIRFAX AVE	\$2,500	3+2	310-215-8200	*	13-652275	593D3	2100 OUTPOST DR	\$1,850,000	3+3	310-278-9470	*
PLAYA DEL REY							SUNSET STRIP - HOLLYWOOD HILLS WEST					Income	
13-652187	702A3	16 65TH AVE	\$1,400,000	3+2	310-301-3500	*	13-651759	592H2	8811 SKYLINE DR	\$799,000	2+1	310-205-0305	*
13-652279	702D2	7734 W 82ND ST	\$1,275,000	3+2.5	310-322-3268	*	13-652209	563D7	3232 BENNETT DR	\$695,000	2+2	310-724-7100	*
13-652847	702B3	413 TALBERT ST	\$699,000	3+2	424-203-1800	*	SUNSET STRIP - HOLLYWOOD HILLS WEST					Condo / Co-op	
PLAYA DEL REY							SUNSET STRIP - HOLLYWOOD HILLS WEST					Condo / Co-op	
13-652099	702C3	8160 MANITOBA ST #103	\$459,000	2+2	310-777-6200	*	13-652709	592G6	9255 DOHENY RD #1202	\$2,795,000	2+2.5	310-278-3311	*
13-652291	702C3	8707 FALMOUTH AVE #115	\$349,000	1+1	310-577-5300	*	13-652545	592J5	1155 N LA CIENEGA BLVD #714	\$620,000	2+2	855-800-7767	*
13-652289	702C3	8640 GULANA AVE #J3011	\$250,000	1+1	310-642-7653	*	13-651957	593B4	1615 N LAUREL AVE #214	\$449,000	1+1	323-300-1000	*
PLAYA DEL REY							SUNSET STRIP - HOLLYWOOD HILLS WEST					Income	
13-651733	702A3	117 REES ST	\$2,950	2+1.5	310-305-8000	*	13-651617	593C4	7270 HILLSIDE AVE #305	\$399,000	1+2	310-461-0400	*
PLAYA VISTA							SUNSET STRIP - HOLLYWOOD HILLS WEST					Income	
13-651889	702D1	13070 DISCOVERY CRK	\$1,588,500	4+4	310-301-3500	*	SUNSET STRIP - HOLLYWOOD HILLS WEST					Land	
PLAYA VISTA							SUNSET STRIP - HOLLYWOOD HILLS WEST					Land	
13-651883	702D1	12920 W RUNWAY RD #330	\$795,000	3+2	310-481-6262	*	13-652557	593A3	2279 LAUREL CANYON BLVD	\$2,700,000	Land	323-850-7626	*
13-652645	702D1	12963 RUNWAY RD #103	\$599,000	2+2	310-837-7139	*	SUNSET STRIP - HOLLYWOOD HILLS WEST					Lease	
SANTA MONICA							SUNSET STRIP - HOLLYWOOD HILLS WEST					Lease	
13-651481	631D6	337 12TH ST	\$3,875,000	5+4.5	310-382-8500	*	13-652307	593D3	2321 CASTILIAN DR	\$30,000	5+7	310-770-1847	*
SANTA MONICA							SUNSET STRIP - HOLLYWOOD HILLS WEST					Lease	
13-651697	631F7	1118 21ST ST #104	\$1,552,000	3+2.5	310-482-2200	*	13-651525	592H4	9219 ROBIN DR	\$15,500	5+4	310-724-7100	*
13-652365	631F6	930 20TH ST #3	\$1,249,000	2+2.5	310-402-5593	*	13-651675	592G5	1417 BLUEBIRD AVE	\$12,000	4+4	310-777-6200	*
13-652173	631G6	1217 YALE ST #110	\$929,000	2+2.5	310-230-3700	p.20	13-652261	593A2	7962 OCEANUS DR	\$11,300	5+5	310-652-6285	*
13-651901	631D7	901 10TH ST #310	\$768,000	2+2	310-724-7000	*	13-651491	593A1	2678 WOODSTOCK RD	\$10,000	3+2	310-432-6400	*
13-651825	671D1	1012 7TH ST #15	\$599,000	2+2	310-396-2600	*	13-651995	593B4	1747 NICHOLS CANYON RD	\$9,250	2+3	310-461-0400	*
13-652529	631G6	1233 BERKELEY ST #6	\$499,000	2+2	310-829-3939	*	13-651677	593A4	8300 GRAND VIEW DR	\$9,000	6+5	310-247-1131	*
13-652079	671C1	201 OCEAN AVE #1610P	\$425,000	2+2	310-474-5808	*	13-652717	592H5	8787 SHOREHAM DR #705/706	\$8,900	1+2	323-665-1700	*
SANTA MONICA							TOPANGA					Land	
13-652757	631C7	242 MABERY RD	\$35,000	4+6	310-275-1000	*	13-651709	592J5	1442 BELFAST DR	\$8,000	3+3	323-462-6262	*
13-652131	631C7	587 ENTRADA DR	\$14,997	4+6	310-623-1300	*	13-651775	593B4	1559 GENESEE AVE	\$8,000	4+3	310-623-1300	*
13-652033	671G4	2807 3RD ST #1	\$9,800	2+3	310-460-2525	*	13-651673	593E3	2117 ROCKLEDGE RD	\$6,900	5+3	323-913-1443	*
13-651545	674F4	236 BEACH ST	\$6,600	2+1.5	424-203-1800	*	13-651743	593A1	2808 LAUREL CANYON PL	\$3,150	2+1	424-202-3200	*
13-651609	671F4	140 OCEAN PARK BLVD #530	\$5,800	2+2	310-820-0195	*	VENICE					Single Family	
13-652175	671E1	808 WASHINGTON AVE	\$5,350	2+2.5	310-481-6262	*	13-651487	671G6	18 HORIZON AVE	\$1,750,000	3+2.5	310-907-6517	*
13-651809	631F7	1228 21ST ST #A	\$4,395	2+2.5	310-458-0091	*	13-651921	634C5	824 VENICE	\$1,350,000	3+2.5	310-907-6517	*
13-651589	671G3	1211 PEARL ST	\$3,850	3+2	424-202-3200	*	13-651737	671H7	32 30TH AVE	\$1,250,000	2+2	310-820-0195	*
13-651795	671G3	831 PACIFIC ST #2	\$3,400	2+3	310-820-0195	*	13-651509	671J4	963 INDIANA AVE	\$1,195,000	3+2	424-202-3200	*
13-651635	631E7	947 18TH ST #5	\$2,995	2+2	310-828-5509	*	13-652211	671J4	1016 INDIANA AVE	\$950,000	3+2	310-826-8200	*
13-652715	631D7	815 10TH ST #D	\$2,975	2+1.5	310-820-0195	*	13-652461	671J5	1064 NOWITA PL	\$899,000	2+1	310-273-3113	*
13-652659	631G6	2820 ARIZONA AVE #3	\$2,100	1+1	310-454-0080	*	13-651443	671J4	2026 PENMAR AVE	\$879,000	3+2.5	310-482-2200	*
13-652575	671D1	828 LINCOLN BLVD #1	\$1,990	1+1	310-278-9470	*	13-652129	671H4	819 COMMONWEALTH AVE	\$850,000	2+2	310-459-8191	*
SILVER LAKE - ECHO PARK							VENICE					Income	
13-652561	634E1	1039 W KENSINGTON RD	\$995,000	5+3	626-792-4420	*	13-651669	671H6	427 GRAND BLVD	\$1,950,000		310-827-0587	*
13-652411	594E6	1864 LEMOYNE ST	\$849,000	3+2	626-792-4420	*	VENICE					Lease	
13-652429	634D1	1843 SANTA YNEZ ST	\$799,000	3+2	323-300-1000	*	13-651875	671J5	803 BOCCACCIO	\$7,200	2+2	310-820-6651	*
13-651721	594C5	3637 EFFIE ST	\$787,000	2+1	323-665-1700	*	13-651573	671J6	2341 CLOY AVE	\$7,050	2+2	424-203-1800	*
13-652509	594D5	1855 REDESDALE AVE	\$775,000	3+1.5	323-661-2449	*	13-652581	672A5	2615 NAPLES AVE	\$5,900	2+2	310-820-0195	*
13-652555	594D6	1434 ANGELUS AVE	\$540,000	2+1	323-906-8383	*	WEST HOLLYWOOD VICINITY					Single Family	
13-652641	6341	141 N PARK VIEW ST	\$469,900	3+3	310-617-0606	*	13-651599	592J7	8745 ROSEWOOD AVE	\$2,499,000	3+3.5	310-623-1300	*
13-651765	594E6	1651 LAKE SHORE AVE	\$469,000	2+1	909-973-5959	*	WEST HOLLYWOOD VICINITY					Condo / Co-op	
13-652473	594D6	1309 N BENTON WAY	\$465,000	2+1	323-665-1700	*	13-652657	592J6	1100 ALTA LOMA RD #906	\$995,000	1+2	818-757-4567	*
SILVER LAKE - ECHO PARK							WEST HOLLYWOOD VICINITY					Condo / Co-op	
13-651483	594B6	4225 LOCKWOOD AVE	\$1,075,000		213-381-3188	*	13-652707	592J5	8455 FOUNTAIN AVE #208	\$699,000	2+2	310-205-0305	*
13-651523	594F6	1873 MORTON AVE	\$749,000		213-250-4404	*	13-651689	593A5	1121 N OLIVE DR #113	\$599,000	2+2	310-278-3311	*
13-652221	634E2	1363 COLTON ST	\$499,000		310-278-9470	*	13-652437	592J6	1131 ALTA LOMA RD #417	\$539,000	1+1.5	310-777-7800	*
SILVER LAKE - ECHO PARK							WEST HOLLYWOOD VICINITY					Income	
13-651489	594C5	1613 N EASTERLY TER	\$210,000	Land	323-665-1121	*	13-651851	593C6	1040 N GARDNER ST #4	\$395,000	2+2.5	310-652-6285	*
SILVER LAKE - ECHO PARK							WEST HOLLYWOOD VICINITY					Lease	
13-651887	594B6	811 MALTMAN AVE	\$4,000	3+2	310-788-0700	*	13-651633	593A6	1018 HAVENHURST DR	\$1,599,000		310-488-2342	*
13-652471	594F6	1454 AVON TER	\$3,200	2+1	805-529-6626	*	WEST L.A.					Single Family	
							13-651979	672B1	2716 STONER AVE	\$995,000	3+3	310-482-2200	*
							13-652693	632D7	2957 MIDVALE AVE	\$799,950	3+2	310-826-8200	*
							13-651703	632D7	2828 MILITARY AVE	\$649,000	3+2	310-842-8234	*
							13-652303	631J7	2229 WELLESLEY AVE	\$620,000	2+1	760-804-8200	*

NEW LISTINGS DIRECTORY

IFC - INSIDE FRONT COVER, IBC - INSIDE BACK COVER, BC - BACK COVER

NEW LISTINGS DIRECTORY

* THEMLS^{PRO}™ NEW LISTINGS

WEST L.A.		Income		Lease	
13-652553	632D7	10930 NATIONAL #102	\$675,000	3+4	310-478-1835 *
13-652347	632A5	1738 FEDERAL AVE #9	\$635,000	2+3	310-652-6285 *
13-652377	631J5	1417 S WESTGATE AVE #307	\$525,000	2+3	310-482-2500 *
13-652419	632C6	2320 S BENTLEY AVE #201	\$504,000	2+2	562-622-7275 *
WEST L.A.		Income		Lease	
13-652591	632A5	1771 BELOIT AVE	\$5,650,000		213-817-1000 *
WEST L.A.		Income		Lease	
13-652755	631J5	11711 OHIO AVE #311	\$3,795	3+3	310-473-3000 *
13-652633	631H6	1564 WELLESLEY AVE	\$2,000	1+1	310-454-1111 *
WESTCHESTER		Income		Lease	
13-651693	703A1	6925 KNOWLTON PL	\$549,999	3+2	310-671-8271 *
WESTWOOD - CENTURY CITY		Income		Lease	
13-652085	632B5	1907 KELTON AVE	\$1,329,000	4+3.5	310-858-6800 *
13-651905	632C5	2116 MIDVALE AVE	\$1,300,000	3+2	310-278-3311 *
13-652071	632D4	2130 HOLMBY AVE	\$985,000	2+2	310-312-4840 *
13-652851	632D5	10418 TENNESSEE AVE	\$799,000	2+1	424-202-3200 *
WESTWOOD - CENTURY CITY		Income		Lease	
13-652065	632E4	2179 CENTURY WOODS WAY	\$1,595,000	2+2.5	310-777-6200 *
13-652171	632B3	10750 WILSHIRE #1802	\$1,550,000	2+3	310-278-3311 *
13-652003	632D4	1821 FAIRBURN AVE #104	\$815,000	3+2.5	310-481-6262 *
13-651595	632D4	2010 S BEVERLY GLEN #102	\$799,000	3+3.5	424-202-3200 *
13-651797	632C2	10433 WILSHIRE BLVD. #1005/1006	\$799,000	2+2.5	310-724-7100 *
13-652031	632B6	2230 S BENTLEY AVE #201	\$749,000	2+2	310-724-7000 *
13-652207	632C3	10644 WILKINS AVE #102	\$689,000	2+2.5	310-829-0629 *
13-652727	632C4	1823 MANNING AVE #303	\$679,000	2+2.5	310-777-6200 *
13-651985	632B4	1434 GREENFIELD AVE #204	\$577,500	2+2	310-432-6400 *
13-652135	6323	10633 KINNARD AVE #12	\$545,000	2+2	661-964-1600 *
13-651729	632B5	1872 MIDVALE AVE #108	\$529,900	2+2	818-783-7721 *
13-651701	632C3	10676 WILKINS AVE #207	\$510,000	2+2	310-482-2500 *
13-651715	632C2	10450 WILSHIRE #10H	\$485,000	2+2	310-272-8002 *
13-651781	632B4	1440 VETERAN AVE #224	\$349,000	1+1	310-577-5300 *
13-652001	632B5	1849 GREENFIELD AVE #101	\$289,000	1+1	760-807-2180 *
WESTWOOD - CENTURY CITY		Income		Lease	
13-652589	632C4	1826 OVERLAND AVE	\$2,950,000		213-817-1000 *
WESTWOOD - CENTURY CITY		Income		Lease	
13-651695	632B3	10800 WILSHIRE BLVD #602	\$9,000	2+2.5	310-273-3113 *
13-652763	632B3	1045 MANNING AVE	\$8,995	4+4.5	310-777-7800 *
13-652443	632C3	10560 WILSHIRE #1404	\$7,000	2+3	310-432-6400 *
13-652543	632A4	1545 BENTLEY AVE #401	\$4,900	3+3.5	310-477-3192 *
13-652665	632C3	1551 MANNING AVE #203	\$4,200	2+3	310-777-6200 *
13-652491	632E3	2102 CENTURY PARK LN #309	\$3,850	2+2	310-482-2200 *
13-652363	632E5	10389 ALMAYO AVE	\$3,450	2+2	310-724-7100 *
13-652103	632C3	10590 WILSHIRE #704	\$3,250	2+2	310-829-3939 *
13-652655	632B3	10751 WILSHIRE #904	\$2,500	1+2	310-432-6400 *
13-652749	632B3	969 HILGARD AVE #707	\$2,400	2+1	310-829-0629 *

NEW LISTINGS

SAN FERNANDO VALLEY

AGOURA		Income		Lease	
13-652577	588A1	29435 MALIBU VIEW CT	\$3,200,000	6+6.5	310-305-8333 *
13-651943	587G3	2524 SIERRA CREEK RD	\$869,000	3+2.5	310-264-2225 *
AGOURA		Income		Lease	
13-652375	558B3	28940 TIMBERLANE ST	\$2,900	4+2	310-779-9500 *
CALABASAS		Income		Lease	
13-652647	559B7	3905 PRADO DEL TRIGO	\$2,139,000	5+6	310-432-6400 *
CANOGA PARK		Income		Lease	
13-651937	530C2	20933 LANARK ST	\$2,200	3+2	310-924-3130 *
ENCINO		Income		Lease	
13-652179	561D4	4533 ESTRONDO DR	\$5,995,000	7+8.75	310-273-3113 *
13-652789	561E6	3810 DIAMANTE PL	\$1,169,000	4+4	213-637-1112 *
GRANADA HILLS		Income		Lease	
13-651623	501F2	15957 SAN FERNANDO MISSION	\$349,900	2+2	323-850-5540 *
MOORPARK		Income		Lease	
13-651819	475F7	8860 STOCKTON RD	\$6,900,000	2+2	310-456-3638 *
NORTH HOLLYWOOD		Income		Lease	
13-651911	563B2	5326 CARTWRIGHT AVE	\$650,000	3+2	818-761-7222 *
13-651915	563B2	5334 CARTWRIGHT AVE	\$650,000	2+1	818-761-7222 *
13-651919	563B2	5322 CARTWRIGHT AVE	\$650,000	2+1	818-761-7222 *
13-652351	563B2	5314 CARTWRIGHT AVE	\$650,000	6+4	818-761-7222 *
13-652825	532G7	6329 BEN AVE	\$499,000	4+2	818-990-8700 *
13-652215	563A1	5653 CASE AVE	\$389,000	3+2	310-482-2500 *
13-652563	533A7	6043 ENSIGN AVE	\$261,000	2+1	818-531-4323 *
NORTH HOLLYWOOD		Income		Lease	
13-651663	532H6	6738 IRVINE AVE	\$399,000		310-641-3383 *
NORTH HOLLYWOOD		Income		Lease	
13-652319	563A1	5653 CASE AVE	\$2,500	3+2	310-482-2500 *

13-652747	5623	11230 PEACH GROVE ST #305	\$2,295	2+3	323-851-5512 *
NORTHRIDGE		Income		Lease	
13-652821	480E6	20124 VIA CELLINI	\$1,099,000	4+4	310-536-8887 *
NORTHRIDGE		Income		Lease	
13-652329	531B3	17458 STRATHERN ST	\$2,500	3+2	323-451-2081 *
PANORAMA CITY		Income		Lease	
13-652075	502A7	9058 SYLMAR AVE	\$220,000	3+3	310-869-6605 *
SHERMAN OAKS		Income		Lease	
13-651679	562A7	3539 BEVERLY RIDGE DR	\$1,599,000	4+4	818-788-5400 *
13-651885	562B5	13906 DAVANA TER	\$1,499,900	5+4.75	818-783-7721 *
13-651865	562C2	13470 WEDDINGTON ST	\$799,000	4+3	424-230-3700 *
13-652157	561J3	14725 VALLEYHEART DR	\$785,000	4+3.5	310-207-7080 *
13-652615	562D2	13232 MCCORMICK ST	\$745,000	2+2	818-783-7721 *
13-651735	562A6	3701 OAKFIELD DR	\$699,000	2+2	310-273-3113 *
SHERMAN OAKS		Income		Lease	
13-651615	562C4	4477 WOODMAN AVE #304	\$474,900	2+2	760-969-1000 *
13-652795	561H3	15207 MAGNOLIA BLVD #228	\$374,999	2+2	310-826-8200 *
13-651627	562C4	4477 WOODMAN AVE #314	\$363,000	2+2	310-482-2200 *
13-652739	562B4	4487 COLBATH AVE #306	\$299,000	2+2	310-777-7800 *
SHERMAN OAKS		Income		Lease	
13-652769	562B5	3971 MURIETTA AVE	\$4,995	2+3	310-474-1013 *
SIMI VALLEY		Income		Lease	
13-651529	497H3	1378 PATRICIA AVE	\$580,000	2+1	818-403-5165 *
STUDIO CITY		Income		Lease	
13-652321	562H6	11694 PICTURESQUE DR	\$1,175,000	3+3	310-709-1242 *
13-651745	562J6	11411 SUNSHINE TER	\$824,000	3+2	310-724-7100 *
STUDIO CITY		Income		Lease	
13-652203	562H6	11815 LAURELWOOD DR #18	\$585,750	2+2	323-851-5512 *
13-651835	562H5	4353 COLFAX AVE #30	\$325,000	1+1	310-454-0080 *
STUDIO CITY		Income		Lease	
13-652047	562G5	12044 HOFFMAN ST #203	\$3,750	3+2.5	818-755-4556 *
SYLMAR		Income		Lease	
13-652785	482D5	12625 GLADSTONE AVE	\$265,000	4+2	818-239-3500 *
TARZANA		Income		Lease	
13-651503	560F3	4936 CALVIN AVE	\$1,090,000	4+4	310-432-6400 *
13-652701	530H7	6120 TOPEKA DR	\$499,000	3+2.5	818-380-5100 *
THOUSAND OAKS		Income		Lease	
13-652725	526J2	3218 PROVENCE PL	\$769,900	4+3.5	310-469-0500 *
TOLUCA LAKE		Income		Lease	
13-652831	563B4	4547 STROHM AVE	\$700,000	Land	310-557-1900 *
VALLEY VILLAGE		Income		Lease	
13-652057	562J4	4634 KRAFT AVE	\$1,050,000	4+3	818-706-0236 *
13-651847	562E3	5119 GOODLAND AVE	\$875,000	3+4	818-359-0420 *
13-652587	562G1	5629 BELLINGHAM AVE	\$649,900	3+2	310-652-6285 *
VALLEY VILLAGE		Income		Lease	
13-652435	562G2	11909 WEDDINGTON ST #204	\$320,000	2+2	818-981-7799 *
WINNETKA		Income		Lease	
13-652339	530D6	20260 MOBILE ST	\$2,395	4+2	323-451-2081 *
WOODLAND HILLS		Income		Lease	
13-651967	559G3	5000 ABBEVILLE AVE	\$629,000	3+2	424-245-8438 *
WOODLAND HILLS		Income		Lease	
13-652671	530B7	21301 ERWIN ST #436	\$369,000	2+2	818-783-7721 *
WOODLAND HILLS		Income		Lease	
13-652399	560B2	21400 BURBANK #301	\$2,099	2+2	323-599-0101 *

NEW LISTINGS

OTHER AREAS

ALHAMBRA		Income		Lease	
13-652511	596C3	300 N GRANADA AVE	\$980,000	3+2	310-551-0660 *
ALTADENA		Income		Lease	
13-651667	535H5	137 W HARRIET ST	\$359,818	2+1	310-402-5593 *
ALTADENA		Income		Lease	
13-651727	535J6	2344 GARFIELD AVE	\$2,550	3+2	310-291-7201 *
AZUSA		Income		Lease	
13-651645	568H4	308 W DURANT ST	\$349,000	3+2	310-279-9644 *
BELLFLOWER		Income		Lease	
13-652467	736D3	10322 MAPLEDALE ST	\$2,400	3+2	323-451-2081 *
BURBANK		Income		Lease	
13-651975	563H2	348 W ELM AVE	\$474,000	2+1	310-373-7222 *
BURBANK		Income		Lease	
13-652517	533H	630 E OLIVE AVE #302	\$419,000	3+2	213-738-7776 *
CATHEDRAL CITY SOUTH		Income		Lease	
13-652675	787G7	69811 VAN GOGH RD	\$559,000	3+3.5	760-327-3990 *
13-652737	787F6	69314 SERENITY RD	\$292,900	2+2	760-323-8311 *
COMPTON		Income		Lease	
13-652417	735A4	223 S WILLOW AVE	\$229,000	2+1	909-910-0855 *
13-651897	734F5	1529 W 153RD ST	\$155,000	4+2	310-533-9608 *

NEW LISTINGS DIRECTORY

* THEMLS ^{PRO} ™ NEW LISTINGS					NEW LISTINGS DIRECTORY			IFC - INSIDE FRONT COVER, IBC - INSIDE BACK COVER, BC - BACK COVER					
DESERT HOT SPRINGS					<i>Single Family</i>								
13-652327PS	656F7	8238 SUMMIT PASS	\$219,950	3+3	760-327-3990	*	13-652477PS	786F3	671 S GRENFALL RD	\$431,400	2+3	760-459-1396	*
13-652445PS	696J2	10321 PALM DR	\$119,900	3+2	760-329-8233	*	13-652183PS	816F1	990 E MURRAY CANYON DR	\$389,900	3+2.5	760-325-9091	*
DESERT HOT SPRINGS					<i>Land</i>								
13-651471PS	726G2	0 SYCAMORE	\$15,000		760-844-7500	*	PALM SPRINGS SOUTH END					<i>Condo / Co-op</i>	
DESERT HOT SPRINGS					<i>Residential Manufactured/Mobile Home</i>								
13-652781PS	696J7	15300 PALM DR #171	\$79,500	2+2	760-329-8233	*	13-652305PS	786J5	301 WESTLAKE TER	\$359,000	2+2	760-328-3381	*
13-652605PS	727F1	69540 FAIRWAY DR	\$73,540	2+2	760-329-8779	*	13-651959PS	786H5	1722 SAN SEBASTIAN CT	\$355,000	2+2.5	760-325-7800	*
13-652373PS	727G2	17850 CORKILL RD #36	\$30,000	2+2	760-329-8233	*	13-652147PS	787E6	7770 PASEO AZULEJO	\$239,000	3+2	760-328-8200	*
DESERT HOT SPRINGS SE					<i>Lease</i>								
13-652275	697D5	13553 AVENIDA LA VISTA ST	\$975	3+2	310-910-8419	*	13-652853PS	787A5	2356 S LINDEN WAY #E	\$209,000	2+2	760-325-9091	*
GLENDALE					<i>Income</i>								
13-652631	564D2	1231 VALLEY VIEW RD	\$949,000		213-388-2988	*	13-652551PS	787A5	2343 MIRAMONTE CIR #A	\$175,000	2+2	760-674-3452	*
GLENDALE					<i>Land</i>								
13-652091	564G2	0 0 SWARTHMORE	\$349,000		323-671-1200	*	13-652459PS	786H3	500 S FARRELL DR #N86	\$125,000	1+1	760-323-3730	*
HAWTHORNE					<i>Income</i>								
13-652201	733F2	3153 W 134TH PL	\$388,500		310-970-4000	*	PALM SPRINGS SOUTH END					<i>Lease</i>	
LA CANADA FLINTRIDGE					<i>Single Family</i>								
13-652415	534J1	4770 ROSEBANK DR	\$3,580,000	6+6	213-531-0285	*	13-652571PS	787B5	5190 LAKESIDE DR	\$1,700	3+4	760-537-2900	*
LA MIRADA					<i>Lease</i>								
13-651625	7374	15020 COSTA MESA DR	\$3,300	6+4	323-451-2081	*	13-651547PS	787A3	4086 CALLE DE CARLOS #3	\$695	2+1	760-832-9963	*
13-651527	7374	15052 SAN FELICIANO DR	\$2,700	3+2	323-451-2081	*	PALM SPRINGS SOUTH END					<i>Residential Manufactured/Mobile Home</i>	
13-651591	7373	14320 DE ALCALA DR	\$2,500	3+2	323-451-2081	*	13-652381PS	787D5	124 CALLE DEL CALLADO	\$35,000	2+2	760-416-1646	*
LA PUENTE					<i>Lease</i>								
13-651507	679B1	343 RICHBURN AVE	\$1,700	3+1	323-451-2081	*	13-651955PS	786E5	119 CARAVAN	\$27,500	1+1	760-831-6199	*
LA QUINTA NORTH					<i>Single Family</i>								
13-651753PS	849J1	79291 SIERRA VIS	\$409,000	3+2	760-567-6875	*	13-652681PS	786J6	104 SATURN ST	\$8,900	1+1	760-699-6100	*
LAWDALE					<i>Income</i>								
13-652005	733C7	4434 W 167TH ST	\$449,500		310-777-6200	*	PALOS VERDES ESTATES					<i>Lease</i>	
LOMITA					<i>Income</i>								
13-651933	793G5	25515 LUCILLE AVE	\$399,000		310-482-2200	*	13-652761	792H3	400 PASEO DEL MAR	\$10,500	5+4	310-577-5300	*
MANHATTAN BEACH					<i>Income</i>								
13-652617	732E4	472 ROSECRANS AVE	\$1,900,000		310-301-3500	*	PASADENA					<i>Single Family</i>	
MONROVIA					<i>Lease</i>								
13-652143	567J4	1016 ORANGE AVE	\$2,695	4+2	323-851-5512	*	13-651929	565H2	162 E CLAREMONT ST	\$550,000	6+2	562-259-8701	*
MONTROSE					<i>Lease</i>								
13-651931	534H3	2249 MONTROSE AVE #8	\$2,600	3+3	323-735-6400	*	13-651517	565H1	1404 N MARENGO AVE	\$399,000	3+2	323-316-9800	*
NORTH LONG BEACH					<i>Single Family</i>								
13-652153	765F3	1143 E PLYMOUTH ST	\$315,900	3+1	310-432-6400	*	PASADENA					<i>Condo / Co-op</i>	
13-652025	735D7	395 E 67TH ST	\$299,000	3+2	702-927-4500	*	13-651497	566E1	1209 DEL REY AVE	\$699,000	3+3	800-252-3395	*
NORWALK					<i>Lease</i>								
13-651613	7067	10651 DOWNEY NORWALK RD	\$2,500	3+2	323-451-2081	*	PASADENA					<i>Income</i>	
13-652485	736G2	11657 ANGELL ST	\$2,200	2+1	323-451-2081	*	13-652237	566D3	446 LOLA AVE	\$569,000		800-736-9634	*
OJAI					<i>Lease</i>								
13-652425	442E6	531 EL JINA LN	\$6,700	4+2.5	310-871-1208	*	POMONA					<i>Single Family</i>	
PALM DESERT NORTH					<i>Single Family</i>								
13-651593	818E4	40441 CORTE PLACITAS	\$497,500	4+3.5	310-230-3048	*	13-652799	600F6	1498 VAL VISTA ST	\$500,000	5+3	310-666-6464	*
PALM DESERT NORTH					<i>Condo / Co-op</i>								
13-652397PS	818F2	1609 VIA SAN MARTINO	\$269,900	2+2	760-325-9091	*	POMONA					<i>Lease</i>	
PALM DESERT NORTH					<i>Lease</i>								
13-651619	818E4	40441 CORTE PLACITAS	\$3,250	4+3.5	310-230-3048	*	13-652619	601A7	1520 PALOMARES ST	\$1,600	2+1	323-451-2081	*
PALM SPRINGS CENTRAL					<i>Single Family</i>								
13-652487PS	756C6	925 W PANORAMA RD	\$1,275,000	4+3	760-699-6100	*	13-652595	640H4	1161 COLONY DR	\$1,550	3+1	323-451-2081	*
13-652333PS	757A7	4244 ARCADIA ST	\$798,500	3+3.5	760-322-2286	*	13-652623	640G1	551 DATE ST	\$1,550	3+1	323-451-2081	*
13-651987PS	757A7	4315 VANTAGE LN	\$759,000	3+2.5	760-844-7500	*	REDONDO BEACH					<i>Condo / Co-op</i>	
13-652253PS	786G1	1863 E PARK DR	\$689,000	4+3	760-699-6100	*	13-651713	763A6	814 CAMINO REAL #204	\$389,000	2+2	310-482-2200	*
13-652281PS	786H2	205 N ORCHID TREE LN	\$569,000	3+2	760-459-1396	*	ROLLING HILLS ESTATES					<i>Single Family</i>	
13-652053PS	786G1	595 N CERRITOS DR	\$489,000	3+2	760-325-9091	*	13-652401	822J1	31 HILLCREST MDWS	\$1,249,000	3+3	213-380-9996	*
PALM SPRINGS CENTRAL					<i>Condo / Co-op</i>								
13-652395PS	786F1	371 E AMENO DR	\$269,900	2+2	760-325-9091	*	13-651455	793H7	28 ENCANTO DR	\$899,000	3+2	310-474-5808	*
13-652513PS	786F2	280 S AVENIDA CABALLEROS #116	\$154,000	2+2	760-327-3990	*	ROWLAND HEIGHTS					<i>Residential Manufactured/Mobile Home</i>	
13-651717PS	756G7	1829 E TACHEVAH DR	\$112,000	1+1.5	760-778-7832	*	13-651699	679C4	1560 OTTERBEIN AVE #172	\$105,000	4+2	562-331-0716	*
PALM SPRINGS CENTRAL					<i>Land</i>								
13-651687PS	786H2	2870 NW VIA VAQUERO	\$585,000		760-322-2286	*	SAN DIMAS					<i>Lease</i>	
13-651535PS	786C1	16 LAS PALMAS ESTATES DRIVE	\$399,000		760-537-2900	*	13-651469	600B1	432 5TH ST	\$2,050	3+2	323-451-2081	*
13-651543PS	786C1	17 LAS PALMAS ESTATES DRIVE	\$399,000		760-537-2900	*	SOUTH GATE					<i>Single Family</i>	
PALM SPRINGS CENTRAL					<i>Lease</i>								
13-652515PS	756F7	852 CALLE DE FLORA VIS	\$1,450	3+2	760-832-9963	*	13-651651	705D6	10520 ORANGE AVE	\$290,000	2+1	323-634-9485	*
PALM SPRINGS SOUTH END					<i>Single Family</i>								
13-652489PS	786C3	589 S LA MIRADA RD	\$1,425,000	3+4.5	760-322-2286	*	SOUTH GATE					<i>Condo / Co-op</i>	
13-652121PS	786H5	1950 W RANCHO VISTA TRAIL	\$1,375,000	3+3.5	760-778-6200	*	13-652069	705F2	5211 CLARA ST #E	\$199,900	3+3	323-300-1000	*
13-651665PS	816G2	1635 RIDGEMORE DR	\$949,000	3+4	760-327-3990	*	SOUTH GATE					<i>Income</i>	
13-651761PS	786E5	1837 S AQUANETTA DR	\$729,000	3+2	760-459-1396	*	13-651963	705B2	8127 8125-31 STATE ST	\$475,000		213-620-1010	*
13-651741PS	786H5	2910 CANDELIGHT LN	\$589,000	2+2.5	760-327-3990	*	THOUSAND PALMS					<i>Single Family</i>	
13-652125PS	786F4	1347 PRIMAVERA DR	\$459,000	3+2	760-864-6400	*	13-652355PS	788D1	30520 MONTE VISTA WAY	\$55,000	2+2	760-343-7337	*
PALM SPRINGS CENTRAL					<i>Income</i>								
13-651939	795E3	2336 PASADENA AVE	\$550,000		310-285-1741	*	TORRANCE					<i>Single Family</i>	
OUT OF AREA					<i>Single Family</i>								
13-652675	901A4	3235 CALLE BONITA	\$2,685,000	5+3.5	805-489-2229	*	13-651453PS	793G1	2359 W 231ST ST	\$1,099,000	5+4	760-902-1500	*
13-651823PS	817H4	70378 PECOS RD	\$2,249,000	4+6	760-834-7500	*	WHITTIER					<i>Single Family</i>	
13-652341PS	817J3	35 CHURCHILL LN	\$1,695,000	3+5.5	760-770-6801	*	13-652193	676J4	5829 JUAREZ AVE	\$275,000	3+1	818-881-2353	*
13-652767	889D6	1605 ARCH BAY DR	\$1,599,000	4+3	310-339-7299	*	WHITTIER					<i>Lease</i>	
13-651971PS	848J1	75070 MUIRFIELD CT	\$1,250,000	3+4.5	760-844-7500	*	13-651437	6376	2244 MARDEL AVE	\$2,900	4+3	323-451-2081	*
13-651837	770C7	18501 SERRANO AVE	\$1,200,000	7+3.5	310-858-7755	*	13-651479	677A4	10808 FLORAL DR	\$2,500	3+2	323-451-2081	*
13-651769	455-A	25614 TRENT WAY	\$890,000	5+4	213-385-6500	*	WILMINGTON					<i>Lease</i>	

NEW LISTINGS DIRECTORY

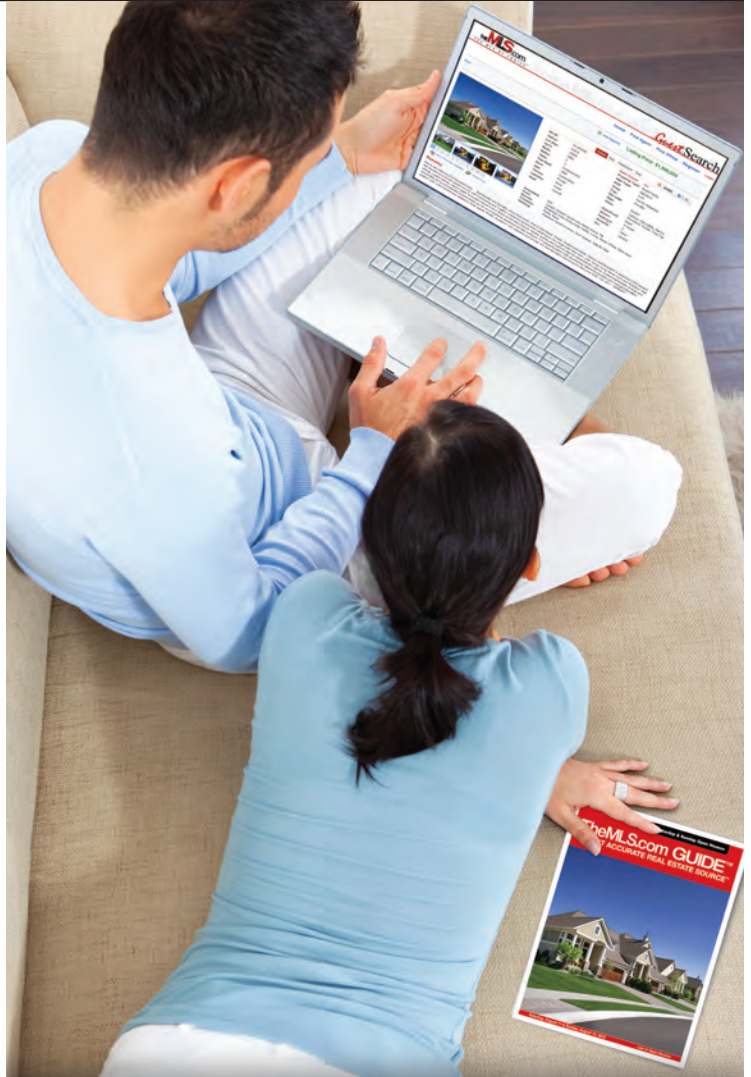
NEW LISTINGS DIRECTORY

IFC - INSIDE FRONT COVER, IBC - INSIDE BACK COVER, BC - BACK COVER

NEW LISTINGS DIRECTORY

THEMLS^{PRO}™ NEW LISTINGS

13-651485	595B6	3727 GRIFFIN AVE	\$599,000	3+3	323-316-9800	*
13-652385	767E4	8051 SAN LUIS CIR	\$554,000	4+2	760-804-8200	*
13-651579	595C3	209 S AVENUE 55	\$549,000	3+2	310-272-8002	*
13-652277PS	756E5	320 E DESERT HOLLY CIR	\$549,000	3+1.75	760-844-7500	*
13-652241PS	756E5	814 E GRACE CIR	\$499,000	3+2	951-515-2443	*
13-652801PS	818C3	16 ESTRELLA ST	\$479,000	3+3	760-325-9091	*
13-652805	446-G	27916 BALSAM CT	\$470,000	3+3	310-266-4474	*
13-651467PS	756E5	2636 N STARR RD	\$469,000	3+2	760-459-1396	*
13-652447PS	756G4	2280 E FRANCIS DR	\$425,000	3+2	760-327-3990	*
13-652081	863B7	20672 MOUNTAIN VIEW RD	\$399,000	3+1	818-761-7234	*
13-652421PS	756G4	2040 E JOYCE DR	\$399,000	3+2	760-327-3990	*
13-652219	769B6	1031 S DOVE PL	\$379,900	3+2	562-496-3200	*
13-652651	595B1	1508 N AVENUE 50	\$359,000	2+1	310-652-6285	*
13-651861	706A1	6733 CHARNER ST	\$325,000	2+1	424-702-3000	*
13-652153	765F3	1143 E PLYMOUTH ST	\$315,900	3+1	310-432-6400	*
13-652539	574E4	6641 EARHART AVE	\$310,000	3+2.5	310-386-1313	*
13-652025	735D7	395 E 6TH ST	\$299,000	3+2	702-927-4500	*
13-652263	646E3	22184 MCCLARREN ST	\$279,000	4+2	909-373-2505	*
13-652257	769B6	1407 E GARY PL	\$259,000	3+2.5	562-860-2625	*
13-652359PS	757D6	68155 ENCINITAS RD	\$239,900	4+3	760-320-5033	*
13-652271PS	5410-G	83055 BROADMOOR DR	\$190,000	4+3	800-294-4656	*
13-651785	00000	2160 CHARLIE CHAMBERS DRIVE	\$169,900	3+2	310-671-8271	*
13-651519PS	787D2	31085 WHISPERING PALMS TRL	\$139,500	3+2	760-459-1396	*
13-651803	401-B	44202 BALMUIR AVE	\$130,000	4+3	619-800-2028	*
13-651983PS	724F2	55875 SAGEBRUSH RD	\$45,000	2+2	760-325-1111	*
OUT OF AREA			<i>Condo / Co-op</i>			
13-651859	995E1	3791 STATE ST #B	\$1,100,000	3+3	310-482-2200	*
13-651807	737J7	52 WALTER WAY	\$400,000	4+3	310-540-0072	*
13-652803PS	818A2	78 PRINCETON DR	\$390,000	3+3	760-325-4500	*
13-652817	595D4	898 TEMPLE TERRACE #214	\$299,900	2+1	323-300-1000	*
13-651659	824B7	2030 S CABRILLO AVE #205	\$197,900	1+1	310-372-2864	*
13-652117PS	817H1	4 KEVIN LEE LN	\$189,000	3+3	760-770-6801	*
13-652249PS	756E6	754 E VISTA CHINO	\$119,000	2+2	760-459-1396	*
OUT OF AREA			<i>Income</i>			
13-651909	919C1	205 ONYX AVE	\$1,399,000		310-432-6400	*
13-651939	795E3	2336 PASADENA AVE	\$550,000		310-285-1741	*
13-651783PS	756E6	463 E CHUCKWALLA RD	\$499,000		760-325-7784	*
OUT OF AREA			<i>Land</i>			
13-651511PS	50419	0 NA	\$1,200,000	Land	760-459-1396	*
13-652063	392-C	0 VAC/27 STW/VIC AVENUE C6	\$177,700	Land	213-380-9996	*
13-652343PS	7560	0 CARDILLO	\$135,000	Land	760-322-2286	*
13-651891	326132	113 VAC/VIC AVENUE A2/113 ST	\$80,000	Land	888-538-2688	*
13-652107PS	756D3	213 AVENIDA CECA	\$40,000	Land	760-322-2286	*
13-652243PS	999A1	0 STARLIGHT	\$28,000	Land	760-322-1711	*
13-652499PS	4819B5	0 CIELITO DR	\$9,000	Land	760-365-9255	*
13-652463PS	4819A7	0 CAMPANULA ST	\$7,000	Land	760-365-9255	*
13-652481PS	4818J7	0 CAMPANULA ST	\$6,000	Land	760-365-9255	*
OUT OF AREA			<i>Lease</i>			
13-651625	7374	15020 COSTA MESA DR	\$3,300	6+4	323-451-2081	*
13-651641	464-A	24163 MATTHEW PL	\$2,850	5+3	213-384-1800	*
13-652325	860F4	11 ARGENT CIR	\$2,750	3+2	310-573-7088	*
13-651527	7374	15052 SAN FELICIANO DR	\$2,700	3+2	323-451-2081	*
13-651591	7373	14320 DE ALCALA DR	\$2,500	3+2	323-451-2081	*
13-651613	7067	10651 DOWNEY NORWALK RD	\$2,500	3+2	323-451-2081	*
13-651539	446-F	19420 LARODA LN	\$2,200	3+3	213-380-8245	*
13-652485	736G2	11657 ANGELL ST	\$2,200	2+1	323-451-2081	*
13-652815	565D6	949 POPPY ST	\$1,850	2+2	310-709-8283	*
13-651965	823J7	1235 W 23RD ST #2	\$1,800	3+2	858-091-5860	*
13-651913	595D4	4260 VIA ARBOLADA #121	\$1,750	2+2	213-385-6500	*
13-652299PS	696E1	64689 PINEHURST CIR	\$1,285	3+2	760-329-4600	*
13-651857PS	481-D	40356 CLIFF LN	\$1,250	2+2	909-866-8600	*
13-652349PS	474-D	1021 GREENWAY DR	\$1,100	4+3	909-866-8600	*
13-652293PS	481-F	728 MAPLE LN	\$700	2+1	909-866-8600	*
OUT OF AREA			<i>Residential Manufactured/Mobile Home</i>			
13-652061	810H6	1300 MENLO AVE #156	\$17,000	2+2	626-437-2854	*



Looking for Property
in Southern California?

Go to
THE SOURCE...

TheMLS.com
THE MLS OF CHOICE™

...Where Other Real Estate
Websites get
THEIR Information!

Visit TheMLS.com

SATURDAY WESTSIDE / LOS ANGELES
SATURDAY WESTSIDE / LOS ANGELES

WESTWOOD - CENTURY CITY Lease

10833 WILSHIRE BLVD #210 Open Sat 1-5 632B3
\$4,020 2+2 CONTEMPORARY

Completely Remodeled unit with top of the line finishes. Full Service Building on the Wilshire Corridor. 24 hr. concierge, doorman, valet, controlled access. Pool, spa, fitness center, sauna, and more

MLS#13-648485 All SS kitchen, washer, dryer, elevator
 Beverly Taki 310-456-4843 SEABREEZE ESTATES

SATURDAY SAN FERNANDO VALLEY

TARZANA Single Family

18519 LINNET STREET Open Sat 12-4
\$1,299,000 5+6

GORGEOUS TARZANA SOUTH OF BLVD.

Also Open Sunday! Viking Range in chef's kitchen. Etched windows, kitchen breakfast area spacious, elegant dining room. Home office, media room featuring a 100" screen which drops from a ceiling compartment, 7 channel surround sound with dbl. sub-woofers. Peaceful and serene backyard featuring large pool, welcoming spa, and total privacy. Custom built bay windows, you can retire for the evening and experience the one-of-a-kind master suite with his and hers master baths and huge walk-in closets.

Tory H./Carmen M. SOTHEBY'S/RODEO
 MLS#SR13023509CN

SUNDAY WESTSIDE / LOS ANGELES

BEL AIR - HOLMBY HILLS Single Family

2993 N BEVERLY GLEN CIR Refresh. Sun 1-2 592/A1
\$3,590,000 6+9 3sty-MEDITERRANEAN

INCREDIBLE GATED 6 BD 9 BA ITALIANATE VILLA W/APPROX 7,167SF

built in 2003 w/ impeccable attention to every detail. Oversized public rooms flow seamlessly from one to another inviting lg scale entertaining spilling over multiple outdoor areas w/ views of the city & ocean including pool & spa. Sumptuous master suite includes sitting/office area & fireplace w/amazing views of the ocean & city. Huge walk in closets & lovely his/hers baths with steam showers & spa tub. Special finishes include imported custom stone and granites, elevator and six car garage.

www.2993beverlyglencir.com
 Jonathan Sands 310.704.6612 SOTHEBY'S BH

BRENTWOOD Single Family

628 N BONHILL RD Open Sun 1-4 631F2
\$5,199,000 3+2 TRADITIONAL

Inspire magnificence on approximately two acres of land, down a long driveway in prime Brentwood. (Neighbor has easement along driveway at beginning of it.) Enjoy the serenity, privacy and expansive views exclusive to only a handful of residential lots on the Westside. This is a unique offering that presents phenomenal opportunities for those looking to create their own real estate vision.

BBQ,Bit-Ins,Cing Fan,Dshwshr,Dryer,Other
 Simon Salloom PRUDENTIAL CA - MONT
 MLS#13-646731

333 CROWN DR Open Sun 1-4 631F2
\$2,695,000 3+2.5 SPANISH

OPEN SUNDAY 1-4PM!

Damon Kronsberg 310-633-4900
 COLDWELL BANKER - BW
 MLS#13-642787

DOWNTOWN L.A. Single Family

2101 OAK ST Refresh. Sun 1-4 634C6
\$639,500 6+3.5 2sty-VICTORIAN

CORNER LOT- HISTORIC NEIGHBORHOOD. Near USC. Bright, Recent remodel, 2 Fireplaces, Laundry inside, Orig hardwood floors, Carpet in bedrooms, Tile in kitchen, has front Porch & Fenced backyard.

MLS#12-634555 Grbg Disp
 Lucy F. Kihm 213-200-7701 JOHN AAROE GROUP

WESTSIDE / LOS ANGELES
HOLLYWOOD HILLS EAST Single Family

2910 N BEACHWOOD DR Refresh. Sun 1-4 593G1
\$1,329,000 4+3 FRENCH NORMANDY

HOLLYWOODLAND ESTATE

An original John De Lario design, features grand living room w/ gorgeous plaster curved ceilings, detailed moldings and fireplace. Formal dining room w/ hand painted wood ceilings. Updated kitchen features white granite counter-tops, abundant cabinetry, and dark slate tile. Second bedroom leads out to a newly constructed patio with a private and secure back yard, ready for entertaining. A second master bedroom highlights the lower level, with bath and sitting room. Ready for immediate move in.

Bit-Ins,Dshwshr,Dryer,Grbg Disp,Other
 Lancelot G. Keffler 310-424-0920
 KETTLER FINANCIAL IN
 MLS#13-647619

INGLEWOOD Single Family

6425 SPRINGPARK AVE Open Sun 1-4 672J7
\$759,000 3+4 1sty-ARCHITECTURAL

SPRAWLING LADERA HEIGHTS BEAUTY, POOL AND SPA LARGE YARD

Ladera Heights spacious home with swimming pool and spa,fenced.Master bath has spa tub,and steam shower, kitchen has original cabinets,new cooktop,and new double ovens, and new refrigerator, ready to move in.Special Wells Fargo mortgage financing available, AS_IS sale,new roof, and heater and air conditioning system, fresh paint exterior, new carpet.

elect stove top,double wall ovens,refrig
 Dolores Golden 3104891792
 FIRST INTERSTATE REA
 MLS#13-651863

PACIFIC PALISADES Single Family

888 TOULON DR Open Sun 1-4 631C5
\$5,995,000 5+6.5 MEDITERRANEAN

OPEN 1-4PM 2/24

Exquisite sun-drenched Mediterranean Villa located in the prestigious Palisades Riviera. Perfectly situated on a beautifully landscaped lot, this elegant & private estate enjoys compelling 2nd story treetop, golf course & ocean views. Dramatic 2-story foyer opens to the stately living room & formal dining room with high ceilings & multiple doors opening out onto the patio, pool & spa.

Cent Vac,Dshwshr,Dryer,Elvtr,Frzr,Other
 Jody Fine PRUDENTIAL CA - PAU
 MLS#12-611475

16820 CALLE BELLEVISTA Open Sun 1-4 630H1
\$2,995,000 5+6 MEDITERRANEAN

PRESTIGIOUS 24 HR GUARD GATED COMMUNITY "ENCLAVE" OCEAN VIEW

" REDUCED \$250,000" The property located in the prestigious 24 HR guard-gated community "Enclave" with almost 6000 sq ft. 5 bedrooms, 6 bathrooms & den or office. Ocean & mountain views. Dramatic entryway with a grand 2-story foyer. High ceilings leads to an open floor plan, perfect for entertaining. The gourmet kitchen has granite counter tops with center island, Viking & Thermadore appliances, Sub-Zero refrigerator & eating area. Butler's pantry, Pool, Spa. HOD included Summit Club membership.

BBQ,Bit-Ins,Dshwshr,Dryer,Grbg Disp,
 Youn Shinn 310 387 2440
 NELSON SHELTON & ASS
 MLS#12-641443

850 LACHMAN LN Open Sun 1-4
\$2,535,000 4+3.5

OCEAN-TO-MOUNTAIN PANORAMAS

Hi-Def views! Gated/private Marquez Village Contemporary. Sun-filled California living! Fab open floor plan+seamless vistas from each major room in house-view decks+grassy yard w/sunrise/sunset/bird's eye report of surf+snow conditions/ magical Santa Monica Ferris Wheel+sparkling City lights throughout Southland. Expansive lot w/two yards/fruit trees+over 150' of frontage! Incredible master w/huge walk-in+bonus. More unfinished bonus spaces could be offices/studios/gym/wine/media+theatre/guest

Stove, Fridge,
 Betty-Jo Tilley 310-230-3767
 PRUDENTIAL CA - PAU
 MLS#12-641443

PLAYA DEL REY Income

389 FOWLING ST Open Sun 1-4
\$1,050,000

Duplex- 2Bd + 2Bath + Fireplace + 1250 sq.ft. each unit. Fully remodeled, top of the line. 3 car detached garage.

Camelia Katouzian (310) 567-9779 SHOREWOOD REALTORS

OPEN HOUSES

WESTSIDE / LOS ANGELES SATURDAY

OPEN HOUSES

WESTSIDE / LOS ANGELES

SUNDAY

OPEN HOUSES

WESTSIDE / LOS ANGELES

BY APPT

WESTSIDE / LOS ANGELES

NEW LISTINGS

WESTSIDE / LOS ANGELES

SUNDAY	WESTSIDE / LOS ANGELES	WESTSIDE / LOS ANGELES	WESTSIDE / LOS ANGELES
SANTA MONICA		<i>Single Family</i>	
2620 24TH ST		Open	Sun 1-4 671J2
\$1,189,000		2+2	CALIFORNIA BUNGALOW
EXCELLENT HOUSE IN DESIRABLE SUNSET PARK - SANTA MONICA			
Excellent house in desirable Sunset Park area of Santa Monica. Classic contemporary California home on a great street. Newly remodeled kitchen, hardwood floors and tile throughout. Spacious master suite, detached garage, and a beautiful large grassy yard, great for entertaining friends and family.			
Btl-Ins,Cbl,Cing Fan,Dshwshr,Grb			
Simon Salloum			
PRUDENTIAL CA - MONT			
MLS#13-647721			

SANTA MONICA	<i>Income</i>		
2435 34TH ST		Open	Sun 1-4 672A1
\$1,500,000		CALIFORNIA BUNGALOW	
GROW YOUR FUTURE, LIVE IN ONE RENT OUT TWO			
Updated Sunset Park triplex, quiet street yet minutes to everything! SMR2 on a 7680 sq.ft lot. Redone by award winning production designer; Owner's 2 bedrm has high ceilings & fire place. 2nd bedrm opens to deck for indoor/outdoor living. Kitchn has granite & designer appliances. Bathrm has unique fixtures & glass enclosed shower. Rear duplex has 1 bedroom & single units. Grassy yard & mature trees complete outdoor space. Owner's unit delivered vacant. Live in, rent /or build-a rare opportunity!			
Dshwshr,Dryer,Grbg Disp,Rng/Ovn,Fridg,			
Janin Paine			
KELLER WILLIAMS-SANT 310-560-5088			
MLS#13-646805			

SUNSET STRIP - HOLLYWOOD HILLS WEST	<i>Single Family</i>		
8579 CRESCENT DR		Open	Sun 1-4 592J3
\$1,549,000		3+2.5	2sty-COUNTRY ENGLISH
3+2.5 CUSTOM BUILT CONTEMP ENGLISH COTTAGE W OFFICE			
Beautifully redone, well-appointed & sophisticated newer 2-story contemp English cottage w open floor plan, gourmet kitchen, SS appliances, vaulted exposed beam ceilings, w/ Frpl, & wood flrs. The secluded mstr feat its own fireplace, vaulted ceilings & separate entrance. This quiet retreat features a side deck,private rear patio/lounge area with flagstone, tree top views & detached garage currently use as office. Located minutes from the Sunset Strip in Wonderland school district.			
Newer Construction			
Brian Mazurkiewicz			
JOHN AAROE GROUP 310-386-9086			
MLS#13-650471			

SUNDAY	OTHER AREAS		
PALM DESERT NORTH		<i>Residential Manufactured/Mobile Home</i>	
74048 ANGELS CAMP RD		Open	Sun 11-1 818G5
\$159,900		Prjct	1sty-CONTEMPORARY
Updated contemporary home at Portola CC... You own land. HOA incl 18 hole golf! Luxurious 55+ home w/Mtn views. Gas cooking, built in micro, s/s refrigerator, W/D, bonus rm. Dial 760-902-1960 at entry			
Cing Fan,Dshwshr,Dryer,Disp, Micro, Ref			
Jeffrey Grohs			
760-902-1960 WINDERMERE REAL ESTA			
MLS#13-644715PS			

WESTSIDE / LOS ANGELES	WESTSIDE / LOS ANGELES		
BY APPOINTMENT	WESTSIDE / LOS ANGELES		
WESTWOOD - CENTURY CITY		<i>Condo / Co-op</i>	
2222 AVENUE OF THE STARS #1702		By Appt.	632F4
\$939,000		2+2	ARCHITECTURAL
PANORAMIC VIEWS, IMMACULATE MOVE IN CONDITION.			
Luxury living with incredible panoramic city and ocean views. The Large two bedroom condo (1,639 sq. ft), in immaculate condition w/Miele washer and dryer in unit, is centrally located in Century City. The Century Towers are a full service gated complex, including 24 hrs security, valet parking, doorman, heated pool, sauna, gym, lighted tennis courts, and more. Enjoy amazing views and sunsets from this high floor in close proximity to shopping, dining and entertainment.			
Btl-Ins,Dshwshr,Dryer,Elvtr,Rng/Oven			
Ron Wolotzky/Lieberman			
RODEO REALTY, BH (323) 646-1206			
MLS#12-641935			

NEW LISTINGS WESTSIDE / LOS ANGELES

SANTA MONICA	<i>Condo / Co-op</i>		
1217 YALE ST #110			631G6
\$929,000		2+2.5	MEDITERRANEAN
Light and bright move-in-ready luxury townhouse features 2 bedrooms and 2.5 baths with loft/office, sun deck & bonus room (not included in overall square footage). Enter this unit through a beautiful gated courtyard to custom French paver floors, crown moldings, fireplace & garden patio. Open kitchen is perfect for entertaining and features designer tile, high end appliances & maple cabinets. Master has crown moldings, high ceilings, & a large walk in closet. www.1217YaleStreet.com			
Btl-Ins,Dshwshr,Dryer,Grbg Disp,Other			
Jody Fine 310-230-3770			
PRUDENTIAL CA - PALISADES			
MLS#13-652173			

VENICE	<i>Income</i>		
539 VENICE WAY			671H6
\$949,500		2sty-CONTEMPORARY	
These 2 units can easily be converted into a single family home, or keep it as 2 permitted income units. Lots of options at the Buyer's hand. Great location-Ocean Breeze! Both units are gorgeous. Rear Unit is a 2 story - 20' high slanted ceiling w/ fireplace, bright, natural light w/large skylight. This unit features 2 bedrooms, 2 baths and two large balconies, and attached 2 car direct access garage. Front unit with high ceilings features one bedroom , 1 bath and a nice front patio.			
Btl-Ins,Dshwshr,Dryer,Grbg Disp,Hood Fan,Other			
Sarit Finkelstein 310-612-6777			
SARIT FINKELSTEIN			
MLS#13-650257			

Why Advertise? High Traffic Distribution Locations.

Throughout the Los Angeles Metropolitan Area! Find us in Coffee Houses, Supermarkets, Restaurants, Hospitals, Hotels, Retail Shops, Farmers' Markets, and More...



Two Acres

(approximately 83,166 per assessor)

624 & 628 N. Bonhill

Two Homes On Two Lots Down A Private Drive That Can Be Renamed Prime Brentwood



Open Sunday 1-4pm



Simon Salloom
WestsideSimon.com
310.749.8686

For Discerning Buyers and Sellers of Fine Homes

BonhillEstate.com
or Text **LUXE** to **69302**
And Inspire Magnificence

LUXURY
PROPERTIES



BEVERLY HILLS ESTATE \$2,950,000 W/ 4BDS, GH.POOL, BH SCHOOLS



OPEN SUNDAY 1-4

\$2,950,000

1261 COLDWATER CANYON DR

GORGEOUS, SOPHISTICATED AND DRAMATIC BEVERLY HILLS ESTATE WITH HUGE FLAT ESTATE GROUNDS OF APPROXIMATELY 17,000 SQ. FEET WITH TOWERING TREES FOR PRIVACY SURROUNDING THE PROPERTY. FABULOUS TRADITIONAL WITH HUGE SET BACK FROM THE STREET WITH A CIRCULAR DRIVE AND THREE PRIVATE GARAGES. FOUR LARGE BEDROOMS, FOUR BATHS PLUS A FABULOUS GUEST HOUSE. SENSATIONAL RAISED ROCK POOL AND SPA BEVERLY HILLS SCHOOLS, EL RODEO GRAMMER SCHOOL

SANDI LEWIS

310 770-4111

sandral@coldwellbanker.com

©2012 Coldwell Banker Real Estate LLC. Coldwell Banker® Previews® and Coldwell Banker Previews International® are registered trademarks licensed to Coldwell Banker Real Estate LLC. An Equal Opportunity Company. Equal Housing Opportunity. Owned And Operated By NRT LLC. Broker does not guarantee the accuracy of square footage, lot size or other information concerning the condition or features of property provided by seller or obtained from public records or other sources, and the buyer is advised to independently verify the accuracy of that information through personal inspection and with appropriate professionals.



FEATURED LISTINGS

FOR MORE LISTINGS VISIT US AT THEMLS.COM™

BEL AIR - HOLMBY HILLS

NEW LISTING

3051 ANTELO VIEW DR \$6,950,000 REFRESH. SUN 1-4



MLS#13-650911 5+5 UNKNOWN

THE MERV GRIFFIN ESTATE! ON OVER 2 ACRES IN BEL AIR
 RODEO REALTY - BEVER JOSH FLAGG 310-936-9020

BEVERLY HILLS

611 N RODEO DR \$7,995,000 BY APPT



MLS#12-636935 6+7.5 TRADITIONAL

BEAUTIFUL TRADITIONAL WITH FANTASTIC LAYOUT!
 COLDWELL BANKER-BH N JOYCE ESSEX HARVEY 310-777-6375

BEVERLY HILLS

1130 SHADOW HILL WAY \$13,495,000 OPEN SUN 1-4



MLS#13-642377 7+14 MEDITERRANEAN

GATED BEVERLY HILLS PALATIAL ITALIANATE ESTATE
 NOURMAND&ASSOCIATES MYRA NOURMAND 310-888-3333

LOS FELIZ

3643 LOWRY RD \$1,249,000 OPEN SUN 1-4




MLS#13-650287 4+3.5 CONTEMP MED

NORTH OF THE BLVD, 4 BEDS/3.5 BA RE-IMAGINED AND EXPANSIVE!
 SOTHEBY'S INT'L RLTY BRYANT | REICHLING 323-395-9084

PACIFIC PALISADES

1501 UMEO RD \$10,450,000 OPEN SUN 1-4



MLS#12-598105 6+6.5 MEDITERRANEAN

VIEW VILLA PALISADES RIVIERA 2.2 AC W/VINEYARD
 COLDWELL BANKER-PAC. FRAN FLANAGAN 310 801-9805

Why Advertise? Reach Your Peers.

With over 1.6 million page views per Month, TheMLS.com Members Site is the perfect place to reach other Agents! The MLS Weekend Homes & Open Houses™ is posted on TheMLS.com Members Site both as a PDF and a "Flip Book"!

To Get More Exposure,
 Your Properties Featured
 in TheMLS.com Weekend
 Guide are Now Sorted
 by Area!

FEATURED LISTINGS
 FOR MORE LISTINGS VISIT US AT THEMLS.COM™

BEVERLY HILLS 707 WALDEN DR \$6,890,000 OPEN SUN 1-4



MLS#12-630579 5+5 HACIENDA

VERY SPECIAL HACIENDA - HISTORIC & UNSPOILED
 A COMORA/P LESTER 424-230-3746

THE AGENCY 3,799,000 OPEN SUN 1-4

BEVERLY HILLS 606 N PALM DR \$5,795,000



MLS#12-615435 4+7

SOPHISTICATED CALIFORNIA HACIENDA REDUCED BY \$500,000
 JULIETTE HOHNEN 310-200-1111

TELES PROPERTIES 2,400,000

1125 YALE ST

FEATURED LISTINGS

FOR MORE LISTINGS VISIT US AT THEMLS.COM™

SANTA MONICA

22 LATIMER RD

\$3,150,000

BY APPT



MLS#12-629479

Land

RARE OPPORTUNITY TO BUILD IN RUSTIC CANYON!
PRUDENTIAL CA - PALI ISABELLE MIZRAHI 310-230-3720

SUNSET STRIP - HOLLYWOOD HILLS WEST

8623 EDWIN DR

\$1,995,000

OPEN SUN 1-4



MLS#12-637533

4+3.5 1sty-CONTEMPORARY

GREAT LOCATION & VIEW
PARTNERS TRUST LINDSAY | HELLER 310-500-1413

VENICE

2003 ALBERTA AVE

\$2,195,000

BY APPT



MLS#13-647957

5+3.5 ARCHITECTURAL

WWW.2003ALBERTAAVE.COM
COLDWELL BANKER-BH N JAN HORN 310-777-6220

SUNSET STRIP - HOLLYWOOD HILLS WEST

2125 UPPER KRESS ST

\$8,000

BY APPT



MLS#12-642111

4+4 CONTEMPORARY

LAUREL CANYON CONTEMPORARY FURNISHED OR UNFURNISHED \$8600
COLDWELL BANKER-BH S DEBRA LYNN SMALLEY 310-930-4838

SUNSET STRIP - HOLLYWOOD HILLS WEST

2234 STANLEY HILLS DR

\$2,195,000

OPEN SUN 1-4



MLS#13-648927

3+3.5 CAPE COD

STUNNING BRAND NEW CONSTRUCTION!
KW BEVERLY HILLS MILSTEIN/SILVER 310.867.5598

WESTWOOD - CENTURY CITY

10727 WILSHIRE BLVD #1505

\$3,495,000

BY APPT



MLS#13-650617

3+3.5 CONTEMPORARY

UNSURPASSED LUXURY AT THE REMINGTON.
KELLER WILLIAMS HOLL SHAWN S. KORMONDY 323-638-7567

To Get More Exposure,
Your Properties Featured
in TheMLS.com Weekend
Guide are Now Sorted
by Area!

FEATURED LISTINGS
FOR MORE LISTINGS VISIT US AT THEMLS.COM™

- 707 WALDEN DR** - \$6,890,000 - OPEN SUN 1-4 - BEVERLY HILLS - VERY SPECIAL HACIENDA - HISTORIC & UNSPOILED A COMORA/P LESTER 424-230-3746
- 606 N PALM DR** - \$5,795,000 - BEVERLY HILLS - SOPHISTICATED CALIFORNIA HACIENDA REDUCED BY \$500,000 JULIETTE HOHNEN 310-477-1477
- 1125 YALE ST** - \$2,400,000
- 606 N PALM DR** - \$5,795,000 - BEVERLY HILLS - SOPHISTICATED CALIFORNIA HACIENDA REDUCED BY \$500,000 JULIETTE HOHNEN 310-477-1477
- 707 WALDEN DR** - \$6,890,000 - OPEN SUN 1-4 - BEVERLY HILLS - VERY SPECIAL HACIENDA - HISTORIC & UNSPOILED A COMORA/P LESTER 424-230-3746
- 1125 YALE ST** - \$2,400,000