

Find Homes & Open Houses in Southern California

Saturday, February 4 & Sunday, February 5, 2012

HOMES & OPEN HOUSES™

YOUR MOST TRUSTED AND UP-TO-DATE REAL ESTATE RESOURCE



13827 W SUNSET BLVD

Pacific Palisades

\$5,799,000

BY APPOINTMENT ONLY

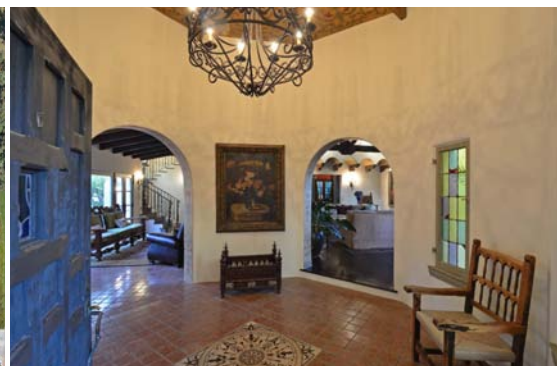
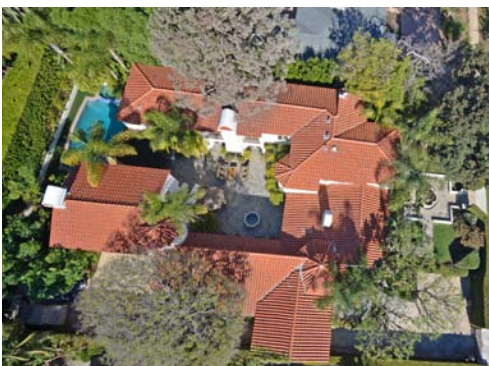
SUSÂN PERRYMAN

ESTATES DIRECTOR
310.261.1960

HILTON & HYLAND

CHRISTIE'S
INTERNATIONAL REAL ESTATE

Amazing arched doorways and balconies describe the integrity of this 1927 restored Spanish Villa. Gorgeous French doors open up the living and entertainment spaces to the beautiful hacienda courtyard with fireplace and fountain, providing an incredible indoor/outdoor living. Original ambience and details are maintained within the glass windows, hand painted archways, ornate tiles, delicately sculpted wrought iron. Tall ceilings with heavy wood beams provide a grand scale and spacious feel for this stunning estate. The Villa provides generous living spaces with gourmet kitchen, family room, loggia, 5 bedrooms in main house and separate guest quarters with complete privacy and generous living spaces. This is truly an incredible, one of a kind home.



FEATURED LISTINGS

FOR MORE LISTINGS VISIT US AT THEMLS.COM

PARK HILLS HEIGHTS

6616-6624 SPRINGPARK AVE #4 \$315,000 OPEN SUN 12-4



MLS#11-559903 2+1 MODERN
2&3 BD UNITS, FHA/VA LOAN 3.5%DOWN, 1021-1800SF, 9 OF 16 SOLD
KELLER WILLIAMS-SM LEE JOHNSON 310-892-2244

BEVERLY HILLS

1012 N BEVERLY DR \$6,495,000 OPEN SUN 1-5



MLS#11-554469 5+6.5 FRENCH
2 STORY GATED FRENCH PROVINCIAL ON A 32,583 SQFT FLAT LOT!
COLDWELL BANKER-BH N YAR MESHKATY 310-666-6394

GLENDALE

1237 NORTH MARYLAND AVENUE \$939,750 OPEN SUN 1-4



MLS#F11164964CN 3+3 TUDOR
OLD WORLD ELEGANCE, URBAN CHIC, MODERN AMENITIES
LAMERICA L.P. KRISTINA NICHOLS 310-924-2896

HIDDEN HILLS

24509 WINGFIELD RD \$4,299,000 BY APPT



5+6 2sty-TRADITIONAL
EXQUISITE HAMPTON STYLE ESTATE 5 BED 6 BATH. APPROX 6451 SF
COLDWELL BANKER MARGIE MARKUS 818.807.7414

SUNSET STRIP - HOLLYWOOD HILLS WEST

8045 SELMA AVE \$1,195,000 OPEN SUN 1-4



MLS#11-568181 3+2.5 2sty-SOUTHERN COLONIAL
STUNNING HOLLYWOOD COLONIAL WITH POOL.
TELES PROPERTIES, IN JULIETTE HOHNEN

TARZANA

5405 AURA AVE \$1,095,000 OPEN SUN 1-4



MLS#11-570529 4+3 RANCH
ONE ACRE FLAT LOT, MULTI-MILLION DOLLAR HOME SO. OF VENTURA!
COLDWELL BANKER-BW ISABELLE HARPER-SMITH 310-466-6079

MONROVIA

128 HIGHLAND PL \$1,229,500 OPEN SUN 1-4



4+3 2sty-SPANISH
RESTORED HISTORIC SPANISH DOUBLE LOT ON PRESTIGIOUS HIGHLAND
LAMERICA, L.P. KRISTINA NICHOLS 310-924-2896

WESTCHESTER

7947 MCCONNELL AVE \$819,500 OPEN SUN 1-4



MLS#11-566109 3+2 TRADITIONAL
FRESH AND STYLISH FAMILY HOME LARGE LOT, READY TO MOVE IN
WYSTEIN CORP. KRISTINA NICHOLS 818-382-3312

OLD PASADENA. NEW VALUE.



NEW CONDOS AND LOFTS FROM THE \$400Ks IN OLD PASADENA.

Condos, lofts, and live/work spaces range from 950 to 2,000 sq. ft., and provide an unparalleled value. Located on the corner of Holly St. and N. Raymond Ave., residents have front-door access to a highly desirable neighborhood, a beloved community, and a building with its own distinguished history as the former Raymond Theatre.

BROKER CO-OP 3%

View floor plans at RaymondRenaissance.com.

CURRENT UNITS AVAILABLE

BEDROOMS	UNIT	SQ. FT.	PRICE
Loft/1BA	210	1152	\$499,000
	511	1150	\$545,000
1BR/1BA	302	966	\$455,000
2BR/2BA	201	1380	\$499,000
	205	1388	\$630,000
	301	1380	\$549,000
	306	1351	\$645,000
	405	1388	\$675,000
	406	1351	\$665,000
Live/Work/1BA	504	1388	\$665,000
	411	1886	\$675,000

as of 1/12/2012



125 N. Raymond Ave. | Pasadena, CA 91103 | Sales Gallery 626.396.0800

4% BROKER CO-OP

THE SMART SALE BEGINS.

February 11th and 12th 9am-6pm

HOMES STARTING AT \$98K

STUDIO LOFTS, ONE-BEDROOM LOFTS AND TWO-BEDROOM LOFTS BETWEEN \$98K AND \$350K

A limited release of 40 loft-style homes will be available during this special sales event at Smart Corner. For best selection, bring in your clients **TODAY** to tour the models and prequalify before the Smart Sale begins. This stunning 19-story condominium tower features:

- Rooftop terrace with spa and barbecues
- Fully-equipped fitness center
- Prime location, just steps away from Petco Park and all of Gaslamp's hot spots

4% BROKER CO-OP.

GET A HEAD START ON THIS EXCLUSIVE EVENT
CALL **619.696.7000** TODAY TO SCHEDULE A TOUR OF THE PROPERTY,
VISIT SMARTCORNER.NET FOR MORE EVENT INFORMATION.

SMARTCORNER


SALES GALLERY **619.696.7000**
1080 PARK BOULEVARD, SUITE 1004
SAN DIEGO, CA 92101

POLARIS Sales and Marketing by Polaris Group — a California licensed broker. DRE license #01499250
The floorplans, elevations, renderings, features, finishes, specifications and availability are subject to change at any time. They should not be relied upon as representations, express or implied. The developer reserves the right to change floorplans, elevations, features, finishes, pricing and specifications at any time, without prior notice.

CURRENT UNITS AVAILABLE

	Unit	Floorplan	Sqft	Price
Studio/1ba	#203	A	466	\$98,000
	#206	A	472	\$98,000
	#306	A	462	\$99,000
	#709	A	472	\$119,000
	#712	A	495	\$122,000
	#1108	A	472	\$128,000
	#1305	A	466	\$129,000
	#1506	A	462	\$132,000
	#1709	C	495	\$145,000
1bd+den/1ba	#202	B	854	\$220,000
	#215	B	863	\$215,000
	#313	D	731	\$179,000
	#318	B	863	\$222,000
	#403	H	618	\$150,000
	#517	B	863	\$235,000
	#710	D	748	\$229,000
	#711	D	711	\$219,000
	#1414	F	592	\$172,010
2bd/2ba	#301	C	1,328	\$355,000
	#315	G2	1,422	\$355,000
	#407	E2	1,037	\$292,000
	#416	K	913	\$259,000
	#515	G2	1,422	\$375,000

5705 Hub St Los Angeles By Appt **NEW**
 \$469,500 3+2 CRAFTSMAN



Live in History! Fully restored Highland Park HPOZ 3 Bedroom, 2 Bath Classic Craftsman. All antique lighting, living room with faux fireplace & antique French screen, gleaming golden oak wood floors throughout living, dining and bedrooms, two baths, one character full bath with marble blue claw foot tub, pedestal sink and tile floor, master bedroom with modern bath and doorway outside to relaxing wood deck, new shaker kitchen w/Carrera counters, stainless appliances, central air and heat system, large laundry bonus room filled with light and windows. Redwood deck off master suite with a private large rear yard and mature avocado tree. Fully insulated and dry-walled 2 car garage for creative uses - additional open onsite parking.

HOUSING AMERICA REALTY
Marissa Solis
 Tel 323.316.9810
 DRE 00967624

1923 Del Paso Los Angeles Open Sat 11-4 **NEW**
 \$329,300 2+2 MODERN



Welcoming, Updated Modern Hillside Village home located in hills of El Sereno has amazing views of Los Angeles! Walk into airy open living space with lots of light and gleaming wood floors, new kitchen showcase clean lines, modern fixtures and new appliances, home is complete with two good bedrooms, updated full bath and enclosed laundry room. As an extra special bonus, this home boasts an incredible view of Los Angeles from its own back yard! Entertainers delight or a private oasis of reflection.

HOUSING AMERICA REALTY
Marissa Solis
 Tel 323.316.9810
 DRE 00967624

4906 Granada Los Angeles Open Sat 12-4 **NEW**
 \$399,500 2+1 SPANISH



Sun drenched and cheery this restored Spanish with two exterior decks, two bedrooms and two baths, character corner property with tiers of decks, yards and garage, attractive front yard with updated landscaping, welcoming entrance leads to open living room with fireplace, new shaker kitchen with Carrera marble counters, stainless appliances and gleaming wood floors, baths are renewed in modern design. Updated features include new central air/heat, custom wood decks and gates, outdoor slate tile, new electrical and plumbing systems.

HOUSING AMERICA REALTY
Marissa Solis
 Tel 323.316.9810
 DRE 00967624

5660 Hub St Los Angeles Open Sat 11-4 **NEW**
 \$479,500 3+2 MODERN



Walk to York, Walk to Fig, walk to the Metro. Done move in ready 3 bedroom 2 bath craftsman with a new huge rear deck for entertaining and large private yard! Period with a splash of modern, all three bedrooms open onto the private rear yard with custom glass doors. Highlights of this quality renovation include new kitchen with Caesar stone counter tops, custom cabinets, stainless appliances, New open living area and bedrooms with beautiful wood floors, new lighting, modern fixtures. Additional upgrades include new vinyl windows, new roof, new electrical, new plumbing and tankless water heater. Lots of space for outdoor entertaining and plenty of room, new Exterior has been renewed with brand new wood deck, updated landscaping and remodeled garage which can be used for creative use!! Breathtaking!

HOUSING AMERICA REALTY
Marissa Solis
 Tel 323.316.9810
 DRE 00967624


645 Romulo Los Angeles Open Sat 12-4 **NEW**
 \$314,000 2+2 MODERN



Playful Totally Restored View Craftsman perched above the street with lush landscaping. Manageable sized fully fenced yard with tandem parking in the rear. New floors, new modern shaker kitchen with Caesarstone counters and stainless steel appliances, formal dining room, 2 bedrooms, 1.5 baths. Both baths are new with modern pedestals sinks. New elegant lighting throughout. New roof, siding, copper plumbing, central air and heat, interior and exterior paint. Your affordably priced roost above it all. Just move on in!

HOUSING AMERICA REALTY
Marissa Solis
 Tel 323.316.9810
 DRE 00967624

2134 Kent St Los Angeles By Appt **NEW**
 \$499,400 3+2 Remodeled



Beautifully remodeled Bungalow breathes new life! Spacious open living space is modern and updated, light cheery livingroom, three generous bedrooms, two baths, new kitchen with custom cabinets, marble counters and stainless appliances, french doors from bedrooms lead to large wood deck with city lights views! Additional highlights to fall in love with include finished basement for extra family room and private enclosed yard with separate bonus room perfect to work from home in!

HOUSING AMERICA REALTY
Marissa Solis
 Tel 323.316.9810
 DRE 00967624

1686 N Marengo Pasadena Open Sat 12-4 **NEW**
 \$314,000 2+1 MODERN



Welcoming open floor plan showcasing bright living room, gleaming dark wood floors, new kitchen with clean lines, Caesarstone counters and new stainless steel appliances, dining nook with windows and views of back yard, two bedrooms, character full bath with tile pattern floors and accent fixtures, spacious enclosed back yard and one car garage - perfect to enjoy outdoor meals with the family! Additional highlights: landscaping with a modern desert feel, great for water conservation and arid California weather, updated plumbing, electric system and air conditioning/heating system. New windows, trendy fixtures and new wood fencing.

HOUSING AMERICA REALTY
Marissa Solis
 Tel 323.316.9810
 DRE 00967624

662 Fraser Los Angeles By Appt **NEW**
 \$269,000 2+2 SPANISH



Renewed Spanish Character home located on quiet residential area has updated features throughout. Inviting enclosed entrance, restored wood floors, new kitchen with Caesar stone counters and new wood cabinets, stainless steel appliances, new revitalized tiled bath with new fixtures, vanity and sink, three bedrooms, updated laundry area, interior and exterior paint, beautiful Spanish style tile roof, lush low maintenance landscaping. Affordable price for such upgrading home! Ready to move in!!

HOUSING AMERICA REALTY
Marissa Solis
 Tel 323.316.9810
 DRE 00967624

REALESTATEGROUPLA.COM

MULTI-PROPERTY



OPEN HOUSE – Sunday, February 12, 1–4pm

4935 Gloria Avenue • ENCINO

www.4935Gloria.com

- 6 Bedrooms, 7 Bathrooms
- Apx 5,374 sf home with apx 651 sf guesthouse
- Apx 18,862 sf lot
- Walled & Gated with entertainer's backyard

Now Offered at \$1,895,000

Previously Offered at \$2,200,000



OPEN HOUSE – Sunday, February 12, 1–4pm

6538 Orion Avenue • VAN NUYS

www.6538Orion.com

- 4 Bedrooms, 2.75 Bathrooms
- Apx 2,334 sf home on apx 12,044 sf lot
- Pool plus 2-car garage
- Located in the heart of Midvale Estates

Offered at \$729,000



SHOWN BY APPOINTMENT

20339 Delita Drive • WOODLAND HILLS

www.20339Delita.com

- 5 Bedrooms, 4.25 Bathrooms
- Apx 5,751 sf home on apx 16,890 sf lot
- 1960s Party Pad with two levels
- Tiered patios, pool & 180° views

Offered at \$870,000

guyviolas

guy@guyviolas.com
818.516.0011

cathycressy

cathycressy@sbcglobal.net
818.359.1101

rayross

realestateray@aol.com
818.438.9101

Ewing &
Associates

Sotheby's
INTERNATIONAL REALTY



Guy Violas: CADRE#00986793. Blair Thompson: CADRE# 114308. Cathy Cressy: CADRE#01028339. Ray Ross: CADRE#01175977. We do not guarantee accuracy of square footage, lot size, condition, features, or income provided by sellers, third parties, or public records. Buyers are advised to verify accuracy of all information through independent inspection by professionals. Buyers & sellers are advised to seek legal and tax advice when purchasing or selling real property. Broker does not guarantee specific school availability. Each Office is Independently Owned And Operated.

BEVERLY HILLS ADJ. DUPLEX

BEVERLY CENTER - MIRACLE MILE



8561 W OLYMPIC BLVD

Sunday, February 5, 2012 from 10: AM to 1:00 PM

2 blocks West of La Cienega Blvd on Olympic. B.H. adj duplex, 3 bed, 2 bath, 3 car garage, backyard, vacant and ready to move-in. Newly renovated units flooded with natural light, new energy efficient dual paned windows and recessed lighting. Formal dining room, living room, breakfast area, fireplace, hardwood

floors, granite countertops, new stainless steel kitchen appliances, new washer/dryer in each unit and central air/heat. Located near shopping, transportation, parks and houses of worship.

Offered At **\$1,049,000**



Faraj Kerendian
323-640-7000

1058 S. Holt Ave
Los Angeles, CA
www.8561olympic.com

Spanish Charmer in BHPO

\$895,000



1669 BENEDICT CANYON DRIVE
Open House Sunday, February 5th, 1:00PM – 3:00PM



Absolutely charming Spanish “Hacienda Style” on an oversized lot with expansive courtyard/patio area, fountain and hillside views on prestigious Benedict Canyon Drive. With 1835sqft boasting hardwood floors, high ceilings in many rooms, updated

kitchen & bathrooms, home office, two large bedrooms with courtyard/patio access, oversized fireplace and custom lighting. Close to downtown Beverly Hills, Studio City and Burbank. www.1669benedictcanyon.com



Bruce Bartkow
 (310) 623-1315

kw | KELLER WILLIAMS
 REALTY

9000 Sunset Boulevard, Suite 1100 West Hollywood, CA 90069
www.1669benedictcanyon.com

Exquisitely Built Property

BEVERLYWOOD VICINITY



\$2,395,000

Open House Sunday 1:00 - 4:00 p.m.

1728 S DURANGO AVE

Exquisite & Newly built dream home with only the highest quality materials and attention to detail. Solid wood clad windows. Solid Walnut floors throughout. Enter 10 foot high ceilings. Flows into elegant and large dining room. Knock out cooks Kitchen, to

much to mention. All Viking SS appliances Large pantry. Open and huge family room with full wall of built in book shelves and desks Huge master suite with 2 fully equipped walk in's. Much much more. Must see.

Joseph Mayberg

310-489-2395 310-275-5156

1180 S. Beverly Drive. Suite 710

Los Angeles, Ca 90035

Broker does not guarantee the accuracy of square footage, lot size or other information concerning condition or features of property provided by seller or other sources, and the buyer is advised to independently verify the accuracy of that information with inspections & appropriate professionals.

BEVERLYWOOD VICINITY

Once in a Lifetime Opportunity!

\$2,295,000



2125 DUXBURY CIR
WWW.2125DUXBURY.COM



Don't miss out on owning one of the BIGGEST lots on the BEST street in Beverlywood!!! This is the home for a family that loves to entertain, or for the person that is looking for that ONCE IN A LIFETIME opportunity to build the home of their dreams. Amazing and spacious

property is located on the renowned tree-lined block of Duxbury Circle. This 3500+Sf home sits on a 14,000+ft lot with a huge backyard and pool. All bedrooms are on the top floor with attached bathrooms.



Meir Kroll
 310-341-4393



1180 S. Beverly Drive Suite 710 Los Angeles, CA 90035
 Shown by Appointment

Northridge Compound Available

\$6,800



NORTHBRIDGE

17609 Rayen Street
Available By Appointment Only



This beautiful home sits on a large private corner lot and is just shy of a half-acre. This is family living at its finest with a large yard that includes a rose garden, dining patio, heated salt water pool/spa and a built-in barbeque island and fire pit. This 6 bedroom, 7 bath

home features: Huge kitchen with slate floor, granite counters, wood cabinets, large center island w/ prep sink, breakfast bar, stainless steel appliances and double-oven and double-refrigerators, and much more.



Ikem T. Chukumerije
323-350-8297
310-927-2344

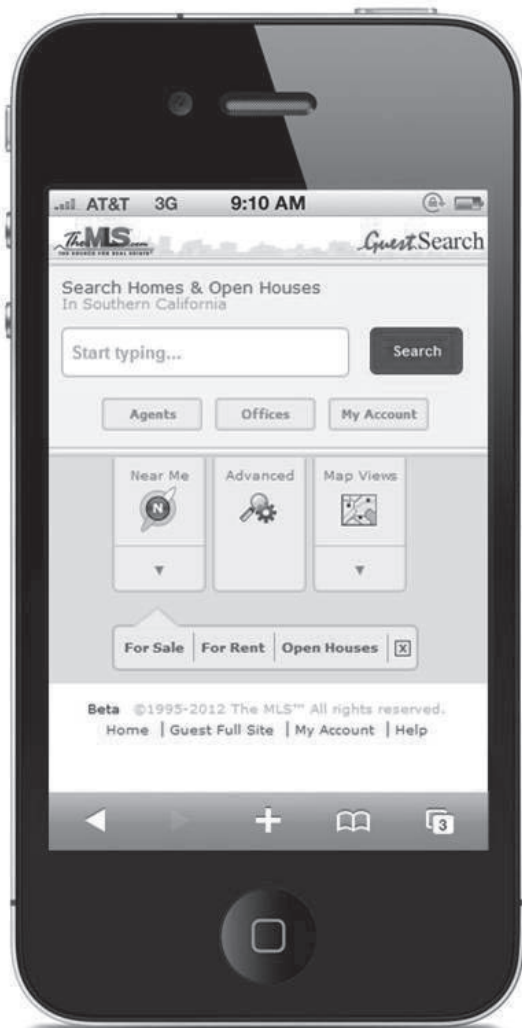




The **MLS**.com™
THE SOURCE FOR REAL ESTATE™

If You're looking for the Most Accurate and Convenient
Real Time Access to **ALL** Properties For Sale in Southern California
Go To THE SOURCE

The MLS™ Goes Mobile!



Try Our Beta Site:



<http://TheMLS.com/m>

Locate Properties Throughout Southern California with **ANY** Smart-Phone!

Try it... Scan now to see properties nearest you!

SCAN ME



FOR INSTANT PRICE, PICS & INFO

TEXT: **MLS1001** TO THE #: **85377**

Powered By Mobile Real Estate ID™

Standard text messaging rates apply

*The***MLS**.com
THE SOURCE FOR REAL ESTATE™

SCAN OR TEXT
To Get **DETAILED**
Property Information & Pictures



FOR SALE
FOR INSTANT PRICE, PICS & INFO
TEXT: **MLS1001** TO THE #: **85377**
Powered By Mobile Real Estate ID™



A Free Service
Now Available
To Members of The MLS & Their Clients

*The***MLS**.com
THE SOURCE FOR REAL ESTATE™

ELEGANT ENCLAVE TRADITIONAL

PACIFIC PALISADES



16802 CALLE DE SARAH

Open: Sunday, November 6, 2011 1:00PM - 4:00PM

Elegant 5 Bedroom traditional home in 24-hr. guarded "ENCLAVE." Summit Club membership w/pool, tennis, basketball, spa, gym. Situated on level landscaped lot w/private backyd. Marble foyer leads to magnificent 2-story living w/ Fplc., soaring ceilings & wall of windows & French doors add light thru-out home. Dining Rm w/butler's pantry an entertainer's dream!

Opening to Family Rm., Gourmet Kit. w/sunny eat-in bay area overlooking garden. 1st floor BR. Master Suite w/Fplc. in bedroom & bath.

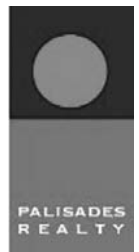
Offered At **\$2,189,000**



Susan Wales
310-428-9155

15135 Sunset Blvd. #280
Pacific Palisades

Broker/Agent does not guarantee accuracy of info re: conditions/features of property provided by seller or obtained from Public Records & other sources. Buyer advised to indepe. verify accuracy of all info. thru personal inspect. & w/appropriate professionals. Info. deemed reliable but not guaranteed.



theMLS.com WEEKEND EDITION

Find Homes & Open Houses in Southern California
HOMES & OPEN HOUSES
 YOUR MOST TRUSTED AND UP-TO-DATE REAL ESTATE RESOURCE

822 South Robertson Boulevard, Ste 202
 Los Angeles, CA 90035
 Tel: 310.358.1833
 Fax: 310.360.1730
 Email Ads: production@themls.com

Ad materials on CD also may be sent to and/or dropped off at: 822 S. Robertson Blvd., Suite 202, Los Angeles, CA, 90035. (NOTE: We do NOT accept native files such as Quark, Illustrator, InDesign, etc. Those types of files should be converted to PDF Format. We do NOT accept camera ready ads, film or reflective artwork, or files containing RGB or LAB images.)

Combined L.A./Westside MLS, Inc.
The MLS®/CLAW

Chief Executive Officer
 Annie Ives

Production Manager
 Mark Sternberg x145

Production Staff
 Michelle Morton
 Maria Anelli
 Charlie Ortega

Account Executives
 Manny Carrillo x136
 Josh Brill x130
 Cesar Macias x159

The MLS Weekend Homes & Open Houses™ Terms & Conditions
 The MLS®/CLAW reserves the right to change deadlines and pricing at any time and for any reason.

The MLS Weekend Homes & Open Houses™ is published and distributed weekly by The MLS®/CLAW, 822 S. Robertson Blvd., #202, Los Angeles, CA, 90035, 310.358.1833 voice, 310.360.1730 fax, www.themls.com. Advertising information can be obtained by contacting the publisher.

All properties and services advertised are subject to prior sale, withdrawal, or change without notice.

The MLS®/CLAW reserves the right to refuse any advertising it deems unsuitable and to edit any advertising.

The MLS®/CLAW may, in its sole discretion, accept paid advertising for any of its publications (whether paper, online, electronic, or in any other form or medium). Any such advertising shall comply with such guidelines for advertising as may be adopted or revised by CLAW from time to time. No such advertising shall include statistical or numerical comparisons of performance between or among different real estate brokerage firms, brokers, or agents.

The MLS Weekend Homes & Open Houses™ is not licensed as a real estate broker and does not represent, assist, or provide services to persons in the purchase, sale, rental, financing, or appraisal of real property or other transactions. Persons desiring such services should consult appropriate professionals.

By placing any advertising in The MLS Weekend Homes & Open Houses™, advertisers agree to indemnify and hold the publisher and its affiliates harmless from and against all claims, losses, liabilities, damages, costs, and expenses, including attorneys' fees, asserted against or incurred by the publisher and its affiliates, associated with the property or services advertised, including without limitation when due to the negligence or other fault of the publisher or its affiliates.

The publisher and its affiliates are not liable or responsible for any claims, losses, liabilities, damages, costs, or expenses of any kind, arising in whole or in part from the text, graphics, or representation of any advertising published herein, the nature, condition, value, or desirability of any property or services advertised, any errors, omissions, out of date information, or misprints, or any associated transaction. The publisher and its affiliates specifically disclaim any such liability or responsibility.

All housing and related services advertised in The MLS Weekend Homes & Open Houses™ are subject to the U.S. Fair Housing Act of 1968 and Fair Housing Amendments of 1988, as amended, and other applicable laws, which make it a violation of law to discriminate against any person because of race, color, religion, sex, handicap, familial status, or national origin, in the sale or rental of housing, advertising the sale or rental of housing, financing of housing, provision of real estate brokerage services, or appraisal of housing.

Copyright © 2009. All rights reserved. Reproduction in whole or part, in any form, without the prior written consent of the publisher, is strictly prohibited. Full terms and conditions may be obtained by contacting the publisher in writing. The publisher reserves the right to modify such terms and conditions at any time without prior notice. No person has authority to vary any such terms and conditions, verbally or in writing, without written authority from the publisher.

SHOWCASE ADS

OPEN HOUSES

SAT SAN FERNANDO VALLEY	
Lake Balboa	26
Woodland Hills	26

BY APPOINTMENT

WESTSIDE / LOS ANGELES	
Hollywood Hills East	28
Sunset Strip - Hollywood Hills West	28
West Hollywood Vicinity	28

SUN WESTSIDE / LOS ANGELES

Beverly Center-Miracle Mile	26
Beverly Hills	26
Beverly Hills Post Office	26
Beverlywood Vicinity	26
Culver City	26
Hancock Park-Wilshire	26
Hollywood Hills East	27
Malibu	27
Marina Del Rey	27
Pacific Palisades	27
Park Hills Heights	27
Sunset Strip - Hollywood Hills West	27
West L.A.	27
Westwood - Century City	27

NEW LISTINGS (1-7 days)

WESTSIDE / LOS ANGELES	
Brentwood	28
Sunset Strip - Hollywood Hills West	28

SUN SAN FERNANDO VALLEY

Encino	27
West Hills	27



On the front cover:
 Hilton & Hyland

DIRECTORIES

Open Houses - Saturday	16-17
Open Houses - Sunday	17-19
New Listings	20-25

PREMIUM ADVERTISERS

Raymond Renaissance	3
Smart Corner	4

FEATURED LISTINGS

see *Inside Front Cover*
 see *Inside Back Cover*

www.themls.com

The **MLS®/CLAW**, also known as the Combined L.A./Westside Multiple Listing Service, Inc., is the most reliable and most accurate source of real estate information for the Greater Los Angeles Metropolitan area. **The MLS®** owns and manages the most complete and up-to-date database of real estate listings.

WWW.TheMLS.COM

IFC - INSIDE FRONT COVER, IBC - INSIDE BACK COVER, BC - BACK COVER

OPEN HOUSES DIRECTORY

REFRESHMENTS * LUNCH * THEMLS PRO™ OPEN HOUSES

OPEN HOUSES DIRECTORY

SATURDAY WESTSIDE / LOS ANGELES

BEVERLY CENTER-MIRACLE MILE		Single Family	
12-577793	633B2 Sa 1-4	6258 WARNER DR	\$1,249,500 4+3 p.IBC
12-574725	633C3 Sa 12-2	800 S BURNSIDE AVE	\$995,000 3+2 *
12-576693	633B4 Sa 1-4	5570 SATURN ST	\$575,000 3+1 *
BEVERLY CENTER-MIRACLE MILE		Income	
12-578415	633B4 Sa 1-4	1422 CARMONA AVE	\$699,000 *
BEVERLY HILLS		Condo / Co-op	
11-570837	592H7 Sa 1-4	447 N DOHENY DR #501	\$3,700,000 3+4.5 *
11-542355	633A2 Sa 11-5	225 S HAMILTON DR #306	\$1,249,000 3+2.5 *
11-542357	633A2 Sa 11-5	225 S HAMILTON DR #108	\$1,099,000 3+2.5 *
11-568577	633A2 Sa 11-5	225 S HAMILTON DR #301	\$1,079,000 2+2.5 *
10-493819	592H7 Sa 1-4	447 N DOHENY DR #103	\$995,000 1+1.5 *
11-542351	633A2 Sa 11-5	225 S HAMILTON DR #107	\$975,000 2+2.5 *
BEVERLYWOOD VICINITY		Single Family	
12-578441	633A5 Sa 1-4	1843 STEARNS DR	\$585,000 2+1 *
CULVER CITY		Single Family	
12-576799	672E4 Sa 1-4	4124 BLEDSOE AVE	\$629,000 3+1.5 *
DOWNTOWN L.A.		Condo / Co-op	
12-573581	635D5 Sa 1-4	900 W OLYMPIC BLVD #51F	\$9,300,000 3+3.5 *
12-573577	635D5 Sa 1-4	900 W OLYMPIC BLVD #47G	\$4,472,000 3+3.5 *
12-573579	635D5 Sa 1-4	900 W OLYMPIC BLVD #47E	\$2,821,000 3+3.5 *
12-573575	635D5 Sa 1-4	900 W OLYMPIC BLVD #45D	\$2,220,000 3+3 *
12-573587	635D5 Sa 1-4	900 W OLYMPIC BLVD #29G	\$2,100,000 2+2.5 *
12-573585	635D5 Sa 1-4	900 W OLYMPIC BLVD #38H	\$1,786,000 2+2.5 *
12-573573	635D5 Sa 1-4	900 W OLYMPIC BLVD #30A	\$1,558,000 2+2.5 *
12-573571	635D5 Sa 1-4	900 W OLYMPIC BLVD #27C	\$1,432,200 2+2.5 *
12-573583	635D5 Sa 1-4	900 W OLYMPIC BLVD #31I	\$1,266,000 1+2 *
12-573569	635D5 Sa 1-4	900 W OLYMPIC BLVD #37G	\$990,000 1+1.75 *
12-573567	635D5 Sa 1-4	900 W OLYMPIC BLVD #31F	\$852,000 1+1.5 *
HANCOCK PARK-WILSHIRE		Single Family	
12-572801	633H1 Sa 1-4	206 N WILTON PL	\$790,000 3+2 *
12-578811	633F3 Sa 12-3	1032 S WINDSOR	\$650,000 3+2 *
HANCOCK PARK-WILSHIRE		Condo / Co-op	
12-574483	633F2 Sa 1-4	4460 WILSHIRE #708	\$919,000 2+2.5 *
HOLLYWOOD		Lease	
12-578959	593F4 Sa 11-5	1480 VINE ST #1802	\$8,500 2+2 *
HOLLYWOOD HILLS EAST		Single Family	
12-577427	593G2 Sa 1-4	5916 TUXEDO TER	\$850,000 3+2 *
LOS ANGELES SOUTHWEST		Single Family	
12-578329	703H1 Sa 1-4	2016 W 78TH ST	\$319,000 3+2 *
12-578427	673D6 Sa 2-4	4267 W 59TH ST	\$265,000 3+2 *
11-546709	674A4 Sa 1-5	1237 W 51ST PL	\$259,900 4+2 *
12-578677	673J6 Sa 1-4	1453 W 62ND ST	\$239,900 2+1 *
11-571583	673J7 Sa 1-5	1458 W 65TH ST	\$180,000 2+1 *
LOS FELIZ		Single Family	
12-575113	594C2 Sa 2-5	3641 HOLBORO DR	\$2,099,000 0+0 *
MID LOS ANGELES		Single Family	
12-572887	633F5 Sa 2-5:30	1603 VIRGINIA RD	\$589,850 3+2.5 *
MOUNT WASHINGTON		Single Family	
11-570381	594J6 Sa 12-4	645 ROMULO ST	\$299,400 2+2 *
PACIFIC PALISADES		Single Family	
11-550725	630G1 Sa 1-4	16814 CALLE DE SARAH	\$2,498,000 5+5.5 *
12-578337	630H5 Sa 1-4	16821 W SUNSET	\$949,000 3+2 *
PALMS - MAR VISTA		Single Family	
11-568591	672C5 Sa 1-4	4277 MOORE ST	\$549,900 2+1 *
PARK HILLS HEIGHTS		Single Family	
12-577153	673E5 Sa 2-5	5464 HILLCREST DR	\$325,000 3+1 *
11-570387	673H4 Sa 1-5	1822 W 49TH ST	\$290,000 3+2 *
PARK HILLS HEIGHTS		Condo / Co-op	
12-574751	673A7 Sa 12-4	6616 SPRINGPARK AVE #6	\$385,000 3+2 *
12-574749	673A7 Sa 12-4	6624 SPRINGPARK AVE #5	\$370,000 2+2 *
12-576479	673A7 Sa 12-4	6616 SPRINGPARK AVE #8	\$365,000 3+2 *
12-574745	673A7 Sa 12-4	6624 SPRINGPARK AVE #4	\$335,000 2+2 *
12-574747	673A7 Sa 12-4	6616 SPRINGPARK AVE #4	\$299,000 2+1 *
PLAYA DEL REY		Single Family	
12-575475	702A2 Sa 1-4	6221 PACIFIC AVE	\$1,699,000 3+2.5 *
PLAYA DEL REY		Condo / Co-op	
12-577379	702C3 Sa 1-4	8125 REDLANDS ST #107	\$449,000 3+2.5 *
12-577539	702C3 Sa 1-4	8675 FALMOUTH AVE #304	\$325,000 1+1 *
11-558167	702C3 Sa 1-4	8500 FALMOUTH AVE #2105	\$299,900 1+1 *
11-522317	702C3 Sa 1-4	7742 REDLANDS ST #H1026	\$279,000 2+2 *
PLAYA VISTA		Condo / Co-op	
12-574689	702D1 Sa 3-5	13173 PACIFIC PROMENADE BLDG. 2C UNIT 240	\$614,900 2+3 *

SANTA MONICA Single Family

12-573063	671G4 Sa 1-4	2704 HIGHLAND AVE	\$2,249,000 3+3 *
11-569913	671F4 Sa 11-2	2618 2ND ST- FRONT HOUSE PLUS 2 UNITS	\$1,389,000 7+6 *
SANTA MONICA Condo / Co-op			
11-511227	631E7 Sa 1-4	917 19TH ST #103	\$1,549,000 3+2.5 *
11-544361	631E7 Sa 1-4	917 19TH ST #105	\$1,549,000 3+2.5 *
11-499405	631E7 Sa 1-4	917 19TH ST #106	\$1,495,000 3+2.5 *
11-542751	631E7 Sa 1-4	917 19TH ST #104	\$1,495,000 3+2.5 *
11-547263	631F6 Sa 1-5	853 21ST ST #102	\$1,325,000 2+2.5 *
11-564747	631F6 Sa 1-5	853 21ST ST #106	\$1,299,000 1+1.5 *
11-564743	631F6 Sa 1-5	853 21ST ST #101	\$1,295,000 2+2.5 *
11-536629	671E1 Sa 1-4	1021 12TH ST #101	\$659,000 3+2 *
SANTA MONICA Lease			
12-575847	631E5 Sa 1-4	249 23RD ST	\$10,500 4+3 *
12-573065	671G4 Sa 1-4	2704 HIGHLAND AVE	\$8,900 3+3 *
SILVER LAKE - ECHO PARK Single Family			
11-563175	594D4 Sa 1-4	2483 LINDSAY LN	\$1,299,000 4+2.5 *
11-566333	634E1 Sa 11-2	1007 LAVETA TER	\$399,000 2+1 *
SUNSET STRIP - HOLLYWOOD HILLS WEST Single Family			
12-575663	593C4 Sa 1-4	7661 CURSON TER	\$5,495,000 5+5 *
11-566131	593D4 Sa 1-4	1841 OUTPOST DR	\$2,149,000 5+3.5 *
SUNSET STRIP - HOLLYWOOD HILLS WEST Lease			
12-577809	593A4 Sa 2-4	8326 KIRKWOOD DR	\$3,450 3+2 *
12-577809	593A4 Sa 2-4	8326 KIRKWOOD DR	\$3,450 3+2 *
VENICE Single Family			
12-574339	672A5 Sa 2-4	2551 WALNUT AVE	\$684,900 4+2 *
WEST L.A. Single Family			
12-575599	631J6 Sa 1-4	1741 S BUNDY DR	\$549,000 2+1 *
WEST L.A. Condo / Co-op			
12-574755	632C7 Sa 12-4	2884 SAWTELLE #119	\$350,000 2+2 *
WEST L.A. Lease			
12-575363	632B6 Sa 1-4	2047 CORINTH AVE	\$4,000 4+3.25 *
WESTCHESTER Single Family			
12-578101	702J1 Sa 2-5	5934 ABERNATHY DR	\$519,000 2+1 *
WESTWOOD - CENTURY CITY Condo / Co-op			
11-552955	632C4 Sa 1-4	1817 PROSSER AVE #404	\$799,000 2+3 *
11-565871	6323D Sa 12-4	10345 WILKINS AVE #102	\$759,000 2+2.5 *
11-558041	632C4 Sa 1-4	1817 PROSSER AVE #103	\$685,000 2+2 *
11-565599	632C4 Sa 1-4	1817 PROSSER AVE #401	\$685,000 2+2 *
11-552951	632C4 Sa 1-4	1817 PROSSER AVE #301	\$675,000 3+2 *
11-568709	632C4 Sa 1-4	1817 PROSSER AVE #201	\$665,000 3+2 *
11-552961	632C4 Sa 1-4	1817 PROSSER AVE #403	\$660,000 2+2 *
12-578937	632C4 Sa 1-4	1943 PELHAM AVE #PH2	\$629,000 3+2 *
11-565591	632C4 Sa 1-4	1817 PROSSER AVE #204	\$595,000 2+2 *
11-557083	632C4 Sa 1-4	1817 PROSSER AVE #305	\$525,000 2+2 *

SATURDAY SAN FERNANDO VALLEY

CALABASAS Single Family			
12-578313	589A7 Sa 1-4	809 THORNHILL RD	\$779,000 3+1.75 *
EAST VAN NUYS Single Family			
12-578681	532A4 Sa 1-5	14223 RUNNYMEDE ST	\$339,900 4+2 *
ENCINO Single Family			
11-559273	561C2 Sa 2-5	5450 LOUISE AVE	\$1,595,000 9+5 *
ENCINO Lease			
11-566065	561C2 Sa 2-5	5450 LOUISE AVE	\$8,900 9+5 *
LAKE BALBOA Single Family			
12-578061	531C4 Sa 1-4	7238 WISH AVE	\$419,900 4+2 *
12-576011	531B4 Sa 1-4	7252 WHITE OAK AVE	\$319,900 3+2 p.26
NORTH HOLLYWOOD Condo / Co-op			
12-572797	562J3 Sa 1-4	5016 BAKMAN AVE #410	\$445,000 2+2.5 *
12-576787	562J3 Sa 1-4	5016 BAKMAN AVE #104	\$364,000 2+2.5 *
11-566023	562J3 Sa 1-4	5016 BAKMAN AVE #203	\$349,000 2+2.5 *
NORTH RIDGE Single Family			
12-573453	501B5 Sa 12-2	17332 SUPERIOR ST	\$639,000 5+3 *
SHERMAN OAKS Single Family			
12-578235	562A1 Sa 1-4	5705 VESPER AVE	\$523,000 3+1.5 *
SHERMAN OAKS Lease			
12-576435	561H5 Sa 1-4	15025 DEL GADO DR	\$3,875 3+3 *
STUDIO CITY Single Family			
11-558287	562F5 Sa 1-3	4313 WILKINSON AVE	\$699,000 3+2 *
TARZANA Single Family			
12-577935	560G1 Sa 1-4	5813 VANALDEN AVE	\$529,900 4+2 *
WOODLAND HILLS Single Family			
12-574263	560E1 Sa 1-4	5940 WINNETKA AVE	\$1,285,000 5+5.5 p.26

SATURDAY

REFRESHMENTS X LUNCH
THEMLS PRO™ OPEN HOUSES

OPEN HOUSES DIRECTORY

IFC - INSIDE FRONT COVER, IBC - INSIDE
BACK COVER, BC - BACK COVER

SATURDAY		OTHER AREAS	
EAST LOS ANGELES <i>Single Family</i>			
11-570407	635G7 Sa 11-4	662 FRASER AVE	\$259,100 2+1 *
GLENDALE <i>Condo / Co-op</i>			
11-572217	564H6 Sa 1-4	1517 E GARFIELD AVE #22	\$145,000 1+1 *
LA PUENTE <i>Single Family</i>			
12-573673	638C5 Sa 9-1	527 MELHAM AVE	\$270,000 4+2 *
PASADENA <i>Single Family</i>			
12-575917	566B2 Sa 11-1	1040 N WILSON AVE	\$679,000 5+4 *
REDONDO BEACH <i>Condo / Co-op</i>			
12-573213	733A6 Sa 1-3	2006 PLANT AVE #B	\$825,000 4+2.5 *
TEMPLE CITY <i>Condo / Co-op</i>			
11-568013	596J2 Sa 1-4	6166 TEMPLE CITY BLVD	\$670,000 3+3 *
TORRANCE <i>Single Family</i>			
12-572935	793A3 Sa 1-4	339 CALLE DE ANDALUCIA	\$1,079,000 4+3 *
OUT OF AREA <i>Single Family</i>			
12-578767	738C3 Sa 1-4	2160 WINTERWOOD DR	\$745,000 4+3 *
12-576943	595B3 Sa 12-4	4906 GRANADA ST	\$399,500 2+2 *
11-568151	635E2 Sa 11-4	1923 DEL PASO AVE	\$329,300 2+2 *
OUT OF AREA <i>Condo / Co-op</i>			
12-573175	787B5 Sa 12-4	4837 S WINNERS CIR #E	\$309,000 2+2 *
11-561677	595EA Sa 1-3	4589 VIA MARISOL #161	\$229,000 2+1 *
12-578947	893B2 Sa 9-1	3 PICA FLOR #65	\$119,000 2+1 *
OUT OF AREA <i>Lease</i>			
12-578841	446-D Sa 10-12	28013 ALTA VISTA AVE	\$2,800 3+3 *

SUNDAY		WESTSIDE / LOS ANGELES	
BEL AIR - HOLMBY HILLS <i>Single Family</i>			
12-574403	592B7 Su 1-4	347 ST CLOUD RD	\$9,900,000 5+4 *
12-578133	631H1 Su 1-4	100 N THURSTON AVE	\$2,195,000 4+4.5 *
11-566487	591H1 Su 1-4	15454 HAMNER DR	\$1,199,000 4+3 *
12-577839	592A4 Su 1-4	1628 N BEVERLY GLEN BLVD	\$549,000 2+2 *
BEVERLY CENTER-MIRACLE MILE <i>Single Family</i>			
12-578643	593A7 Su 1-4	328 N FLORES ST	\$2,399,000 4+5.5 *
12-575279	633A2 Su 1-4	6402 LINDENHURST AVE	\$1,775,000 4+4.5 *
12-574671	632J1 Su 12-3	452 S SHERBOURNE DR	\$1,295,000 3+2 *
12-574725	633C3 Su 1-4	800 S BURNSIDE AVE	\$995,000 3+2 *
12-578505	633C4 Su 1-4	1174 CARMONA AVE	\$989,000 4+4 *
12-573701	593D7 Su 1-4	7155 OAKWOOD AVE	\$899,000 3+2 p.26 *
12-575945	633B3 Su 1-4	6160 SAN VICENTE BLVD	\$899,000 3+2 *
12-572597	633C3 Su 1-3	1101 S SIERRA BONITA AVE	\$795,000 3+2 *
11-568605	593D7 Su 1-3	7264 ROSEWOOD AVE	\$649,000 3+2 *
12-576693	633B4 Su 12-3	5570 SATURN ST	\$575,000 3+1 *
11-566073	633B4 Su 1-4	5645 PACKARD ST	\$549,000 2+1 *
BEVERLY CENTER-MIRACLE MILE <i>Income</i>			
12-578963	632J3 Su 10-1	8561 W OLYMPIC BLVD	\$1,049,000 p.7 *
12-578889	633C4 Su 1-3	1338 S DUNSMUIR AVE	\$975,000 *
12-578415	633B4 Su 12-3	1422 CARMONA AVE	\$699,000 *
BEVERLY CENTER-MIRACLE MILE <i>Lease</i>			
11-561401	633C3 Su 1-4	800 S BURNSIDE AVE	\$5,000 3+2 *
11-558547	633B3 Su 1-4	6160 SAN VICENTE BLVD	\$4,500 3+2 *
BEVERLY HILLS <i>Single Family</i>			
11-554469	592E6 Su 1-5	1012 N BEVERLY DR	\$6,495,000 5+6.5 p.IFC *
11-554469	592E6 Su 1-5	1012 N BEVERLY DR	\$6,495,000 5+6.5 p.26 *
11-566793	632H2 Su 1-4	152 S ALMONT DR	\$2,895,000 5+5.5 *
12-577867	632G2 Su 1-4	272 S CANON DR	\$1,299,000 3+2 p.26 *
12-576049	632J2 Su 1-4	220 S WILLAMAN DR	\$1,220,000 3+2 *
BEVERLY HILLS <i>Condo / Co-op</i>			
11-570837	592H7 Su 1-4	447 N DOHENY DR #501	\$3,700,000 3+4.5 *
12-576283	632H2 Su 1-4	130 N SWALL DR #PH1	\$1,449,000 3+3.5 *
11-542355	633A2 Su 11-5	225 S HAMILTON DR #306	\$1,249,000 3+2.5 *
11-542357	633A2 Su 11-5	225 S HAMILTON DR #108	\$1,099,000 3+2.5 *
11-568577	633A2 Su 11-5	225 S HAMILTON DR #301	\$1,079,000 2+2.5 *
10-493819	592H7 Su 1-4	447 N DOHENY DR #103	\$995,000 1+1.5 *
11-542351	633A2 Su 11-5	225 S HAMILTON DR #107	\$975,000 2+2.5 *
BEVERLY HILLS POST OFFICE <i>Single Family</i>			
11-565715	592D2 Su 1-4	9525 HIGHRIDGE DR	\$2,439,000 5+5 *
12-578641	592D4 Su 1-4	1657 SAN YSIDRO DR	\$1,199,000 3+2 *
11-561937	592F4 Su 1-4	1601 LINDACREST DR	\$1,095,000 3+2.5 p.26 *
11-561937	592F4 Su 1-4	1601 LINDACREST DR	\$1,095,000 3+2.5 p.26 *
12-575823	592B4 Su 1-3	1669 BENEDICT CANYON DR	\$895,000 2+2 p.8 *
12-577843	592C3 Su 1-4	9806 PORTOLA	\$895,000 2+2 p.26 *
BEVERLYWOOD VICINITY <i>Single Family</i>			
11-566595	632H4 Su 1-4	1728 S DURANGO AVE	\$2,370,000 7+6.5 p.9 *
12-577441	633A4 Su 1-4	6063 CASHIO ST	\$645,000 4+3.5 *

BEVERLYWOOD VICINITY		Condo / Co-op	
12-578695	632F3 Su 1-4	1167 ROXBURY DR #308	\$615,000 2+2.5 *
12-576251	632J4 Su 1-4	1240 S CORNING ST #205	\$449,900 2+2 p.26 *
BRENTWOOD <i>Single Family</i>			
11-561589	631G5 Su 1-4	12220 DOROTHY ST	\$2,099,000 4+4 *
11-561271	631F3 Su 1-4	12800 N BRISTOL CIR	\$1,750,000 3+3 *
12-578879	591E4 Su 1-4	2202 CANYONBACK RD	\$1,550,000 2+3 *
BRENTWOOD <i>Condo / Co-op</i>			
11-556831	631G5 Su 2-4	12218 MONTANA AVE #206	\$1,250,000 2+2.5 *
11-568473	631H4 Su 1-4	11921 DOROTHY ST #PH3	\$1,035,000 3+2.5 *
12-577907	631H4 Su 1-4	1000 GRANVILLE AVE #101	\$999,000 2+1.75 *
12-574085	631H5 Su 1-4	1120 GRANVILLE AVE #201	\$699,000 2+3 *
12-577113	631H5 Su 1-5	11920 GOSHEN AVE #202	\$529,999 2+2.5 p.IBC *
BRENTWOOD <i>Lease</i>			
11-568475	631H4 Su 1-4	11921 DOROTHY ST #PH3	\$5,000 3+2.5 *
CHEVIOT HILLS - RANCHO PARK <i>Single Family</i>			
11-564989	632E6 Su 1-4	2808 DUNLEER PL	\$1,125,000 3+3 *
CULVER CITY <i>Single Family</i>			
11-569889	672E5 Su 1-4	11806 MARSHALL ST	\$799,000 4+3.5 p.26 *
12-576799	672E4 Su 1-3	4124 BLEDSOE AVE	\$629,000 3+1.5 *
11-559841	672F2 Su 1-4	3823 MIDWAY AVE	\$549,000 3+1 *
12-572911	672E6 Su 1-4	12137 CULVER DR	\$480,000 2+1 *
CULVER CITY <i>Condo / Co-op</i>			
12-577899	672J6 Su 1-4	5950 BUCKINGHAM #106	\$295,000 2+2 *
12-576087	672J6 Su 1-4	5901 CANTERBURY DR #14	\$275,000 2+2 p.26 *
12-575035	672J6 Su 1-4	6150 BUCKINGHAM #104	\$230,000 1+1 *
11-559647	672J6 Su 1-4	5651 WINDSOR WAY #206	\$199,000 1+1.5 p.26 *
11-568841	672H7 Su 1-4	5870 GREEN VALLEY CIR #113	\$198,000 1+1 *
CULVER CITY <i>Income</i>			
12-577829	672H4 Su 1-4	10887 FLAXTON ST	\$595,000 *
DOWNTOWN L.A. <i>Condo / Co-op</i>			
12-573581	635D5 Su 1-4	900 W OLYMPIC BLVD #51F	\$9,300,000 3+3.5 *
12-573577	635D5 Su 1-4	900 W OLYMPIC BLVD #47G	\$4,472,000 3+3.5 *
12-573579	635D5 Su 1-4	900 W OLYMPIC BLVD #47E	\$2,821,000 3+3.5 *
12-573575	635D5 Su 1-4	900 W OLYMPIC BLVD #45D	\$2,220,000 3+3 *
12-573587	635D5 Su 1-4	900 W OLYMPIC BLVD #29G	\$2,100,000 2+2.5 *
12-573585	635D5 Su 1-4	900 W OLYMPIC BLVD #38H	\$1,786,000 2+2.5 *
12-573573	635D5 Su 1-4	900 W OLYMPIC BLVD #30A	\$1,558,000 2+2.5 *
12-573571	635D5 Su 1-4	900 W OLYMPIC BLVD #27C	\$1,432,200 2+2.5 *
12-573583	635D5 Su 1-4	900 W OLYMPIC BLVD #31I	\$1,266,000 1+2 *
12-573569	635D5 Su 1-4	900 W OLYMPIC BLVD #37G	\$990,000 1+1.75 *
12-573567	635D5 Su 1-4	900 W OLYMPIC BLVD #31F	\$852,000 1+1.5 *
11-563683	634F5 Su 1-4	215 W 7TH ST #1304	\$169,900 0+1 *
EAGLE ROCK <i>Single Family</i>			
11-532693	594J1 Su 1-3	1432 EL PASO DR	\$289,000 3+2 *
HANCOCK PARK-WILSHIRE <i>Single Family</i>			
12-578407	593H7 Su 1-4	556 N HARVARD	\$3,888,888 3+1 *
12-576715	633G2 Su 1-4	447 S PLYMOUTH BLVD	\$3,129,000 4+3.5 p.26 *
11-570427	633F1 Su 1-4	242 N LUCERNE	\$1,695,000 3+2 *
11-557599	633G1 Su 1-4	220 S VAN NESS AVE	\$1,695,000 4+3 *
11-563195	633F3 Su 1-4	928 S VICTORIA AVE	\$1,473,000 4+2.5 p.26 *
11-553751	633F1 Su 1-4	215 S LARCHMONT BLVD	\$1,299,500 5+3 *
11-547193	593E7 Su 1-4	309 N HIGHLAND AVE	\$1,299,000 4+3 *
12-574923	593E6 Su 1-4	712 N CHEROKEE AVE	\$1,099,000 3+2 *
12-573875	593E6 Su 1-4	722 N LAS PALMAS AVE	\$899,900 2+2 *
12-576925	593G7 Su 1-4	568 N BRONSON AVE	\$625,000 2+1.5 *
HANCOCK PARK-WILSHIRE <i>Condo / Co-op</i>			
12-576821	593E7 Su 1-4	651 WILCOX AVE #3G	\$499,000 2+2.5 *
HOLLYWOOD HILLS EAST <i>Single Family</i>			
11-554079	593F2 Su 1-4	6431 LA PUNTA DR	\$1,895,000 3+2.5 p.27 *
12-578215	593E3 Su 1-4	2010 HOLLY HILL TER	\$849,000 3+2 *
11-565475	593F2 Su 1-4	2460 VASANTA WAY	\$799,000 2+1 *
11-572153	593F3 Su 1-4	1965 CARMEN AVE	\$699,000 6+5 *
HOLLYWOOD HILLS EAST <i>Condo / Co-op</i>			
12-578277	593G2 Su 1-4	2604 N BEACHWOOD DR #4	\$319,500 1+1 *
HOLLYWOOD HILLS EAST <i>Income</i>			
12-578425	593F3 Su 1-4	2127 VINE ST	\$1,039,000 *
LOS ANGELES SOUTHWEST <i>Single Family</i>			
12-578329	703H1 Su 1-4	2016 W 78TH ST	\$319,000 3+2 *
12-574305	673J4 Su 1-4	1582 W 47TH ST	\$310,000 4+2 *
12-578677	673J6 Su 12-4	1453 W 62ND ST	\$239,900 2+1 *
LOS FELIZ <i>Single Family</i>			
12-575113	594C2 Su 2-5	3641 HOLBORO DR	\$2,099,000 0+0 *
11-563529	594C2 Su 1-4	3509 GRIFFITH PARK	\$1,419,000 3+3 *
12-574047	594A3 Su 12-3	1900 N NEW HAMPSHIRE AVE	\$899,000 3+2.5 *

OPEN HOUSES DIRECTORY

SAT/SUN

IFC - INSIDE FRONT COVER, IBC - INSIDE BACK COVER, BC - BACK COVER

OPEN HOUSES DIRECTORY

REFRESHMENTS * LUNCH
THEMLSPRO™ OPEN HOUSES

12-575157	594B3	Su 1-4	4231 NEWDALE DR	\$789,000	3+2	*
12-575725	594D1	Su 12-3	3959 EDENHURST AVE	\$599,000	3+2.75	*
11-569047	594D1	Su 1-4	4069 GARDEN AVE	\$560,000	3+2	*
LOS FELIZ			<i>Condo / Co-op</i>			
12-577955	594B2	Su 1-4	4411 LOS FELIZ BLVD #708	\$525,000	1+2	*
LOS FELIZ			<i>Lease</i>			
11-540145	594B3	Su 12-4	2143 COMMONWEALTH AVE	\$2,850	3+2	*
MALIBU			<i>Single Family</i>			
11-569371	629E4	Su 1-4	21766 AZURELEE DR	\$3,495,000	4+4	p.27
12-574105	626H7	Su 1-4	31537 VICTORIA POINT RD	\$2,675,000	5+4.5	*
MALIBU			<i>Lease</i>			
12-576579	629B6	Su 1-4	3949 RIDGEMONT DR	\$5,800	1+1.75	*
MALIBU BEACH			<i>Single Family</i>			
11-547017	629G6	Su 1-4	20906 PACIFIC COAST HWY	\$5,750,000	2+2	*
10-478217	625G6	Su 1-4	19222 PACIFIC COAST HWY	\$4,150,000	4+4.5	*
MALIBU BEACH			<i>Land</i>			
11-535785	628G7	Su 1-4	24900 PACIFIC COAST HWY	\$10,750,000	Land	*
MALIBU BEACH			<i>Lease</i>			
10-480611	628G7	Su 1-4	24680 MALIBU RD	\$14,900	5+4.5	*
10-478223	625G6	Su 1-4	19222 PACIFIC COAST HWY	\$12,500	4+4.5	*
MARINA DEL REY			<i>Single Family</i>			
11-562161	701J2	Su 1-3	5306 PACIFIC AVE	\$2,250,000	4+3.5	*
11-549339	701J1	Su 1-4	125 REEF MALL	\$2,199,000	4+6	p.27
11-529259	672C5	Su 1-4	4146 CHASE AVE	\$688,800	3+1.75	*
MID LOS ANGELES			<i>Single Family</i>			
12-572887	633F5	Su 1-4	1603 VIRGINIA RD	\$589,850	3+2.5	*
12-578115	633E7	Su 1-4	2946 SOMERSET DR	\$339,999	4+2	*
MID-WILSHIRE			<i>Single Family</i>			
11-553073	593J7	Su 1-4	600 N NORMANDIE AVE	\$595,000	4+3	*
MOUNT WASHINGTON			<i>Single Family</i>			
11-562627	594J2	Su 1-4	4615 NOB HILL DR	\$449,000	3+2	*
PACIFIC PALISADES			<i>Single Family</i>			
11-547137	631B5	Su 1-4	1015 CHAUTAUQUA BLVD	\$4,499,000	7+6.5	*
11-550725	630G1	Su 1-4	16814 CALLE DE SARAH	\$2,498,000	5+5.5	*
12-577577	631B5	Su 1-4	911 HARTZELL ST	\$2,395,000	4+4	p.27
11-558467	630H1	Su 1-4	16802 CALLE DE SARAH	\$2,189,000	5+4.5	p.14
12-578147	631A5	Su 1-4	1000 MONUMENT ST	\$1,649,000	3+2.5	p.27
12-578801	631A4	Su 1-4	1300 MONUMENT ST	\$1,560,000	3+2	p.27
11-542455	631B5	Su 1-4	760 HARTZELL ST	\$1,299,000	4+2	*
12-573371	630J5	Su 1-4	683 BIENVENEDA AVE	\$1,185,000	3+3	*
PACIFIC PALISADES			<i>Condo / Co-op</i>			
12-576141	631A5	Su 2-5	822 HAVERFORD AVE #B	\$1,199,000	3+3.5	*
11-562999	630F1	Su 1-4	17148 PALISADES CIR	\$520,000	2+1.75	*
PACIFIC PALISADES			<i>Lease</i>			
12-578141	631A5	Su 1-4	1000 MONUMENT ST	\$6,500	3+2.5	*
PALMS - MAR VISTA			<i>Single Family</i>			
12-578083	672C5	Su 1-4	4320 CHASE AVE	\$610,000	2+2	*
11-544643	672D2	Su 12-4	3551 S BENTLEY AVE	\$525,000	2+1	*
PALMS - MAR VISTA			<i>Condo / Co-op</i>			
12-577385	672D4	Su 11-2	4040 GRAND VIEW BLVD #11	\$349,000	2+2	*
12-573037	672E4	Su 1-4	11734 AVON WAY #108	\$349,000	2+2	*
PARK HILLS HEIGHTS			<i>Single Family</i>			
12-578831	673D1	Su 1-4	3522 POTOMAC AVE	\$305,000	3+1	*
PARK HILLS HEIGHTS			<i>Condo / Co-op</i>			
12-574751	673A7	Su 12-4	6616 SPRINGPARK AVE #6	\$385,000	3+2	*
12-574749	673A7	Su 12-4	6624 SPRINGPARK AVE #5	\$370,000	2+2	*
11-562695	673A7	Su 12-4	6616 SPRINGPARK AVE #8	\$365,000	3+2	p.27
12-576479	673A7	Su 12-4	6616 SPRINGPARK AVE #8	\$365,000	3+2	*
12-574745	673A7	Su 12-4	6624 SPRINGPARK AVE #4	\$335,000	2+2	*
11-559903	673A7	Su 12-4	6616-6624 SPRINGPARK AVE #4	\$315,000	2+1	p.IFC
12-574747	673A7	Su 12-4	6616 SPRINGPARK AVE #4	\$299,000	2+1	*

PLAYA DEL REY			<i>Single Family</i>			
11-557773	702B3	Su 1-4	8228 CALABAR AVE	\$1,299,000	5+4.5	*
PLAYA DEL REY			<i>Condo / Co-op</i>			
12-577379	702C3	Su 1-4	8125 REDLANDS ST #107	\$449,000	3+2.5	*
12-577539	702C3	Su 1-4	8675 FALMOUTH AVE #304	\$325,000	1+1	*
11-522317	702C3	Su 12-2	7742 REDLANDS ST #H1026	\$279,000	2+2	*
PLAYA VISTA			<i>Condo / Co-op</i>			
11-566681	702D1	Su 1-4	13031 VILLOSA PL #121	\$699,000	3+3	*
SANTA MONICA			<i>Single Family</i>			
11-559491	631B6	Su 1-4	14610 HILLTREE RD	\$4,525,000	5+3.5	*
11-559369	631D7	Su 1-4	619 EUCLID ST	\$2,999,999	5+4.5	*
12-576575	631D6	Su 1-4	1424 MARGUERITA AVE	\$2,999,000	5+4.5	*
12-577637	631E5	Su 1-4	363 21ST PL	\$2,550,000	4+3.75	*
12-577101	631D7	Su 1-4	633 EUCLID ST	\$2,348,000	3+2	*
12-577087	631D6	Su 1-4	239 EUCLID ST	\$1,795,000	3+1.75	*
12-578969	631D6	Su 1-3	428 14TH ST	\$1,649,500	3+1	*
12-574457	671J1	Su 1-4	2260 27TH ST	\$1,549,000	4+3	p.IFC
12-573839	671J1	Su 12-3	2626 30TH ST	\$1,449,000	4+2.5	*
11-569913	671F4	Su 11-2	2618 2ND ST- FRONT HOUSE PLUS 2 UNITS	\$1,389,000	7+6	*
12-574953	671H2	Su 12-2	2437 18TH ST	\$1,329,000	7+4	*
12-577943	631G6	Su 12-2	2919 WASHINGTON AVE	\$1,325,000	3+2	*
11-561657	671H4	Su 1:30-4	1014 WILSON PL	\$1,099,000	5+3	*
11-561855	671J1	Su 1-4	2907 URBAN AVE	\$899,000	4+4	*
SANTA MONICA			<i>Condo / Co-op</i>			
11-511227	631E7	Su 1-4	917 19TH ST #103	\$1,549,000	3+2.5	*
11-544361	631E7	Su 1-4	917 19TH ST #105	\$1,549,000	3+2.5	*
11-499405	631E7	Su 1-4	917 19TH ST #106	\$1,495,000	3+2.5	*
11-542751	631E7	Su 1-4	917 19TH ST #104	\$1,495,000	3+2.5	*
11-547263	631F6	Su 1-5	853 21ST ST #102	\$1,325,000	2+2.5	*
11-564747	631F6	Su 1-5	853 21ST ST #106	\$1,299,000	1+1.5	*
11-564743	631F6	Su 1-5	853 21ST ST #101	\$1,295,000	2+2.5	*
12-572967	631F7	Su 12-3	1021 19TH ST #6	\$799,000	2+2	*
11-565679	631E7	Su 12-3	858 12TH ST #4	\$685,000	2+2	*
11-536629	671E1	Su 1-4	1021 12TH ST #101	\$659,000	3+2	*
11-567947	671H3	Su 1-4	2525 14TH ST #4	\$499,000	2+1.5	*
SILVER LAKE - ECHO PARK			<i>Single Family</i>			
11-563175	594D4	Su 1-4	2483 LINDSAY LN	\$1,299,000	4+2.5	*
11-552227	634F1	Su 1-4	740 E KENSINGTON RD	\$749,000	2+1.5	*
SUNSET STRIP - HOLLYWOOD HILLS WEST			<i>Single Family</i>			
12-577055	592H5	Su 12-4	9243 WARBLER WAY	\$2,995,000	4+4.5	*
11-565921	592J4	Su 1-4	8577 FRANKLIN AVE	\$2,699,000	3+3	*
11-552873	593A4	Su 1-4	8179 LAUREL VIEW DR	\$2,499,000	4+3.5	*
11-542209	593A4	Su 1-4	8146 LAUREL VIEW DR	\$2,250,000	4+4.5	*
11-566131	593D4	Su 1-4	1841 OUTPOST DR	\$2,149,000	5+3.5	*
12-575033	593C4	Su 1-4	1716 N GARDNER ST	\$1,875,000	4+4.5	*
11-563307	592J4	Su 1-4	1604 SUNSET PLAZA DR	\$1,495,000	4+4.5	*
12-578485	593B4	Su 1-4	1552 N OGDEN DR	\$1,425,000	3+3.5	*
12-574867	592J5	Su 1-4	8697 HOLLYWOOD BLVD	\$1,399,900	3+3	*
12-573981	593C1	Su 1-4	7141 WOODROW WILSON DR	\$1,395,000	3+3.5	p.27
12-577007	593D1	Su 11-2	7101 WOODROW WILSON DR	\$1,250,000	3+3.5	*
		Su 1-4	8121 GOULD AVENUE	\$1,249,000	3+3	*
	A3	Su 1-4	8121 GOULD AVENUE	\$1,249,000	3+3	*
11-568181	593A4	Su 1-4	8045 SELMA AVE	\$1,195,000	3+2.5	p.IFC
12-578341	563D7	Su 11-2	3167 LAKE HOLLYWOOD DR	\$749,000	2+2	*
SUNSET STRIP - HOLLYWOOD HILLS WEST			<i>Lease</i>			
11-558513	593A4	Su 1-4	8146 LAUREL VIEW DR	\$15,000	4+4.5	*
VENICE			<i>Single Family</i>			
12-572685	671J5	Su 1-4	858 NOWITA PL	\$1,895,000	3+3	*
11-561899	671J5	Su 1-3	916 CALIFORNIA AVE	\$1,065,000	4+3	*
12-578197	671J4	Su 1-4	1147 LAKE ST	\$957,500	4+3	*
12-574339	672A5	Su 12-2	2551 WALNUT AVE	\$684,900	4+2	*
WEST HOLLYWOOD VICINITY			<i>Single Family</i>			
11-568545	592H6	Su 1-4	870 N DOHENY DR	\$1,575,000	2+2	*
11-552847	592H7	Su 1-4	9001 ASHCROFT AVE	\$799,000	2+1	*

OPEN HOUSES DIRECTORY

SUNDAY

REFRESHMENTS X LUNCH **THEMLS PRO™ OPEN HOUSES** **OPEN HOUSES DIRECTORY** **IFC - INSIDE FRONT COVER, IBC - INSIDE BACK COVER, BC - BACK COVER**

WEST HOLLYWOOD VICINITY *Condo / Co-op*

11-569239	593A6	Su 1-4	851 N KINGS RD #301	\$869,500	3+4.5	*
12-578923	593A6	Su 1-4	825 N KINGS RD #9	\$795,000	2+2	*
12-578847	593A6	Su 12-4	850 N CROFT AVE #105	\$749,000	2+2	*
12-578749	592H5	Su 1-3	1230 HORN AVE #528	\$499,000	2+2	*
12-578919	593A6	Su 1-4	949 N KINGS RD #307	\$459,000	2+2	*
11-569433	592J6	Su 1-4	8530 HOLLOWAY DR #316	\$329,000	1+1	*
11-566491	593B5	Su 1-4	1400 N HAYWORTH AVE #16	\$299,900	1+1	*

WEST HOLLYWOOD VICINITY *Income*

11-571441	592H7	Su 1-4	9033 RANGELY AVE	\$749,000		*
11-571439	592H7	Su 1-4	9037 RANGELY AVE	\$699,000		*

WEST L.A. *Single Family*

12-573889	632A7	Su 1-4	2447 STONER AVE	\$575,000	3+1	p,27
12-575599	631J6	Su 12-3	1741 S BUNDY DR	\$549,000	2+1	*

WEST L.A. *Condo / Co-op*

12-578221	631H6	Su 1-4	1530 S CENTINELA AVE #101	\$569,000	2+2	*
12-574755	632C7	Su 12-4	2884 SAWTELLE #119	\$350,000	2+2	*

WESTCHESTER *Single Family*

12-578301	702F1	Su 1:30-4	7508 WESTLAWN AVE	\$1,359,000	7+7	*
12-575283	702G1	Su 1-4	7516 ALVERSTONE AVE	\$1,095,000	4+2.5	*
11-566109	702E2	Su 1-4	7947 MCCONNELL AVE	\$819,500	3+2	p,IFC
12-577957	702F1	Su 1:30-4	7806 DUNBARTON AVE	\$799,000	4+2	*
12-576221	702G2	Su 12-3	6400 W 83RD ST	\$549,000	3+1	*

WESTCHESTER *Condo / Co-op*

12-575191	702G1	Su 11-2	7401 S SEPULVEDA BLVD #110	\$659,000	2+3.5	*
11-569941	702G1	Su 1-4	7401 S SEPULVEDA #106	\$659,000	2+3.5	*
12-575121	702G1	Su 1-4	7401 S SEPULVEDA BLVD #104	\$659,000	2+3.5	*
10-454665	702H1	Su 1-4	7401 S SEPULVEDA BLVD #116	\$635,000	2+3.5	*
11-542745	702G1	Su 1-4	7401 S SEPULVEDA BLVD #115	\$619,000	2+3.5	*

WESTWOOD - CENTURY CITY *Single Family*

12-577253	632C2	Su 1-4	10545 LINDBROOK DR	\$1,899,500	5+3	*
12-575897	632D3	Su 1-4	1631 WARNALL AVE	\$1,399,000	3+1.75	*
11-547071	632C2	Su 12-3	871 WARNER AVE	\$1,389,000	3+2	*
		Su 1-4	10551 KINNARD	\$1,369,000	4+3	*
12-578223	632D3	Su 1-4	1741 ENSLEY AVE	\$1,199,000	3+2	*

WESTWOOD - CENTURY CITY *Condo / Co-op*

11-552955	632C4	Su 1-4	1817 PROSSER AVE #404	\$799,000	2+3	*
12-574469	632B5	Su 1-4	1870 VETERAN AVE #314	\$788,000	3+3.5	p,27
12-573905	632B5	Su 1-4	1862 S BENTLEY AVE #201	\$769,000	3+3	*
11-565871	6323D	Su 12-4	10345 WILKINS AVE #102	\$759,000	2+2.5	*
12-576491	632E4	Su 1-5	2337 FOX HILLS DR #102	\$749,000	2+3	*
11-558041	632C4	Su 1-4	1817 PROSSER AVE #103	\$685,000	2+2	*
11-565599	632C4	Su 1-4	1817 PROSSER AVE #401	\$685,000	2+2	*
11-552951	632C4	Su 1-4	1817 PROSSER AVE #301	\$675,000	3+2	*
11-568709	632C4	Su 1-4	1817 PROSSER AVE #201	\$665,000	3+2	*
11-552961	632C4	Su 1-4	1817 PROSSER AVE #403	\$660,000	2+2	*
12-576961	632B3	Su 1-5	10933 WELLWORTH AVE #11	\$619,000	2+3	*
11-565591	632C4	Su 1-4	1817 PROSSER AVE #204	\$595,000	2+2	*
11-548499	632D2	Su 1-4	1333 S BEVERLY GLEN #803	\$549,000	2+2	p,27
12-578943	632A4	Su 1-4	1535 S BENTLEY AVE #104	\$539,000	2+2	*
11-557083	632C4	Su 1-4	1817 PROSSER AVE #305	\$525,000	2+2	*

SUNDAY SAN FERNANDO VALLEY

CANOGA PARK *Condo / Co-op*

11-568707	530A4	Su 1-4	7317 VASSAR AVE	\$299,000	3+3	*
-----------	-------	--------	-----------------	-----------	-----	---

EAST VAN NUYS *Single Family*

12-578681	532A4	Su 1-5	14223 RUNNYMEDE ST	\$339,900	4+2	*
-----------	-------	--------	--------------------	-----------	-----	---

ENCINO *Single Family*

11-559273	561C2	Su 2-5	5450 LOUISE AVE	\$1,595,000	9+5	*
11-549791	561E6	Su 2-5	3810 DIAMANTE PL	\$1,000,000	5+4.5	p,27

ENCINO *Lease*

11-566065	561C2	Su 2-5	5450 LOUISE AVE	\$8,900	9+5	*
-----------	-------	--------	-----------------	---------	-----	---

LAKE BALBOA *Single Family*

12-578061	531C4	Su 1-4	7238 WISH AVE	\$419,900	4+2	*
-----------	-------	--------	---------------	-----------	-----	---

NORTH HOLLYWOOD *Condo / Co-op*

12-576787	562J3	Su 1-4	5016 BAKMAN AVE #104	\$364,000	2+2.5	*
-----------	-------	--------	----------------------	-----------	-------	---

NORTHRIDGE *Single Family*

12-573453	501B5	Su 1-4	17332 SUPERIOR ST	\$639,000	5+3	*
-----------	-------	--------	-------------------	-----------	-----	---

SHERMAN OAKS *Single Family*

12-573335	561H7	Su 1-4	3450 VISTA HAVEN RD	\$1,399,000	3+3	*
-----------	-------	--------	---------------------	-------------	-----	---

12-577053	561J3	Su 1-4	14940 OTSEGO ST	\$799,000	4+3	p,IBC
11-543391	561J3	Su 1-4	14653 HESBY ST	\$770,000	3+3	*

11-565435	562A2	Su 1-4	5495 KATHERINE AVE	\$599,900	4+3	*
11-567921	562A2	Su 12-2	14346 KILLION ST	\$595,000	3+2	*

12-573109	562A2	Su 1-4	5232 SYLMAR AVE	\$499,000	2+1	*
-----------	-------	--------	-----------------	-----------	-----	---

SHERMAN OAKS *Lease*

12-573699	561J3	Su 1-4	14653 HESBY ST	\$4,200	3+3	*
-----------	-------	--------	----------------	---------	-----	---

STUDIO CITY *Single Family*

11-552869	562F6	Su 1-4	3624 AVENIDA DEL SOL	\$1,179,000	4+3	*
-----------	-------	--------	----------------------	-------------	-----	---

11-547121	563A6	Su 1-4	3641 WRIGHTWOOD DR	\$973,000	3+2	*
12-576599	562J6	Su 1-5	11206 LAURIE DR	\$909,000	2+2	*

TARZANA *Single Family*

11-570529	560G2	Su 1-4	5405 AURA AVE	\$1,095,000	4+3	p,IFC
-----------	-------	--------	---------------	-------------	-----	-------

VALLEY VILLAGE *Condo / Co-op*

12-576699	562G4	Su 1-4	11949 KLING ST #32	\$389,000	2+2.5	*
-----------	-------	--------	--------------------	-----------	-------	---

WEST HILLS *Single Family*

12-575309	529J6	Su 11-4	6546 SHOUP AVE	\$619,000	4+3.5	p,27
-----------	-------	---------	----------------	-----------	-------	------

WINNETKA *Lease*

12-578873	530D3	Su 2-4	7959 SUNNYBRAE AVE	\$1,995	3+2	*
-----------	-------	--------	--------------------	---------	-----	---

SUNDAY OTHER AREAS

GLENDALE *Single Family*

F11164964CN		Su 1-4	1237 NORTH MARYLAND AVENUE	\$939,750	3+3	p,IFC
-------------	--	--------	----------------------------	-----------	-----	-------

12-578901	534H7	Su 1-4	1642 CAPISTRANO AVE	\$850,000	4+3	*
-----------	-------	--------	---------------------	-----------	-----	---

LA PUENTE *Single Family*

12-573673	638C5	Su 12-4:30	527 MELHAM AVE	\$270,000	4+2	*
-----------	-------	------------	----------------	-----------	-----	---

MONROVIA *Single Family*

		Su 1-4	128 HIGHLAND PL	\$1,229,500	4+3	p,IFC
--	--	--------	-----------------	-------------	-----	-------

PASADENA *Single Family*

11-569669	566D3	Su 1-4	1866 LAS LUNAS ST	\$795,000	3+3	*
-----------	-------	--------	-------------------	-----------	-----	---

11-564979	566C2	Su 1-4	864 VICTORIA DR	\$674,000	3+2	*
-----------	-------	--------	-----------------	-----------	-----	---

REDONDO BEACH *Condo / Co-op*

12-573213	733A6	Su 1-3	2006 PLANT AVE #B	\$825,000	4+2.5	*
-----------	-------	--------	-------------------	-----------	-------	---

SHADOW HILLS *Single Family*

12-578927	503A4	Su 1-4	10930 WICKS ST	\$560,000	2+3	*
-----------	-------	--------	----------------	-----------	-----	---

OUT OF AREA *Single Family*

12-578767	738C3	Su 1-4	2160 WINTERWOOD DR	\$745,000	4+3	*
-----------	-------	--------	--------------------	-----------	-----	---

12-577143	4640D2	Su 1-4	25123 SUMMERHILL LN	\$679,000	5+3	*
11-572515	595C2	Su 1-5	5660 HUB ST	\$479,500	3+2	p,5

12-578609	595C1	Su 1-4	1002 MILWAUKEE AVE	\$449,000	3+1	*
-----------	-------	--------	--------------------	-----------	-----	---

OUT OF AREA *Condo / Co-op*

11-561677	595E4	Su 1-3	4589 VIA MARISOL #161	\$229,000	2+1	*
-----------	-------	--------	-----------------------	-----------	-----	---

OPEN HOUSES DIRECTORY

SUNDAY

IFC - INSIDE FRONT COVER, IBC - INSIDE BACK COVER, BC - BACK COVER

NEW LISTINGS DIRECTORY

* THEMLS^{PRO}™ NEW LISTINGS

NEW LISTINGS WESTSIDE / LOS ANGELES

NEW LISTINGS		WESTSIDE / LOS ANGELES	
BEL AIR - HOLMBY HILLS			
<i>Single Family</i>			
12-577797	591H6	1116 LINDA FLORA DR	\$4,995,000 5+4.5 310-777-6200 *
12-578773	591J5	10625 LEVICO WAY	\$2,595,000 3+2 310-275-1000 *
12-578133	631H1	100 N THURSTON AVE	\$2,195,000 4+4.5 310-777-7800 *
12-578897	591J6	1000 SOMERA RD	\$1,849,000 5+5 310-777-6200 *
12-577839	592A4	1628 N BEVERLY GLEN BLVD	\$549,000 2+2 310-474-1013 *
12-578775	592A4	1939 N BEVERLY GLEN	\$529,000 2+2 310-820-6651 *
BEL AIR - HOLMBY HILLS			
<i>Land</i>			
12-578585	592A6	1037 STRADELLA RD	\$1,200,000 Land 310-724-7000 *
BEVERLY CENTER-MIRACLE MILE			
<i>Single Family</i>			
12-578643	593A7	328 N FLORES ST	\$2,399,000 4+5.5 310-855-0100 *
12-578689	593C7	340 N FULLER AVE	\$1,499,000 4+3 888-442-7248 *
12-577859	632J1	469 S HAMEL RD	\$1,395,000 3+2.5 310-432-6400 *
12-577793	633B2	6258 WARNER DR	\$1,249,500 4+3 310-478-1835 *
12-577993	633D3	854 S CLOVERDALE AVE	\$1,099,000 5+3 323-464-9272 *
12-578505	633C4	1174 CARMONA AVE	\$989,000 4+4 310-724-7100 *
12-578207	633C4	1249 CARMONA AVE	\$929,000 2+2 310-273-3113 *
12-577627	593A7	347 N CRESCENT HEIGHTS	\$875,000 4+4 310-432-6400 *
12-578915	593A7	455 N CRESCENT HEIGHTS BLVD	\$828,000 3+2 310-663-0981 *
BEVERLY CENTER-MIRACLE MILE			
<i>Condo / Co-op</i>			
12-577739	633A1	8420 BLACKBURN AVE #401	\$1,095,000 4+4.5 310-273-3113 *
12-577967	633C2	648 S RIDGELEY DR #202	\$99,000 1+1 310-887-6400 *
BEVERLY CENTER-MIRACLE MILE			
<i>Income</i>			
12-578817	593C7	424 N GARDNER ST	\$1,726,000 323-658-6500 *
12-578821	633B3	5906 SAN VICENTE	\$1,395,000 323-658-6500 *
12-577751	633B2	458 N OGDEN DR	\$1,279,000 323-655-1282 *
12-578963	632J3	8561 W OLYMPIC BLVD	\$1,049,000 323-640-7000 *
12-578889	633C4	1338 S DUNSMUIR AVE	\$975,000 310-456-6431 *
12-578415	633B4	1422 CARMONA AVE	\$699,000 310-623-1300 *
12-578553	633B4	1425 S SIERRA BONITA AVE	\$565,000 310-826-2646 *
BEVERLY CENTER-MIRACLE MILE			
<i>Lease</i>			
12-578559	632H1	122 CLARK DR #405	\$4,800 2+2.5 310-230-3700 *
12-577629	632H1	153 S LA PEER DR	\$4,500 3+1.75 310-278-9470 *
12-578013	633D3	854 S CLOVERDALE AVE	\$4,200 5+3 323-464-9272 *
12-578649	593D7	413 ALTA VISTA BLVD #415	\$1,950 1+1 310-278-9470 *
12-578549	633B2	6151 ORANGE ST #221	\$1,400 1+1 310-264-2225 *
BEVERLY HILLS			
<i>Single Family</i>			
12-578931	592E6	1004 N REXFORD DR	\$6,650,000 5+6 310-432-6400 *
12-578017	592G4	1620 CARLA RDG	\$4,488,000 3+4 310-777-6200 *
12-577985	592E5	1260 SHADOW HILL WAY	\$3,900,000 3+3.5 310-777-6200 *
12-578961	632F3	345 S ROXBURY DR	\$2,450,000 6+4.5 310-652-6285 *
12-578513	632H2	272 S CLARK DR	\$1,595,000 3+2 310-482-2500 *
12-577867	632G2	272 S CANON DR	\$1,299,000 3+2 310-278-3311 *
BEVERLY HILLS			
<i>Condo / Co-op</i>			
12-578579	632F2	137 S SPALDING DR #304	\$1,249,000 2+3 310-273-3113 *
12-578575	632F2	211 S SPALDING DR #N104	\$899,000 2+3 310-456-3638 *
12-578449	632H2	116 N SWALL DR #501	\$719,000 2+2.5 310-271-2229 *
12-578715	632H1	321 N OAKHURST DR #204	\$635,000 2+2 310-300-3333 *
BEVERLY HILLS			
<i>Income</i>			
12-578009	633A2	219 S HAMILTON DR	\$1,375,000 310-724-7000 *
BEVERLY HILLS			
<i>Lease</i>			
12-578375	592E6	1010 N REXFORD DR	\$48,500 5+6.5 310-306-0926 *
12-578537	592F3	2300 KIMRIDGE RD	\$45,000 6+9 424-230-3700 *
12-578245	592G6	1120 LA COLLINA DR	\$25,800 8+9.5 310-273-3113 *
12-578135	632G1	330 N CRESCENT DR #101	\$4,495 4+2 310-470-1112 *
12-578271	632H2	114 LA PEER DR #203	\$4,000 3+3 310-275-5156 *
12-578791	632G1	318 MAPLE DR #308	\$3,950 2+3 310-300-3333 *
BEVERLY HILLS POST OFFICE			
<i>Single Family</i>			
12-578945	592D5	1470 BLUERIDGE DR	\$4,595,000 2+3 310-432-6400 *
12-578419	592F5	9322 READCREST DR	\$1,849,000 2+2 310-724-7000 *
12-578641	592D4	1657 SAN YSIDRO DR	\$1,199,000 3+2 310-500-3900 *
12-577843	592C3	9806 PORTOLA	\$895,000 2+2 310-724-7000 *
12-577921	592C3	9811 EASTON DR	\$775,000 3+2 *
12-577953	592C2	2427 BENEDICT CANYON DR	\$599,000 3+2 310-887-6400 *
BEVERLY HILLS POST OFFICE			
<i>Lease</i>			
12-578519	592C3	9811 EASTON DR	\$3,595 3+2 *
BEVERLYWOOD VICINITY			
<i>Single Family</i>			
12-578861	632G4	1607 REEVES ST	\$2,590,000 7+6.5 424-202-3200 *
12-577963	632G4	9726 HOLCOMB ST	\$1,499,000 3+4 310-777-6200 *
12-577803	632H5	1909 S CREST DR	\$939,000 3+2.5 424-202-3200 *
12-578131	632G4	1532 BEVERWIL DR	\$849,900 3+3 323-464-9272 *
12-578441	633A5	1843 STEARNS DR	\$585,000 2+1 323-671-1200 *
BEVERLYWOOD VICINITY			
<i>Condo / Co-op</i>			
12-577731	632F4	1318 ROXBURY DR #116	\$1,050,000 2+2.5 310-724-7000 *

12-578695	632F3	1167 ROXBURY DR #308	\$615,000 2+2.5 310-273-3113 *
BEVERLYWOOD VICINITY			
<i>Income</i>			
12-578815	632H4	1501 S CANFIELD AVE	\$899,000 310-836-8321 *
BEVERLYWOOD VICINITY			
<i>Lease</i>			
12-577861	632F4	1318 ROXBURY DR #116	\$7,500 2+2.5 310-724-7000 *
12-578637	633A5	1800 S HAYWORTH AVE	\$3,900 3+3 310-777-6200 *
12-578093	632H6	2814 REYNIER AVE	\$3,000 3+1.5 310-724-7100 *
BRENTWOOD			
<i>Single Family</i>			
12-577917	631F3	12742 HIGHWOOD ST	\$7,495,000 5+4.5 310-820-0195 *
12-578155	631E4	237 S BURLINGAME AVE	\$6,395,000 5+7.5 310-454-0080 *
12-577633	631H5	956 S GREYNA GREEN WAY	\$2,695,000 4+5.5 888-987-6246 *
12-577865	631F4	341 S ANITA AVE	\$2,095,000 3+3 310-207-7080 *
12-577959	631G3	201 N BOWLING GREEN WAY	\$1,925,000 3+2.5 310-207-7080 *
12-577905	631E1	2065 MANDEVILLE CANYON RD	\$1,865,000 4+4 424-202-3200 *
12-578879	591E4	2202 CANYONBACK RD	\$1,550,000 2+3 310-820-6651 *
12-578727	591D2	3827 MANDEVILLE CANYON RD	\$1,295,000 3+2.75 424-203-1800 *
BRENTWOOD			
<i>Condo / Co-op</i>			
12-577907	631H4	1000 GRANVILLE AVE #101	\$999,000 2+1.75 310-458-0091 *
12-577815	631H5	11932 GOSHEN AVE #101	\$739,000 3+2 310-858-6800 *
12-577667	631H5	1000 S WESTGATE AVE #317	\$460,000 2+2 818-528-3200 *
BRENTWOOD			
<i>Lease</i>			
12-577721	631G1	746 NORWAY LN	\$16,000 5+5.5 310-858-6800 *
12-577869	631F2	357 CROWN DR	\$12,000 4+4 310-500-3900 *
12-577969	631G3	201 BOWLING GREEN WAY	\$7,500 3+2.5 310-207-7080 *
12-578507	631G5	848 S GREYNA GREEN WAY	\$7,500 4+3.5 310-482-2200 *
12-577673	631E1	738 KENTER AVE	\$7,000 4+5 310-478-1835 *
12-578601	631G5	12315 GORHAM AVE	\$4,500 2+2 310-724-7000 *
12-578075	631G3	163 N BOWLING GREEN WAY	\$4,400 3+1.5 424-203-1800 *
CHEVIOT HILLS - RANCHO PARK			
<i>Single Family</i>			
12-577881	632D6	2728 GLENDON AVE	\$1,095,000 4+3 310-481-6262 *
CHEVIOT HILLS - RANCHO PARK			
<i>Condo / Co-op</i>			
12-578607	632D5	10537 AYRES AVE	\$995,000 4+3 310-454-1111 *
CHEVIOT HILLS - RANCHO PARK			
<i>Lease</i>			
12-577773	632D5	10549 CUSHDON AVE	\$4,795 3+2 310-271-2229 *
CULVER CITY			
<i>Single Family</i>			
12-577641	672F2	10767 OREGON AVE	\$875,000 4+3 877-532-4521 *
12-577595	672G4	10840 PICKFORD WAY	\$725,000 2+2 310-820-6651 *
CULVER CITY			
<i>Condo / Co-op</i>			
12-578709	672H3	5104 VELVET LN	\$495,000 3+3 310-837-7161 *
12-578355	672H7	5845 DOVERWOOD DR #306	\$349,999 2+2 310-444-1485 *
12-577899	672J6	5950 BUCKINGHAM #106	\$295,000 2+2 310-482-2200 *
CULVER CITY			
<i>Income</i>			
12-578203	672G4	5354 KINSTON AVE	\$950,000 310-802-2500 *
12-577829	672H4	10887 FLAXTON ST	\$595,000 310-858-6800 *
CULVER CITY			
<i>Lease</i>			
12-577649	672E2	3863 HURON AVE	\$3,500 3+3 310-390-9041 *
12-578267	672E2	3865 HURON AVE	\$2,800 2+2 310-390-9041 *
DOWNTOWN L.A.			
<i>Single Family</i>			
12-578403	634C2	257 S PARK VIEW ST	\$349,000 2+1 213-386-8888 *
12-578179	674C5	331 W 58TH ST	\$190,000 3+2 310-379-8800 *
12-577997	674G3	4305 HONDURAS ST	\$59,000 2+2 310-887-6400 *
DOWNTOWN L.A.			
<i>Condo / Co-op</i>			
12-578623	634F3	880 W 1ST ST #619	\$428,000 2+2 213-629-2530 *
12-577777	634E5	849 S BROADWAY #309	\$310,000 1+1 626-204-3300 *
12-577761	634F4	108 W 2ND ST #514	\$239,000 0+1 323-762-2600 *
12-578219	634F5	746 S LOS ANGELES ST #307	\$179,900 0+1 323-299-4876 *
DOWNTOWN L.A.			
<i>Income</i>			
12-578863	634B4	1110 S LAKE ST	\$1,899,000 323-938-5700 *
12-577699	674D5	323 E 53RD ST	\$239,000 310-271-2229 *
12-578199	674G3	1748 E 43RD ST	\$219,900 310-379-8800 *
12-578311	674C5	104 E 56TH ST	\$190,000 310-500-3900 *
DOWNTOWN L.A.			
<i>Lease</i>			
12-578387	000	900 W OLYMPIC BLVD #42C	\$8,750 3+4 310-247-7770 *
12-578323	634E5	645 9TH ST #312	\$2,900 2+2 888-505-6387 *
12-578825	634G5	629 TRACTION AVE #613	\$2,850 2+2 213-386-8888 *
12-578543	634D5	1155 S GRAND AVE #401	\$2,800 1+2 888-505-6387 *
12-578667	634H6	1850 INDUSTRIAL ST #312	\$2,800 2+1 888-505-6387 *
12-578357	634F4	257 S SPRING ST #4G	\$2,695 2+2 626-204-3300 *
12-578259	634D5	1111 S GRAND AVE #707	\$2,295 1+1 310-788-0700 *
12-577981	634D5	1111 GRAND AVE #617	\$2,250 1+1 213-995-5055 *
12-578517	634E5	330 W 11TH ST #509	\$2,200 2+2 888-505-6387 *
12-577645	634D5	1100 HOPE ST #1113	\$2,100 1+1 213-995-5055 *
EAGLE ROCK			
<i>Single Family</i>			
12-578745	565A5	2168 ESTES RD	\$1,100,000 4+3.5 323-350-8297 *
12-577853	595D1	6158 ROY ST	\$379,000 2+2 323-665-1700 *

NEW LISTINGS DIRECTORY

* THEMLS ^{PRO} ™ NEW LISTINGS										NEW LISTINGS DIRECTORY										IFC - INSIDE FRONT COVER, IBC - INSIDE BACK COVER, BC - BACK COVER	
HANCOCK PARK-WILSHIRE										Single Family											
12-577961	633F2	615 S ROSSMORE AVE	\$5,295,000	6+6.5	323-464-9272	*	12-577783	673F3	4229 DEGNAN	\$825,000		323-750-4445	*								
12-578589	633E1	188 S JUNE ST	\$4,950,000	7+9	323-462-0867	*	12-577787	673D2	4033 PALMWOOD DR	\$825,000		323-750-4445	*								
12-578407	593H7	556 N HARVARD	\$3,888,888	3+1	310-642-7653	*	12-578797	674C5	204 W 52ND PL	\$399,500		323-658-6500	*								
12-578805	633F2	616 S ARDEN BLVD	\$1,995,000	5+4	213-393-9844	*	12-578489	704B3	527 W 88TH ST	\$290,000		562-381-2939	*								
12-578563	633E1	127 S CITRUS AVE	\$1,795,000	3+3.5	323-464-9272	*	12-578257	704C3	242 W 89TH ST	\$234,900		310-204-8971	*								
12-578103	633E1	212 S HIGHLAND AVE	\$1,439,000	4+3	310-652-6285	*	12-577689	673J2	1389 W 39TH ST	\$225,000		310-330-4688	*								
12-578639	593F7	580 N ARDEN	\$1,150,000	3+2	818-432-1500	*	12-578785	674A5	1149 W 55TH ST	\$219,000		818-790-6774	*								
12-577873	633H4	3261 COUNTRY CLUB DR	\$695,000	3+2.5	310-777-7800	*	12-578809	704A4	1130 W 98TH ST	\$149,900		310-777-6200	*								
12-578811	633F3	1032 S WINDSOR	\$650,000	3+2	213-908-0810	*	12-577991	674B7	6927 S FIGUEROA ST	\$50,000		310-887-6400	*								
HANCOCK PARK-WILSHIRE										Condo / Co-op											
12-578687	593H7	5057 MAPLEWOOD AVE #204	\$619,000	3+3	213-249-9047	*	12-577805	593J3	4915 LOS FELIZ BLVD	\$5,399,000	5+4.5	323-300-1000	*								
12-577609	593H7	4822 ELMWOOD AVE #304	\$499,900	3+2	213-417-2020	*	12-578691	593H3	2249 MOUNTAIN OAK DR	\$3,795,000	3+3	310-278-3311	*								
12-578529	633G3	837 S CRENSHAW BLVD #102	\$489,000	3+2	213-386-8888	*	12-578571	593J2	2651 NOTTINGHAM PL	\$3,650,000	2+3	310-432-6400	*								
12-577607	593H7	4822 ELMWOOD AVE #201	\$445,900	3+2	213-417-2020	*	12-577617	594B2	3977 FARMOUTH DR	\$1,799,000	3+3	818-783-7721	*								
12-578287	633F3	860 S LUCERNE #101	\$369,900	2+2	310-820-6651	*	12-577613	594C2	3143 WAVERLY DR	\$699,000	3+2	323-665-1121	*								
12-578295	593D7	525 N SYCAMORE AVE #422	\$227,500	1+1	310-652-6600	*	12-578895	594C4	3839 FRANKLIN AVE	\$695,000	3+2	323-906-8383	*								
HANCOCK PARK-WILSHIRE										Income											
12-577801	593D7	406 N ORANGE DR	\$1,295,000		310-278-9470	*	12-578417	594D2	3531 HOLLYDALE DR	\$499,000	2+1	323-462-6262	*								
12-578917	593H7	636 N ST ANDREWS PL	\$975,000		323-951-9778	*	LOS FELIZ										Condo / Co-op				
12-578345	633E4	1246 S HUDSON AVE	\$529,000		323-938-5700	*	12-577955	594B2	4411 LOS FELIZ BLVD #708	\$525,000	1+2	323-671-1200	*								
12-578113	593E6	843 WILCOX AVE	\$500,000		310-724-7100	*	12-577835	594B2	4455 LOS FELIZ BLVD #204	\$289,000	1+1	213-749-7145	*								
HANCOCK PARK-WILSHIRE										Lease											
12-578153	593G7	436 PLYMOUTH	\$5,700	2+1.75	213-281-9784	*	MALIBU										Single Family				
HOLLYWOOD										Single Family											
12-578433	593G4	1524 LA BAIG AVE	\$303,000	3+1	213-833-3315	*	12-578573	667F1	28811 TEAL TER	\$4,000,000	4+5	310-457-6550	*								
HOLLYWOOD										Condo / Co-op											
12-578331	2020	6735 YUCCA ST #502	\$775,000	2+3.5	858-755-0216	*	12-578085	667H1	27225 WINDING WAY	\$3,150,000	5+5	310-457-6550	*								
12-577597	593E4	6735 YUCCA ST #107	\$593,500	2+2.5	310-461-0400	*	12-577975	627J6	27400 CALICUT RD	\$2,750,000	3+3.5	310-456-3638	*								
12-578327	2020	6735 YUCCA ST #204	\$555,000	2+2.5	858-755-0216	*	12-578389	629J6	20404 ROCA CHICA DR	\$1,799,000	3+3	310-456-6431	*								
HOLLYWOOD										Income											
12-578653	593E5	6537 LA MIRADA AVE	\$995,000		818-988-9200	*	12-577705	626J7	31239 BAILARD RD	\$1,695,000	2+2	310-456-0220	*								
HOLLYWOOD										Lease											
12-578959	593F4	1480 VINE ST #1802	\$8,500	2+2	323-860-4900	*	12-577851	629E2	23307 W BOCANA ST	\$1,249,000	4+3	818-783-7721	*								
12-578859	593F4	1480 VINE ST #1501	\$4,000	1+2	323-860-4900	*	MALIBU										Condo / Co-op				
12-578001	593F4	1645 N VINE ST #1001	\$3,350	0+1	310-278-3311	*	12-578755	630E6	18125 COASTLINE DR	\$1,849,000	3+2.5	310-820-0195	*								
12-578629	593E3	6665 FRANKLIN AVE #1	\$2,600	2+2	310-777-6200	*	12-578065	630E6	18219 COASTLINE DR #8	\$799,000	2+2	310-801-0265	*								
12-578753	593E3	2330 CAHUENGA #203	\$2,000	2+2	888-999-6575	*	MALIBU										Land				
12-578759	593E3	2330 CAHUENGA #101	\$2,000	2+2	888-999-6575	*	12-578003	629H6	0 BIG ROCK DRIVE	\$4,500,000	Land	310-457-6550	*								
12-578769	593E3	2330 CAHUENGA #104	\$1,525	1+1	888-999-6575	*	12-578751	627H1	400 BALLER	\$400,000	Land	424-249-8006	*								
HOLLYWOOD HILLS EAST										Single Family											
12-578275	593G1	3110 HOLLYRIDGE DR	\$1,888,000	4+3.5	310-652-6285	*	12-578789	625E1	0 YERBA BUENA	\$375,000	Land	310-456-3638	*								
12-578437	593F2	6313 BRYN MAWR DR	\$1,595,000	4+4	310-432-6400	*	12-578739	627H2	1000000 BALLER RD	\$280,000	Land	424-249-8006	*								
12-577965	593G2	2760 PELHAM PL	\$1,249,000	3+2	310-275-1000	*	12-578451	629F6	3667 RAMBLA PACIFICO	\$269,000	Land	310-456-6431	*								
12-578463	593G2	2403 ASPEN DR	\$859,000	3+2	310-500-3900	*	MALIBU										Lease				
12-578215	593E3	2010 HOLLY HILL TER	\$849,000	3+2	323-270-9303	*	12-578525	629J6	20468 SEABOARD RD	\$13,500	4+4.5	310-456-1171	*								
12-578951	593E2	2329 HOLLY DR	\$699,000	3+4	323-762-2600	*	12-578973	629F6	3768 LAS FLORES CANYON RD	\$12,500	4+5	310-456-0220	*								
12-578503	593G1	6201 RODGERTON DR	\$550,000	4+4	310-698-3625	*	12-578747	625F5	11457 TONGAREVA ST	\$2,200	1+1	310-589-1155	*								
HOLLYWOOD HILLS EAST										Condo / Co-op											
12-578277	593G2	2604 N BEACHWOOD DR #4	\$319,500	1+1	323-462-0867	*	MALIBU										Residential Manufactured/Mobile Home				
HOLLYWOOD HILLS EAST										Income											
12-578425	593F3	2127 VINE ST	\$1,039,000		323-300-1000	*	12-578475	625G6	200 PARADISE COVE RD	\$749,000	3+2	310-456-5621	*								
HOLLYWOOD HILLS EAST										Lease											
12-578447	593F3	2103 ALCYONA DR	\$6,000	5+4.5	310-278-3311	*	MALIBU BEACH										Single Family				
12-578965	593F3	1920 CARMEN AVE #1922	\$2,600	3+1	323-671-1200	*	12-578651	629F6	21408 PACIFIC COAST HWY	\$8,795,000	5+5.5	310-278-3311	*								
INGLEWOOD										Single Family											
12-578471	703F7	11539 SIMMS AVE	\$295,000	4+2	323-770-4708	*	12-577749	667F4	29042 CLIFFSIDE DR	\$8,750,000	4+4	310-457-6550	*								
12-577677	673E7	1034 E 66TH ST	\$183,900	2+1	310-970-4000	*	MALIBU BEACH										Lease				
INGLEWOOD										Condo / Co-op											
12-578051	703D3	433 E TAMARACK AVE #158	\$125,000	2+3	310-305-8333	*	12-578717	629F6	21408 PACIFIC COAST HWY	\$39,500	5+5	310-278-3311	*								
LOS ANGELES SOUTHWEST										Single Family											
12-578329	703H1	2016 W 78TH ST	\$319,000	3+2	310-954-0808	*	12-578111	629F6	21322 PACIFIC COAST HWY	\$30,000	4+4	310-456-5621	*								
12-578427	673D6	4267 W 59TH ST	\$265,000	3+2	310-256-3038	*	12-578833	668B1	26520 LATIGO SHORE DR	\$29,000	4+4.5	310-457-6550	*								
12-578515	703J6	1626 W 113TH ST	\$254,900	3+1	323-750-3690	*	12-578539	629E6	21844 PACIFIC COAST HWY	\$20,000	3+2		*								
12-578677	673J6	1453 W 62ND ST	\$239,900	2+1	310-826-8200	*	12-578073	629D6	22008 PACIFIC COAST HWY	\$17,500	3+3	310-456-6771	*								
12-577863	674A4	1217 W 47TH ST	\$215,900	4+2	310-432-6400	*	12-577999	625G6	27208 PACIFIC COAST HWY	\$11,000	3+2.5	310-456-6431	*								
12-578711	673H4	4601 S WILTON PL	\$210,000	2+1	310-777-6200	*	12-577841	625E4	42750 PACIFIC COAST HWY	\$10,000	2+2.5	310-457-6550	*								
12-578777	673F6	3142 59TH PL	\$150,000	4+2	323-297-1533	*	12-578253	667D4	29500 HEATHERCLIFF #151	\$9,000	4+3.5	310-456-1171	*								
LOS ANGELES SOUTHWEST										Condo / Co-op											
12-577925	673C4	4646 DON LORENZO DR #E	\$228,900	3+2	310-559-5570	*	12-578383	626H7	31641 SEA LEVEL DR	\$5,900	3+2	310-456-3655	*								
LOS ANGELES SOUTHWEST										Income											
12-577795	673F3	4172 LEIMERT	\$1,600,000		323-750-4445	*	12-578081	625F5	11770 PACIFIC COAST HWY #T	\$5,000	3+3	424-249-8006	*								
12-577799	673F6	6203 CRENSHAW	\$1,500,000		323-750-4445	*	12-578459	625G6	20120 PACIFIC COAST HWY #2	\$3,000	1+1	310-598-5465	*								
12-577831	673F6	6332 CRENSHAW	\$1,100,000		323-750-4445	*	12-578461	625G6	20120 PACIFIC COAST HWY #3	\$3,000	1+1	310-598-5465	*								

IFC - INSIDE FRONT COVER, IBC - INSIDE BACK COVER, BC - BACK COVER

NEW LISTINGS DIRECTORY

* THEMLS^{PRO}™ NEW LISTINGS

NEW LISTINGS DIRECTORY

METROPOLITAN SOUTH			Income		
12-578371	704C1	318 W 80TH ST	\$349,000		310-623-1300 *
12-578905	704E6	11110 BELHAVEN AVE	\$164,900		310-419-7900 *
12-578011	704F1	1409 NADEAU ST	\$59,000		310-887-6400 *
METROPOLITAN SOUTHWEST			Single Family		
12-578675	703G3	8907 HAAS AVE	\$375,000	4+2	310-271-2229 *
12-578567	703H4	1910 W 93RD ST	\$259,000	3+1	310-665-1145 *
12-578907	703J3	8734 DALTON AVE	\$225,000	3+2	323-290-4086 *
12-578685	733J1	1509 W 125TH ST	\$210,000	2+2	562-860-2625 *
12-578285	734B1	839 W 124TH ST	\$170,000	2+1	310-590-1235 *
METROPOLITAN SOUTHWEST			Income		
12-578209	704A3	1152 W 88TH ST	\$749,000		800-840-2248 *
12-577693	674D2	313 E 36TH ST	\$369,000		818-432-1695 *
MID LOS ANGELES			Single Family		
12-578423	633C4	1367 S COCHRAN AVE	\$390,000	0+0	213-385-4989 *
12-578115	633E7	2946 SOMERSET DR	\$339,999	4+2	323-299-7900 *
12-578877	633J7	2635 BRIGHTON AVE	\$295,000	3+2	323-734-9200 *
MID LOS ANGELES			Condo / Co-op		
12-578047	673D2	4046 ABOURNE RD #D	\$54,900	1+1	888-741-6148 *
MID LOS ANGELES			Income		
12-578955	633B4	1501 S SIERRA BONITA AVE	\$599,000		213-385-6500 *
12-577781	633B5	1891 S CURSON AVE	\$500,000		310-826-8200 *
12-577983	633G5	1820 CIMARRON ST	\$479,000		909-938-4663 *
12-578319	673H2	3779 S HOBART	\$359,000		310-413-7089 *
12-578807	633F6	4030 W 21ST ST	\$329,000		310-649-2028 *
12-578317	673H2	1614 MIDDLETON PL	\$254,900		323-759-7446 *
MID-WILSHIRE			Condo / Co-op		
12-578087	633H4	966 S ST ANDREWS PL #202	\$375,000	0+0	818-349-9997 *
12-578261	634A2	631 S KENMORE AVE #303	\$279,900	2+2	310-205-0305 *
12-578595	633H3	3810 WILSHIRE #703	\$210,000	1+1	213-251-9888 *
12-578183	633H2	358 S GRAMERCY PL #312	\$195,000	1+1	310-215-0788 *
12-578343	634A3	698 S BERENDO ST #203	\$194,900	2+2	323-933-0330 *
12-578181	634B2	525 S LA FAYETTE PARK PL #306	\$131,500	1+1	310-665-8694 *
12-578757	633J2	525 S ARDMORE AVE #353	\$59,000	0+1	310-482-2200 *
MID-WILSHIRE			Income		
12-577911	633J2	528 S HOBART BLVD	\$1,800,000		213-385-4989 *
12-578175	634B3	830 S HOOVER ST	\$1,100,000		800-840-2248 *
12-578635	634A3	836 S CATALINA ST	\$925,000		310-777-6200 *
12-578349	593J7	311 N HELIOTROPE DR	\$489,000		323-462-7436 *
MID-WILSHIRE			Lease		
12-578397	633G3	871 CRENSHAW #302	\$2,850	3+2	213-760-4455 *
12-578193	633H3	3810 WILSHIRE #1610	\$2,000	1+1	213-674-0791 *
MOUNT WASHINGTON			Single Family		
12-578453	595A2	1153 OLANCHA DR	\$695,000	3+2	800-840-2248 *
12-577745	595A5	3569 SHURTLIFF CT	\$364,900	2+1	323-762-2600 *
MOUNT WASHINGTON			Land		
12-577743	594J2	2553 SUNDOWN DRIVE	\$120,000	Land	310-954-0808 *
PACIFIC PALISADES			Single Family		
12-578191	630G5	370 VIA FLORENCE	\$9,995,000	5+7.5	310-858-6800 *
12-578185	631B6	14930 ALVA DR	\$5,750,000	5+6	310-278-3311 *
12-578147	631A5	1000 MONUMENT ST	\$1,649,000	3+2.5	310-573-4245 *
12-578801	631A4	1300 MONUMENT ST	\$1,560,000	3+2	310-275-2222 *
12-577701	630H4	16912 SCENIC PL	\$1,499,000	3+3.5	310-454-1111 *
12-578337	630H5	16821 W SUNSET	\$949,000	3+2	805-201-2820 *
PACIFIC PALISADES			Condo / Co-op		
12-577707	630G6	17337 TRAMONTO DR #311	\$769,000	2+2	310-573-4245 *
PACIFIC PALISADES			Lease		
12-578743	631B5	910 CHAUTAUQUA BLVD	\$17,000	5+4.5	424-203-1800 *
12-577593	630J6	15851 ASILOMAR BLVD	\$8,500	4+3	310-230-3700 *
12-578251	631A4	1344 MONUMENT ST	\$7,800	4+3	310-230-3700 *
12-578141	631A5	1000 MONUMENT ST	\$6,500	3+2.5	310-573-4245 *
12-578483	630F2	1282 CALLE DE SEVILLA	\$5,500	4+4.25	310-275-1000 *
12-577713	630G6	17337 TRAMONTO DR #311	\$4,399	2+2	310-573-4245 *
12-578565	630G6	17366 SUNSET #201	\$3,500	1+1	310-474-5808 *
12-578869	631A4	15515 SUNSET BLVD #217	\$3,500	2+2.5	310-820-0195 *
PACIFIC PALISADES			Residential Manufactured/Mobile Home		
12-578523	630J6	16321 PACIFIC COAST HWY #157	\$220,000	1+1	310-273-3113 *
PALMS - MAR VISTA			Single Family		
12-577779	672E3	3967 ALBRIGHT AVE	\$949,000	3+2.5	310-633-4257 *
12-577599	672A3	12906 WARREN AVE	\$699,000	3+1.5	310-826-8200 *
12-578083	672C5	4320 CHASE AVE	\$610,000	2+2	310-301-3500 *
12-577685	672B2	3220 COLONIAL AVE	\$575,000	3+1.75	310-447-8500 *
12-577889	672D5	4509 GRAND VIEW BLVD	\$499,000	2+1	310-301-2323 *
12-578723	672A3	1501 WALGROVE AVE	\$469,000	3+2	310-482-2200 *

PALMS - MAR VISTA			Condo / Co-op		
12-578401	672G1	9808 REGENT ST #6	\$472,000	2+3	310-837-7161 *
PALMS - MAR VISTA			Income		
12-577971	632J6	2610 LA CIENEGA AVE	\$499,900		310-559-5570 *
PALMS - MAR VISTA			Lease		
12-577895	672B4	3764 ROSEWOOD AVE	\$3,995	2+2	310-306-6525 *
PARK HILLS HEIGHTS			Single Family		
12-577671	673A7	5314 W GOLDENWOOD DR	\$531,500	4+3	310-338-5400 *
12-578795	673C6	4650 W 63RD ST	\$350,000	2+1	310-674-3863 *
12-578831	673D1	3522 POTOMAC AVE	\$305,000	3+1	323-906-8383 *
12-578701	673H4	4419 S GRAMERCY PL	\$299,000	3+2	310-770-2646 *
12-577775	673D6	4216 W 59TH PL	\$285,000	3+3	323-571-6834 *
PARK HILLS HEIGHTS			Income		
12-577979	673E7	6521 BRYNHURST AVE	\$149,000		310-887-6400 *
12-577995	633C7	2950 S RIMPAU	\$119,000		310-887-6400 *
PARK HILLS HEIGHTS			Lease		
12-578593	673E2	3760 WELLINGTON RD	\$2,000	3+2	310-665-1145 *
PLAYA DEL REY			Single Family		
12-578195	702A3	100 REES ST	\$1,800,000	5+3	310-907-6517 *
PLAYA DEL REY			Condo / Co-op		
12-578545	702C3	8162 MANITOBA ST #320	\$350,000	2+2	310-858-6800 *
12-577903	702B3	8300 MANITOBA ST #214	\$289,900	2+1	310-640-3040 *
PLAYA VISTA			Condo / Co-op		
12-577691	702D1	13173 PACIFIC PROMENADE #111	\$485,000	2+2.5	800-399-9659 *
12-578125	702D1	6400 CRESCENT #313	\$299,000	1+1	310-306-6525 *
12-578925	702D1	13045 PACIFIC PROMENADE #238	\$289,000	1+1	310-376-4600 *
SANTA MONICA			Single Family		
12-578473	631B6	634 HIGHTREE RD	\$3,695,000	6+5.5	424-203-1800 *
12-577637	631E5	363 21ST PL	\$2,550,000	4+3.75	424-203-1800 *
12-577947	631G5	902 FRANKLIN ST	\$2,495,000	4+3.5	310-454-0080 *
12-578969	631D6	428 14TH ST	\$1,649,500	3+1	818-995-2424 *
12-577759	671G4	3009 2ND ST	\$1,649,000	3+2.5	310-278-3311 *
12-577943	631G6	2919 WASHINGTON AVE	\$1,325,000	3+2	310-829-3939 *
SANTA MONICA			Condo / Co-op		
12-578289	671F3	2115 3RD ST #203	\$1,499,000	3+3.5	310-829-3939 *
12-578499	671G5	212 MARINE ST #301	\$1,495,000	2+2	310-907-6517 *
12-578117	671C1	515 OCEAN AVE #403S	\$1,250,000	2+2	310-820-0195 *
12-578521	671C1	723 PALISADES BEACH RD #109	\$1,049,000	2+2	310-829-3939 *
12-578487	631E7	824 16TH ST #1	\$819,000	2+2.5	310-459-5886 *
12-577757	631E7	1119 15TH ST #4	\$507,000	2+2	310-820-0195 *
12-578255	671F2	1524 10TH ST #10	\$460,000	2+2	310-829-0629 *
12-577919	671D1	828 5TH ST #5	\$299,107	0+1	310-205-0050 *
SANTA MONICA			Income		
12-578167	671F1	1223 14TH ST	\$1,650,000		213-386-8888 *
12-578619	671H2	2019 OAK ST	\$1,200,000		310-300-3333 *
12-578279	631H6	3211 COLORADO AVE	\$1,150,000		310-907-6517 *
12-578373	631J7	3014 EXPOSITION	\$990,000		323-899-8923 *
SANTA MONICA			Lease		
12-578569	671E3	11 MARINE TER #1	\$28,000	3+3.5	310-458-0091 *
12-577719	631C7	267 AMALFI DR	\$25,000	3+4	310-205-0305 *
12-577939	671D2	1221 OCEAN AVE #1507	\$15,500	2+2	424-203-1800 *
12-577601	631D5	238 19TH ST	\$11,900	4+4	310-860-7595 *
12-577941	671D2	1221 OCEAN AVE #1208	\$11,700	2+2	424-203-1800 *
12-577933	671D2	1221 OCEAN AVE #101	\$11,000	2+2	424-203-1800 *
12-578577	671F5	26 SEA COLONY DR	\$8,500	2+3	323-762-2600 *
12-578725	631B7	95 OCEAN WAY	\$7,900	3+2	310-820-6651 *
12-578019	631C7	201 OCEAN AVE #P808	\$7,500	2+2.5	310-474-5808 *
12-578297	671D1	1018 4TH ST #304	\$5,900	2+3	310-458-0091 *
12-578249	671C1	723 PALISADES BEACH RD #210	\$5,500	2+2	310-207-7080 *
12-578887	671D2	1033 OCEAN AVE #302	\$4,600	2+2	310-264-2225 *
12-578353	631F7	944 19TH ST	\$3,250	2+1	310-393-4506 *
12-578941	631F7	1010 19TH ST #9	\$2,900	2+2	310-458-0091 *
12-578839	671H3	1316 OAK ST	\$2,595	2+1	310-390-6655 *
12-577769	671F1	1438 15TH #2	\$2,380	2+1.5	310-391-5074 *
SILVER LAKE - ECHO PARK			Single Family		
12-577893	594D3	2648 ARMSTRONG AVE	\$869,000	3+1.5	323-665-1700 *
12-578273	594C4	2493 LANTERMAN TER	\$799,000	3+1.5	323-665-1700 *
12-578885	594B6	1308 MALTMAN AVE	\$695,000	2+1	323-935-1555 *
12-578325	634D1	2134 KENT ST	\$499,400	3+2	323-316-9800 *
12-578771	594E6	1635 N ALVARADO ST	\$194,000	1+1	818-708-6300 *
SILVER LAKE - ECHO PARK			Income		
12-578377	594B7	572 N VIRGIL AVE #2	\$710,000		323-385-4290 *
12-578171	634B1	216 S VENDOME ST	\$699,000		424-202-3200 *
SILVER LAKE - ECHO PARK			Land		
12-577639	634C2	126 N PARK VIEW ST	\$225,000	Land	213-623-7800 *

* THEMLS ^{PRO} ™ NEW LISTINGS										NEW LISTINGS DIRECTORY										IFC - INSIDE FRONT COVER, IBC - INSIDE BACK COVER, BC - BACK COVER	
12-578443	594C6	3229	DESCANSO DR	\$170,000	Land	323-671-1200	*	12-578535	593C6	751	MARTEL AVE	\$5,000	3+2	310-461-0400	*	NEW LISTINGS DIRECTORY					
SUNSET STRIP - HOLLYWOOD HILLS WEST										Single Family											
12-578411	592H4	1734	N DOHENY DR	\$12,450,000	5+6	310-623-1300	*	12-578713	592J6	8561	WEST KNOLL DR	\$2,350	2+2	310-271-2229	*						
12-578631	592H4	9212	NIGHTINGALE DR	\$8,250,000	4+5	310-623-1300	*	12-577819	593B6	932	OGDEN DR	\$1,950	2+1	310-623-1300	*						
12-577709	592J4	1901	SUNSET PLAZA DR	\$7,250,000	5+6	424-202-3200	*	WEST L.A.										Condo / Co-op			
12-578351	592H5	9140	ST IVES DR	\$4,595,000	4+6	310-623-1300	*	12-578205	631H6	1530	S CENTINELA AVE #303	\$669,000	3+2.5	310-482-2200	*						
12-577901	593A5	1440	N KINGS RD	\$3,395,000	4+4	310-724-7000	*	12-578211	631H6	1530	S CENTINELA AVE #203	\$649,000	3+2.5	310-482-2200	*						
12-578719	592J5	8657	METZ PL	\$2,449,000	3+3	310-278-3311	*	12-577915	631H6	1420	S BUNDY DR #105	\$629,000	3+2	888-777-0364	*						
12-578583	592J4	8576	COLE CREST DR	\$2,323,998	3+4	310-724-7100	*	12-578221	631H6	1530	S CENTINELA AVE #101	\$569,000	2+2	310-482-2200	*						
12-578217	593B4	1626	N GENESEE AVE	\$1,780,000	3+3.5	424-230-3700	*	12-578469	631H6	1530	S CENTINELA AVE #102	\$549,000	2+2.5	310-482-2200	*						
12-577845	593B4	7917	HOLLYWOOD	\$1,749,000	3+3	310-777-6200	*	12-577827	632A5	1818	COLBY AVE #103	\$539,000	2+2	310-482-2200	*						
12-578485	593B4	1552	N OGDEN DR	\$1,425,000	3+3.5	323-665-1700	*	12-577703	631H5	1312	S SALTAIR AVE #104	\$459,999	2+2	424-203-1800	*						
12-578721	593C1	7356	PYRAMID PL	\$1,299,000	3+2	310-623-1300	*	WEST L.A.										Lease			
12-578699	593C4	7503	FRANKLIN AVE	\$1,295,000	4+3	310-777-6200	*	12-577877	632D7	10930	W NATIONAL BLVD #102	\$2,950	2+2	310-478-1835	*						
12-578865	593A3	8121	GOULD AVE	\$1,249,000	3+3	310-777-6200	*	12-578055	632A5	1730	SAWTELLE BLVD. #212	\$2,621	2+2	310-479-5555	*						
12-578531	593A3	1917	WEEPAH WAY	\$750,000	2+2	310-855-0100	*	12-577811	631H6	1546	AMHERST AVE #TOP	\$2,299	2+2	310-578-0348	*						
12-578341	563D7	3167	LAKE HOLLYWOOD DR	\$749,000	2+2	323-570-2202	*	WESTCHESTER										Single Family			
SUNSET STRIP - HOLLYWOOD HILLS WEST										Condo / Co-op											
12-578033	593D4	7250	FRANKLIN AVE #1103	\$329,000	1+1.5	213-674-0791	*	12-578301	702F1	7508	WESTLAWN AVE	\$1,359,000	7+7	310-642-7653	*						
12-577875	593C4	1745	CAMINO PALMERO ST #111	\$175,000	0+1	310-777-7800	*	12-577957	702F1	7806	DUNBARTON AVE	\$799,000	4+2	310-378-7747	*						
SUNSET STRIP - HOLLYWOOD HILLS WEST										Income											
12-578063	593B4	8067	WOODLAND LANE	\$1,099,000		310-443-4269	*	12-578067	702G3	6429	W 87TH PL	\$749,000	4+3	310-642-7653	*						
SUNSET STRIP - HOLLYWOOD HILLS WEST										Lease											
12-578655	593A5	1478	KINGS RD	\$45,000	4+2	310-278-3311	*	12-578379	702H1	5863	W 77TH PL	\$719,000	3+2	310-642-7653	*						
12-577741	593D3	2010	LA BREA TER	\$35,000	5+5	310-461-0400	*	12-578101	702J1	5934	ABERNATHY DR	\$519,000	2+1	310-642-7653	*						
12-577927	592J4	1545	N KINGS RD	\$12,000	3+2	310-278-3311	*	12-577951	702J2	7821	KITTYHAWK AVE	\$429,000	3+1	310-642-7653	*						
12-578477	592H3	8778	WONDERLAND AVE	\$12,000	4+3	818-999-2030	*	WESTCHESTER										Lease			
12-578493	593A2	7674	WILLOW GLEN RD	\$10,000	3+3.5	310-461-0400	*	12-577849	702D2	7455	80TH ST	\$7,500	4+5	310-305-4200	*						
12-578679	593A2	2521	APOLLO DR	\$9,450	6+7	310-559-5570	*	12-578315	703A1	5425	77TH ST	\$3,000	3+2	310-642-7653	*						
12-578149	592H2	8925	HOLLYWOOD HILLS RD	\$7,995	2+3	424-230-3700	*	WESTWOOD - CENTURY CITY										Single Family			
12-578909	592H3	9027	WONDERLAND AVE	\$7,995	5+4.5	310-724-7100	*	12-578823	632C2	815	S BEVERLY GLEN BLVD	\$2,795,000	7+6	310-274-4000	*						
12-577879	592J5	1251	SUNSET PLAZA DR	\$7,750	3+3.5	310-278-3311	*	12-578097	632C2	801	HOLMBY AVE	\$1,895,000	5+4	310-481-6262	*						
12-578059	593A5	1455	KINGS RD	\$6,950	4+5	626-440-5100	*	12-578107	632D3	1627	PANDORA AVE	\$1,895,000	5+3.5	310-481-6262	*						
12-578737	593C1	7356	PYRAMID PL	\$4,700	3+2	310-623-1300	*	12-578025	632D3	1563	ENSLEY AVE	\$1,425,000	3+1.75	310-500-3900	*						
12-578541	593A3	1917	WEEPAH WAY	\$3,600	2+2	310-855-0100	*	12-578223	632D3	1741	ENSLEY AVE	\$1,199,000	3+2	310-271-2229	*						
12-577809	593A4	8326	KIRKWOOD DR	\$3,450	3+2	310-278-9470	*	12-578597	632E4	10329	KESWICK AVE	\$739,000	2+2	310-273-3113	*						
12-577765	593D3	6915	PASEO DEL SERRA	\$1,600	1+1	323-851-5512	*	WESTWOOD - CENTURY CITY										Condo / Co-op			
TOPANGA										Single Family											
12-578027	590C3	20851	CHENEY DR	\$2,249,000	4+3	310-383-3601	*	12-578057	632B3	10724	WILSHIRE #1006	\$1,356,000	3+3.5	310-826-8200	*						
12-577891	590B7	19554	CAVE WAY	\$779,000	3+2	310-455-3200	*	12-577821	632C3	10560	WILSHIRE #1603	\$1,150,000	2+3	310-277-7529	*						
VENICE										Single Family											
12-578069	671H6	237	LINNIE CANAL	\$1,595,000	2+2	310-306-6525	*	12-577623	632E3	2132	CENTURY PARK LN #315	\$995,000	3+3	310-258-9973	*						
12-577753	671G5	43	OZONE AVE #A	\$1,425,000	3+3.5	310-823-1823	*	12-577977	632F4	10126	EMPHYREAN WAY #201	\$849,000	2+2.5	310-777-6200	*						
12-578429	671J6	817	CRESTMOORE PL	\$1,150,000	2+1	310-275-1000	*	12-578369	632C2	10501	WILSHIRE BLVD #1803	\$785,000	2+2	310-432-6400	*						
12-578197	671J4	1147	LAKE ST	\$957,500	4+3	310-623-1300	*	12-578937	632C4	1943	PELHAM AVE #PH2	\$629,000	3+2	310-300-3333	*						
VENICE										Income											
12-578509	671H5	668	WESTMINSTER AVE	\$1,207,500		310-777-6200	*	12-577657	632C3	10687	WILKINS AVE #6	\$541,500	3+3	310-447-8500	*						
VENICE										Lease											
12-578405	671G5	510	PACIFIC AVE #1	\$1,695	1+1	310-478-1835	*	12-578943	632A4	1535	S BENTLEY AVE #104	\$539,000	2+2	310-273-3113	*						
WEST HOLLYWOOD VICINITY										Single Family											
12-577945	592H6	935	N SAN VICENTE BLVD	\$1,199,000	4+3	310-278-3311	*	12-577987	632E4	10345	ALMAYO AVE #206	\$524,900	2+2	310-207-7080	*						
12-578591	593C6	852	N SIERRA BONITA AVE	\$880,000	3+2	760-599-4661	*	12-577883	632B4	1647	VETERAN AVE #E	\$520,000	2+2.5	310-559-5570	*						
12-577591	593A6	915	N CRESCENT HEIGHTS	\$690,000	2+2	310-481-6262	*	12-578041	632B5	1865	GREENFIELD AVE #108	\$455,000	2+2	310-482-2500	*						
12-578615	593B5	1246	N GENESEE AVE	\$614,000	2+1	562-622-7275	*	12-577785	632C4	1916	PELHAM AVE #4	\$445,000	3+3	310-777-6200	*						
WEST HOLLYWOOD VICINITY										Condo / Co-op											
12-578439	592J6	1100	ALTA LOMA RD #1404	\$1,349,000	2+2.5	310-777-7800	*	12-578367	632C2	10501	WILSHIRE #1704	\$415,000	1+2	310-432-6400	*						
12-578077	593B6	1037	N LAUREL AVE #19	\$995,000	2+1.75	310-278-3311	*	12-578555	632B5	1885	VETERAN AVE #105	\$412,000	2+2	916-224-7720	*						
12-578923	593A6	825	N KINGS RD #9	\$795,000	2+2	310-623-1300	*	12-578381	632E3	2160	CENTURY PARK EAST #1210	\$399,500	1+1	310-966-0900	*						
12-578847	593A6	850	N CROFT AVE #105	\$749,000	2+2	310-205-0305	*	WESTWOOD - CENTURY CITY										Lease			
12-578883	593B6	1037	N LAUREL AVE #15	\$575,000	2+2	310-278-3311	*	12-578269	632E4	1	CENTURY DR #7D	\$15,500	2+2.5	626-204-3300	*						
12-578829	592J6	846	WESTBOURNE DR #3	\$560,000	2+2.5	323-464-9272	*	12-577833	632F4	2220	AVENUE OF THE STARS #501W	\$7,900	2+3	310-273-3113	*						
12-578491	592J5	8455	FOUNTAIN AVE #527	\$559,000	2+2	310-652-6285	*	12-578657	632C3	10560	WILSHIRE #1603	\$5,900	2+3	310-277-7529	*						
12-578749	592H5	1230	HORN AVE #528	\$499,000	2+2	310-623-1300	*	12-578187	632D3	1423	S BEVERLY GLEN BLVD #B	\$5,850	4+4	818-349-9997	*						
12-578919	593A6	949	N KINGS RD #307	\$459,000	2+2	310-844-6515	*	12-578761	632B3	10795	WILSHIRE #102	\$5,000	2+2.5	310-276-6236	*						
12-578347	592H6	999	N DOHENY DR #402	\$369,000	0+1	310-474-1191	*	12-577727	632C3	10442	WILKINS AVE	\$4,995	3+2.5	818-757-4567	*						
12-578173	592H6	838	N DOHENY DR #202	\$359,900	1+1	310-559-5570	*	12-577887	632E3	2132	CENTURY PARK LN #309	\$4,800	2+3	310-271-2229	*						
12-578781	593A5	1121	N OLIVE DR #107	\$329,000	1+1	310-623-1300	*	12-577651	632B4	1560	KELTON AVE	\$4,500	3+1.5	310-273-3113	*						
12-577631	593C5	1355	N SIERRA BONITA AVE #310	\$315,000	1+1	310-623-1300	*	12-578391	632F3	2170	CENTURY PARK EAST #1610S	\$3,600	1+1	310-203-8383	*						
12-577687	593A5	1250	N KINGS RD #409	\$299,000	1+1	310-278-9470	*	12-577825	632D2	875	COMSTOCK AVE #17C	\$3,500	1+1	310-271-2229	*						
12-578123	592H6	970	PALM AVE #302	\$275,000	1+1	310-788-0700	*	12-578137	632F3	2170	CENTURY PARK EAST #1804	\$3,500	1+1	310-203-8383	*						
12-577605	592H6	906	N DOHENY DR #318	\$274,900	1+1	310-447-8500	*	12-578551	632C3	10373	ASHTON AVE	\$3,500	2+1.5	310-273-3113	*						
WEST HOLLYWOOD VICINITY										Income											
12-578693	593C6	843	N FULLER AVE	\$999,000		323-692-9900	*	12-577665	632B3	10824	LINDBROOK DR #10814	\$3,175	2+1.								

IFC - INSIDE FRONT COVER, IBC - INSIDE BACK COVER, BC - BACK COVER

NEW LISTINGS DIRECTORY

* THEMLS PRO™ NEW LISTINGS

NEW LISTINGS DIRECTORY

CALABASAS							Single Family
12-577913	559A3	25825 SHADY GROVE PL	\$1,749,000	5+4.5	310-273-3113	*	
12-578079	589C5	24979 MULHOLLAND HWY	\$1,698,000	6+5.5	310-456-3638	*	
12-578313	589A7	809 THORNHILL RD	\$779,000	3+1.75	800-219-9169	*	
CALABASAS							Lease
12-578431	589C5	25044 MULHOLLAND HWY	\$8,950	5+6.5	310-456-6431	*	
CANOGA PARK							Condo / Co-op
12-578899	530B1	21019 GRESHAM ST #22	\$154,950	1+2	818-757-4567	*	
12-578957	530A2	21800 SCHOENBORN ST #219	\$70,000	1+1	800-399-9659	*	
CHATSWORTH							Condo / Co-op
12-578445	500A5	10055 TOPANGA CANYON #6	\$188,000	2+2	310-820-6651	*	
EAST VAN NUYS							Single Family
12-578587	562C1	5703 VENTURA CANYON AVE	\$425,000	3+2	818-783-7721	*	
12-578681	532A4	14223 RUNNYMEDE ST	\$339,900	4+2	818-432-1500	*	
ENCINO							Single Family
12-578467	561C2	17352 MAGNOLIA	\$3,495,000	6+7	424-202-3200	*	
12-577791	561F6	16039 SKYTOP RD	\$2,195,000	4+4.5	310-777-6200	*	
12-577755	561C5	17045 MOONCREST DR	\$949,000	4+2.5	310-482-2500	*	
12-578929	561B1	5830 ENCINO AVE	\$465,000	3+2	818-990-0454	*	
ENCINO							Lease
12-578779	561F3	16201 HARTSOOK ST	\$4,500	5+3.5	310-623-1300	*	
LAKE BALBOA							Single Family
12-578061	531C4	7238 WISH AVE	\$419,900	4+2	310-305-8333	*	
12-578395	531C6	17226 LEMAY ST	\$399,000	3+2	800-736-9634	*	
12-577729	531D4	7442 WHITAKER AVE	\$374,000	3+1.75	818-761-7222	*	
12-578703	531D6	16622 HAYNES ST	\$349,000	3+2	310-205-0305	*	
12-578157	531D4	7503 RUFFNER AVE	\$339,000	3+2	310-301-3500	*	
MOORPARK							Single Family
12-577611	496D3	12462 SPRING CREEK RD	\$555,000	4+3	818-585-5668	*	
NORTH HOLLYWOOD							Single Family
12-578741	532E2	12601 WILLARD ST	\$326,000	3+2	310-271-2229	*	
NORTHRIDGE							Income
12-578799	531A2	17956 SCHOENBORN ST	\$649,000		310-432-6400	*	
PORTER RANCH							Single Family
12-578881	480G7	11711 AVENIDA DEL SOL	\$1,000,000	4+3	818-363-1717	*	
PORTER RANCH							Lease
12-577661	480F6	19625 SHADOW GLEN CIR	\$2,895	3+3	310-376-4600	*	
RESEDA							Single Family
12-578669	530F4	7523 MELVIN AVE	\$439,900	4+3	310-454-1111	*	
RESEDA							Condo / Co-op
12-577625	531B5	17522 SHERMAN WAY #201	\$289,000	2+2	323-665-1700	*	
12-578165	530G4	7315 BONNIE PL	\$249,000	3+3	213-380-9996	*	
12-577807	530H6	6625 WILBUR AVE #17	\$169,900	4+2	310-820-6651	*	
SAN FERNANDO							Single Family
12-577771	501J1	14758 HAGAR ST	\$259,900	4+2	818-552-4300	*	
SAN FERNANDO							Lease
12-578735	560G2	5445 SYLVIA AVE	\$3,260	5+4	818-730-1213	*	
SHERMAN OAKS							Single Family
12-578671	562D7	3523 DIXIE CANYON PL	\$1,200,500	4+5	662-266-2706	*	
12-578235	562A1	5705 VESPER AVE	\$523,000	3+1.5	818-783-7721	*	
SHERMAN OAKS							Condo / Co-op
12-578527	562A5	14538 BENEFIT ST #304	\$539,000	2+3	818-528-3200	*	
12-578893	561J4	4542 WILLIS AVE #301	\$475,000	2+2	310-383-2994	*	
12-578511	561J3	15002 MAGNOLIA #1	\$205,000	2+2	310-305-8333	*	
SHERMAN OAKS							Land
12-578457	561F7	3553 ALANA DR	\$599,000	Land	818-790-6774	*	
SHERMAN OAKS							Lease
12-578229	561J6	3701 LOADSTONE DR	\$5,400	5+3	818-386-6888	*	
12-578071	561J3	15043 HARTSOOK ST	\$3,100	2+2	310-777-7800	*	
12-578697	561J4	4501 CEDROS AVE #136	\$1,850	2+2	310-777-7800	*	
SIMI VALLEY							Lease
12-577663	498A4	1939 SPARKS CT	\$2,395	4+2	818-363-1717	*	
STUDIO CITY							Land
12-577989	562E6	3633 ALTA MESA DR	\$350,000	Land	323-300-1000	*	
12-578421	562E6	3643 ALTA MESA DR	\$350,000	Land	323-300-1000	*	
STUDIO CITY							Lease
12-578465	562E5	12927 DICKENS ST	\$4,500	3+3	310-855-0100	*	
SYLMAR							Single Family
12-578335	482D5	12659 HUNNEWELL AVE	\$299,000	5+2.75	818-285-5626	*	

TARZANA							Single Family
12-577935	560G1	5813 VANALDEN AVE	\$529,900	4+2	949-294-6599	*	
THOUSAND OAKS							Single Family
12-577635	526G3	892 CALLE FRESNO	\$499,900	4+2.5	818-285-5626	*	
WEST HILLS							Single Family
12-578663	529F5	23434 SHERMAN WAY	\$385,000	4+3	818-995-2424	*	
12-578299	529F6	23358 BASSETT ST	\$349,000	3+2	818-783-7721	*	
WEST HILLS							Lease
12-578409	529H6	6835 MAYNARD AVE	\$1,800	3+2	310-455-4363	*	
WINNETKA							Lease
12-578873	530D3	7959 SUNNYBRAE AVE	\$1,995	3+2	310-275-2827	*	
WOODLAND HILLS							Single Family
12-578875	560E3	5135 QUAKERTOWN AVE	\$1,399,000	4+3	310-826-8200	*	
12-578035	560D2	20481 COULSON ST	\$685,000	3+3	800-219-9169	*	
12-577675	559J4	22239 DE LA OSA ST	\$599,000	4+3	310-500-3900	*	
WOODLAND HILLS							Lease
12-578231	560A4	22021 BUENA VENTURA ST	\$2,850	4+3	310-724-7100	*	

NEW LISTINGS							OTHER AREAS
ALHAMBRA							Condo / Co-op
12-578099	596B5	598 S 2ND ST #D	\$275,000	2+2	818-632-8791	*	
AZUSA							Single Family
12-577695	568J7	342 N DALTON AVE	\$169,500	3+1	888-227-4120	*	
BELL GARDENS							Single Family
12-578227	675G3	2244 FITZGERALD AVE	\$109,000	1+1	310-887-6400	*	
BURBANK							Condo / Co-op
12-578265	563G1	240 W VERDUGO AVE #K	\$190,000	2+2	310-426-2776	*	
BURBANK							Lease
12-578733	563C4	324 N CLYBOURN AVE	\$2,200	2+2	818-783-7721	*	
CARSON							Residential Manufactured/Mobile Home
12-578105	764D1	17701 S AVALON BLVD #193	\$19,000	0+0	310-887-6400	*	
COMPTON							Single Family
12-578365	734H5	375 S GRAPE AVE	\$199,900	3+2	310-590-1235	*	
12-578731	735A3	920 E ELM ST	\$149,900	2+1	213-381-2862	*	
12-577717	734G2	1711 N SLATER AVE	\$118,900	2+2	310-301-3500	*	
COVINA							Single Family
12-578683	599B5	156 W REDWOOD CT	\$364,500	3+3	310-695-6160	*	
COVINA							Condo / Co-op
12-578119	599F2	20284 E ARROW HWY #C	\$149,900	4+3	323-255-9912	*	
CUDAHY							Single Family
12-578611	705D1	7521 OTIS AVE	\$162,800	1+1	310-590-1235	*	
DOWNEY							Single Family
12-578189	705H5	11865 HARO AVE	\$489,000	4+2	213-384-2129	*	
12-578871	735H1	8232 PRISCILLA ST	\$249,100	1+1	714-486-0609	*	
EAST LOS ANGELES							Income
12-578201	635A7	1112 ORME AVE	\$129,000		310-887-6400	*	
EL MONTE							Condo / Co-op
12-578481	597E6	11197 MCGIRK AVE	\$279,000	3+2	323-300-1000	*	
EL SEGUNDO							Income
12-578849	702D7	732 W IMPERIAL AVE	\$6,151,000		310-454-1111	*	
12-578851	702E7	216 W IMPERIAL AVE	\$3,926,000		310-454-1111	*	
12-578853	702E7	302 W IMPERIAL AVE	\$1,656,000		310-454-1111	*	
GARDENA							Single Family
12-578967	733G5	15209 DAPHNE AVE	\$244,900	2+1	310-481-7129	*	
GARDENA							Income
12-578281	733J4	1540 W 145TH ST	\$1,860,000		213-623-7800	*	
GLENDALE							Single Family
12-578901	534H7	1642 CAPISTRANO AVE	\$850,000	4+3	323-762-2600	*	
12-578557	565C1	3100 BUCKINGHAM RD	\$626,900	3+2	818-409-0040	*	
HAWTHORNE							Single Family
12-578385	733D1	12226 OXFORD AVE	\$349,000	3+2	310-970-4000	*	
12-578053	703F7	2917 W 116TH ST	\$339,999	5+4	866-494-0507	*	
HUNTINGTON PARK							Land
12-578605	675B7	7115 BENSON AVE	\$129,000	Land	310-777-6200	*	
LA CRESCENTA							Single Family
12-578665	504G6	2733 FRANCES AVE	\$999,000	5+4	818-995-2424	*	

* THEMLS PRO™ NEW LISTINGS							NEW LISTINGS DIRECTORY				IFC - INSIDE FRONT COVER, IBC - INSIDE BACK COVER, BC - BACK COVER													
LA PUENTE							<i>Single Family</i>		TORRANCE				<i>Condo / Co-op</i>											
12-577723	638B4	657 CLINTWOOD AVE	\$294,000	3+2	310-590-1235	*	12-578855	763C4	4322 SPENCER ST	\$650,000	3+3	213-637-1112	*											
12-578243	638H6	17117 GUMBINER DR	\$149,000	2+2	310-887-6400	*	12-578933	763E7	2300 MAPLE AVE #158	\$520,000	3+3	310-301-7400	*											
LAKESWOOD							<i>Single Family</i>		WATTS				<i>Single Family</i>											
12-578843	766D7	3469 SENASAC AVE	\$449,950	3+2	562-809-1331	*	12-578233	704H5	10813 LOU DILLON AVE	\$109,000	2+1	310-247-7770	*											
12-578647	766E6	4102 LADOGA AVE	\$399,900	4+2	877-647-3911	*	WHITTIER						<i>Single Family</i>											
LAWDALE							<i>Income</i>		12-578213				676J4		5734 JUAREZ AVE		\$214,900		2+1		562-663-3636		*	
12-577603	733D4	14600 FREEMAN AVE	\$399,900		310-216-9077	*	WHITTIER						<i>Condo / Co-op</i>											
12-578283	733D6	4011 W 160TH ST	\$353,900		310-671-4333	*	12-578359						677B5		12031 BEVERLY #2C		\$149,900		2+2		818-552-4300		*	
MAYWOOD							<i>Single Family</i>		WILMINGTON				<i>Income</i>											
12-578837	675C5	3911 E 53RD ST	\$254,400	3+2	714-486-0609	*	12-577619						794E4		1503 ISLAND AVE		\$175,000				310-469-0500		*	
MONTEBELLO							<i>Condo / Co-op</i>		OUT OF AREA				<i>Single Family</i>											
12-578813	636F5	1661 NEIL ARMSTRONG ST #203	\$174,900	3+2	310-271-2229	*	12-578835	000000	0 SIMMONETTA 14 ACRE ESTATE HACIENDA SAN JOAQUIN	\$4,900,000	6+9	310-305-8333	*											
12-578021	676E3	317 W LOHART AVE	\$152,500	3+2	818-536-7430	*	12-577683	921J4	5574 BASELINE AVE	\$2,295,000	4+3.5	805-688-5717	*											
12-577715	636F5	1620 NEIL ARMSTRONG ST #215	\$70,000	0+1	310-855-0100	*	12-578767	738C3	2160 WINTERWOOD DR	\$745,000	4+3	213-385-4989	*											
MONTEREY PARK							<i>Lease</i>		12-578891				763B6		4931 W CARSON ST		\$649,000		4+3		213-820-4188		*	
12-578903	635J4	1102 WANDERING DR	\$2,400	3+3	213-290-3363	*	12-577711	446-A	21978 JEFFERS LN	\$550,000	5+3	213-290-3169	*											
NORTH LONG BEACH							<i>Single Family</i>		12-578293				595C1		1316 HIGHGATE AVE		\$549,000		3+2		323-665-1700		*	
12-578139	765D1	6057 JAYMILLS AVE	\$149,000	2+1	310-887-6400	*	12-578935	756F5	1431 OLGA WAY	\$539,000	3+3.5	877-777-3071	*											
NORTH LONG BEACH							<i>Income</i>		12-577781				595C2		5705 HUB ST		\$469,500		3+2		323-316-9800		*	
12-578625	795F4	2225 LEWIS AVE	\$900,000		888-885-3334	*	12-578609	595C1	1002 MILWAUKEE AVE	\$449,000	3+1	310-461-0400	*											
NORWALK							<i>Single Family</i>		12-578845				742H7		2172 ADOBE AVE		\$399,000		3+2.5		562-556-0697		*	
12-578241	706F7	11823 FAIRFORD AVE	\$129,000	3+1	310-887-6400	*	12-578303	438-D	13418 DELAWARE RD	\$350,000	4+2.5	626-462-9869	*											
OXNARD							<i>Single Family</i>		12-578793				455-C		25838 ANDERSON LN		\$340,000		4+2		818-832-8380		*	
12-578413	522F4	674 W RODERICK AVE	\$259,000	2+1.5	818-466-6423	*	12-578827	446-F	14839 DAISY MEADOW ST	\$269,000	4+2	310-788-0700	*											
PARAMOUNT							<i>Income</i>		12-578547				456-H		10531 CANYON DR		\$220,000		3+2		818-782-3778		*	
12-577855	735H2	8116 HOWE ST	\$635,000		213-787-3797	*	12-578361	756F5	1451 E PADUA WAY	\$179,999	2+2	310-829-0629	*											
PASADENA							<i>Single Family</i>		12-578121				602A7		850 W E ST		\$169,900		3+1		909-266-1457		*	
12-578159	566D5	2115 E DEL MAR BLVD	\$169,000	2+1	310-887-6400	*	12-578939	595F4	5024 LATHROP ST	\$149,900	2+1	310-777-6200	*											
PASADENA							<i>Condo / Co-op</i>		12-577837				575F4		19340 ANACONDA ST		\$149,000		3+2		818-285-5626		*	
12-578763	565J5	355 S MADISON AVE #304	\$240,000	1+1	310-453-5368	*	12-577789	60667	456 S RANCHO AVE	\$145,000	4+2	818-285-5626	*											
PICO RIVERA							<i>Single Family</i>		12-578029				577A4		592 NILES ST		\$125,000		3+2		323-462-6262		*	
12-578023	676G7	7232 BENNINGTON AVE	\$235,000	3+2	310-666-6464	*	12-578497	602C7	401 E F ST	\$99,000	2+1	818-528-3200	*											
12-578247	706F2	8351 GREENVALE AVE	\$219,900	3+2	323-982-3000	*	12-577857	541-B	80856 AMHERST AVE	\$95,000	3+2	323-456-1920	*											
REDONDO BEACH							<i>Condo / Co-op</i>		12-578673				438-E		14466 VISTA DEL SOL LN		\$95,000		4+3		866-494-0507		*	
12-578787	763A5	222 S JUANITA AVE #A	\$740,000	3+3	877-647-3911	*	12-578621	419-H	38733 36TH ST	\$50,000	3+2	877-532-4521	*											
SAN PEDRO							<i>Income</i>		12-578145				447-G		20757 FORT TEJON RD		\$49,000		2+1		310-887-6400		*	
12-578705	634E4	860 W 5TH ST	\$13,895,000		310-877-8600	*	OUT OF AREA						<i>Condo / Co-op</i>											
SAN PEDRO							<i>Lease</i>		12-578435				119-B		11955 TIVOLI PARK ROW #8		\$550,000		3+2.5		310-428-7653		*	
12-577659	824B6	501 W 14TH ST #20	\$750	1+1	310-519-9600	*	12-577725	767D7	5471 VILLA WAY #33	\$324,500	0+0	714-486-0609	*											
SHADOW HILLS							<i>Single Family</i>		12-578239				464-C		24496 VALLE DEL ORO #205		\$110,000		2+2		213-637-1112		*	
12-578927	503A4	10930 WICKS ST	\$560,000	2+3	310-432-6400	*	12-578581	602E7	1235 E D ST #2	\$105,000	2+2	310-305-8333	*											
SOUTH GATE							<i>Single Family</i>		OUT OF AREA				<i>Income</i>											
12-577763	705F6	10407 KARMONT AVE	\$234,900	2+1	310-205-0050	*	12-578819						595G5		5376 POPLAR		\$365,700				714-486-0609		*	
SOUTH PASADENA							<i>Single Family</i>		12-578627				456B6		217 SESPE AVE		\$269,000				310-306-7653		*	
12-578161	595F4	4424 GUARDIA AVE	\$119,000	3+2	310-887-6400	*	12-578913	577C5	7040 ELMWOOD RD	\$137,000		424-247-1138	*											
SUN VALLEY							<i>Single Family</i>		12-577647				2442J2		315 GOODMAN ST		\$50,000				323-456-1920		*	
12-578857	533A3	7826 CLEON AVE	\$275,000	3+1	310-264-2225	*	OUT OF AREA						<i>Land</i>											
SUN VALLEY							<i>Condo / Co-op</i>		12-578151				4470F1		0 UNIMPROVED PARCEL 3086-018-021		\$10,000		<i>Land</i>		310-887-6400		*	
12-578765	533A1	8641 GLENOAKS #227	\$116,900	2+2	888-538-2688	*	12-578645	445-D	0 ROBERTS WALK	\$10,000	<i>Land</i>	310-301-3500	*											
TORRANCE							<i>Single Family</i>		OUT OF AREA				<i>Lease</i>											
12-578393	763D4	20533 MADISON ST	\$519,000	3+2	213-385-4989	*	12-578841						446-D		28013 ALTA VISTA AVE		\$2,800		3+3		213-531-0285		*	
12-577735	763F1	18029 ERMANITA AVE	\$449,900	4+2	888-227-4120	*	OUT OF AREA						<i>Residential Manufactured/Mobile Home</i>											
12-577937	733H6	2117 W 162ND ST	\$399,000	3+2	310-954-0808	*	12-577733						951A6		30802 COAST HWY #F12		\$153,000		2+2		818-933-3100		*	
12-578561	733F7	16707 FALDA AVE	\$370,000	3+2	310-970-4000	*																		

NEW LISTINGS DIRECTORY

OPEN HOUSES WESTSIDE / LOS ANGELES SATURDAY WESTSIDE / LOS ANGELES SUNDAY WESTSIDE / LOS ANGELES

SATURDAY WESTSIDE / LOS ANGELES
SATURDAY SAN FERNANDO VALLEY

LAKE BALBOA *Single Family*
7252 WHITE OAK AVE Open Sat 1-4 531B4
\$319,900 3+2 1sty-TRADITIONAL

GORGEOUS AND BEAUTIFULLY UPDATED HOME READY FOR MOVE IN. MANY FINE DETAIL FINISHES, NEW GRANITE KITCHEN, WALNUT WOOD FLOORS, FRESHLY PAINTED OPEN FLOOR PLAN, BONUS ROOM IN GARAGE WITH KITCHEN/BATH!

MLS#12-576011
 Justin Omid Monempour 310-876-2424 EPI INV REALTY

WOODLAND HILLS *Single Family*

5940 WINNETKA AVE Open Sat 1-4 560E1
\$1,285,000 5+5.5 CONTEMP MED



BEAUTIFUL 2 STORY HOME COMPETED IN 2005!
 Reduced \$100,000!! Open 2/4 from 1 to 4 pm. Spectacular Gated 2 Story home set high atop a hill with a long driveway. Four car Garage! High ceilings, crown moldings, French Doors and hardwood flrs. thru-out. Family rm w/fipc., vaulted & beamed ceiling. + Media/game rm. Huge kitchen w/center island, top-of-line stainless appliances, loads of cabinets, center island cook center. Master suite with fireplace and bonus rm with balcony. Landscaped yard, rock and waterfall, pool, spa, bbq

Blf-Ins,Dshw,Grbg Disp,Rng/Ovn,Other
 Karen Strauss 818-469-8430
 COLDWELL BANKER-S.O.

MLS#12-574263

SUNDAY WESTSIDE / LOS ANGELES

BEVERLY CENTER-MIRACLE MILE *Single Family*

7155 OAKWOOD AVE Open Sun 1-4 593D7
\$899,000 3+2 2sty-SPANISH

DYNAMIC SPANISH HOME w/2-STORY ENTRY. Old world charm & fabulous original details. Formal LR & DR, kitchen w/breakfast room, 2 BR/1 BA up and 1 BR/1 BA down. Gated private courtyard. 2- car garage.

MLS#12-573701 None
 N.Hartman/L. Brenner 323-860-4259 COLDWELL BANKER - HP

BEVERLY HILLS *Single Family*

1012 N BEVERLY DR Open Sun 1-5 592E6
\$6,495,000 5+6.5 FRENCH



BEVERLY HILLS GATED HOME ON A LARGE LAND NORTH OF SUNSET L
 This 2 story Gated French Provincial charm has 5 bedrooms, 6.5 updated baths, Living & Family rooms with Fireplaces and a Den, Dining Room connects to the Kitchen and kitchenette for easy entertainment. Master bedroom has his & hers bath with a connecting Dry Sauna! Separate Maid's quarters with bath and laundry room. Pool, Spa and Cabana with bath. This double gated house has circular drive way, 2 Car Garage & a car port. The property may have room for Tennis court....

Blf-Ins,Cbl,Cing Fan,Dshwshr,Dryer,Other
 Yar Meshkaly 310-777-6268
 COLDWELL BANKER-BH N

MLS#11-554469

272 S CANON DR Open Sun 1-4 632G2
\$1,299,000 3+2 SPANISH



PRIME BH LOCATION
 Located in a prime Beverly Hills area, this 1926 3 bd,2 ba CA Spanish hm has a large LR w/bareil ceiling & tons of light opening to a spacious FDR. Kit is light & bright w/an adjacent brkfst rm & pantry. 3 bedrooms w/hardwood flrs, 2 w/crown molding & 1 that opens to a walled patio area. Flrs incl detached 2-car garage w/separate storage rm. Hm needs work, but has many original Spanish Style details offer potential to create a beautiful hm or invest in one of Beverly Hills' most desirable areas.

www.premierlaproperties.com
 David Kramer 310-691-2400
 HILTON & HYLAND

BEVERLY HILLS POST OFFICE *Single Family*

1601 LINDACREST DR Open Sun 1-4 592F4
\$1,095,000 3+2.5 TRADITIONAL



TRAD 3+2.5 IN PRIME BHPO
 Remarkable oppntny to buy a fixer in the Crest St's & remodel to your own taste & style. Dble dr entry w/vaulted ceils, mstr ste + ba & access to patio w/pastoral ctn views. The 2nd level has an open flr plan w/frp/c, wet bar, pvd/rm & patio. Below is add'l level w/2 rms that can be used as bdrms or for entertaining. Other features incl a pl w/sep studio or pl hse & 2 car gar. Hse needs work, but there is great upside potential. On a 15k SF lot. Trust Sale.

www.premierlaproperties.com
 David Kramer 310-691-2400
 HILTON & HYLAND

MLS#11-561937

WESTSIDE / LOS ANGELES SUNDAY

1601 LINDACREST DR Open Sun 1-4 592F4
\$1,095,000 3+2.5 TRADITIONAL



GREAT POTENTIAL IN THE CREST ST SECTION OF BH
 Remarkable oppntny to buy a fixer in the Crest St's & remodel to your own taste & style. Dble dr entry w/vaulted ceils, mstr ste + ba & access to patio w/pastoral ctn views. The 2nd level has an open flr plan w/frp/c, wet bar, pvd/rm & patio. Below is add'l level w/2 rms that can be used as bdrms or for entertaining. Other features incl a pl w/sep studio or pl hse & 2 car gar. Hse needs work, but there is great upside potential. On a 15k SF lot. Trust Sale.

www.premierlaproperties.com
 David Kramer 310-691-2400
 HILTON & HYLAND

MLS#11-561937

9806 PORTOLA Open Sun 1-4 592C3
\$895,000 2+2 2sty-CRAFTSMAN

Craftsman beauty, remodeled in period style, charming, on two levels with separate entrances. Turnkey home, perfect for couple who wants style and privacy.

MLS#12-577843 Built-ins
 Rosanne Howard 310-786-1815 SOTHEY'S INT'L RLTY

BEVERLYWOOD VICINITY *Condo / Co-op*

1240 S CORNING ST #205 Open Sun 1-4 632J4
\$449,900 2+2 OTHER

JUST LISTED! Spacious 2-bd/2-bath condo close to places of worship,bakeries,dining,2nd floor SE.Carpets,walkthru kitchen,marble counters,gas cooking,micro.,frig. & dshwsher.Lndry inside. W/D incl.

MLS#12-576251 Dshwshr,Dryer,Grbg Disp,Micro,Rng/Ovn,Fr
 Michelle Sue Menna 3235594422 KELLER WILLIAMS RLTY

CULVER CITY *Single Family*

11806 MARSHALL ST Open Sun 1-4 672E5
\$799,000 895000 4+3.5 TRADITIONAL

DRASTIC PRICE CUT on this major remodel! Motivated Seller wants this in escrow soon. Ideal for home office, home business, entertaining, and those who need lots of privacy. Lots to say, come and see!

MLS#11-569889 Dshwshr,Micro,Rng/Ovn,Fridg
 Arleen Revilla RTR

CULVER CITY *Condo / Co-op*

5901 CANTERBURY DR #14 Open Sun 1-4 672J6
\$275,000 2+2 TRADITIONAL

GRT OPPORTUNITY! 2 BD, 2 BA CONDO. TOP FLR, CORNER, FRONT UNIT W/ TREE-TOP VIEW. SPIRAL STRCASE TO LOFT. GAS STOVE. 2 SIDE BY SIDE PKG SPACES. LG PATIO. SPAC MSTR. SHORT SALE SUBJ TO LENDER APPRVL

MLS#12-576087 Blf-Ins
 Willie Turner 310.642.7257 COLDWELL BANKER

5651 WINDSOR WAY #206 Open Sun 1-4 672J6
\$199,000 1+1.5 1sty-TRADITIONAL

Spacious, upgraded condo in gated complex. Lg 1 bdrm, 1.5 ba. Granite in kit & baths. Gated pkg. Controlled access bldg w/ pl, spa, sundeck, elev., on-site Indry. Ready to move-in NOT A SHORT SALE!

MLS#11-559647 Blf-Ins
 Willie Turner 310.642.7257 COLDWELL BANKER

HANCOCK PARK-WILSHIRE *Single Family*

447 S PLYMOUTH BLVD Open Sun 1-4 633G2
\$3,129,000 4+3.5 CONTEMPORARY



MID CENTURY MODERN COMPOUND
 A very rare offering in Windsor Square. Warm & inviting, architect's own mid-Century modern w/ clean lines & effortless indoor/outdoor flow. 4 beds+3.5 baths. Secure + private, this gated compound offers new, custom walnut floors throughout, 3 fireplaces + many special original details. Amazing outdoor spaces for entertaining w/ built-in . Attached 3-car garage + motor court w/additional parking, behind vanishing security door. This house has it all!

BBQ,Blf-Ins,Dshwshr,Dryer,Frzr,Other
 Jenna Cooper 323.481.0644
 TELES PROPERTIES, IN

928 S VICTORIA AVE Open Sun 1-4 633F3
\$1,473,000 +548000 4+2.5 2sty-CRAFTSMAN

STUNNING CRAFTSMAN LOVINGLY RESTORED. Extensive use of mahogany wood; bright & sunny LR, DR & stunning library. Gourmet kitchen w/ breakfast rm; terraced yard w/ pool. Garage converted to office.

MLS#11-563195 Dshwshr,Dryer,Grbg Disp,Micro,Rng/Ovn
 N.Hartman/L. Brenner 323-860-4259 COLDWELL BANKER - HP

SUNDAY
HOLLYWOOD HILLS EAST *Single Family*

6431 LA PUNTA DR Open Sun 1-4 593F2
\$1,895,000 3+2.5 ARCHITECTURAL

PIERRE KOENIG STEEL & GLASS DESIGN W/ ASTONISHING CITY VIEWS
 Pierre Koenig, F.A.I.A. Inspired by the purity of Koenig's steel & glass Case Study Houses & the anticipated Hollywood revival, Michael Gantert took a leap of faith building a new steel & glass house on a rare Hollywood Hills ridge site to survey the coming boom. This property stands with CSH #22 as his most dramatic work. While understated, the luxury of space is underscored with marble baths & a generous walk-in closet, a necessity nonexistent in Pierre Koenig's earlier Case Study projects.

Dshwshr,Grbg Disp,Rng/Ovn,Fridg
 Crosby Doe (310) 428-6755
CROSBY DOE ASSOCIATE

MLS#11-554079

MALIBU *Single Family*

21766 AZURELEE DR Refresh. Sun 1-4 629E4
\$3,495,000 4+4 ARCHITECTURAL

MESMERIZING OCEAN VIEWS FROM SANTA MONICA TO POINT DUME
 Walls of glass open to wrap-around decks with head-on views of Catalina Island and sweeping panoramic ocean views from Santa Monica to the Malibu Pier to Point Dume. Built in 2008 by renowned architect Steve Kent, this modern architectural masterpiece boasts the finest materials and high-tech systems with incredible attention to every last detail. 4800 square foot, 4 bedroom, 4 bath, office, media room, plus separate guest suite. - Directions: PCH to Rambla Pacifico, Right on Azurlee to Address

FIOS,Miele,Toto,Sub-Zero,W/D,Guest Suite
 Brian Goldberg 310-403-4623
COLDWELL BANKER-MALI

MLS#11-569371

MARINA DEL REY *Single Family*

125 REEF MALL Open Sun 1-4 701J1
\$2,199,000 4+6 CONTEMPORARY

Ultimate Contemporary Silver Strand home. Two-story entry, soaring ceilings, plus elevator. Wonderful wall space perfect for displaying artwork. Tile flooring and custom carpeting.

MLS#11-549339 **Dshwshr,Elvtr,Grbg Disp,Rng/Ovn,Fridg**
 Aaron Kirman **HILTON & HYLAND**

PACIFIC PALISADES *Single Family*

911 HARTZELL ST Lunch Sun 1-4 631B5
\$2,395,000 4+4 TRADITIONAL

Totally remodeled 4BD/4BA Alphabet Street Contemporary Trad w/ high-end appliances + finishes. Gourmet Kit/Fam Rm; all new sound sys, HVAC, roof, solar panels, etc. Incredible style and quality!

MLS#12-577577
 Katy Kreidler 310 230 3708 **PRUDENTIAL CA - PALI**

1000 MONUMENT ST Open Sun 1-4 631A5
\$1,649,000 3+2.5 TRADITIONAL

COMPLETELY REMODELED ALPHABET STREET HOME
 Come see this gorgeous 3 bed + small office, 2 1/2 bath all redone alphabet street home. Fantastic location, right across from restaurants + shops, all that Pacific Palisades has to offer. The 1,869 sf home features a newer kitchen w/ ss appliances, hrdwd flrs plus brand new baths w/ gorgeous Limestone. Glass doors open to a large + spacious yard, on this rare 7,536 sf private corner lot. Brand new roof and electrical, plumbing, furnace and water heater. Also for lease at \$6,500/mo.

Dshwshr,Dryer,Frzr,Grbg Disp,Hood Fan
 Anthony Marguleas 310-293-9280
AMALFI ESTATES

MLS#12-578147

1300 MONUMENT ST Open Sun 1-4 631A4
\$1,560,000 3+2 ARCHITECTURAL

CLASSIC POST & BEAM DESIGN IN PACIFIC PALISADES
 Pollack & Kahn, Engineers Classic Post and Beam Design, 1955. From the body of work discovered, it is clear that Pollack & Kahn mastered the now classic post & beam glass house style pioneered by the U.S.C. School of Architecture. Living spaces are lifted, & set above the carport to allow maximum light & views from the hillside setting. A prominent roof beam projects through the living room out beyond the glass wall, focusing one's view out to the treetop vistas, & glimmer of the ocean.

Dshwshr,Grbg Disp,Rng/Ovn,Fridg
 Crosby Doe (310) 428-6755
CROSBY DOE ASSOCIATE

MLS#12-578801

SUNDAY
PARK HILLS HEIGHTS *Condo / Co-op*

6616 SPRINGPARK AVE #8 Open Sun 12-4 673A7
\$365,000 3+2 MODERN

FHA/VA APPROVED LOANS! Low 0%-3.5% Down & 3% DP ASSISTANCE to Buyers that make less than 85k/year..SS Appls,Granite Cntrs,Bamboo/Tile flrs,Int.Custom Painted,Wash/Dryer Hookups,On-site extra storage.

MLS#11-562695 **Dshwshr,Grbg Disp,Hood Fan,Micro,Rng/Ovn**
 Lee Johnson 310-892-2244 **KELLER WILLIAMS-SM**

SUNSET STRIP - HOLLYWOOD HILLS WEST *Single Family*

7141 WOODROW WILSON DR Open Sun 1-4 593C1
\$1,395,000 3+3.5 CONTEMPORARY

This gorgeous Contemporary Home in Hollywood Hills is done This 3 bedroom 3.5 bath home has high end finishes. Hardwood floors throughout. Sliding doors leading out to balconies with an amazing view.

MLS#12-573981 **Blt-Ins,Dshwshr,Dryer,Frzr,Grbg Disp**
 Melissa Zee 310.309.0099 **RODEO REALTY INC.**

WEST L.A. *Single Family*

2447 STONER AVE Open Sun 1-4 632A7
\$575,000 3+1 CALIFORNIA BUNGALOW

Now is your chance to enjoy a warm and inviting Traditional home on the West side. Original condition with beautiful hardwood floors, a wood burning fireplace,copper plumbing and upgraded electrical. Big backyard and large detached garage that would make a wonderful studio or office.The rest is waiting for your touches. Seller is very motivated. Submit offers.

Cing Fan,Dryer,Rng/Ovn,Fridg,Wshr
 Colleen McLean **KELLER WILLIAMS RLY**

MLS#12-573889

WESTWOOD - CENTURY CITY *Condo / Co-op*

1870 VETERAN AVE #314 Open Sun 1-4 632B5
\$788,000 3+3.5 CONTEMPORARY

Sunny 2,514 sq.ft. 3+3.5 penthouse. Huge living space w/two-story windows, shutters, fireplace. Master suite w/2 walk-in closets. S/S parking in gated gar. Elevator bldg w/pool, spa, gym, & more!

MLS#12-574469 **Sundeck with panoramic city views.**
 Sue Miller (310) 821-5090 **COLDWELL BANKER-MDR**

1333 S BEVERLY GLEN #803 Open Sun 1-4 632D2
\$549,000 2+2 CONTEMPORARY

GREAT 2 BEDROOM CONDO IN WESTWOOD
 Spacious two bedroom (den could be converted to one bedroom) with 2 complete bathrooms. Very expansive living room with fireplace and stunning city views. Large dining room with wet bar. Tons of closet & cabinet space, inside laundry room with sink. Master has huge walk-in closet and very chic and modern bath. Full-service building with 24 hour valet and concierge/on site manager, plus pool, gym and recreation room. Very impressive lobby. Easy to show!

Dshwshr
 Mojgan Hakim 310-387-8500
COLDWELL BANKER-BH N

MLS#11-548499

SUNDAY **SAN FERNANDO VALLEY**

ENCINO *Single Family*

3810 DIAMANTE PL Open Sun 2-5 561E6
\$1,000,000 5+4.5 2sty-MEDITERRANEAN

This Sophisticated Mediterranean Gem Sits in the Hills of Encino located in Lanai School District. The home is situated on over half an acre cul-de-sac. Hardwood floors throughout!

MLS#11-549791 **Blt-Ins,Cbl,Cing Fan,Dshwshr,Dryer,Other**
 Melissa Zee 213.422.7941 **RODEO REALTY INC.**

WEST HILLS *Single Family*

6546 SHOUP AVE Refresh. Sun 11-4 529J6
\$619,000 4+3.5 CONTEMPORARY

Beautiful gated and remodeled custom home on half an acre lot! Huge set back from the street. Room to expand and for a pool. New custom kitchen, floors, and paint throughout the whole house.

MLS#12-575309 **Dshwshr,Frzr,Micro,Rng/Ovn,Fridg**
 Michael Shlomof 310-728-9969 **COLDWELL BANKER-SUNS**

OPEN HOUSES

WESTSIDE / LOS ANGELES SUNDAY

WESTSIDE / LOS ANGELES

BY APPOINTMENT WESTSIDE / LOS ANGELES

HOLLYWOOD HILLS EAST *Single Family*

6313 BRYN MAWR DR By Appt. 593F2
\$1,595,000 4+4 2sty-SPANISH

Classic Old Hollywood 4 bed Spanish totally restored. Private bkyrd w/ lrg pool, spa & 2 lrg decks. Hrdwd flrs, Soaring ceilings, 2 patios w/ views, 2-car garage, security system, home stereo system.

MLS#12-578437 BBQ,Dshwshr,Grbg Disp,Hood Fan,Intrcm
 Lifta Glinert 213-595-2455 KELLER WILLIAMS RLTY

2329 HOLLY DR By Appt. 593E2
\$699,000 3+4 3sty-CONTEMP MED



BEAUTIFULLY UPDATED HOME - JUST BRING YOUR TOOTHBRUSH!

Turnkey home at incredible price. Beautifully updated contemp Med. 3-story,hillside home. 2-story entry draws you into this freshly updated home. Hardwd flrs,high ceilings,focal fireplace highlight step-down L.R. Warm kitchen: Wolf stove/oven,stone countertops, large pantry. Massive master suite secluded on its own flr w/vaulted ceilings,serene sitting rm w/fireplace, zen-like master ba w/luxury appointments incl.double sinks,shower,spa tub,private patio/deck. 3 BD, 3 1/2 BA home ready for move-in

1st open house Tue. Feb. 7th 11 am -2 pm
 Teresa Gerger 323-466-3875

MLS#12-578951

KELLER WILLIAMS LARC

SUNSET STRIP - HOLLYWOOD HILLS WEST *Condo / Co-op*

9255 DOHENY RD #906 By Appt. 592G6
\$2,995,000 1+1.5 MODERN

Redefining ultra modern living in the prestigious Sierra Towers. Seamless walls of custom white oak perfection and polished imported limestone put this home in a class of its own.

MLS#11-555249 Bff-Ins,Cbl,Dshwshr,Dryer,Elvtr,Other
 Dustin Nicholas 310-770-1847 NICHOLAS PROPERTY GR

WEST HOLLYWOOD VICINITY *Condo / Co-op*

834 WESTMOUNT DR #A By Appt. 592J6
\$939,000 969000 3+2 2sty-CONTEMPORARY

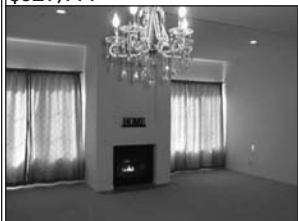
Gorgeous 2 story TH in prime location Clean & contemporary unit incl. xtra lrg living room windows and hi ceilings making it very lite, brite & roomy. Completely remodeled w/ best of materials.

MLS#11-566641 Dshwshr,W/D,Frzr,Grbg Disp,Hd Fan,Other
 Kathie Arastoo 310-281-3972 COLDWELL BANKER-BH S

NEW LISTINGS WESTSIDE / LOS ANGELES

BRENTWOOD *Condo / Co-op*

11920 GOSHEN AVE #202 631H5
\$529,999 2+2.5 CONTEMPORARY



Ready to move in to your dream home! Bright, clean and very attractive 2 bedroom 2&1/2 bath condo situated right in the heart of Brentwood. Walking distance to shops and restaurants. Spacious master suits with fireplace and master bath with jet bath tub, walk-in shower, and closet. High Ceilings with open, large kitchen. Washer and dryer conveniently located inside the unit.

Dshwshr,Dryer,Elvtr,Grbg Disp,Hood Fan,Other
 Julia K. Goodman 310-801-8448
 COLDWELL BANKER-MARINA DEL REY

MLS#12-577113

SUNSET STRIP - HOLLYWOOD HILLS WEST *Lease*

8326 KIRKWOOD DR
\$3,450 3+3



Fully remodeled, new painted, new fixtures, 3 bedrooms, 2 story, 2 car garage w/ storage shelves, wood floors, large master, California sun room, deck, patio, central HVAC air conditioning, dishwasher, garbage disposal, cable ready, refrigerator, oven/ stove, washer and dryer. Close to Laurel Canyon Mart, close to Trader Joe's

AC/ Heater, Wash/ Dryer, Dishwasher, garbage disp

Brandon Douglas 310.801.1333
 COLDWELL BANKER SUNSET STRIP

WESTSIDE / LOS ANGELES



Looking for Property in Southern California?

Go to THE SOURCE...

THEMLS.com™

THE SOURCE FOR REAL ESTATE™

...Where Other Real Estate Websites get THEIR Information!

Visit TheMLS.com

BY APPOINTMENT

WESTSIDE / LOS ANGELES

NEW LISTINGS

WESTSIDE / LOS ANGELES

Why Advertise? High Traffic Distribution Locations.

Throughout the Los Angeles Metropolitan Area! Find us in Coffee Houses, Supermarkets, Restaurants, Hospitals, Hotels, Retail Shops, Farmers' Markets, and More...

Try it... Scan now to see properties nearest you!

SCAN ME



FOR INSTANT PRICE, PICS & INFO

TEXT: **MLS1001** TO THE #: **85377**

Powered By Mobile Real Estate ID™

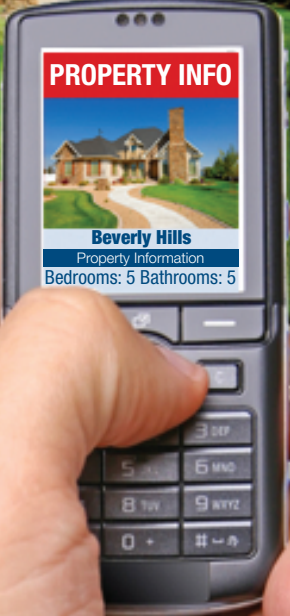
Standard text messaging rates apply



SCAN OR TEXT
To Get **DETAILED**
Property Information & Pictures



FOR SALE
FOR INSTANT PRICE, PICS & INFO
TEXT: **MLS1001** TO THE #: **85377**
Powered By Mobile Real Estate ID™



A Free Service
Now Available
To Members of The MLS & Their Clients



LATITUDE 33[®]

SKY + BOARDWALK + BEACH



NEW YEAR | NEW PRICE

BOARDWALK 114 NOW \$785,000. TOUR THIS HOME TODAY!

OVER 80% OF THE UNITS SOLD!
HURRY - ONLY A FEW HOMES REMAIN.
SALES OFFICE OPEN DAILY, 10AM - 5PM



the
VALERIE FITZGERALD
group.com 310.285.7515

330 WASHINGTON BLVD, marina del rey, ca 90292
T: 310.881.6600 WWW.LATITUDE33LA.COM

Broker Cooperation Warning: This is not an offer to sell but is intended for information purposes only. Many factors and agencies are involved in a real estate transaction. We are not a financial institution and cannot provide any financial advice. Please consult with your attorney, accountant, and other professionals before making any decisions. All offerings are subject to the terms, conditions, and restrictions of the prospectus. Although we are a real estate company, we are not a bank and do not provide any financial services. Please contact your lender for more information. This advertisement is not intended to be used in any other jurisdiction. © 2015 Latitude 33. All rights reserved. Broker to accompany and register under the Real Estate Law of the State of California, CA License # 01234567.

FEATURED LISTINGS

FOR MORE LISTINGS VISIT US AT THEMLS.COM

WESTWOOD - CENTURY CITY

2249 OVERLAND AVE

\$989,000

BY APPT



MLS#12-575711

3+3

SPANISH

NEW: FULLY RENOVATED SPANISH WITH STUDIO / GH + GARAGE
TELES PROPERTIES ERNIE CARSWELL 310.345.7500

SANTA MONICA

2260 27TH ST

\$1,549,000

OPEN SUN 1-4



MLS#12-574457

4+3

2sty-TRADITIONAL

GORGEOUS SUNSET PARK HOME WITH ENVIABLE YARD!
KELLER WILLIAMS RLTY NANCY HOCHMAN 3106008358

SUNSET STRIP - HOLLYWOOD HILLS WEST

9255 DOHENY RD #906

\$2,995,000

BY APPT



MLS#11-555249

1+1.5

MODERN

"SIERRA TOWERS" - ULTRA LUXURY - IN A CLASS OF IT'S OWN
NICHOLAS PROPERTY GR DUSTIN NICHOLAS 310-770-1847

WEST LA.

2049 BUTLER AVE

\$759,000

BY APPT



MLS#11-526535

DUPLEX IN HIGHLY SOUGHT AFTER LOCATION - SELLER CAN CARRY
NICHOLAS PROPERTY GR DUSTIN NICHOLAS 310-770-1847

SHERMAN OAKS

14940 OTSEGO ST

\$799,000

OPEN SUN 1-4



MLS#12-577053

4+3

CALIFORNIA BUNGALOW

ENTERTAINER'S RENOVATED CALIFORNIA BUNGALOW W POOL & SPA!!
SOTHEBY'S INT'L RLTY PENELOPE P. ALEXITCH 310-733-7121

HOLLYWOOD

1645 VINE ST #411

\$739,000

BY APPT



MLS#12-574575

2+2

CONTEMPORARY

RARE 2+2 W/2 PARKING+HUGE BALCONY, WEST VIEWS@THE BROADWAY!
SOTHEBY'S INT'L RLTY JEFFREY HOBGOOD 310-305-7653

BRENTWOOD

11920 GOSHEN AVE #202

\$529,999

REFRESH. SUN 1-5



MLS#12-577113

2+2.5

3sty-CONTEMPORARY

READY TO MOVE INTO THIS BEAUTIFUL, BRIGHT AND CLEAN CONDO.
COLDWELL BANKER-MARI JULIA K. GOODMAN 310-801-8448

BEVERLY CENTER-MIRACLE MILE

6258 WARNER DR

\$1,249,500

OPEN SAT 1-4



MLS#12-577793

4+3

MEDITERRANEAN

CLASSIC MEDITERRANEAN FAMILY HOME IN COVETED CARTHAY CIRCLE!
GILLERAN GRIFFIN CO DAVID ISRAELI 310-918-3527



NEW YEAR LIMITED TIME OPPORTUNITY

Developer will pay the equivalent of one year of HOA fees for all escrows opened before February 29, 2012*

# 1003	1 Bed/1 Bath	600 SF	E Facing	\$293,000
# 601	1 Bed/1 Bath	740 SF	NE Corner	\$319,000
# 1501	1 Bed/1 Bath	678 SF	NE Corner	\$343,000
# 902	2 Bed/2 Bath	1,001 SF	E Facing	\$469,000
# 1405	2 Bed/2 Bath	1,232 SF	SW Corner	\$620,000

- Luxuriously-designed condominiums in a contemporary boutique building featuring a steel and emerald glass façade
- First class amenities & views with floor-to-ceiling windows
- Rooftop deck, fitness center & parking, 24-hour lobby attendant
- Prime downtown location (Hope & 7th)
- Located across the street from Macy's Plaza & Sheraton Hotel

The 655 Hope Sales Gallery
655 S Hope Street #1605
Los Angeles CA 90017
☎ (213) 892-0240
www.655hope.com

3% BROKER CO-OP**
51% OCCUPIED OR IN ESCROW



©2012 – The SECK Group. All square footages are approximate.
Pricing effective date of publication and subject to change without notice.
*In order for incentive to be paid: 1) Buyer must close escrow within 45 days of escrow opening, and 2) Chosen lender, if any, must approve of incentive.
**Broker must accompany buyer on their first visit.

